

Newspaper Uses Limerick To Announce Ship Arrival

Charleston, S. C. (AP)—A British freighter arriving here inspired this verse in the Charleston News & Courier:

"There is a small ship from Great Britain
"At Columbus Street she is sittin'
"Her name, if you cared,
"And please be prepared,
"Is the Limerick, and so this is written."

The House of the Week

Open Heart of Your House to Sun

By DAVID G. BAREUTHER

You can open the heart of your house to the sunshine and the stars when you build around an indoor patio as shown in this smartly economical design, T-601 for The House of The Week.

The central patio of this house provides complete privacy for sunbathing, barbecue picnics and care-free relaxation. It makes this an ideal home for the city dweller, whose need for privacy is greater than the suburbanite's and whose building site may be more limited in size.

Yet this house could be adapted easily to a scenic rural site merely by relocating the carport to open that side of the patio toward the view. In the present arrangement the outer brick wall of the carport effectively screens the patio. When the car is out, the carport becomes a covered porch separated from the



Contemporary styling uses the smart brick wall in the front of this house to afford maximum privacy.

open-roof patio by a low masonry planting box.

Sliding glass walls open onto the patio from living room and from master bedroom. There is a fireplace on the patio and another in the living room.

High studio ceilings are provided in the living room, front entrance hall and dining room by extending these room heights up to the rafters. Added privacy from street views is obtained by devoting virtually the entire shallow gable end in front to high windows. These windows start above your head at about 8 feet from the floor and extend to the roof line.

Peterson & Ebbert, Detroit architects and engineers, have given this house a smart facade. The high brick wall in front is capped with ledge stone and is extended out beyond the dining room on the left where it serves as a high planting box. The front door is flanked by a floor-to-ceiling window. The few places under the roof not occupied by high windows are filled in with striated plywood.

Room arrangement is especially convenient in this house. The entry hall offers access to all parts of the house and makes every room a dead end room thus eliminating annoyances of passage through rooms.

The three bedrooms are secluded in the rear, where standard size windows are set in an outer wall of striated plywood above a brick veneer base.

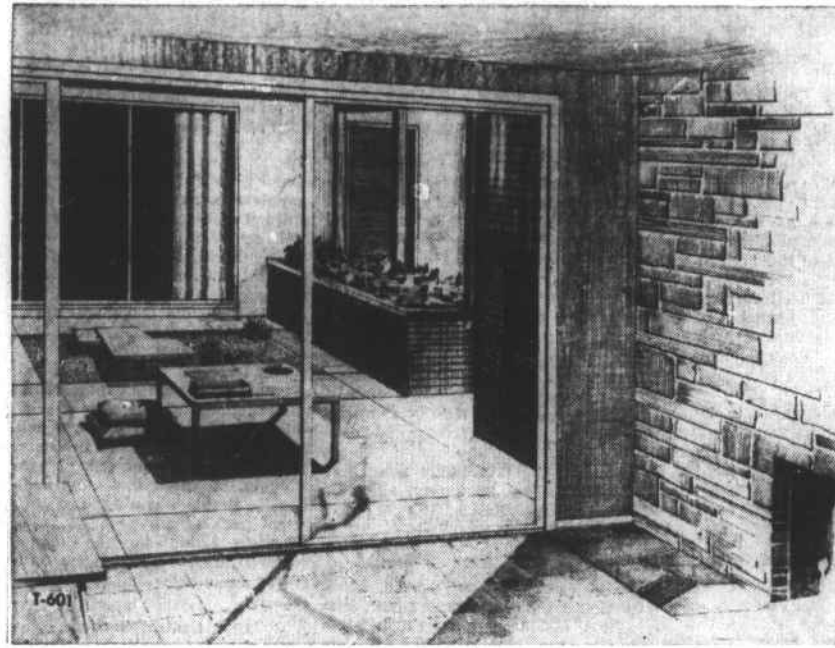
A large hobby and storage room is located back of the carport. A back door in this room opens to the rear garden. A lavatory opens both from the hobby room and from the master bedroom. Containing a shower stall, this lavatory is handy for cleaning up after gardening or a day at the beach. It also provides a small private bathroom for the master bedroom.

A guest wrap closet in the hall near the front entrance is surrounded by an indoor planting box under the ridge of the roof. On the living room side of this closet is a built-in for books with four sliding glass doors on its upper portion and flush wood doors on the cabinets below.

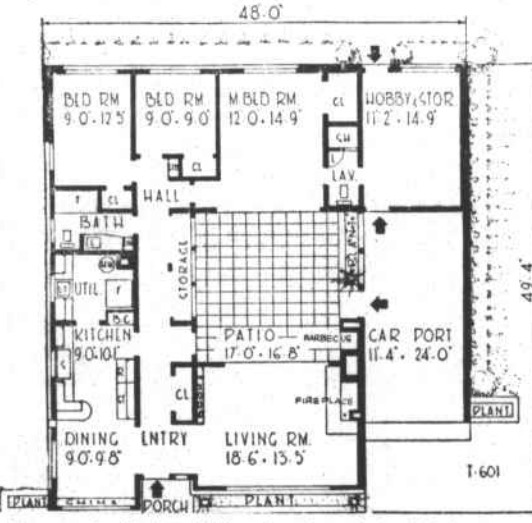
A storage wall, separating the hall from the patio, is lighted by a row of high windows above a large panel of striated plywood which forms the inner wall of the patio.

The kitchen is handy to the front door as well as to the carport across the patio. Laundry facilities are located in the utility room adjoining the kitchen. The utility room has a sliding door.

Economical but sound construc-



View from living room, looking across patio toward master bedroom's glass wall.



tion is specified for this house. No basement is required. The architects suggest construction on a concrete slab with 12-inch poured concrete foundation walls. Lath and plaster is recommended for all interior walls, although suitable dry wall construction would be acceptable. Ceramic tile and acid resisting fixtures are among specifications for both bathrooms. The exterior of brick veneer is laid up on building felt and insulat-

ing sheathing for weatherproofing. Three coats of paint are called for on all exposed wood surfaces outside with two coats for interior decoration. Inner walls should be sealed before wallpapering. Clear lacquer is used on the striated plywood. Patio pavement is pitched and drained for rainy weather. This floor can be varicolored flagstones laid in concrete, red quarry tile or plain concrete to match the carport.

Facts to Know

Statistics to help in obtaining rough building estimates for Design T-601 include the following:

The house covers 1,587 square feet exclusive of patio and carport. The patio comprises approximately 284 square feet and the carport adds 288 square feet. The house contains 15,611 cubic feet.

Points to Watch in Buying Land

Location and setting are vital assets to a home. A site too near to city centers may prove too expensive, too crowded. Remote rural locations have their drawbacks, as well.

You'll want water and utility lines, fire and police protection, neighbors and friends in emergencies, convenient schools, churches, stores.

A happy compromise is called for.

And shade trees are valuable for a setting. It takes years to grow good sized trees. Persuade your builder to spare as many trees as possible.

Wide houses need wide lots. Check your local zoning authorities to determine the distance you must keep between your house and the side boundaries of your site.

Send This Coupon for Your STUDY PLAN

You can get a study plan for The House of The Week by filling in your name and address on the coupon on this page and sending it with 35 cents to this newspaper.

This study plan shows each floor of the house together with each of the four elevations, front, rear and sides of the house. It is scaled at 1/4-inch per foot. It includes a guide on "How to Get Your House Built."

You can take this study plan to your bank or other mortgage lender and to your builder and get rough estimates on the cost of construction in this area, as well as an idea of the relation of the cost to your budget.

With this information you will know whether you will want to proceed with construction by ordering working blueprints direct from the architect and asking for bids for the work.

THE NEWS-TIMES

Enclosed is 35 cents. Please send me a copy of the study plan

for The House of the Week, Design T-601

NAME \_\_\_\_\_

(Please Print)

STREET \_\_\_\_\_

CITY \_\_\_\_\_

STATE \_\_\_\_\_

Do's and Don'ts of Home Repair

By ANDREW C. LANG NAILS

DO...remember that, while some fastening methods have decided advantages over nailing, none of them surpasses it in handling ease and economy.

DO...get maximum strength, when nailing two pieces of wood together, by having more of the nail in the second or under piece of wood.

DO...use common nails for general construction work, box nails for light construction, finishing nails and brads when they are to be driven below the surface, casing nails for interior trim and cut nails for tough, heavy-duty jobs.

DO...select other types of nails for special purposes, remember-

ing that there are nails specifically made for use in floors, gypsum board, hardboard, wood shingles, asphalt roofing and practically anything else in the building line.

DO...keep your eyes focused on the nail when hammering, using several blows of moderate force rather than a couple of blows of heavy force.

DON'T...forget that, when using wood inclined to split easily, blunt the nail points slightly with a hammer and drill pilot holes about half the thickness of the nails.

DON'T...try to straighten out a nail that bends while being driven into softwood; remove it and use a new nail.

DON'T...necessarily remove a nail that bends while being driven into hardwood; it may be easier to straighten with a pliers and continue hammering carefully.

DON'T...overlook the possibility, when working in confined quarters, of starting a nail in a piece of wood by striking it with the flat part of the hammer head rather than the face.

Kansas Drought Proves Bane to Wild Coyotes

Manhattan, Kan. (AP)—Kansas' protracted drought is proving a bane not only for the wheat state's farmers, but also for the farmers' foes, the coyotes.

H. T. Gier, Kansas State College zoologist, reports the state's coyote population has dropped from 70,000 to less than 40,000 in the past five years. Gier says dry summers have reduced cover, thereby making coyotes more vulnerable to hunters.

B.P.S. Paint - Painter's Supplies Building Hardware - Stanley Tools Door Frames - Window Frames And All Kind of Millwork - Mouldings - LOCKHART MILLWORK CO. Highway 70 West • Morehead City Phone 6-3918

YOUR DREAM HOME will be enhanced by Stockwell's American Panorama Wall Paper and Hand-Printed Fabrics to Match... Or for the Do-It-Yourself family, use the Birge quick pretrimmed, prepacked papers. You will find a complete selection at

B & M Builders Supply Bonner St. Phone 6-4603 Morehead City

IT'S AMAZING! The Newest - The Finest Satin Flat Alkyd Enamels



For Interior Finishing. You Get a Complete Finish Job With One Coat on Most Surfaces.

Hardware & Building Supply Co. 727 Arendell St. Phone 6-3247 Morehead City

Beautiful Your Home With Wrought Iron

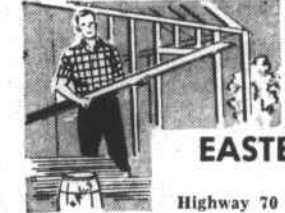


Made-to-Measure WROUGHT IRON RAILINGS & COLUMNS Plain and fancy designs. All materials used are solid iron with rust resistant finish.

MICRO MACHINE COMPANY Phone 6-4919 Located 6 Miles West of Morehead City Highway 24

ALL TYPES OF LUMBER

NATIVE AND WESTERN PINE MOULDINGS



EASTERN MILLWORKS PHONE 2-9641 Highway 70 and 101 Beaufort, N. C.

R & N FURNITURE CO.

Furniture -- Electrical Appliances -- Radios Vinyl -- Plastic -- Inlaid Linoleum Cork -- Rubber -- Asphalt Tile RUGS Wall to Wall Carpeting Venetian Blinds 1211 BRIDGES ST. PHONE 6-3419 MOREHEAD CITY.

We Make Anything You Need in Sheet Metal

Gutter - Downspout - Heating

No Job Too Large Nor Too Small

- FREE ESTIMATES -



Byrd's Metal Works 103 N. 28th St. Morehead City Phone 6-3328

COMPLETE BUILDING MATERIALS, SUPPLIES, AND PAINT

Huntley's

Atlantic Highway Phone 2-4871 Beaufort

Gate City AWNING WINDOWS

The horizontal sash open wide for 100% ventilation - the entire window serves as a ventilator.

The BEST in stock or custom made millwork. Have us quote you a price on all the millwork on your home. Windows (wood or metal) doors, cabinets, jalousies, builders hardware.

Special prices for house orders. Free Estimates.

MITCHELL'S CARPENTER SHOP Highway 70 West Phone 6-3956 Morehead City

A PERFECT PLACE FOR LEISURE LIVING

MITCHELL VILLAGE

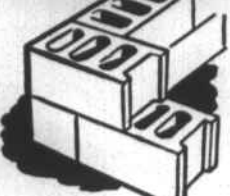
Phone 6-4394

MRS. GEORGE McNEILL

Associate

ROCHELLE REALTY CO.

See Us For Concrete Blocks



- SAND GRAVEL CEMENT MORTAR CEMENT WATERPROOFING-PAINT Concrete Steps Septic Tank Lids Cement Drain Tile Ornamental Products

Morehead Block & Tile Co., Inc. Highway 70 West Phone 6-3970

Do You Need An Extra



CHECK THESE POINTS

- Do "baths for all" mean long delays? Is morning traffic always a problem? Want to add a bath at low cost? Check.

Beaufort Plumbing & Supply Co. Phone 2-4696 306 Live Oak St Beaufort

HEAT AND COOL Without Fuel -- With One Unit Typhoon Air Conditioning

Up to 10 Tons New Air Cooled Units - Easy to Install - No Plumbing For Information See COMPLETE REFRIGERATION CO. 202 N. 28th St. Phone 6-3304 Morehead City

BE SURE OF YOUR TRANSACTION KNOW YOUR CUSTOMER!

Join, and Make Use of County Credit Bureau 1213 Bridges St. Phone 6-4380 Morehead City

Mansfield Builders Supply

Phone 6-3971 Highway 70 West • Morehead City Contractors of Beautiful Homes

If You're Planning to Build or Remodel SEE US FIRST SAFRIT LUMBER CO. Lennoxville Road Beaufort Phone 2-4581

GOODWIN CONSTRUCTION CO. Inc. GENERAL CONSTRUCTION CONTRACTORS 105 North 10th St. • Morehead City All Types of Homes, Commercial Buildings, Remodeling, and Repairs. We have the service of a registered architect and a professional decorator available. For Information Call 6-3078