

Sliding Doors Defy Wind

Sliding glass doors are one of the most memorable and successful of modern building accessories. Their sturdy aluminum frames lock as securely as modern office building and store doors.

Weatherstripped as thoroughly as any window or door, they defy the worst of storms.

Glazed with single sheets of heavy plate glass, or with double insulating glass, they can be as comfortable in any climate as picture windows or window walls.

Standard height is 6 feet 10 inches, with widths of openings ranging from 6 to 16 feet.

Five pairs of sliding glass doors are used in the plan for HW-23 on this page.

The House of the Week

Here's Plan for Indoor-Outdoor Living

By DAVID G. BAREUTHER

An ideal plan for indoor-outdoor living is featured in Design HW-23 for The House of the Week.

Garden terraces surround this house. Broad sliding glass doors open five rooms to breezes and sunshine.

Kitchen and family room merge into a spacious informal living area, with a barbecue fireplace in the kitchen. This arrangement spares the big living room and formal dining room from everyday wear and tear.

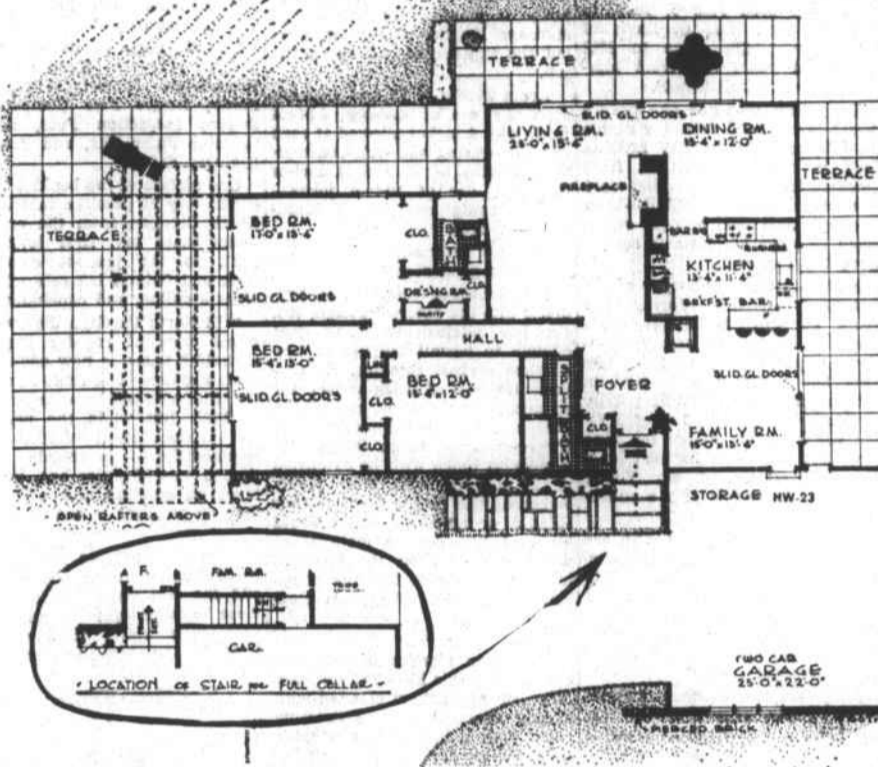
A gracious entrance foyer, three bedrooms, two bathrooms—one a split bath—complete this unusual layout.

All this and low costs, too, are made possible by expert planning, which keeps this house within 1,440 square feet and saves \$1,500 or more by substituting a crawl space for a basement.

See HOUSE PLAN, Pg. 4, Sec. 2



Open rafters over terrace and sliding glass doors add distinctive note to this smart ranch house.



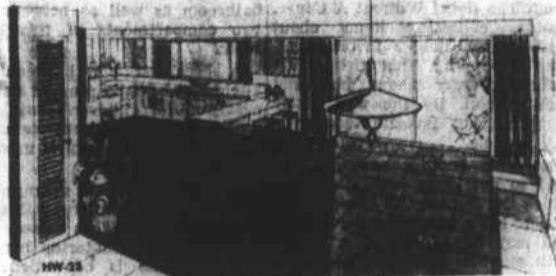
How sliding glass doors open on garden terraces from five rooms.

City of Reading Rejects Offer of Japanese Fish

Reading, Pa. (AP)—A Japanese manufacturer offered the city of Reading a fish for its Mt. Penn pagoda but Councilman Harold E. Guldin thought it wise to reject the offer.

"It may create quite a few problems," he declared. The fish, a tile ornament, weighed two tons.

About one American in six plays some kind of musical instrument.



Family room and kitchen with breakfast bar between.

Home Demonstration News

Cold Weather Brings Hog Killing, Meat-Preserving

By FLOY G. GARNER, Home Agent

Hog killing time is just around the corner! When the weather begins to get colder and harvest is about over most farm families begin to think about killing hogs. There are many problems that confront them, too, and among these is storage of the family meat supply. This is a very important factor and deserves a lot of planning. Most families have home freezers or rent locker space at a locker plant. A few may prefer to can part of the meat supply. Some folks make the mistake of overloading a home freezer with fresh meats.

The home freezer is a storage box and not a quick freeze. If you have a home freezer, do not load it with fresh meats—have it quick frozen at your local freezing plant.

Storage of cured meats is very important. Cured meats need air circulation to age properly and

should be bagged by the first of March to prevent any insect damage. The smokehouse is a good place for storage. Cement, cinder block buildings or basements are poor storage places because of excessive moisture in most cases, causing excessive molding and some spoilage. Hams should be aged for about six months minimum to get a good aged flavor.

Eight to ten months will give a high flavored ham. Bacon and shoulders should be consumed within six months for best results. Another problem is keeping lard from becoming rancid. Just drain it off and seal in half gallon jars while hot. This method will keep

lard for over a year with good results. Fat should be skinned, but in uniform cubes and rendered at a low temperature, this being below smoke point or temperature below 260 degrees F.

If smoke comes from lard, temperatures are too hot, always keep lard stirred to prevent scorching. Anti-oxidants can be used where lard is stored in stands, this usually can be purchased at processing plants. If lard is frozen, it will keep about six months before becoming rancid.

Sausage does not keep in a freezer for long before losing its flavor. If you have more sausage meat than you will use in three months, it may be better to grind some fresh pork and season after it is taken out of the freezer. Remember! Fresh pork should not be kept much longer than six months for best results.

I have had a number of requests for a good recipe for mixing pork

See Preserving Meat, Pg. 5, Sec. 2

ALL TYPES OF LUMBER

Advertisement for Eastern Millworks, listing native and western pine mouldings and contact information.

BEAUTIFUL WALLS OF CONCRETE MASONRY



Exposed concrete block walls add beauty... modern design to today's finest homes... and at the same time save you dollars and dollars on expensive interior finishing... and upkeep. Masonry paints are now available in many beautiful decorator colors... for complete harmony of masonry walls and other interior and exterior decorations. For quality block... precision made on Stearns equipment... see us today.

USE CONCRETE MASONRY FOR STRUCTURAL BEAUTY
MOREHEAD BLOCK & TILE CO., INC.
Phone 6-3970
NEW BERN HIGHWAY MOREHEAD CITY, N. C.

Iowa Prisoners Plan Summer Styles for 1957

Fort Madison, Iowa (AP)—Inmates of the Iowa State Penitentiary here are looking forward to being "the best dressed cons of 1957."

Short sleeved, wide collared, open throated sport shirts will be standard dress for prisoners next summer. The new clothing already is in production at the state men's reformatory at Anamosa.

Fund to Fun

Eugene, Oreg. (AP)—Students at the University of Oregon turned a fund-raising campaign into a fun-raising affair. Closing hours at the women's living organizations were extended to 2 a.m. one Saturday night. But the women's escorts had to pay a premium of a penny-per-minute past the normal 1 a.m. closing hours to the Associated Women Students' scholarship fund. Total collected—over \$140.

Certified Ready-Mixed Concrete



Put in a concrete driveway and get out of the mud forever. No more muddy tires. No more muddy shoes. No more dirty rugs or floors. No more extra cleaning bills. No more ugly yards. Let us tell you how little a concrete drive costs.

Carteret Concrete Co.

Highway 70 Phone 6-4859 Morehead City

Florida Highways Will Have Signs in Color

Tallahassee, Fla. (AP)—Florida highways soon are to blossom with added color which is supposed to keep tourists from getting lost.

Principal highways will have their own, distinctive marker colors so it'll be harder to lose them at busy intersections.

For example, U. S. Highway 27, the first route to be marked, will have its black and white markers replaced by green ones to be put up every 2 1/2 miles from the Georgia line to Miami. U. S. Highway 1 will have red markers and so on.

The streets of Baltimore were lighted by gas as early as 1816.

B.P.S. Paint — Painter's Supplies

Building Hardware — Stanley Tools
Door Frames — Window Frames
All Kinds of Millwork — Mouldings

Now is the Time for Storm Doors and Windows
Ask About Our Installation Service

LOCKHART MILLWORK CO.

Highway 70 West • Morehead City
Phone 6-3918

75,000 SQ. FT. OF FLOOR SPACE FILLED WITH BUILDING SUPPLIES



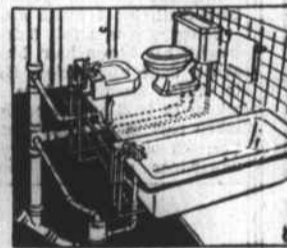
When You Buy At GENERAL WHOLESALE BUILDING SUPPLY CO. OF NEW BERN

YOU CAN SAVE Up To 60% Off List

BUILDING SUPPLIES
PLUMBING SUPPLIES
Hotpoint APPLIANCES

SAVE \$60 ON THIS CAST IRON 5 FT. TUB OUTFIT WITH CHROME FITTINGS

Complete With 19x17 Lavatory, Commode and seat and all fitting to wall. \$119.95 Only
Other Bathroom Outfits From \$75.00
All Kinds of Pipe, Fittings, ETC. In Our Plumbing Dept.



SAVE! SAVE! SAVE! SAVE!

On Hotpoint Appliances

HERE IS AN EXAMPLE

Hotpoint Automatic Deluxe Range With Fluorescent Lamp, Automatic Oven Temperature Control, Recessed Oven Light, 3 Storage Drawers and many other deluxe features. Lists \$299.95

MANY OTHER HOTPOINT APPLIANCES AT LOW, LOW PRICES.

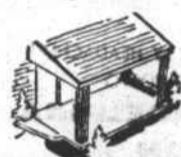
SAVE ON YOUR BUILDING SUPPLIES

Table listing building supplies and prices: DURA SEAL WINDOW Units, K.D. From \$9.95; SHEET ROCK 1/4" Per Sq. \$37.50; CEDAR SHAKE SHINGLES, Per Sq. \$14.95; KIMSUL INSULATION 100 Sq. Ft. From \$4.40; CELLOTEX SHEATING Asphalt coated, per M \$59.95; OAK FLOORING Per 1,000 Ft. From \$199.00; 1/4" PLYWOOD 4x8 Sheets \$3.25; BOAT PLYWOOD 1/4" Fir to 3/4" Mahogany, 4x14 & 4x16 Sheets, From \$13.18

GENERAL WHOLESALE BUILDING SUPPLY CO.

Highway 70, West of New Bern at Building Supply Center
DIAL NEW BERN 5138

Beautify Your Home With Wrought Iron



Made-to-Measure WROUGHT IRON RAILINGS & COLUMNS
Plain and fancy designs. All materials used are solid iron with rust resistant finish.

Free Estimates

MICRO MACHINE COMPANY
Phone 6-4919
Located 6 Miles West of Morehead City Highway 24

R & N FURNITURE CO.

Furniture — Electrical Appliances — Radios
Vinyl — Plastic — Inlaid Linoleum
Cork — Rubber — Asphalt Tile
RUGS

Wall to Wall Carpeting
Venetian Blinds

1211 BRIDGES ST. PHONE 6-3419 MOREHEAD CITY.

COMPLETE BUILDING MATERIALS, SUPPLIES, AND PAINT

Huntley's

Atlantic Highway Phone 2-4871 Beaufort

INSTALL A

DELTA

Forced Air Heating System

As Low As

\$650

- No Other Cost • No Money Down
- 36 Months to Pay

Economy Appliance Store

905 Arendell St. Phone 6-3185 Morehead City

EASY DOES IT!

with one-derful, one-coat

EASY on the eyes!

The Wall-Fix "decorator look" is soft, flat, glare-free... is IQS of the world's finest color!

EASY on the budget!

One coat gives better results than two coats of ordinary paint. So you save! ... every time!

EASY on YOU!

Painting is a cinch with trouble-free Wall-Fix... brushes or rolls on your walls with magic ease!



- SELF-PRIMING!
- STAIN-RESISTANT!
- BUBBLE-FREE!
- DRIES IN A FEW HOURS!
- THRU-DRY!
- TRUE DECORATOR'S FLAT!
- HAND-WEARING ENAMELIZED FINISH!
- MATCHING COLORS IN SEMI-GLOSS!

One-coat Wall-Fix PAINT combines all these features:

By the makers of famous Glidden Paints, Supreme Paint & Color Works, Baltimore 28, Md.

RUPERT E. WILLIS Hardware

912 Arendell St. Phone 6-4011 Morehead City