

Send This Coupon

THE NEWS-TIMES

Enclosed is 35 cents. Please send me a copy of the study plan for The House of the Week, Design HW-87

NAME _____ (Please Print)

STREET _____

CITY _____ STATE _____

You can take this study plan to your bank or other mortgage lender and to your builder and get rough estimates on the cost of construction in this area, as well as an idea of the relation of the cost to your budget.

With this information you will know whether you will want to proceed with construction by ordering working blueprints direct from the architect and asking for bids for the work.

You can get a study plan for The House of The Week by filling in your name and address on the coupon on this page and sending it with 35 cents to this newspaper.

This study plan shows each floor of the house together with each of the four elevations, front, rear and sides of the house. It is scaled at 1/8-inch per foot. It includes a guide on "How to Get Your House Built."

The House of the Week

Modified Dutch Colonial Features Four Floor Levels

By JOHN O. B. WALLACE

Four levels—not just two—feature this unusual eight-room Dutch colonial. It is an example of what can be achieved through modern interpretation of the popular but slightly dated split level design.

Arranged on four different levels, it has—in the words of the noted architect who created it—"all the dignity and charm of the two-story home and all the function of contemporary design."

It has been selected as another distinguished American design for the House of The Week series, and designated HW-87.

There is no better way to obtain a clear concept of the unique arrangements in this design than to take a quick look at each of the four different levels:

Living Room Sunken

1. On the entrance level, there are the kitchen with its separate dining area, the spacious foyer and the family room which optionally can become a formal dining room.

2. On the living room level, four steps below the entrance level, there are the huge, sunken living room (23 ft. by 14 ft. 6 inches) and the study with built-in shelving.

3. On the bedroom level over the living room, there are two bedrooms (14 ft. 6 inches by 14 ft., and 16 ft. by 8 ft. 2 inches) and a bath which opens into the bedroom hall.

4. On the bedroom level over the foyer and five steps higher than the other bedroom level, there are two more bedrooms—first, the guest bedroom, 11 ft. 4 inches by 8 ft. 2 inches, and the fourth bedroom, 12 ft. 8 inches by 11 ft. 4 inches, plus a second bath.

Architect Samuel Paul, who executed this interesting and practical adaptation of the split level design, has this to say of HW-87: "The exterior exudes a spirit of hospitality and gracious living which is repeated in the interior. Shuttered windows and posts on the porch give this a touch of traditional charm, and modern practicality is added in the protective roofline leading from the entryway to the garage door.

A Dutch Front Door

"Many surprises are in store for the guests who come through the front Dutch door into the central hallway. The first sign of welcome is close at hand in the guest closet and powder room off the foyer. The next step might lead into the kitchen which has a three-fold functional value:

"1. It is large and permits freedom of movement.

"2. The excellent equipment adds to its efficiency.

"3. Its beauty makes it a pleasure to work in.

"If guests are escorted through the house, the first step would of course be the dramatic sunken living room, which is down five steps from the center hall. Impressive is the word for this room because a modern adaptation of the old Colonial type stone fireplace recedes into one wall—and a second Dutch door leads down to an outdoor terrace. A door next to the fireplace leads into the private study."

The U-shaped kitchen is a stand out feature. It has a double sink, counter-top range, dishwasher, built-in oven, double window exposure, and an abundance of wall cabinets. The cabinets are finished in natural woods and the counter tops are of heat-resistant plastic.

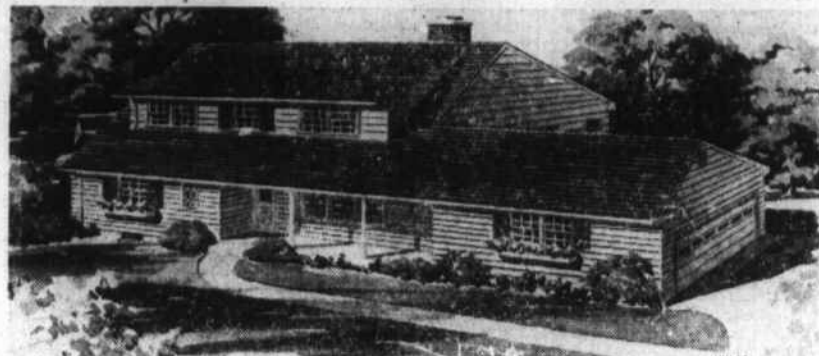
Informal Dining Area

One corner of the kitchen is reserved for informal dining. Stairs to the basement are located just outside the kitchen proper and directly opposite a door which opens onto an outside service porch.

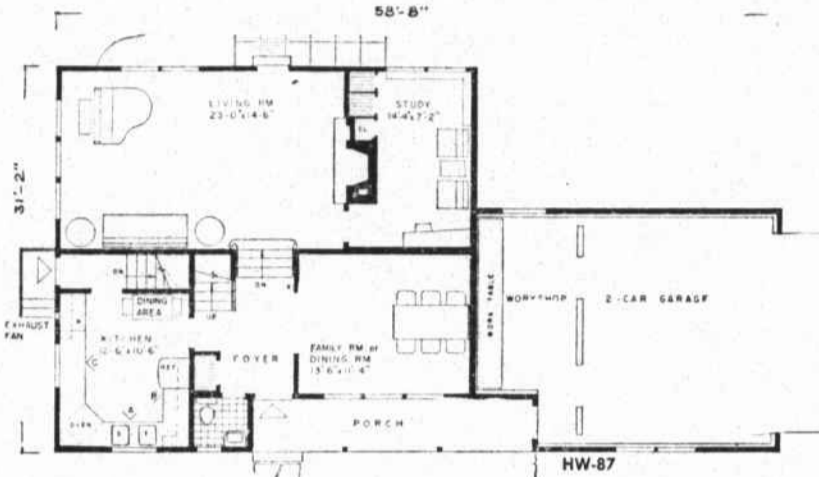
Other interior highlights include a hobby room, or workshop, within the garage area; there is direct access from the garage into the house by means of the covered front porch, and there is a lavatory just off the front entrance foyer.

The fireplace in the living room and its chimney are of brick. The two-car garage is of the same construction as the house and has a 16-foot-wide overhead door.

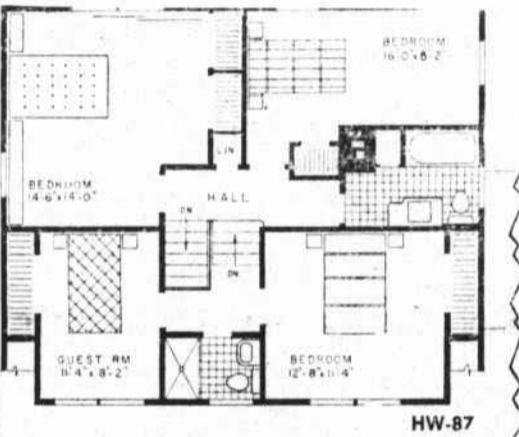
There are extra-sized windows



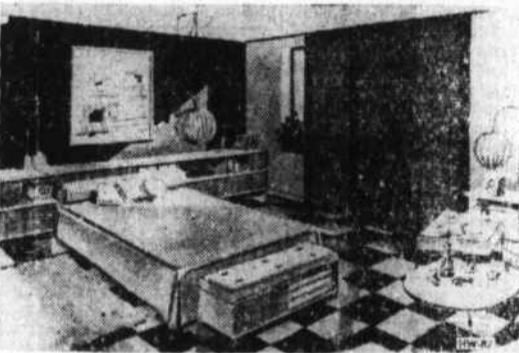
Eight rooms, including four bedrooms, are designed into this Dutch colonial house with shuttered windows and porch posts.



Four different levels are created in this exceptional, eight-room Dutch colonial house.



Three bedrooms and a guest room are on the upper levels.



This interior view shows the built-in cabinets in the master bedroom and the special treatment of the bedroom windows.

in the living room and the family or dining room. Windows throughout the house are double hung and there are planter boxes under the front windows at the extreme left and right.

The exterior finish is of wood siding. Asphalt shingles are used on the roof. All walks are of flagstone. The covered front entrance porch and the rear terrace are of cement finish.

A partial basement under the kitchen-family room area has sufficient space for storage and heating units. A 4 ft. 4 inch crawl space is under the living room-study area.

Statistics

For estimating the building costs of the House of The Week HW-87, here are the square footages, area by area: lower levels, 970 sq. ft.; upper levels, 884 sq. ft.; two-car garage and hobby room or workshop, 480 sq. ft.

The overall house dimensions, including garage, are 58 ft. 8 inches wide by 31 ft. 2 inches in depth.

Head 'Em Off at the Pass Prince Rupert, B.C. (AP)—A \$500 reward has been posted for information leading to arrest and conviction of cattle rustlers in the Bald Hill Range, 175 miles east of here.

ALL TYPES OF LUMBER
NATIVE AND WESTERN
PINE MOULDINGS
EASTERN MILLWORKS
PHONE 2-9641
Highway 70 and 101 Beaufort, N. C.

R & N FURNITURE CO.
Furniture -- Electrical Appliances -- Radios
Vinyl -- Plastic -- Inlaid Linoleum
Cork -- Rubber -- Asphalt Tile
RUGS
Wall to Wall Carpeting
Venetian Blinds
1211 BRIDGES ST. PHONE 6-3419 MOREHEAD CITY.

For Home Beauty... Wrought Iron
Discover now how many ways wrought iron can dress up your home. See how it glorifies your carport, or creates a delightful covered patio plus beautiful lasting furniture. Free estimates, suggestions.
MICRO MACHINE CO.
Box 230 1/2 Newport, N. C. Route 1
2 Miles West -- Highway 24 Phone 6-4919

BUILDING SUPPLIES
See us for all your building needs. Nails, Paint, Wallboard, Tile, Insulation, Roofing.
SAFRIT LUMBER CO.
Lennoxville Road Beaufort Phone 2-4581

NOTICE TO TAXPAYERS

PAY DURING THIS MONTH TO AVOID ALL INTEREST CHARGES

STARTING ON FEBRUARY 1 INTEREST WILL BE ADDED TO 1957 TAXES

Don't Delay - - Pay Today

E. O. MOORE

Carteret County Tax Collector

Legal Notices
NOTICE OF SERVICE OF PROCESS BY PUBLICATION
State of North Carolina
County of Carteret
In the Superior Court
Frank Miner Wheeler
vs.
Katherine Strong Wheeler
To Katherine Strong Wheeler:
Take Notice that:
A pleading seeking relief against you has been filed in the above-entitled action.
The nature of the relief sought is as follows: that plaintiff seeks an absolute divorce from you on the grounds of two years separation.
You are required to make defense to such pleading not later than February 25, 1958, and upon your failure to do so the party seeking service against you will apply to the court for the relief

Legal Notices
sought.
This 3rd day of January, 1958.
A. H. James
Clerk Superior Court
j7-14-21-28
NOTICE OF SERVICE OF PROCESS BY PUBLICATION
North Carolina,
Carteret County
In the Superior Court
C. H. Miner, Jr.
vs.
William Scott
To William Scott:
Take notice that a pleading seeking relief against you has been filed in the above-entitled action. The nature of the relief demanded is the payment of money due the plaintiff under a promissory note. An Order of Attachment has been issued by the undersigned to the sheriff of Carteret County commanding him to attach any and all of your property in Carteret County. You are required to make defense to such pleading not later than February 24, 1958. Upon your failure to do so, the party seeking service against you will apply to the court for the relief sought.
This 3rd day of January, 1958.
A. H. James
Clerk of Superior Court
j7-14-21-28

FOR THAT PEACHES OR CREAM COMPLEXION, USE...
CULLIGAN soft water SERVICE
C. E. "Cliff" Edwards
Mgt.
Phone 6-5620

REDDY MIX by DAVE LINDSAY

YES, SON, YOUR FATHER IS A SELF MADE MAN.
MOM, DON'T YOU THINK HE KNOCKED OFF WORK TOO SOON?
CARTERET CONCRETE CO.
MAKE EVERY EFFORT TO GIVE YOU THE VERY BEST.
CARTERET CONCRETE Co.
6-4859 Certified READY MIXED CONCRETE
HIWAY TO W... Morehead City

BUILD PATIO, STEPS, WALKS AND TERRACES with... CONCRETE MASONRY
ATTRACTIVE
INEXPENSIVE
PERMANENT
Easy to lay, long lasting, and attractive concrete masonry blocks are the ideal material for building steps, terraces, and patios... especially for the "DO-IT-YOURSELF" fan of today. Concrete blocks are inexpensive, easy to maintain and add beauty and value to your home. For quality block... precision made on Stearns equipment... see us today.
DO IT TODAY—THE CONCRETE MASONRY WAY
MOREHEAD BLOCK & TILE CO., INC.
PHONE 6-3970
NEW BERN HIGHWAY MOREHEAD CITY, A. C.

For the best in Floor Work
Call
Fred Harvey
2-3002
Complete floor finishing—Plasti-Coat, sanding, varnishing, polishing and tiling
"You name it—Fred can do it"
Highway 101, Box 119
Beaufort, N. C.

DO YOU REALIZE HOW MUCH YOU CAN SAVE
When You Buy At
GENERAL WHOLESALE BUILDING SUPPLY CO.
BORG-WARNER WARM AIR
FURNACE
Complete With Ducts, Etc.
Retail Price\$599.00
Our Price\$399.00
YOU SAVE \$200
BUY ALL YOUR BUILDING SUPPLIES HERE
General WHOLESALE BUILDING SUPPLY CO.
CAROLINA'S LARGEST AND MOST COMPLETE BUILDING SUPPLY HOUSE
HIGHWAY 70 IN MILES FROM NEW BERN CITY LIMITS