

Send This Coupon

THE NEWS-TIMES

Enclosed is 35 cents. Please send me a copy of the study plan for The House of the Week, Design X-43

NAME _____ (Please Print)

STREET _____

CITY _____ STATE _____

You can take this study plan to your bank or other mortgage lender and to your builder and get rough estimates on the cost of construction in this area, as well as an idea of the relation of the cost to your budget.

With this information you will know whether you will want to proceed with construction by ordering working blueprints direct from the architect and asking for bids for the work.

You can get a study plan for The House of the Week by filling in your name and address on the coupon on this page and sending it with 35 cents to this newspaper.

This study plan shows each floor of the house together with each of the four elevations, front, rear and sides of the house. It is scaled at 1/8-inch per foot. It includes a guide on "How to Get Your Home Built."

Nazarene Gains
Kansas City, Mo. (AP) — The Church of the Nazarene started 232 new congregations in 1958 — an average of two new ones every three days — a record for the denomination. Church membership climbed about 9,500 persons to 301,700.

The House of the Week

This Plan Provides Four Bedrooms on Limited Budget

By DAVID L. BOWEN

A painful paradox frequently plagues the search for a perfect home plan.

The reason most people want a new house is that their present quarters are too small. And here's the paradox:

They're looking for a new home because the family is big. But big houses usually have big price tags. The houses they can afford don't provide them with enough bedrooms; the houses that provide the needed bedrooms are beyond their price range.

Because of this, many people endure cramped living because they don't believe they can afford a house that would make them comfortable.

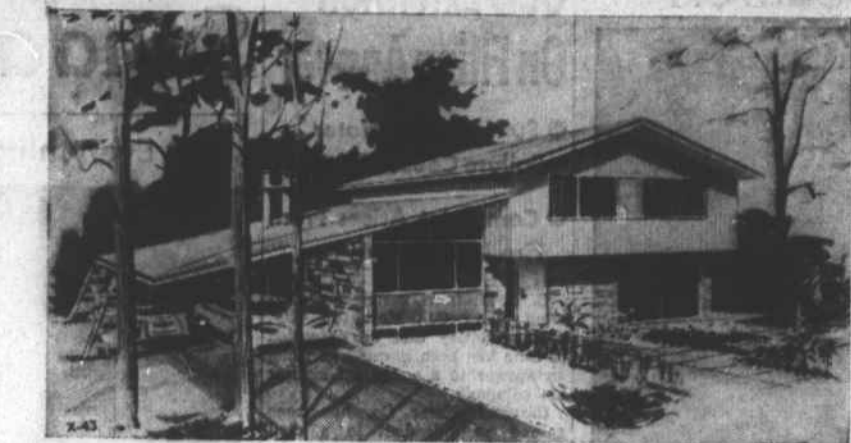
Architect Samuel Paul had the family in this predicament in mind in designing X-43 in the House of the Week series. He set out to use his architectural skill to achieve the greatest amount of house for the least amount of money.

The home that came off his drawing board has four bedrooms, 1 1/2 baths, living dining and family rooms, kitchen, recreation, utility and laundry rooms.

He used the split-level framework and gave the house an appearance as modern as tomorrow.

X-43 yields an exceptionally large amount of area on a minimum amount of costly excavation and foundation work. Basement space is required only under the living room. The house has a car-por instead of a garage.

Clean, simple roof lines save labor and materials. The prefabricated fireplace called for in the plan requires no elaborate brick chimney work. It also can be



Striking modern luxury: This impressive four-bedroom house has a rich appearance that belies the cost-cutting that went into its design. Slab construction under most of the house holds expensive excavation to a minimum. The habitable area is 1,639 square feet. It was designed for a big family building on a budget.

placed anywhere desired along the outside living room wall.

The separate levels and individual areas set apart on these levels produce a great deal of personal privacy and interest where required," Paul explains. "This is a feature overlooked in too many modern, large family houses."

The main entrance opens on a large foyer, containing both a big closet and a lavatory easily reached from the working and entertaining areas. The dining room, kitchen and family room are on this entry level.

The big open kitchen is tied in closely with the family room, separated from it only by the useful family dining bar. The kitchen is

equally convenient both to the dining room and the outdoor terrace in the rear.

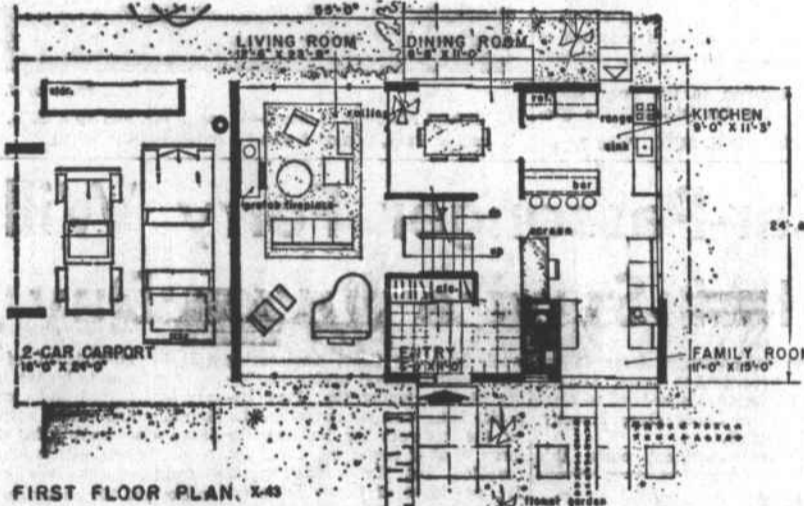
Sliding glass doors in the dining room open on the terrace, setting the stage for pleasant outdoor living.

The living room is large and completely cross-ventilated. It runs the entire depth of the house on the middle level and at one end looks down—through an iron railing—upon the dining room.

The upper level contains a bath and four bedrooms, each with its own built-in storage unit of closet and drawers. The hall and stairwell are dramatically lit by the high full-width window over the stairs.

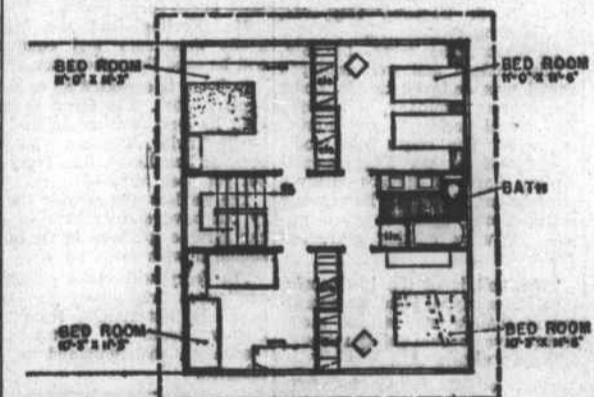
The small basement contains laundry and utility rooms, plus a second recreation room. This space, of course, could be left in an unfinished state for completion long after original construction.

Bedroom, living room and entry levels have a total of 1,639 square feet of space. The basement offers 295 more square feet. The house is 55' wide and 23' 8" deep.



FIRST FLOOR PLAN, X-43

Floor plan: Large living room gains glamor by its elevation a few steps up from the entry level. Kitchen and family room blend together to give warm air of spaciousness to both areas. Sliding glass doors in dining room open on inviting outdoor terrace.



Bedroom level: Each of the four bedrooms has its own built-in storage unit of closet and drawers.

NEARLY EVERYONE IN CARTERET COUNTY READS THE CARTERET COUNTY NEWS-TIMES

Port Calendar

Morehead City State Port

Black Tern — Due Friday to pick up tobacco and fish oil for Europe.

Werratal—Due Monday to load tobacco for Germany.

Fernwave — Due April 11 to pick up dry milk for Algeria.

Luna Maerk—Due April 11 to load tobacco for Bangkok.

Orezaba—Due April 15 to load dry milk for Morocco.

Jehovah Witnesses To Meet in Wilson

A three-day Christian convention of Jehovah's Witnesses will be held in Wilson April 24-26 at the National Guard Armory.

In making the announcement, D. R. Barnes Jr., presiding minister of the Morehead City congregation of Jehovah's Witnesses, said that the convention is one of two such conventions held each year in eastern North Carolina. During the three days more than 900 delegates from some 25 counties are expected to attend.

The convention will be sponsored by the Watchtower Bible and Tract Society of Brooklyn, N. Y. and the delegates will hear speakers from there and from the congregations in eastern North Carolina.

It's the reason for SWARMING TERMITES

ORKIN

World's Largest Pest Control Co.

PA. 6-3848

Civil Suit

(Continued from Page 1)

cery store and Dr. Lewis's office, other businesses wiped out in the fire were Herring's jewelry store, Dr. L. W. Moore's office, Durham Life Insurance office, Service Shoe shop, the Bargain Center and the Western Union office.

Further damage was prevented by drafting saltwater from Taylor's Creek for use in quenching the flames.

A brick building is now being erected by the Potter family on the site of the drug store, the grocery store and Herring's jewelry store.

Newfoundland lost its status as a British dominion in 1933 and became a crown colony—subject to final rule of the British crown.

Driver Cited Following Wreck

Elwood Ray Bass of Wilson was charged with drunk driving early Sunday morning by Lt. Joe Smith of the Morehead City Police department after the car which he was driving struck a parked auto at the corner of 29th and Arendell belonging to Russell Robert Willan of Morehead City.

The accident occurred about 1:30 Sunday morning according to police reports, and resulted in heavy damage to the Bass auto. The Willan car escaped with only minor damage to the rear bumper.

Bass, at the time of the accident, was travelling east on Arendell Street and struck the rear of the Willan car, knocking it into another car that was parked in front of it.

REDDY MIX by DAVE LINDSAY

WHY IS UNBELIEVABLE! SAY, DID YOU KNOW THAT EVERY TIME I BREATHE—A MAN DIES?

WHY DON'T YOU BUY A GOOD MOUTH STERILIZER?

WORD OF MOUTH SAYS CARTERET CONCRETE CO. IS THE PLACE TO GO FOR THE BEST VALUES.

Carteret CONCRETE CO.

Artificial READY MIXED CONCRETE

Call 6-4859 Hwy. 70 W MOREHEAD CITY, N. C.

AN EXTRA ROOM For your HOME

Family on-the-grow? Need more living space? Adding one or more rooms to your present home may well prove to be the most economical and satisfactory solution.

SEE US FOR ALL YOUR BUILDING NEEDS

SAFRIT LUMBER CO.

Phone PA 8-3843
Lennoxville Road • Beaufort, N. C.



CONCRETE MASONRY

ATTRACTIVE
INEXPENSIVE
PERMANENT

Easy to lay, long lasting, and attractive concrete masonry blocks are the ideal material for building steps, terraces, and patios... especially for the "DO-IT-YOURSELF" fan of today. Concrete blocks are inexpensive, easy to maintain and add beauty and value to your home. For quality block... specify made on Spencer equipment... see us today.

DO IT TODAY—THE CONCRETE MASONRY WAY
MOREHEAD BLOCK & TILE CO., INC.
Phone PA 6-3870
NEW BERN HIGHWAY MOREHEAD CITY, N. C.

APRIL				
SUN	MON	TUE	WED	THU
			1	2
3	4	5	6	7
8	9	10	11	12
13	14	15	16	17
18	19	20	21	22
23	24	25	26	27
28	29	30	31	

Need Money For TAXES?

See ANY First-Citizens Office for a Low-Cost Personal Loan!

You'll like the fast, friendly loan service available at every First-Citizens office. Discuss your loan requirements in confidence and without obligation. Convenient monthly payments may be arranged to fit your budget. Come in soon. We will be pleased to serve you.

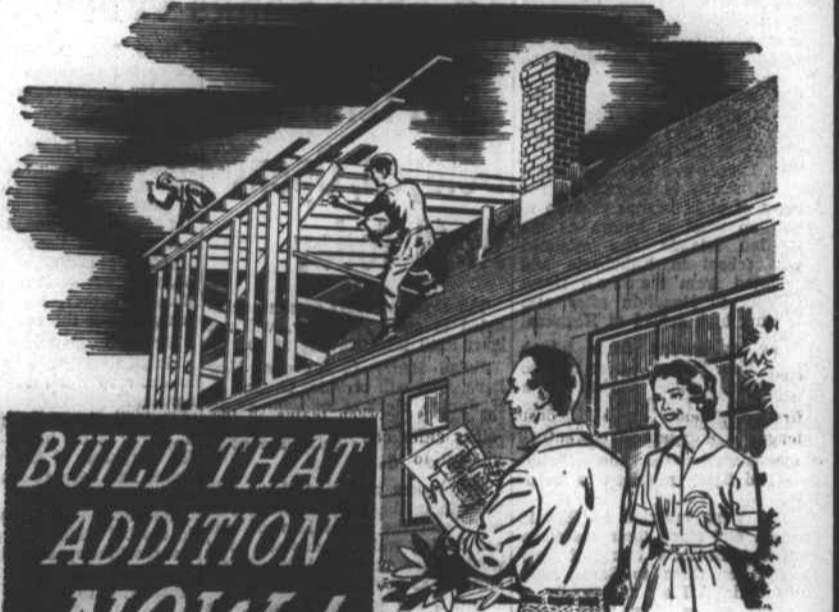
See A First-Citizens Personal Loan Officer At:

Conveniently located in Morehead City, Beaufort, Newport, Swainsboro, Cherry Point, Havelock and in other fine N. C. communities.



MEMBER FEDERAL DEPOSIT INSURANCE CORPORATION

WHOLESALE PRICES



BUILD THAT ADDITION NOW!

Buy Your Supplies

At Our Famous

WHOLESALE PRICES

Family on-the-grow? Need more living space? Adding one or more rooms to your present home may well prove the most economical and satisfactory solution.

HERE ARE A FEW PRICES

Window Units Completely Weatherstripped. Let us show you the extra features. Prices begin at... **\$7.95** K.D. Assembled \$1.00 More

Flush Doors Interior — Begin at... **\$4.53**

Flush Doors Exterior with Glass— Begin at... **\$11.95**

Paint Best Grade Davis Outside White, per gal.\$4.75
Blue Ridge Outside White, gal.\$3.49
Interior Latex Wall Paint, gal.\$2.95

Water Pumps Flint & Walling Pumps. 470 Gallons Per Hour. Complete With Tank... **\$65.95**

Bathrooms Complete Bathroom, Tub, Closet and Lavatory, With Fittings to Wall. Only... **\$99.95**

WHATEVER YOUR BUILDING NEEDS MAY BE, WE CAN SERVE YOU... AND OUR EXPERIENCED SALES FORCE WILL BE GLAD TO ADVISE YOU WITH YOUR PROBLEMS

GENERAL WHOLESALE BUILDING SUPPLY CO.

Carolina's Largest and Most Complete Building Supply House
Highway 70 West, 1 1/2 Miles from New Bern Dial ME 7-5138

WHOLESALE PRICES