

**Help Wanted**

**ATTENTION LADIES!**

What section of Carteret County do you live in? Do you have an Avon representative? Perhaps there is an opening and an earning opportunity for you.

WRITE MANAGER  
BOX 1295 — KINSTON, N. C. d25

**For Rent**

**TWO-ROOM FURNISHED APARTMENT.** kitchenette, private bath. Special weekly or monthly rate. Oceanana Motel, Atlantic Beach.

**NICE, COMPLETELY FURNISHED** apartment with private entrance from street. Occupies whole upstairs. Nice neighborhood. Call or see Mr. Davis, Broadway Cafe, Morehead City. d22

**TWO BEDROOM HOUSE.** Telephone PA6-5091.

**FURNISHED DUPLEX APARTMENT.** 1805-A Arendell St. Phone PA8-3544 or PA8-4967.

**SEVERAL NICE 3 BEDROOM** houses, furnished and unfurnished. Also a number of nice apartments. C. H. Freeman, Agent, telephone PA6-3822.

**FURNISHED 3-BEDROOM HOUSE** overlooking beautiful Bogue Sound. A. C. Hodges, Ho-Ho Village, highway 24, six miles west of Morehead City. Phone PA6-4982.

**FOUR-ROOM HOUSE WITH** bath, venetian blinds, stove, refrigerator, heater. Phone K. W. Wright, PA8-4988.

**FURNISHED APARTMENTS.** 3 rooms or 1-room efficiency. \$50.00. Adults only. 123 West Front St., Beaufort. Phone PA8-4961. d29

**M & N APARTMENTS**

Two bedrooms, living room, dinette, kitchen, private bath, garbage disposal. All major appliances furnished. Also water and garage. Downstairs apartment available Aug. 20. Contact J. H. Neal, Agent, phone PA 8-3258, Beaufort.

**SMALL TWO BEDROOM HOUSE.** Kitchen only furnished. \$40 a month. Phone PA 6-4555.

**RENT OUR RUG SHAMPOO** equipment. Everything you need to shampoo your rugs and carpets quickly and easily. Clark shampoo equipment is safe and easy to use—gives you professional results. You save half the cost. Only \$7.00 per day. R&N Furniture Co.

**THREE BEDROOM FURNISHED** house for rent. Phone PA6-4052.

**VERY NICE FURNISHED APARTMENT.** 1 1/2 bedrooms. 2805 Arendell St. C. H. Freeman, Agent. Phone PA6-3822.

**Special Notices**

**CARD OF THANKS**

The family of Ezra L. White wishes to express their appreciation to relatives and friends for their sympathy and many kindnesses shown during our recent bereavement. d22

**NERVOUS DISORDERS — WHY suffer?** Modern chiropractic specializes in relieving spinal nerve irritations, the cause of so many nervous disorders. Lewis Chiropractic Clinic, 1500 Evans. Phone PA6-3312.

**Legal Notices**

**EXECUTORS' NOTICE**

Having qualified as executors of the estate of Sarah Lovina Whitehurst, deceased, late of Carteret County, N. C., this is to notify all persons having claims against said estate to present them to the undersigned at Gloucester, N. C., on or before the 8th day of December, 1960, or this notice will be filed in bar of their recovery. All persons indebted to said estate will please make prompt payment.

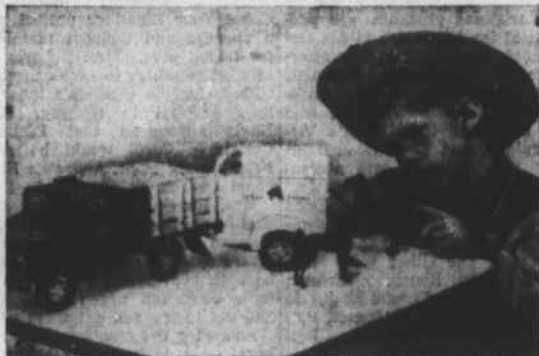
This 2nd day of December, 1959.  
Richard Henry Whitehurst and John Monroe Whitehurst,  
Executors d8-15-22-29 j5-12

**NOTICE OF TRUSTEE'S SALE OF REAL ESTATE**

Under and by virtue of power and authority contained in that certain deed of trust executed and delivered by Claude Gillikin and wife, Connie G. Gillikin, and recorded in the office of the Register of Deeds for Carteret County, N. C., in Book 171, page 364, and because of default in the payment of the indebtedness thereby secured, and failure to carry out and perform those stipulations and agreements there-in contained, and pursuant to demand of the owner and holder of the indebtedness secured by said deed of trust, the undersigned will expose for sale at public auction to the highest bidder for cash, at the usual place of sale in the Carteret County courthouse at 1:00 p.m. on January 6, 1960, all that certain real estate and appurtenances thereto, in Carteret County, and further described as follows:  
Being in Harkers Island Township, and; Beginning at the Northeast corner of the Bert S. Davis property, which is the Southeast corner of the Baptist Church property, at the intersection of a ditch paralleling a 20 foot road and a ditch which is the dividing line between Bert S. Davis and the Baptist Church; thence a Westerly course with the Davis-Baptist Church line 100 feet to the Northeast corner of the Gracie Lewis property; then with the Gracie Lewis line a Southerly course 100 feet to a stake; thence an Easterly course parallel with the Baptist Church line on the ditch, 100 feet, at the side of the access road; thence with the road a Northerly course 100 feet to the beginning.  
Subject to unpaid taxes and assessments of every kind and subject to such conditions, liens, restrictions and reservations as appear in the chain of title, if any. This sale will be held open ten days for upset bids as by law required. The successful bidder will be required to make a cash deposit at the time of sale of ten per cent. If deposit is not made the property will be resold immediately.  
This November 30, 1959.  
M. K. Harrill, Trustee d15-22-29 j5

**Toys Reflect Age We Live In**

By DOROTHY ROE  
Associated Press Women's Editor  
The Space Age may frighten grown-ups, but it's all in the day's play for children.  
Proof of this fact is the predominance of space toys in the Christmas toy pack this year. Children from toddlers to teen-agers will be reconstructing Cape Canaveral equipment, shooting the moon and maneuvering satellites in orbit.  
Even electric trains have rocket launching attachments. Girls as well as boys get in the act with special kits beamed to the female atomic scientist.  
The younger generation takes guided missiles and space ships in stride, says Melvin Freud, president of Toy Guidance Council. These are the things which will be commonplace when they grow up, and so they get conditioned to changing times with playroom counterparts.



Horses are here to stay . . . proof is juvenile interest in such toys as this new horse trailer, designed from models used to transport the best thoroughbreds from track to track.



Hop to the latest in defense, Junior eyes miniature of latest Navy pom pom gun. Army tanks and atomic cannon, at recent Christmas preview.

But there are other Toyland reflections of modern living. There is, for instance, a record turnout of Wild West equipment, with the most authentic replicas of pioneer shooting irons ever presented to small desperadoes.  
The fast-changing scene of suburbia, too, has exerted influence on the year's toys. New construction kits provide short-cuts for reproducing the latest trends in housing developments, down to the last detail of the shopping center.  
America's concern for dressing up the home is evidenced in modern styling of doll houses and playroom furniture. The pastel matched kitchen equipment is a favorite of modern-minded little girls.  
Toy designers also continue to dream up new approaches to career training. There is a new version of the hospital cart, for instance, with equipment for blood transfusions and other emergencies, for the juvenile doctor-nurse team.  
Girder panel sets help the future engineer produce super-highways. The astronomer, the entomologist, the food chemist and the geologist are provided with various kits to spark career interest.  
A topical note in the wheel toy lineup is the horse van and the sportsman's miniature boat trailer.  
The junior artist, too, has a wide range of activity. Watercolor crayons permit a fast switch from plain crayon work to finger paint, just by using water.  
Toyland hits a new high in musical instruments this year, too. New ideas include a roll harmonica and xylophones that achieve broader tone effects, as well as a table-model electronic organ.  
For young hobbyists, new creative play activities range from a kit for making costume jewelry to a two-color printing press.

But there are other Toyland reflections of modern living. There is, for instance, a record turnout of Wild West equipment, with the most authentic replicas of pioneer shooting irons ever presented to small desperadoes.

The fast-changing scene of suburbia, too, has exerted influence on the year's toys. New construction kits provide short-cuts for reproducing the latest trends in housing developments, down to the last detail of the shopping center.

America's concern for dressing up the home is evidenced in modern styling of doll houses and playroom furniture. The pastel matched kitchen equipment is a favorite of modern-minded little girls.

Toy designers also continue to dream up new approaches to career training. There is a new version of the hospital cart, for instance, with equipment for blood transfusions and other emergencies, for the juvenile doctor-nurse team.

Girder panel sets help the future engineer produce super-highways. The astronomer, the entomologist, the food chemist and the geologist are provided with various kits to spark career interest.

A topical note in the wheel toy lineup is the horse van and the sportsman's miniature boat trailer. The junior artist, too, has a wide range of activity. Watercolor crayons permit a fast switch from plain crayon work to finger paint, just by using water.

Toyland hits a new high in musical instruments this year, too. New ideas include a roll harmonica and xylophones that achieve broader tone effects, as well as a table-model electronic organ.

For young hobbyists, new creative play activities range from a kit for making costume jewelry to a two-color printing press.

**Traditional Customs Hold First Place in America**



Do-it-yourself tree: Decorator Frances Lee of New York designed it especially for people who want to celebrate Christmas with a minimum of effort. The tree comes with 88 ornaments or already trimmed.

By VIVIAN BROWN

Americans may stray from the traditional way of old-fashioned Christmas, but they always come back to it. That's something to keep in mind when planning your Christmas decor, says New York decorator Frances Lee.  
"Recent Christmases have turned up turquoise trees, some trimmed with roses, trees with forget-me-nots, fans and shells. These had no real connection with Christmas, but they appealed to people who wanted to be different."  
"The reaction came from children, and their voices count at Christmas," Miss Lee says. "Even children who'd never had the old-fashioned Yuletide liked it when they saw it in the story books."  
"You'll find red and green in the most sophisticated fashion - conscious homes again this year," explains Miss Lee, "because there is no way to beat it's Yule splendor."  
She predicts too that older people with married children who have tried to escape from Christmas festivities, and Yuletide travelers will take time out to celebrate the season. One indication of it is a small do-it-yourself Christmas tree which Miss Lee designed for those purposes.  
"A tiny tree that may be put on the dining table or even carried in a bag to a resort is the answer for many people. One cruise ship is supplying one of these little trees to every one of its passengers during Yuletide to further the Christmas spirit."

The little trees come with an assortment of ornaments, including traditional ones—red Santas, silver snowmen, white and red bells, candy canes, red and gold glass balls, and a gold star on top of the tree.  
Here are some ideas for decorating your home during Yuletide suggested by Miss Lee:  
● Glitter cloth makes an ideal table cloth for the holidays for buffets or seated dinners. Save it from year to year. It comes usually in 36 in. widths in green, red, gold and silver. Six yards may do the trick, cut into two 3-yard pieces.  
Use the pieces lengthwise, overlapping one slightly over the other in the center of the table. If you'd like to make place mats, trim them with beaded or flat holly and berries.

Ohlong place mats may be cut to about 14 in. by 20 in., oval mats 21 1/2 x 23. Trim with braid or holly and berries.  
● A handsome centerpiece could be just a large wreath with a candle on a plate in the center of it.  
● Christmas candles may be decorated with gold paper braid or holly leaves here and there at the candle base.  
● Decorate the front door as a Christmas package with red and green satin ribbon going across and lengthwise like it was a box. In the center, you might put a green wreath, natural pine cones and red berries in bunches on the wreath.  
● Put a large wreath on your front door and fasten an inexpensive red or white boot to it. Fill the boot with a couple of packages and tie a red bow at the top.  
● Buy ordinary glass ball tree ornaments and spread glue on them in spots. Put different color sequins on them and use them on a tree or as centerpiece decorations.  
● Take an ordinary wreath, trim it with natural pine cones or clusters of red berries. Spray pine cones on ends with gold or white paint, and put a red bow on it.  
● Flat "Christmas trees" may be hung on the wall or front door. Use a green ribbon, tied in bows to simulate branches, and then glue it very closely together on a background made of cardboard.

Ohlong place mats may be cut to about 14 in. by 20 in., oval mats 21 1/2 x 23. Trim with braid or holly and berries.

A handsome centerpiece could be just a large wreath with a candle on a plate in the center of it.

Christmas candles may be decorated with gold paper braid or holly leaves here and there at the candle base.

Decorate the front door as a Christmas package with red and green satin ribbon going across and lengthwise like it was a box.

Put a large wreath on your front door and fasten an inexpensive red or white boot to it.

Buy ordinary glass ball tree ornaments and spread glue on them in spots.

Take an ordinary wreath, trim it with natural pine cones or clusters of red berries.

Flat "Christmas trees" may be hung on the wall or front door.

**Whiskey, Locker Stolen From Service Station**

Beaufort police investigated a break-in yesterday morning at the T. T. (Tom) Potter Sinclair service station, Front Street.  
Entrance to the station was made by prying a door loose in the warehouse and back office. Police reported finding a hand truck under the safe in the office but that no evidence of entry into the safe could be found. The only thing reported missing from the office was a fifth of whiskey and a small locker.  
Exact time of the break-in, which occurred during the night, could not be established.

**Negro News**

**Morehead City Hospital**  
Admitted: Wednesday, Miss Martha Davis, Beaufort.

**Thursday, Mr. Adolphus Jones, Mrs. Alice Pridgett, Beaufort.**

**Friday, Mr. George Sharp, Beaufort.**

**Discharged: Thursday, Miss Caroline Jones, Beaufort.**

**Saturday, Mrs. Martha Davis, Beaufort.**

More news appears page 5 section 2 of this issue

**Backward Progress**

Gosben, Ind. (AP) — Elkhart County Surveyor Wilden Snyder is a man who believes in moving forward with the times—when possible. But when he found himself 16 miles from home with a car that wouldn't operate in forward gear, he drove in reverse all the way home.

**Legal Notices**

ist Church; thence a Westerly course with the Davis-Baptist Church line 100 feet to the Northeast corner of the Gracie Lewis property; then with the Gracie Lewis line a Southerly course 100 feet to a stake; thence an Easterly course parallel with the Baptist Church line on the ditch, 100 feet, at the side of the access road; thence with the road a Northerly course 100 feet to the beginning.  
Subject to unpaid taxes and assessments of every kind and subject to such conditions, liens, restrictions and reservations as appear in the chain of title, if any. This sale will be held open ten days for upset bids as by law required. The successful bidder will be required to make a cash deposit at the time of sale of ten per cent. If deposit is not made the property will be resold immediately.  
This November 30, 1959.  
M. K. Harrill, Trustee d15-22-29 j5

**NO MONEY DOWN!**

The Management at Wells Wayside Furniture Co. has Made it Possible for You to Purchase Your Christmas Gifts No-Money-Down — First Payment March 1st.

**BUY NOW PAY LATER**



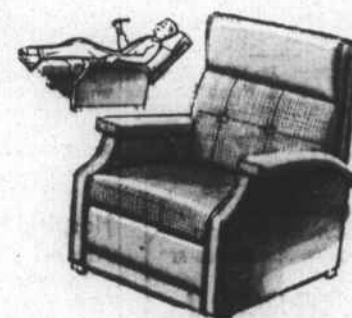
21" Westinghouse TV  
With Sonar Control  
Choice of Finish  
Weekly Payments \$2.88

Convenient terms arranged on any purchase of

**APPLIANCES**  
..the lasting gift that means more!

Electric Dryer ..... \$128.88 up  
Water Heater ..... \$ 69.95 up  
Electric Range ..... \$149.00 up  
Refrigerator ..... \$189.00 up

Lighten her work-load!



5¢ This Chair for 5c with the Purchase of any Living Room Group from Now 'til Christmas



**DESKS**  
Several styles and finishes to choose from.  
Prices start at \$19.95



**4 Speed Automatic Record Player**  
Plays all conventional and stereo records. Exclusive "orchestral sound system." Choice of finishes.  
Prices start at \$149.00



**BUNK BEDS**  
The Perfect Gift for Children. Solid Rock Maple. Complete ..... \$99.95

**RECORDS 5c**  
Long playing Stereo Records with the purchase of a Westinghouse Stereo

**ALL NYLON BLANKETS 99¢**

- Living Room Furniture** by  
● Prestige ● Kroehler  
● Thomasville ● Walker
- Bedroom Furniture** by  
● Drexel ● Kent-Coffey  
● Thomasville ● Bassett
- Dining Room Furniture** by  
● Drexel ● Thomasville  
● Blowing Rock ● Temple-Stuart

**Wells Wayside Furniture**

Highway 70 West

Haveleck

**Woman Commends Men in School**

Newark, N. J. (AP)—Martland Medical Center's director of nursing education claims men studying nursing are brighter than girls, don't cost any more to train and are better fit to handle problem hospital cases.  
Mrs. Alice O. Schoonmaker made the comment after a hospital consultant recommended that the city drop the male nurse training program after 1960.  
Mrs. Schoonmaker pointed out that men can serve alcoholics, mental patients and others with more ease than girls.  
And besides, she says, it's pretty nice to have men around the hospital.