

## Jets Threaten Private Plane; Earl Taylor to Leave Airport

Unless jet aircraft from Cherry Point stay above 1,500 feet over the Beaufort-Morehead City airport, local flyers predict another jet-civilian crash such as that which took the life of Jesse Taylor, young Beaufort pilot, last August.

Yesterday at 12:38 p.m. a Piper PA 12 coming in for a landing at Beaufort-Morehead airport at 500 feet was passed at the same altitude by four jets apparently headed out to sea.

The pilot, who was carrying two passengers on a charter trip from New Bern to Ocracoke, was thoroughly shaken and as soon as he landed reported the incident to Cherry Point control tower.

The pilot, who asked that his name not be used, said that prior to making the trip he had received clearance from New Bern radio through Cherry Point control tower to fly at 1,000 feet and under.

He proceeded from New Bern to Maysville to Bogue and was flying eastward along the beach at 700 feet. When the weather got bad, he decided to land at Beaufort-Morehead airport and was going into the airport at 500 feet when the jets passed him. He was lined up to make his descent on the runway.

Witnesses on the ground also verified the incident. Earl Taylor, manager of the Airport Service station, says jets are not to fly below 1,500 feet. Present restrictions in this area prohibit civilian planes from flying above 1,000.

Mr. Taylor said yesterday's incident is not a rare occurrence. On July 15 at 4:35 p.m. a jet went under a Cessna 195 on its third approach from set-down at 800 feet. The jet went under the Cessna from a 45 degree angle from the rear.

The civilian pilot who reported yesterday's incident said the jets that passed him later appeared to be going into a slow climb. "They had no business being at that altitude, especially when I had clearance for this area under 1,000 feet," he remarked.

In the jet-civilian crash which claimed the life of Jesse Taylor Aug. 24, 1959, it was contended that the jet was approaching Cherry Point at 1,500 feet. Local pilots claim that it is extremely doubtful that Taylor's craft was as high as that.

The findings, as the result of an investigation of that crash, have not yet been issued.

## Two Men Jailed Following Fight

George McHone, Asheville, and Robert Alliston, Fayetteville, were in the county jail yesterday, charged with fighting in front of Lumie's Drive-In, west of Morehead City.

Deputies George Smith and C. H. Davis were called to the drive-in at noon Saturday. Deputy Smith said McHone hit Alliston on the head with a pipe. Alliston was confined to the Morehead City hospital until yesterday morning.

McHone, in addition to being charged with fighting, is also charged with using a deadly weapon, and public drunkenness.

## Morehead Youth Wins



## Tide Table

Tides at the Beaufort Bar

HIGH		LOW
Tuesday, July 26		
10:04 a.m.	4:00 a.m.	
9:58 p.m.	4:01 p.m.	
Wednesday, July 27		
10:41 a.m.	4:29 a.m.	
10:32 p.m.	4:31 p.m.	
Thursday, July 28		
11:19 a.m.	4:57 a.m.	
11:13 p.m.	5:04 p.m.	
Friday, July 29		
11:59 a.m.	5:27 a.m.	
	5:46 p.m.	

## Four Injured In Causeway Crash Sunday

Four persons were admitted to the Morehead City hospital after a crash at 9:45 p.m. Sunday on the Beaufort-Morehead City causeway. A car driven by Stell Stephens, Newport Negro, went out of control, hit three approaching cars, snapped off a utility pole and crashed into the side of a garage.

Injured were Mrs. Patricia T. Polly, 114 Orange St., Beaufort; Stephens, Rose Ann Stephens and Mary Murphy, all of Newport.

Patrolman W. J. Smith Jr., who investigated, said Victorio and Clinton Sinclair, who were in the Stephens car, were charged with the public drunkenness. According to the patrolman, Stephens was driving a 1953 Dodge toward Morehead City.

He swerved over to the left side of the highway and hit three cars headed toward Beaufort. Driving one of them, a 1958 Dodge, was Reuben George, Marshallberg. Damage to this car was estimated at \$50.

Driving the second car hit, a 1960 Chevrolet, was Kenneth F. Frady, Spartanburg, S. C. Damage to that car was estimated at \$600. Mrs. Polly was driving the third car, a 1960 Rambler. Damage to that car was estimated at \$800.

Charges against Stephens are pending.

## Station Entered, Truck Stolen

Morehead City police were on the lookout yesterday for a yellow 1959 International pickup truck stolen Saturday night from the Jefferson hotel parking lot. Theft of the truck is believed linked with a robbery at Gant's service station at 4th and Arendell streets.

Chief Herbert Griffin said cigarettes and cigars were taken from the station. Entry was gained by breaking a window in the ladies' rest room.

The burglar then attempted to start a car parked next door, owned by Earl Holt. An attempt was made to turn the switch with a knife.

Failing in that, the burglar, or burglars, apparently went to the hotel parking lot nearby and took the pickup. There were no keys in the switch. The chief said the truck was probably started by rigging the wiring system.

The truck was owned by the Cummins Diesel firm whose employee, Grady Lowe, is staying at the Jefferson while doing work at Atlantic. He missed the truck Sunday morning.

Investigating the thefts are patrolmen E. D. O'Neal Jr. and J. V. Gialmo.

## Boys Arrested For Petty Thefts In Beaufort

Two boys, one 12 and one 14, have been apprehended by the sheriff's department for breaking into G. T. Spivey's store, Beaufort, Friday night. They have also confessed to numerous other petty thefts in and around Beaufort during the past three months.

The older boy, now living in Beaufort, originally lived in Morehead City, according to sheriff Hugh Salter, and the other youngster is originally from Ocracoke. The sheriff said that several other boys are being questioned in connection with the thefts.

Taken from the Spivey cash register was \$1.50 in pennies. The boys are the ones who broke into the Museum of the Sea prior to its opening, the sheriff said. Other break-ins to which they confessed:

Mack's beer place, American Legion building and the tin building nearby (took keys out of cars in the tin building and later returned them), Carl Gaskill warehouses, drinks from Dora Dinette, candy and peanuts from Guthrie-Jones, cakes from fishing boats.

Sling shots from the dime store, drinks from the Inlet Inn, Carteret Quick Freeze, Shell station, Math Owens, Toot 'n Tell It (entered twice), \$2.85 from Lewis Motors, money out of Beaufort's dime meters.

Stapler from Bell's drug store, and money from the whale pot in front of Museum of the Sea. The boys also entered Russell Manson's store and The Spot.

The sheriff said arrest of the older boy came as the result of playing hunch. When confronted with evidence that he had entered Spivey's, he readily listed the other break-ins.

The Jeppesen Maersk, Danish vessel, will arrive at Morehead Friday. After loading tobacco, she will leave for the Far East.

## County Ranks 53rd in Per Capita Personal Income

Carteret county ranks 53rd among North Carolina's 100 counties in per capita personal income, according to figures released this month by the Department of Tax Research, Raleigh.

Per capita income in Carteret is \$1,106. This is based on 1958 figures and an estimated population in that year of 26,547. H. C. Stansbury, director of the tax research department, said 1958 is the latest year for which sufficient data was available to reach valid conclusions.

Total personal income for the county is \$29,359,000 annually. The ten top counties of the state, in per capita income, are the following (in order): Mecklenburg, Forsyth, Guilford, New Hanover, Durham, Wake, Onslow, Cumberland, Alamance and Catawba.

Of neighboring counties, Craven ranks 19th, Jones 74th, and Pamlico 94th.

The five counties lowest in per capita income are Brunswick, Tyrrell, Clay, Hyde and Avery. Clay and Avery are in the extreme western part of the state and the other three in eastern Carolina.

## Two Cars Collide Friday At Beaufort Intersection

A Ford driven by William C. Spruill, route 1 New Bern, ran into the rear of a Renault driven by Donnie Dudley, Beaufort, at 12:15 p.m. Friday. The accident happened at Cedar and Live Oak streets, Beaufort.

Patrolman Otis Willis investigated. He said that Dudley had stopped at the stop sign on Cedar street. Damage to the Renault was estimated at \$35. There was no damage to the Ford.

Spruill was charged with following too close, causing an accident.

## Boys Arrested For Petty Thefts In Beaufort

Two boys, one 12 and one 14, have been apprehended by the sheriff's department for breaking into G. T. Spivey's store, Beaufort, Friday night. They have also confessed to numerous other petty thefts in and around Beaufort during the past three months.

The older boy, now living in Beaufort, originally lived in Morehead City, according to sheriff Hugh Salter, and the other youngster is originally from Ocracoke. The sheriff said that several other boys are being questioned in connection with the thefts.

Taken from the Spivey cash register was \$1.50 in pennies. The boys are the ones who broke into the Museum of the Sea prior to its opening, the sheriff said. Other break-ins to which they confessed:

Mack's beer place, American Legion building and the tin building nearby (took keys out of cars in the tin building and later returned them), Carl Gaskill warehouses, drinks from Dora Dinette, candy and peanuts from Guthrie-Jones, cakes from fishing boats.

Sling shots from the dime store, drinks from the Inlet Inn, Carteret Quick Freeze, Shell station, Math Owens, Toot 'n Tell It (entered twice), \$2.85 from Lewis Motors, money out of Beaufort's dime meters.

Stapler from Bell's drug store, and money from the whale pot in front of Museum of the Sea. The boys also entered Russell Manson's store and The Spot.

The sheriff said arrest of the older boy came as the result of playing hunch. When confronted with evidence that he had entered Spivey's, he readily listed the other break-ins.

The Jeppesen Maersk, Danish vessel, will arrive at Morehead Friday. After loading tobacco, she will leave for the Far East.

## Beach Firemen Get Three Calls

Atlantic Beach fire department answered three calls in less than 10 hours Monday. At 12:30 a.m. the firemen put out a brush fire between Club Colony and the Dunes club. The fire is believed to have started from a cigarette tossed from a car.

At 3 a.m. Monday, Atlantic Beach and Morehead City firemen answered a call to the Emerald Isle motel where a bed had caught fire. The room where the fire occurred was badly damaged.

Beach fire chief William Barts said the blaze probably started as the result of someone smoking in bed. Damage was estimated at a thousand dollars.

Morehead firemen also assisted beach firemen at 8 o'clock yesterday morning at Money Island where the cottage of Fitzgerald Wallace, Kinston, caught fire.

The occupant had left the house about 35 minutes before the fire broke out, bound for Kinston. Firemen said the oven had been left on. The kitchen was termed a total loss and the rest of the cottage was damaged by smoke.

## Driver Dies

Virgil L. Bailey, USCG, Jacksonville, Fla., who was seriously injured last Tuesday morning when his convertible turned over on highway 24, died seven hours later in the hospital at Camp Lejeune. Patrolman J. W. Sykes, who investigated the accident, said he verified late Thursday afternoon rumors to the effect that Bailey's injuries were fatal.

## Eric Rodgers Succeeds D. G. Bell As Fisheries Committee Chairman

D. G. Bell, Morehead City, who has been succeeded by Eric Rodgers, Scotland Neck, as chairman of the state commercial fisheries committee, terms Mr. Rodgers "the best qualified man in the state for the job."

Mr. Bell, who asked Governor Hodges to name his successor as soon as possible after the May 28 primary, said Mr. Rodgers is familiar with fishing problems the entire length of the North Carolina coast.

In addition to the cash prize, Bobby will receive a trophy which will be placed in his school, Camp Glenn.

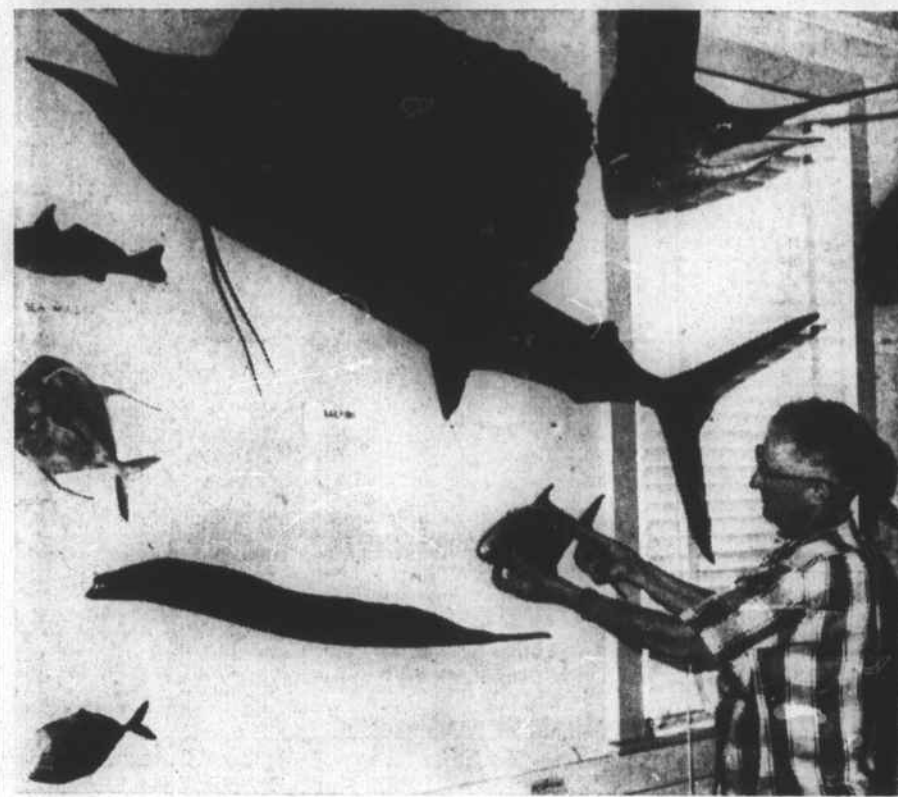
served six and a half years on the Board of Conservation and Development, was one time assistant director of the C&D department and has served as chairman of the commercial fisheries advisory board.

He was instrumental in completely recodifying the commercial fisheries regulations several years ago.

While chairman of the commercial fisheries committee, Mr. Bell effected a compromise in a rock and herring controversy in the Chowan river. Prior to accepting the chairmanship of the committee, he served three terms as Carteret's representative in the legislature.

Mr. Rodgers' term of office will expire in 1965.

## State Fisheries Museum Will Reopen at 10 Today



Harry T. Davis, curator of the state museum, Raleigh, arranges models on the wall.

## Ernest Barrett, Beaufort, To Serve 90 Days in Jail

Ernest Barrett, Beaufort, has been sent to prison for 90 days for failure to comply with a court order.

## Crazy Cat



W. J. Mishaal, Beaufort, owns this cat, a cross between a cat and rabbit. Note its hind leg — formed exactly like a rabbit's.

## Merchants Plan Clearance Sale

Retail merchants of Beaufort and Morehead City agreed Friday night on plans for a Twin City Summer Clearance sale. Members of the Beaufort Merchants association and the Morehead City chamber of commerce are eligible to participate.

Attending the meeting were Oscar Allred, Mr. and Mrs. Jarvis Herring, Mr. and Mrs. Bill Willis, Gilbert Potter, E. W. Downum, James Potter, Garland Scruggs, Grayden Paul, Earl Lewis, L. E. Lewis, Jim Wheatley, Clarence Stamper.

John Steed, V. D. Beasley, Roy Thompson, Leslie Moore, Mrs. Glen Harris, Mrs. Ben Gibbs, Mr. and Mrs. Bill McDonald and J. A. DuBois.

The group met at Captain Bill's restaurant, Morehead City.

Two defendants, Shelton Rogers and Jessie Hughes, each were sentenced to six months in jail in county court last week for failure to comply with former court orders. Judge Lambert Morris suspended the jail term for each on payment of all fines and costs.

Bill Hart, charged with aiding and abetting in an affray was also sentenced to six months in jail and roadwork. His sentence was suspended on payment of \$25 and court costs.

Other defendants, their charges and the findings of the court: Wade Golden—Possession of non-taxpaid whiskey, 60 days in jail suspended on payment of \$10 and costs.

Annette and Ernest Barrett—Possession of non-taxpaid whiskey. The state did not prosecute Annette and for Ernest, judgment was suspended on payment of \$25 and court costs.

See COURT, Page 2

## County Awaits Information on Pupils Who Will Leave Schools in Onslow

H. L. Joslyn, county superintendent of schools, said yesterday that Swansboro school principal, Paul Tyndall, estimated it would take about a week to compile for Carteret information on what children from Carteret are attending Onslow schools and what grades they will be in when school opens in about a month.

Carteret school officials have agreed to school Carteret children now attending Onslow schools. The decision followed protests from Onslow officials who said that they wanted to be paid for educating the children.

A total of 325 children who live in the western part of Carteret now attend Onslow schools, 19 go to White Oak school and 307 to Swansboro school.

Citizens in the western part of the county have organized a committee to handle their problem. Head of the committee is Ben M. Licko. Committee members are Woodrow Bright, the Rev. D. E. Hill, Leland Crumpler and J. O. Weeks.



In the reptiles exhibit is this life-like eastern diamond-back rattlesnake which at one time lived in the vicinity of Havelock.

## Hitch-Hiker Identified

The hitch-hiker who was struck by a hit-and-run car July 16, in front of El's Drive-In, Morehead City, was identified yesterday as Edgar Lee Stanfield, Cherry Point. Deputy George Smith, who investigated, said Stanfield was confined to the hospital for a day with a back injury. Officers are still looking for the car, a red and white Chevrolet, about a 1955 model.

Opening today at 10 a.m. is the Hampton fisheries museum, Morehead City. Located in the commercial fisheries building at Camp Glenn, the museum displays models of marine animals, amphibians, reptiles, birds, collections of sea shells and other exhibits having to do with marine life.

Although the museum was dedicated and opened July 15, 1951, it closed after about a year due to lack of funds to maintain it and to pay someone to keep it open.

Through efforts of the Morehead City chamber of commerce and general assemblyman D. G. Bell, the legislature of 1959 appropriated funds to reopen it and keep a curator at the museum on a part time basis.

Harry T. Davis, curator of the state museum, Raleigh, says present plans call for keeping the museum open from March 1 through October. Hours are 10 to 5 p.m. Tuesday through Saturday and 2 to 6 p.m. Sundays. The museum will be closed Monday.

Mr. Davis has been working on plans for reopening the museum since last July. Rest rooms are being installed and even though the museum will not be complete by today, it's going to open, Mr. Davis says.

He remarked that any museum that is complete is dead, inferring that a useful museum is one that is constantly being improved and added to.

William Palmer, affiliated with the state museum at Raleigh, will act as curator. Designing exhibits is Jay Johnson, who is with the state museum, as well as Roger Ragoet, exhibits designer with the Norfolk museum, who is helping out here while on vacation.

The museum is located on the first floor of the commercial fisheries building and is entered from the main west entrance. After entering, the visitor turns to the left where lettering introduces him to "The Sea Around Us—Cradle of Life."

A chart shows how life has evolved from the sea. Fish models are mounted on the walls or suspended from the ceiling. Most have been given to North Carolina by the federal government. They were made on Pivers Island during the 1930's under a Works Progress Administration program.

The project was fostered by Dr. H. F. Prytherch and the models were on display there for many years.

When the Fish and Wildlife people needed exhibit space for offices and other research work, the fish models were put away and later turned over to the state of North Carolina, with the proviso that the state display them properly and take care of them.

When the Hampton museum didn't work out as hoped, the federal government took them over.

See MUSEUM, Page 2

## Tale of Woe

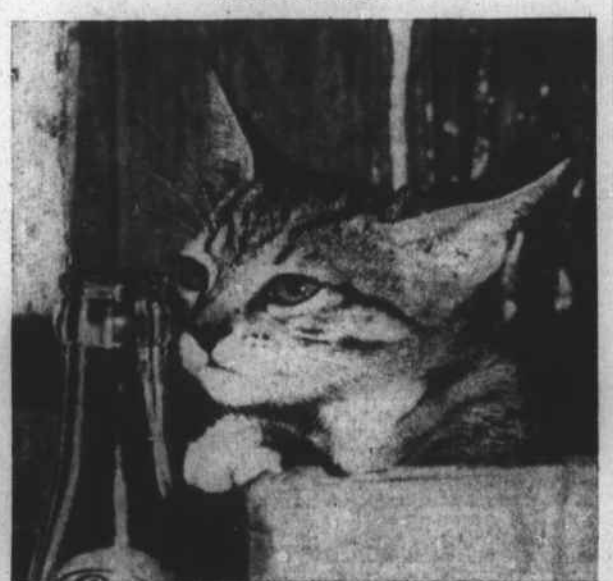


Photo by Reginald Lewis

"What do they take me for, a schnook? That was no catnip tea in THAT bottle!"