

Regional Group Opposes Bridge Site

President Gives Report On Carteret Progress

FCC Approves Western Union Rate Increase

The Federal Communications Commission has approved an increase in Western Union rates on telegrams and money orders. The new rates became effective in some states Wednesday but Louis Norris, manager of the office in Morehead City, said the rates will not be effective in North Carolina until approved by the State Utilities commission.

That approval could come soon or be delayed as long as 90 days, he commented.

A 15-word full-rate telegram will cost 5 cents more and 30-word day

The State Utilities Commission has asked Western Union to defer its increase in this state until Nov. 15. The commission will hold a hearing on the rate request Oct. 6 at Raleigh. The boost would increase Western Union revenue in this state by \$55,000, according to the Associated Press.

letters, 10 cents more. Fifty-word night letters will be boosted an average of less than 10 cents, Western Union says.

Telegraphic money orders will go up 5 cents for amounts under \$100. The increase will be graduated for larger amounts.

The company said the higher charges are necessary to meet increased wage costs resulting from union contract renewals.

The proposed changes will not affect private wire services, telex service or the company's discount plan for volume users.

Silver Bay Reports on Work Along Coast

The Bureau of Commercial Fisheries' research vessel, Silver Bay, has returned to Brunswick, Ga., after 18 days, July 12-30, of exploratory cruising between the Savannah river and Cape Hatteras.

The Silver Bay was looking for clams, scallops, industrial fish and shrimp from 5 to 100 fathoms.

In the vicinity of Bogue inlet and Cape Fear, scattered clams and dead shells were taken in 29 tows with a 14-tooth Fall River clam dredge.

To determine abundance of scallops in the summer, the Silver Bay made 18 tows with an 8-foot modified Georges Bank scallop dredge with a 1½-inch mesh liner. The tows were made along Core banks and produced up to 19 bushels per half-hour drag.

Best catches were in 20-21 fathoms. The scallops were large (61 millimeters average) but the yield per bushel was about 2½ pints, compared with 5 pints in September.

In 70 tows with various fish trawls, with and without roller gear, the largest fish catch was 2,077 pounds in an 80-minute drag. Spots, averaging five to the pound, made up 86 per cent of that catch.

Inside the 10-fathom curve, 27 tows produced scattered brown shrimp and pink shrimp, except for one 40-pound catch of 26 to 30-count brown shrimp (heads off) in a one-hour tow.

Surface trawling at intervals between trawling stations resulted in capture of king mackerel, dolphin and white skipjack.

Five Teachers Give Notice of Leaving

Five teachers, scheduled to teach this year, have resigned in the past few weeks. H. L. Joslyn, county superintendent of schools, reports.

He said this creates a very difficult situation for the principals who have to find replacements in the few days remaining before school opens.

Two science teachers have resigned, one at Morehead City and one at Smyrna; a band instructor at Beaufort, home economics instructor at W. S. King school and a first grade teacher at Smyrna.

W. B. Chalk, Morehead City, president of the Neuse Development association, summarized at the association's meeting Wednesday night the development advancements in Carteret during the past three months.

Mr. Chalk mentioned in his report the following:

1. Opening of Carteret Industries, Inc., at Newport. The firm employs 87 persons and peak employment will be 110. There are prospects, he said, of expanding the building within the next year.

"The western part of Carteret will benefit greatly by operation of this concern, and its situation should attract other industry to this area," Mr. Chalk said.

2. The new Morehead City Garment Co. building in Morehead City is 80 per cent completed. Mr. Chalk explained how the building was partially financed by local funds. "This is an example of local people unselfishly investing in an established industry for the purpose of strengthening the company, providing better working conditions for the employees and proving their faith in the future industrial development in Carteret county," Mr. Chalk said.

3. The new Russell's Marine Lift at Morehead City for raising craft up to 100 feet is the only one of its kind along the central eastern seaboard. Mr. Chalk said it "has been operated with much early success."

4. The tourist industry has been bolstered by complete and extensive fishing reports to all news media. The Sea Level-Atlantic-Ocracoke ferry represents an investment of several hundred thousand dollars. "This operation will encourage thousands of motorists to travel the scenic, daring and beautifully truly ocean highway," Mr. Chalk said.

The operation of the Emerald Isle ferry will add 15 more miles of outer banks highway to the present system. Mr. Chalk pointed out that through conventions and better travel conditions "we are constantly bringing new people to our area to see and use the benefits available for good living and industrial advantages."

5. Port and industrial development in the Neuse valley are synonymous, Mr. Chalk remarked. The port channel is being deepened to 35 feet, a system of range lights has been installed to permit nighttime navigation in the harbor. A second fumigation chamber for tobacco has been completed at the port.

The number of ships calling at Morehead City has steadily increased. More grain is being exported. Sixteen grain ships have called thus far in 1960.

Minimum needs for the port for the next two years require investment of \$5,420,000, Mr. Chalk pointed out. "The people of North Carolina must pass a bond issue for these improvements. This is anticipated to be passed with enthusiasm, since the public is quickly awakening to the economic benefit the ports can provide to North Carolina industry and agriculture . . ."

The president added that the people who have no selfish interest in port development feel that the closeness of the proposed bridge to the present center of port operation will deter expansion of the port of Morehead City.

He expressed the hope that a more favorable report on the port-bridge issue can be made at the November meeting.

Bids Opened On Warehouse

Bids were opened Wednesday afternoon at the state ports office, Morehead City, on a lumber warehouse to be built at the port.

The two lowest bidders were as follows: general contract, Miller Building, \$23,332 and Reagan Construction Co., \$24,000; electrical, Best Electric Co., \$2,255.60 and A. B. Blake, \$3,210; sprinkler, General Auto Sprinkler Co., \$5,571 and Kraly-Meares Corp., \$6,094.

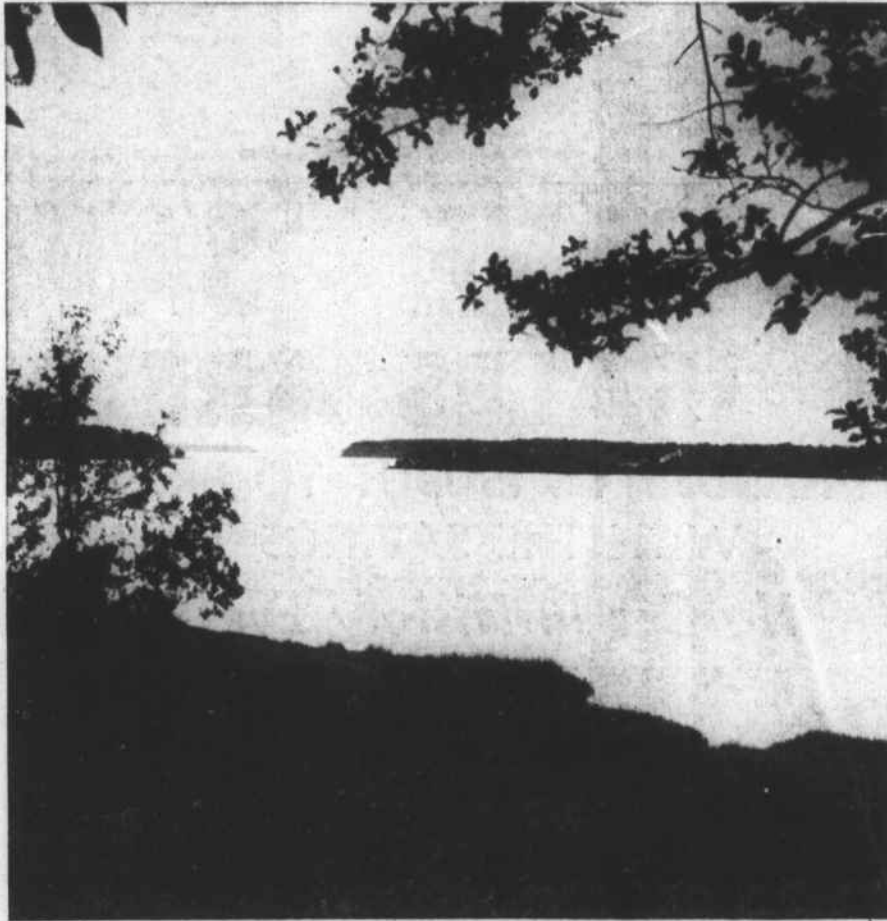
Quite a few bids were submitted. Date of awarding the contracts is indefinite, according to Charles McNeill, assistant port operations manager.

The warehouse will be leased to Continental Timbers, Morehead City, the rental payments over a period of years equalling the cost of construction.

Store Moves

The ABC store at Newport has moved into the building formerly occupied by the Newport postoffice. Operations at the new location, where there is more parking area, started Monday.

The Face of Western Carteret



Some of the most beautiful spots in the county are found east of the White Oak river in the Cedar Point area. This is a view from a 30-foot bluff above Pettiford creek, looking west to the point where the creek empties into the White Oak river.



W. T. Piner owns extensive acreage along Pettiford creek and is offering lots for sale. This is a view along the shore. He has dredged a canal system to give water access to lots not fronting on the creek.

New Bern Attorney Objects to State Plans for Bridge at Morehead City

Urging construction of a bridge at Morehead City to allow passage of ocean freighters is O. Meredith Smaw, New Bern, a transportation lawyer who appeared before the State Highway Commission when it met at New Bern Aug. 4.

Mr. Smaw, in his testimony before the commission said the need is critical "for modern, adequate, efficient port facilities at Morehead City, which facilities necessarily must allow for normal growth and expansion."

"Public port facilities invariably attract private maritime commerce . . . the land area now available in the Morehead City area for maritime industrial expansion is pitifully small and entirely inadequate . . ." the attorney pointed out.

Mr. Smaw cited Title 33 of the US Code Annotated, section 494, which states that no bridge can obstruct "free navigation of the waters over which it is constructed."

Mr. Smaw asks, "Could modern-day steamboats, or other watercraft of this Nuclear Age, navigate

the structure that is programmed as Project 8.12004 (Morehead City bridge across Newport river)? That is the question that must be affirmatively answered to meet the statutory test of Congress as enacted in Title 33 . . ."

Mr. Smaw says that the state cannot go contrary to Title 33 simply because there isn't, at present, water deep enough for deep draft vessels north of the present bridge. The ship channel must be deepened both north and south of the present bridge, in years to come.

Mr. Smaw says it is just as reasonable to expect water to be deepened north of the bridges as it is to expect it to be deepened, and channels maintained, south of the bridges.

To the highway commission, Mr. Smaw appealed, "I respectfully and diligently petition you not to build an obsolete and unlawful highway bridge over the Newport River in Carteret County between the towns of Beaufort and Morehead City.

"I . . . petition you to refrain from unreasonably obstructing navigation over the Newport river."

again . . . direct your attention to the language of Title 33; and I would remind you that that language is the Law of the United States."

The highway commission, at the hearing at which Mr. Smaw appeared, approved construction of a bridge closely paralleling the present highway bridge, with structural provisions for an ocean span, if and when such a span may be needed.

Rotarians Hear Talk On Catholicism Monday

Newport Rotarians heard a discussion on Catholicism Monday night by Bill Boyd who was presented by program chairman Ed Comer.

Guthrie Brown and David Murray, Morehead City Rotarians, attended the meeting as visitors.

License Reinstated

Thelbert George Gillikin, Beaufort, has been informed by the North Carolina Department of Motor Vehicles of the reinstatement of his driving privileges.



Douglas Ingram, avid booster of the Cedar Point area, envisions its picturesque land as sites for homes of retired persons. Here he is viewing land at Bayside Park, where the ferry to Emerald Isle will dock.

Judge Puts Arthur Lowe On Probation

Arthur Glover Lowe Tuesday was sentenced to a total of three years in jail and roadwork in county court Tuesday. Lowe was charged on three separate warrants with forcible trespass and larceny of less than \$100.

Judge Lambert R. Morris placed Lowe on probation for three years and fined him \$50 and court costs in suspending the jail term.

Most of the day's court action was taken up in the trying of defendants charged with speeding. Ordered to pay court costs for speeding were Elbert Leton Allgood, George Harvey Winslow Jr., Anita Pilger Reut, Samuel Clayton Garner, Hayes Bertram Stover Jr., Fairley Bryon Salter, Elmer O. Pendergraft and Donald Lee Bell.

Elvin Rudd and Claude Bryon Pipkin paid \$2 and court costs for exceeding the speed limit and James Curtis Arlege Jr., George Edward King, and Hubert C. Crow paid \$3 and costs.

Ordered to pay \$5 and court costs for speeding were Roy Lee Buchana, Donald Theodore Sessler, Ben Britt Russell, and Richard Allen Fields. Four other defendants, William Seeb Michael J. Burke, Earl Stanley Foster and T. D. Lewis, paid \$100 court costs on the same conviction.

William Lester Johnson, charged with speeding, requested a jury trial and his case was transferred to the next term of superior court. Bond for his appearance was set at \$100.

The court convicted James G. Exum of speeding and ordered him to pay court costs to which Exum noted an appeal to the next term of superior court. Bond for his appearance was set at \$25.

Other defendants, their charges and the findings of the court were as follows:

James E. McKenna—Improper passing, not prosecuted.

Elwyn Dwayne McFall—Having no operator's license and driving on the wrong side of the road. Not prosecuted on the license charge, ordered to pay court costs for driving on the wrong side of the road.

G. W. Gray—Issuing worthless checks. Three months in jail and roadwork suspended on payment of costs and the checks. An appeal by the defendant transfers the case to the next term of superior court. Bond set at \$300.

Leslie Eugene West—Having no operator's license, not prosecuted. Thomas Leonard Davis—Failing to yield the right of way, resulting in an accident, costs. Defendant entered an appeal, case transferred.

Tide Table

Tides at the Beaufort Bar

HIGH	Friday, Aug. 19	LOW
6:20 a.m.		12:16 a.m.
6:35 p.m.		12:23 p.m.
Saturday, Aug. 20		
7:02 a.m.		1:00 a.m.
7:15 p.m.		1:08 p.m.
Sunday, Aug. 21		
7:41 a.m.		1:42 a.m.
7:51 p.m.		1:50 p.m.
Monday, Aug. 22		
8:18 a.m.		2:21 a.m.
8:26 p.m.		2:30 p.m.
Tuesday, Aug. 23		
8:53 a.m.		2:57 a.m.
9:00 p.m.		3:07 p.m.

Formidable opposition to the State Highway Commission's proposal for location of the new bridge at Morehead City arose Wednesday night. The Neuse Development association went on record at Goldsboro objecting to the proposed bridge site because of "its detriment to port expansion."

The association, comprised of chambers of commerce of Goldsboro, Kinston, New Bern and Morehead City, appointed a committee which plans to meet with the highway commission and present alternate proposals.

The State Highway commission, at New Bern this month, voted to place the bridge a short distance north of the present railroad and highway bridges. This decision, according to state port promoters, will seriously hamper expansion of the port at Morehead City for the next 50 years.

They point out that the new bridge will not be in use until 1964 and by that time will be obsolete, due to rapid port expansion.

W. B. Chalk, Morehead City, president of the Neuse Development association, commented yesterday that it may be better to make repairs to the present highway bridge, even if those repairs cost as much as \$300,000, rather than invest millions in a bridge that will block port and industrial progress in eastern Carolina for the next generation and longer.

Mr. Chalk said, "We believe the present bridge can be used, with some repair, until a wiser decision can be made."

Appointed to the committee to confer with the highway commission are Don Deichmann, New Bern; Bill Page, Kinston, and John D. Lewis, Goldsboro. All are vice-presidents of the Neuse association. Mr. Chalk, as president, is also a member of the committee.

The group met at the Goldsboro Country club. Its next meeting will be the third Wednesday in November at New Bern. The association meets quarterly.

FBI Arrests Two Who Broke Into Stores

FBI agents Tuesday nabbed an ex-Marine from Cherry Point and a Morehead City youth in Valdosta, Ga., on a charge of transporting a stolen car across a state line. The pair, Wayne Barnes and Darrell Michaels, were wanted by the Morehead City police department for the recent robbery of Hill's men's store and the Morehead City drug store.

Before the two can be returned to Morehead City they will be tried in Florida on charges of robbing a hotel and car theft. Police chief Herbert Griffin said yesterday that the two stole a car in Jacksonville, Fla., after robbing a hotel there and fled across the state line into Georgia.

FBI agents in Florida said that Michaels and Barnes had in their possession at the time of their arrest merchandise that was stolen from Hill's.

Michaels at one time was stationed at Cherry Point while he was in the Marines and lately had been working at the port in Morehead City. Barnes, whose approximate age is 17, is from Morehead City.

Wind Shifts

The wind went around to the north Tuesday night and has brought cool weather to the county. Welcomed as the "mullet shift," the cool days mean mullet are schooling — good news for the fishermen.

JC's to Sponsor Driving Contest At 2 Wednesday

Morehead City Jaycees, in cooperation with the county driver-training school program, are sponsoring a safe driving Road-ee at 2 Wednesday afternoon at the Oceanana resort.

The contest is open to all persons who have not reached their 19th birthday before Aug. 11, 1961, are not married and have not had a moving traffic violation in the past six months.

The contest consists of a written quiz and a practical driving test. The winner of the local Road-ee will be eligible to compete in the state Road-ee and that winner will compete in the national contest.

The winners of the national contest will receive scholarships of \$2,000, \$1,500, and \$1,000.

The local Road-ee is co-sponsored by the following Beaufort and Morehead City insurance agents: J. P. Harris and Co., Duncan Insurance, S. A. Chalk, Jerry J. Willis, Chalk and Gibbs, and John L. Crump.

The safe driving Road-ee has two major goals, announces Joe Beam, chairman:

1. To give young motorists an opportunity to prove their driving ability and improve their driving habits, knowledge and attitudes.

2. To stimulate the interest of the community in the value of high school driving education courses. The contest is a Jaycee project in the field of traffic safety.

Anyone interested in participating in the Road-ee can get additional information by contacting either Joe Beam, Morehead City, or John Duncan, Beaufort.

Fire Destroys Potter Camp

The Wolf's Den, camp at Cedar Island belonging to the T. T. Potters of Beaufort, burned to the ground about 10:30 Wednesday morning. The fire is believed to have started during an electrical storm.

Mrs. Potter said yesterday that the loss, estimated at about \$10,000, was partly covered by insurance. She said they had not thought about rebuilding, but if they decided to do so, it would probably not be before next spring.

The Potters were in Wilmington Wednesday and did not learn of the fire until their return. Bill Brittingham, who lives near the camp, spotted smoke from the fire, but he and the caretaker were unable to control the blaze. The camp was a frame building.

Court to Consider Offers For Assets of Two Firms

A South Carolina company and a Durham businessman have offered to purchase assets of the bankrupt firm, Kirehofer and Arnold, and its affiliate, Morehead City Shipbuilding Corp., Morehead City.

The offers, which will be considered at a hearing in federal court in Raleigh Sept. 1, represent a fraction of the creditors' claims against the firms.

Claims against K&A for example, are almost \$3½ million. The South Carolina firm, InterAmerican Trust Co., has made an offer that amounts to \$450,000.

Its offer on Morehead Shipbuilding represents a price of \$120,000. InterAmerican has offered shares of its stock for the assets of the two firms. It stipulates that after a certain period of time, it will buy back its stock at \$3 per share. InterAmerican has also agreed to pay expenses, legal fees, etc. against K&A up to \$100,000, and up to \$25,000 on any such fees

against the shipbuilding corporation.

The Durham businessman, William E. Griffin, has offered \$110,000 cash for property of the Morehead City Shipbuilding firm. The price is based on machinery and equipment on the property at Morehead City, but does not include the marine railway and equipment connected with it.

The hearing on offers for the bankrupt firms will begin at 11 a.m. Sept. 1 before Judge Algernon Butler in the US eastern district courtroom, Raleigh.

Trustee in bankruptcy for K&A is H. F. Hofer, Durham. Several Carteret county residents are among the creditors of the bankrupt firms.

Federal charges are pending against principal officers of K&A, R. C. Kirehofer, president, who has been given a prison term by the state, and James W. Thompson, vice-president.