

# State Ports' Business Shows Large Increase in One Year

(Editor's Note: Recently expanded, North Carolina state ports already are overcrowded and approach a boom with record business activity. These figures and a glimpse into the future are presented in the last of a four-part series).

By FRED A. PARKER  
United Press International

Wilmington—After eight years of operation, North Carolina's state ports are in the black and on the edge of a boom.

Tonnage, revenue and number of ships set an all-time record for the first six months of this year. Additional warehouses not yet completed will catapult these figures still more by the end of the year. Still more facilities are needed.

"We finished our open wharf in January," state ports director D. Leon Williams told a group of visiting newsmen. "I had said before completion it would be overcrowded in 90 days. We had to turn away business in 30 days."

Comparative figures for the first six months of 1959 and 1960 showed this growth.

"The ports are self-sustaining insofar as operating expenses are concerned," comptroller Ruff De

Vane said. "We still have to have a state subsidy to maintain an operating margin. And, of course, capital improvements must come from state funds. Private enterprise is not interested in ports because of insufficient return on investments."

State support probably will have to continue indefinitely because of intense competition between states for additional industry and business based on port facilities. North Carolina's comparatively new ports are more than holding their own.

"I doubt if any port in the world is growing as fast as ours by comparison," Williams said. "Industry moving South will continue to provide expansion."

Williams does not, however, anticipate expansion to major world port status in the foreseeable future.

"I see great expansion in the next 10 years, but other ports are

## Morehead City

	1959	1960	Increase	Pct. Increase
Tonnage	211,887	288,577	76,690	36.2
Revenue	\$126,002	\$184,524	\$58,522	46.4
Ships	110	144	34	31.0
Wilmington				
Tonnage	117,881	171,995	54,114	45.9
Revenue	\$250,432	\$410,233	\$159,801	63.8
Ships	120	157	37	30.0
Combined				
Tonnage	329,768	460,572	130,804	39.7
Revenue	\$376,434	\$594,757	\$218,323	58.0
Ships	230	301	71	30.5

## Chalk Dust

### Betas Will Sell Barbecue To Raise Scholarship Fund

By GINNY LEWIS

The Beta club held its first meeting of this year last week. Their main discussion was how they could raise money for their scholarship fund.

Each year they loan \$250 to a worthy senior who is going to college. It was decided to have several barbecue suppers to raise this money because the one they had last year was so successful.

Last year's officers elected Sandra Whitehurst, their past president, FHA Queen. After the foot-

ball game, the FHA is sponsoring a dance. Everyone is invited.

Last week's game was a shock and a disappointment to some of us but we must all learn to take our losses with our wins. Our boys played well but they just weren't used to much opposition.

Tonight they will be ready for anything. I'm sure everyone will come out tonight to start them back on their winning streak.

This week's Miss Senior is Della Marie Conner, better known to all of us as "Josie." She was born

growing, too," he said. "Our basic responsibility is to serve industry and agriculture in the state. We could not continue to render the personalized service which is our strong point now if we grew to major proportions."

But the kind of growth vital to continued progress in the state's economy, from the mountains to the sea, was plainly visible in the activity at North Carolina's giant step forward, its state docks at Morehead City and Wilmington.

### Lawyer Tells Fib, Son Exposes With Question

Memphis (AP)—A busy lawyer strode into the waiting room at his office, trailed by his young son. Around the crowded room, heads lifted hopefully.

The counselor stopped at his secretary's desk and said, in ringing tones: "Afraid I'll have to be out in the county all afternoon, taking port status."

The patient waiters wilted. The lawyer marched sternly toward the door. At this point his son spoke up plaintively.

"Daddy," he asked, "does that mean we aren't going fishing after all?"

On May 18, 1942 to Mr. and Mrs. S. J. Conner of Harlowe. She is 5 feet 5 inches tall and weighs 124 pounds.

"I'm Sorry" is her favorite song and she likes to hear Brenda Lee and Fats Domino sing. Josie's pet peeve is a noisy school bus. Her memorable event is the Junior-Senior banquet.

While in school she has been a bus driver. After she finishes high school she plans to get a job.

Mr. Senior is Leaton Craig Dudley, son of Mr. and Mrs. Leaton Dudley. Craig was born on Aug. 8, 1942. He has brown hair and blue eyes and is 5 feet 11 inches tall and weighs 153 pounds.

"Blue Bird of Happiness" is his favorite song and his favorite singers are Fats Domino and Brenda Lee. In the food line he likes shrimp and fish. His pet peeve is anti-social girls and his hobby is cars.

Craig's memorable events are the last three state championships and the Junior-Senior banquets. He would like another memorable event in the Elwood hotel in High Point. While in school Craig has been in the Science club, 4-H club, and a school bus driver.

After high school he plans to continue his schooling in the Army.

## Eagle's Nest

### Seniors Elect Officers, College Day Observed

By MARY PHILLIPS

Hi Gang! This year I'll be writing your column for you. I'll try to do a good job, so I hope ya'll bear with me.

Since school began, the various clubs have been meeting. The Beta Club is making plans for the "tapping" ceremony for new members. Juniors, here's hoping your grades are up to par. The Tri-Hi-Y and Hi-Y are both as "busy as bees."

They have many wonderful projects and activities in store for us.

The seniors have elected, as officers for the class of '61, the following: president, Fred Willis; vice-president, Lynette McBride; secretary, Beth Mayo; treasurer, Patsy Nelson.

Monday, the seniors and juniors had "College Day." This is a day when representatives from various colleges come down to talk with us. Each person has a chance to

learn of the different colleges, and that way, decide which he wishes to attend. It really was helpful to me, and everyone concerned.

Miss Senior this week is none other than Sylvia Arlene Thompson. This lassie came into the world on Sept. 20, 1943, and is 17 years old. Her parents are Mr. and Mrs. E. B. Thompson, residing at 109 Evans St.

Sylvia is a very pretty girl with brown hair and brown eyes. She is 5 foot 6, and weighs 125 lb. Her favorites are: subject, conversational French; teacher, Mrs. Bailey; song, Halleluiah Chorus; singer, George Beverly Shea; food, anything but liver.

As hobbies she draws, and plays the piano. She is a very active member of the First Baptist church. While in high school, she

has been in the Student Council, Girl's State, Tri-Hi-Y, Beta Club, marshal, and chorus, just to mention a few.

Her plans for the future are to go into nurses' training.

Mr. Senior is one we all know. His name is Daniel Willis Wade II, or just plain "Dan." He happened along on May 5, 1943, and is 17 years old.

His parents are Mr. and Mrs. Earl K. Wade; his home is at 1003 Evans St. Dan has brown hair and blue eyes; weighs in at 162 lb., and stands 5'11" tall.

His favorites are: subject, physics; teacher, Mrs. Bailey; song, "I'm Going to Sit Right Down and Write Myself a Letter"; singer, Tennessee Ernie Ford; food, banana pudding and plenty of it.

As his hobbies, Dan says that he

sleeps and plays basketball. He is a member of the First Methodist church. While in school, Dan has participated in basketball, Beta club, Hi-Y, Chorus, Boy's State, baseball, and the Monogram club.

He is undecided as to what his future will be.

Do you know... What freshman a certain J. B. is seeing a lot of lately?

Who got into a "food fight" in the drug store Friday afternoon?

What two boys called people up all Sunday afternoon, playing tricks on them?

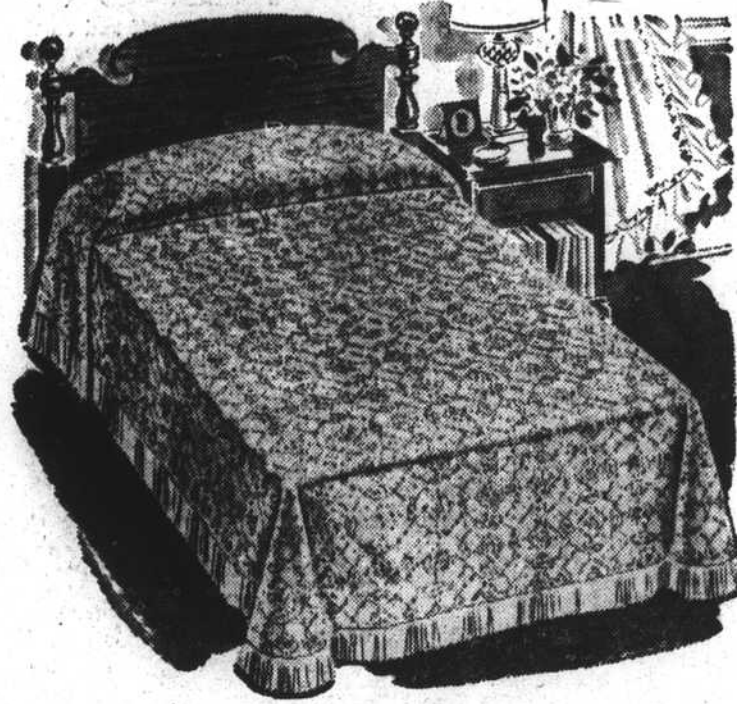
What happens to Mrs. Bailey's voice when she's been our "sounding board" too much?

What happened to Jacquie Roberts' little toe?  
Thought: "If God be for us, who can be against us?"

THURSDAY — FRIDAY — SATURDAY

# Belk's Dollar Days

TREMENDOUS SAVINGS DON'T WAIT! HURRY!

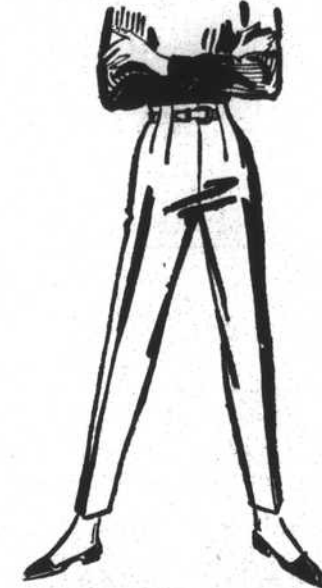


many values usually \$8.95

### CLOSEOUT! FIRST QUALITY BEDSPREADS

Woven blazer stripes! Multi-colored floral chenilles, wedding ring motifs. Luxurious tufted designs! All first quality, one or two of a kind! Come early for best choice. Twin, full.

\$5.00



IMPORTED ITALIAN FLANNEL SLIM JIMS

\$5.00

Choice: charcoal, medium gray. Wool and nylon blend. Tapered legs, tunnel-loop belt. 10-18.



BROADCLOTHS, CHECKS! MISSES' COTTON BLOUSES

Sizes 32 - 38

\$1.00

Styles galore: emblem-tab fronts, button-down collars, roll-up sleeves! White, colors.



DAINTY SHEER SWISS EMBROIDERED HANKIES

2 for \$1.00

Values to 59c each! Lace trims, scalloped hems! Dainty flowers, sprays, all-over designs! Come see!



GOLD-THREAD INITIAL! HOLD-EVERYTHING CLUTCH

\$1.00

Plus Federal Tax



EASY-CARE CORDUROY FULL-SKIRTED JUMPER

7 to 14

\$3.00



BROADCLOTH BLOUSES PRETTY COLLARS, TRIMS

7 to 14

\$1.00



NEW FALL DARKTONE CREASE-RESISTANT COTTONS

2 Yards \$1.00

PLASTIC LAUNDRY BASKET

\$1.00

IMPERIAL TOILET TISSUE

10 Rolls \$1.00

ELECTRIC BLANKET

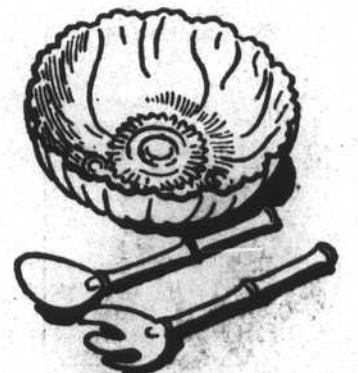
Double Red — Single Control. 2-Year Guarantee

\$10.00

INDIANHEAD

(Seconds)

2 Yards \$1.00



CRYSTAL-CLEAR GLASS SALAD BOWL, PLUS SERVERS

\$1.00

LONG-SEASON FASHION COTTONS BY THE YARD

3 Yards \$1.00

Wash and wear! Paisleys, neat geometrics, heraldic motifs! For school togs, separates! 35 - 36.

### Easy Living Within Easy Reach!



### Enjoy the convenience of a Kitchen Extension Phone

Telephone to your heart's content and all the while keep an eye on that scrumptious new recipe you're trying. Order your kitchen extension now... from the telephone business office.



Extensions in your choice of several beautiful colors



Carolina Telephone