

# Committee Presents Information on New Hospital Proposal

(Note: Following is information on the proposed hospital bond issue being distributed by a committee formed to promote building and operation of a county hospital).

All citizens of Carteret County will have the opportunity to express their opinions at the polls on Nov. 8. It is the duty and privilege of each citizen to give prayerful thought and consideration to the following issue.

- Do we need a new hospital in Carteret County?
- If so, can we afford it?
- If not, can we afford to allow the present Morehead City Hospital to close in a few years and have no hospital for the majority of the people in the County?

It is just that simple and plain and can be thoroughly understood if all the following facts are known. Why a New Hospital is Needed

The present hospital serves the major portion of the county, is located in Morehead City and operated by a board of trustees. Half of the building is over 45 years old and the entire structure represents a patchwork of additions and alterations which have been added with no correlated planning so that nearly every department is located in a disadvantageous position.

This makes for great waste of nursing attention and all other services rendered to patients. The hospital is very expensive to maintain since it is an old structure and is in constant need of repairs.

Carteret County's population is growing rapidly. Most people today have hospitalization insurance and use hospitals much more than they did 15 to 25 years ago. While the present hospital is located in Morehead City and has been operated by the city, in 1959 seventy-one per cent of the patients who were treated in the Morehead City Hospital were from outside the Morehead City limits.

Crowded conditions prevail at all times and it is not uncommon to see patients being cared for in the halls, in the waiting rooms, and in the different parts of the hospital which were not intended for patient care.

The Medical Care Commission is composed of a group of leading business and professional men throughout the State of North Carolina. The commission was created by an act of the legislature and among other duties it is primarily concerned with the recognition of the need for new hospitals in the State and is empowered to help in the arrangement for the setting up of these hospitals by allocation of Federal and State funds.

It has recognized that the need for a new hospital in Carteret county is urgent and has approved a liberal allowance from the federal government in the form of Hill-Burton funds and also has approved an allowance of over \$100,000 of State funds.

The commission has authorized participation in a 100-bed hospital for this County which will cost approximately \$1,700,000, but the financial part which will be required to be furnished by Carteret county is between \$600,000 and \$700,000.

This means that Carteret county will get a great bargain for its money that is spent. The Medical Care Commission puts no strings on the funds which it allocated except to see that the standards of construction are up to State requirements.

The Medical Care commission has considered this project carefully and approved it. This means that they are convinced that it is a very worthwhile need for our community. Since 1948 the Medical Care commission has approved and there have been constructed in North Carolina over fifty similar hospitals and public health buildings.

None of these have had to close its door because of financial difficulties in operation, and there is no reason for the county commissioners or anyone else to fear that a modern up-to-date hospital in this community will not be able to operate without being

equipment and facilities which are present in new hospitals will be available in this new plant.

Conclusion

It should be emphasized once more that this is an urgent problem. If the Morehead City hospital has to close because the building is condemned, it must be realized that hospital operations cannot be carried on in the civic center, in churches, or in any other public place except a hospital building.

Time is of the greatest importance and we must realize that we are faced with this possibility in the very near future. We should take steps now to eliminate the situation whereby the majority of the people in this county would have no hospital facilities at all.

It should also be pointed out that the new hospital will be open to all people in the county including summer guests and will be available without regard to race, creed or color.

Therefore, all churches, all civic clubs and civic leaders, all officials of county and local government, and everyone else who feels that the health needs of our county must be met with new hospital facilities should take upon themselves the task of advising all of their friends and neighbors of the importance of going to the polls on Nov. 8 and voting for this bond issue.

It has nothing to do with politicians and politics as both Democrats and Republicans or any other party members will be welcome just as they are today in the present hospital facilities. Carteret county cannot afford to go backward, and it would be a tragic mistake and a tremendous step backwards if the bond issue is not passed in November.

For those who are not willing to believe that the urgent need exists because he or she happens to be in good health at the present time, these should remember that at any moment any of us or our families may find that the hospital is the last resort in saving the lives of our loved ones and lack of modern hospital facilities or the absence of any hospital facilities whatsoever may hit home with tremendous impact at the most unsuspected moment. It happens every day.

Don't let your fear of a slight increase of the tax rate in the county prevent you from doing your part in making available for your family and your fellow citizens the thoroughly demonstrated need for new hospital facilities which will be available if this bond issue is passed.

Improved waiting room facilities will be available on each floor. In addition, family rooms will be available for the families of desperately ill patients or in the case of bereavement, the emotionally upset family and friends of the deceased will have a place where they can remain and talk over the arrangements in privacy. This need has long existed in the present facilities.

A new modern laboratory with latest equipment including the expensive apparatus for complicated chemical examinations and a blood bank of the latest type will be included.

Modern kitchen and cafeteria facilities for the patients and staff with modern methods for proper handling and transportation of food while it still hot will be included in a new hospital.

There will be a new obstetrical department with new delivery rooms and a modern nursery with all the equipment which will be required. This means the obstetrical patients can have the most up-to-date care. A remarkable job has been done with facilities which are old and out-dated and this one addition alone would make a new hospital worthwhile.

A completely new surgical department with adjacent x-ray facilities, adequate supply rooms, modern sterilizing equipment and emergency lighting will mean better care for the patients. In addition, recovery rooms will be close by the operating rooms and in these one nurse will be able to care for several patients immediately following operations until the patients are able to return to their own rooms. This means better care all the way around for the surgical patients.

Other facilities such as new administrative offices and business office, medical library, record room, drug and supply storage, new elevators and countless other

equipment and facilities which are present in new hospitals will be available in this new plant.

Conclusion

It should be emphasized once more that this is an urgent problem. If the Morehead City hospital has to close because the building is condemned, it must be realized that hospital operations cannot be carried on in the civic center, in churches, or in any other public place except a hospital building.

Time is of the greatest importance and we must realize that we are faced with this possibility in the very near future. We should take steps now to eliminate the situation whereby the majority of the people in this county would have no hospital facilities at all.

It should also be pointed out that the new hospital will be open to all people in the county including summer guests and will be available without regard to race, creed or color.

Therefore, all churches, all civic clubs and civic leaders, all officials of county and local government, and everyone else who feels that the health needs of our county must be met with new hospital facilities should take upon themselves the task of advising all of their friends and neighbors of the importance of going to the polls on Nov. 8 and voting for this bond issue.

It has nothing to do with politicians and politics as both Democrats and Republicans or any other party members will be welcome just as they are today in the present hospital facilities. Carteret county cannot afford to go backward, and it would be a tragic mistake and a tremendous step backwards if the bond issue is not passed in November.

For those who are not willing to believe that the urgent need exists because he or she happens to be in good health at the present time, these should remember that at any moment any of us or our families may find that the hospital is the last resort in saving the lives of our loved ones and lack of modern hospital facilities or the absence of any hospital facilities whatsoever may hit home with tremendous impact at the most unsuspected moment. It happens every day.

Don't let your fear of a slight increase of the tax rate in the county prevent you from doing your part in making available for your family and your fellow citizens the thoroughly demonstrated need for new hospital facilities which will be available if this bond issue is passed.

Improved waiting room facilities will be available on each floor. In addition, family rooms will be available for the families of desperately ill patients or in the case of bereavement, the emotionally upset family and friends of the deceased will have a place where they can remain and talk over the arrangements in privacy. This need has long existed in the present facilities.

A new modern laboratory with latest equipment including the expensive apparatus for complicated chemical examinations and a blood bank of the latest type will be included.

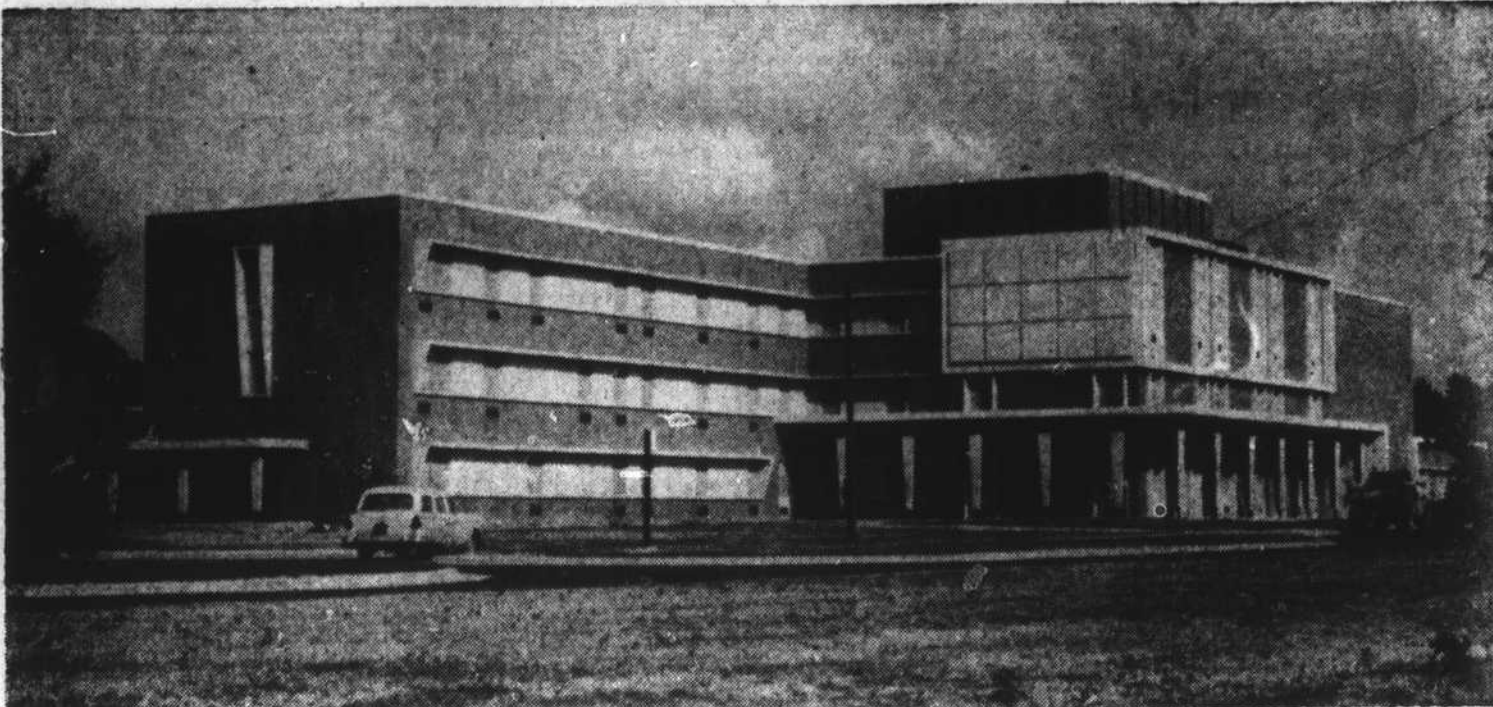
Modern kitchen and cafeteria facilities for the patients and staff with modern methods for proper handling and transportation of food while it still hot will be included in a new hospital.

There will be a new obstetrical department with new delivery rooms and a modern nursery with all the equipment which will be required. This means the obstetrical patients can have the most up-to-date care. A remarkable job has been done with facilities which are old and out-dated and this one addition alone would make a new hospital worthwhile.

A completely new surgical department with adjacent x-ray facilities, adequate supply rooms, modern sterilizing equipment and emergency lighting will mean better care for the patients. In addition, recovery rooms will be close by the operating rooms and in these one nurse will be able to care for several patients immediately following operations until the patients are able to return to their own rooms. This means better care all the way around for the surgical patients.

Other facilities such as new administrative offices and business office, medical library, record room, drug and supply storage, new elevators and countless other

## Picture This in Carteret County



This is Edgcombe General hospital, Tarboro, built with state, federal and local funds under the supervision of the Medical Care commission, same state agency which has put Carteret high on the state's priority list for new hospitals. The hospital will accommodate 75 patients. Edgcombe county levies a 5-cent tax for hospital operation, which the hospital trustees say they have not had to use thus far.



Oct. 4—Mr. and Mrs. Bertram Daniels and children, Johnnie and Phyllis and Mrs. Daniels' father, Mr. Philip Teenberg, spent Sunday at Cedar Island.

Mrs. Susan Day, who spent last week with Mrs. Sophia Lupton, returned to her home at Morehead City Saturday.

Mr. and Mrs. Donald Gilgo of Atlantic were in the community a short while Sunday.

Mr. and Mrs. Monroe Simpson, Mr. and Mrs. Jimmie Lupton and son, James, visited Mr. Walter Godwin at Cedar Island Sunday.

Mr. and Mrs. James Willis attended church services at Atlantic Sunday.

Mr. and Mrs. Harry Willis visited relatives at Cedar Island the past weekend.

Mrs. Ida Willis of Beaufort visited relatives in the community Sunday.

Mrs. Julia Pake and daughter, Mrs. Dallas Willis, visited Mrs. Eva Willis and Mrs. Lucy Gillikin at Morehead City Sunday afternoon.

Mr. and Mrs. Allen Lupton, New Bern RFD, who returned last week from Cameron, La., where they spent the summer, visited his mother, Mrs. Sophia Lupton, Sunday.

Mr. Walter Goodwin of Beaufort visited relatives here Saturday.

Mrs. Herman Reid and two sons of Beaufort visited friends Sunday afternoon.

Mrs. Donald Gilgo of Atlantic was in our community a short while Sunday evening.

Mrs. Ollie Bell of Coral Bay visited her son and family Monday morning.

Mr. and Mrs. William Jordan and family of Goldsboro visited her mother, Mrs. Ella Buchannon, through the weekend.

Mr. and Mrs. Frank McIntosh and daughter, Eleanor, visited his father, Mr. and Mrs. Fernie McIntosh, at Marshallberg last week.

Mrs. William Willis, Beaufort, and guest, Mrs. William Bailey of Cocoa, Fla., visited Mrs. Julia Pake and family last Tuesday.

## 'Take a Look at the Facts'

A colorful leaflet, 'Take a Look at the Facts', throws another light on the proposal for a county hospital. The message on the leaflet follows:

**WHAT WILL A NEW HOSPITAL MEAN TO YOU?**

It is a haven of refuge for the sick, injured and crippled in mind and body.

It is a modern, scientifically equipped, clean, air-conditioned, restful, quiet, efficient and friendly harbor where you can go for protection, rehabilitation and salvation in your time of medical need.

It is second to no institution in its relationship to God. More prayers are said in a hospital than in a church, for the need for spiritual guidance is constant in a hospital 24 hours a day, the entire year, for patients, nurses and doctors.

It means that when you, your wife or husband or your children are critically ill or injured, you have a place nearby where you can turn for help. If we lose our hospital facilities in Morehead City, as the Medical Care Commission has indicated we soon will do, it will be necessary to go 35 miles or more for all hospital needs.

It means you will have as nice and up-to-date hospital as there is in the State. If you do not know what it will be like, go to Tarboro, Washington (N.C.) or Elizabeth City and see what they have done. If you see one of these new hospitals, you will agree that this is the opportunity of the century for Carteret County.

**WHAT WILL A NEW HOSPITAL MEAN TO CARTERET COUNTY?**

A new hospital is a \$1,700,000 industry operating 365 days a year, 3 shifts a day, employing 80 to 100 people with a monthly payroll of \$15,000 to \$20,000—a yearly payroll of \$180,000 to \$225,000. In addition, approximately \$200,000 is expended annually for food, supplies, drugs and other necessities. Most of this is spent in Carteret County.

It means that major industry, tourists and conventions will find this County more attractive because of adequate health facilities.

It will indicate to ourselves and our visitors that Carteret County is progressive, optimistic, and vitally concerned for the health, welfare and medical needs of its citizens. It will indicate that we are not satisfied with out-moded and obsolete hospital facilities.

The French village of St. Bertrand-in-the-Pyrenees (population 350) once was the capital of a Roman province and had a population of 60,000.

## Flood Control Project Begun

Srinagar, Kashmir (AP)—Kashmir is buying dredgers from the United States and shovels from Britain to keep the valley free from floods.

Two dredgers are scheduled to arrive here in early 1961, each with a dredging capacity of 750 cubic feet per hour.

These are part of a state plan to widen and deepen the 19-mile long Outfall Channel of the valley's main river, the Jhelum.

The first phase of the plan is scheduled to cost 80,000,000 rupees (\$16,800,000).

## Weight Reducer

Dillwyn, Va. (AP)—J. H. Jamerson, who weighs 210, rode his bicycle 65 miles to Richmond — to reduce, he said. He came back by automobile. Net loss for the 69-year-old man was one pound.

# Chrysler '61

Others in Chrysler's price class are building Jr. editions for '61. Not Chrysler! Why? Because Chrysler's reputation has always been based on full-size, full-value cars. Result: your investment in a Chrysler will not be compromised by lesser cars bearing the Chrysler name.



This is the Newport 2-door Hardtop Sedan

## featuring the new Newport! ... a full-size Chrysler in a new, lower price range!

It's new! And it's a beauty! It's Newport... the big car that's every inch a Chrysler. Come see what you get for the Newport's new, lower price | Unibody, a single unit that's 100% stronger than old-type body-and-frame construction. A new Firebolt V-8 engine that runs on regular gasoline. Five-foot-wide seats... plus a driver's seat built to support you from shoulder to knee. A brand-new alternator that gives your battery longer life. And unexcelled torsion-bar handling | The Newport! Full-size proof that Chrysler can't be beat for value. Ask your dealer. He's waiting with a key and the widest smile in town!

CHRYSLER '61: NEWPORT \* WINDSOR \* NEW YORKER \* 300/G

LEWIS MOTORS • Craven Street, Beaufort

**NATIONAL**  
AIRLINE OF THE STARS

**WASHINGTON**  
\$17.65  
ADD TAX

NEW YORK • NORFOLK • PHILADELPHIA  
JACKSONVILLE • CHARLESTON, S.C. • DAYTONA BEACH

Call your Travel Agent or MEIrose 7-5151

FIRST WITH JETS IN THE U.S.A.