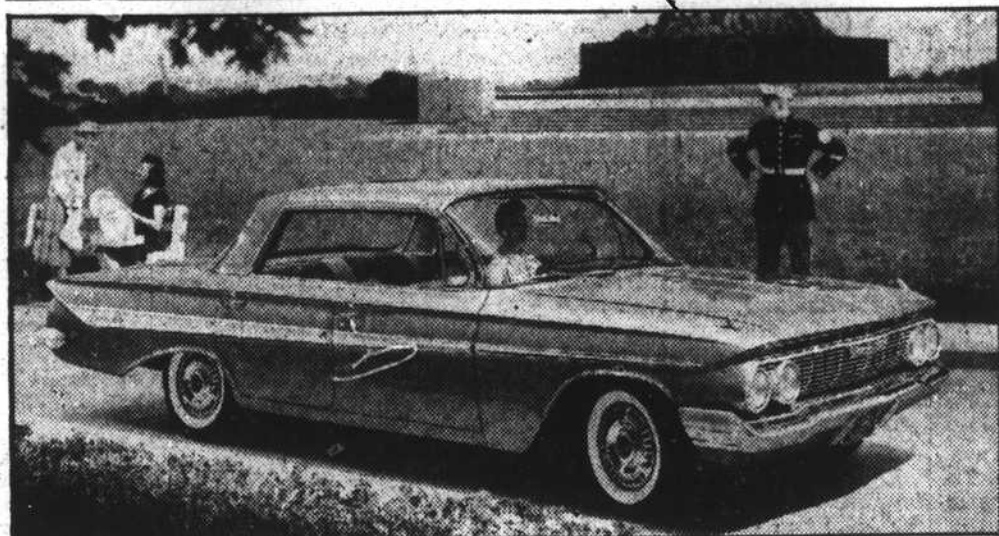


THE GREATEST SHOW ON WORTH!

Chevrolet, Oldsmobile & Pontiac

Sleek Impala One of 20 New Chevrolets



Designers have applied smooth, graceful lines to the '61 Chevrolet Impala, Bel Air and Biscayne passenger car lines. Wings on the rear deck have been smoothed into the body. Roof lines, as noted in the Impala Sport Sedan (above) are freshly contoured and are separately styled for each model. Overall body design features gently sloping lines. Rear trunk deck lid now opens flush with top of bumper affording easier loading and unloading. Fuel tank has been repositioned for greater safety. The Impala Sport Sedan is one of 20 body styles in the standard Chevrolet line.

Chevy adds Corvair Station Wagon



Chevrolet stylists adroitly meshed the requirements of a roomy and versatile vehicle with the crisp, smart design of the Corvair line and came up with this sparkling new Corvair Lakewood Station Wagon. The car with its air-cooled engine in the rear, folding seat and forward luggage compartment is readily adaptable to almost any job... commercial or pleasure. In addition to the Lakewood, Chevrolet added a sports wagon and three half-ton trucks to the Corvair line for '61.

Versatility aplenty in 1961 Corvair Greenbrier Sports Wagon



Chevrolet will raise the lid on a real surprise package when they reveal the 1961 Greenbrier Sports Wagon. A promising addition to the Corvair line is this 85-inch wheelbase vehicle with rear-installed engine and independent suspension. The Greenbrier is certain to fit transportation needs from backwoods camps to swank hotels. Seats may be repositioned to fit specialized requirements. There also is a commercial counterpart—a delivery vehicle named the Corvan.



MOST POPULAR PONTIAC BODY STYLE, the rakish four-door Vista hardtop, is more beautiful than ever in the new 1961 Bonneville series. Curving windshield pillars, a slim line roof, and crisply defined side windows create a new custom appeal. Distinctive Bonneville features include the high performing Trophy V-8 engine with four barrel carburetor and luxurious upholstery of patterned cloths and Jeweltone Morrokide. The exciting Vista also is available in the Star Chief, Ventura, and Catalina series.

ALL SHOWING TODAY

ALSO
COMPLETE LINE
OF
NEW TRUCKS

FOLLOW
THE
CROWD
AND
SEE
THE
FINEST
GROUP
OF
CARS
EVER
ASSEMBLED
AT



Oldsmobile's all-new and distinctive styling motif for 1961 is exemplified by this Super 88 Holiday Sedan, a four-door hardtop (upper photo), and the Dynamic 88 Holiday Coupe. The new body lines give the cars a long, sleek look, but overall length of the 88's has been reduced 3 inches. The Super 88 is powered by the high performing 325-horsepower Skyrocket engine. Standard engine for Dynamic models is the 250-horsepower Rocket engine, designed to operate on lower cost regular-grade gasoline. All 1961 Oldsmobiles are available in a full range of 15 exterior colors, including nine metallic finishes. Interiors are the most attractive in Oldsmobile's history, with bright new fabrics color-harmonized with the exterior finishes.



Entering the low-price field this fall is the all-new, smaller Oldsmobile, the F-85. This smartly styled new six-passenger car is built on a wheelbase of 112 inches, with over-all length of 188.2 inches. The F-85 is offered as a four-door sedan or four-door station wagon, with deluxe versions of each (shown above). Sedans have a generous 12.1 cubic feet of usable luggage space, while cargo space in the station wagons is 73.5 cubic feet. The high performing, economical F-85 is powered by Oldsmobile's all-new aluminum Rockette V-8, a water-cooled engine mounted up front. Rated at 155 h.p., the 350-pound Rockette V-8 engine has one of the highest power-to-weight ratios in the industry and is engineered to perform efficiently on regular-grade gasoline. Luggage rack shown above on the deluxe station wagon is optional at extra cost.

Sound Chevrolet Co., Inc.

1308 ARENDELL ST.

MOREHEAD CITY