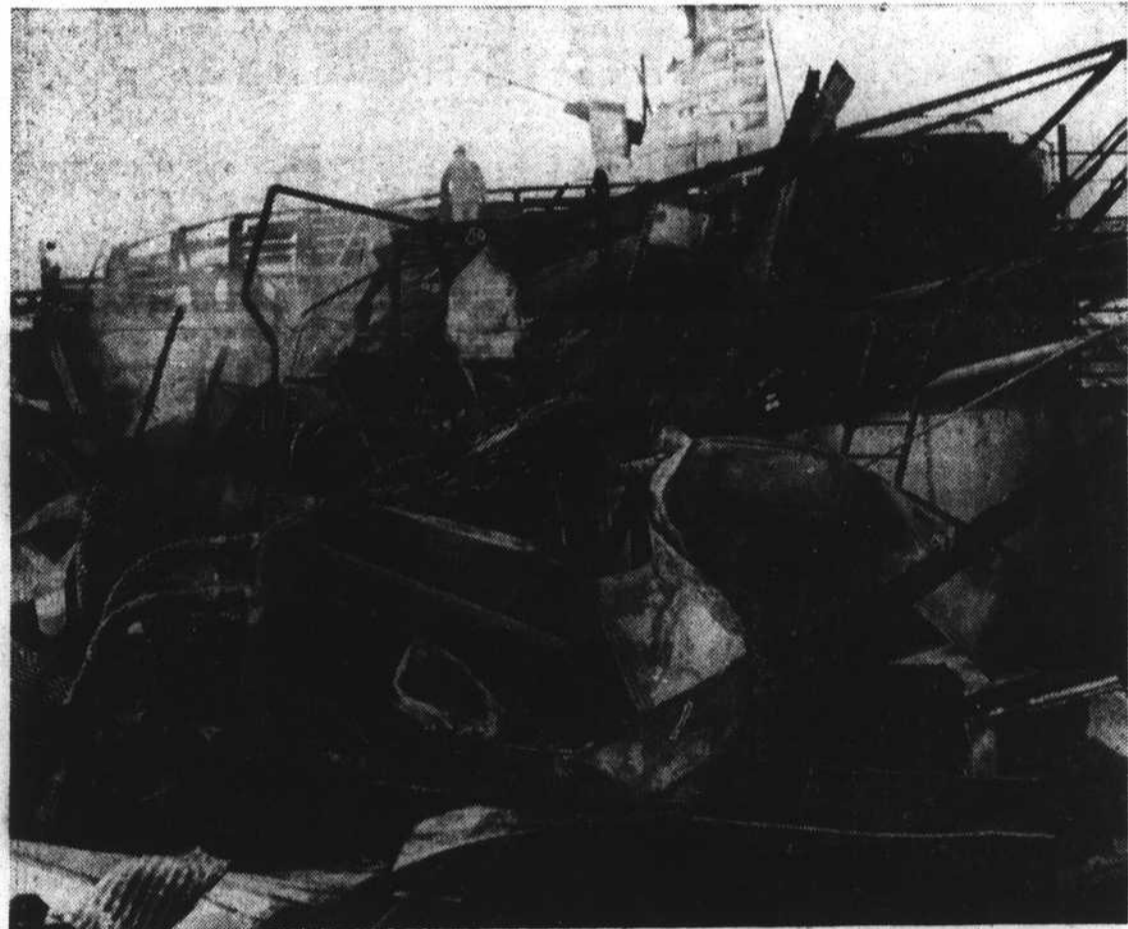


Fire Levels Beaufort Menhaden Plant



News-Times Photos by McComb

Firemen aim streams of saltwater, from Taylor's creek, on the Standard Products Co. fish factory at Beaufort. The fire broke out at 9:45 p.m. Friday.



Desolation the morning after. What was once machinery in a menhaden processing plant is twisted, charred metal.

Group to Discuss Ferry Operation

Heads of civic clubs, leaders in communities down east, representatives of the Neuse Development association, the greater Morehead City chamber of commerce, and others will meet at 10 a.m. today in the Morehead City municipal building to draft a plan for operation next season of the ferry between Ocracoke and Atlantic.

The plan for the meeting was proposed by mayor W. H. Potter, Beaufort, in cooperation with mayor George Dill, Morehead City. Mayor Potter said that a delegation from this county has an appointment at 10:30 a.m. Wednesday with Mel Broughton Jr., chairman of the State Highway commission, to put before him their proposal.

The State Highway commission last week rejected a recommendation by two highway commissioners that the state buy and operate the ferry that operated this past season.

Mayor Potter said it is hoped that the state may be interested in a lease-purchase agreement. He said Army engineers would also be contacted relative to restoring channels filled in during Donna. The mayor is of the opinion that ferry toll charges could be continued.

Among those invited to the meeting today are Norwood Young, Rufus Butler Jr., Rep. D. G. Bell, Sen. Luther Hamilton, Moses Howard, W. B. Chalk, D. Mason, Clayton Fulcher, Garland Scruggs, J. O. Barbour Jr., James H. Potter, all of this county, and Ralph Morris, New Bern, state highway commissioner. Persons who may have suggestions on resumption of ferry service, or others interested, are invited.



And the sun shall be obscured at noon-day . . . Smoke from the smoldering heaps of fish scrap makes the sun a dull yellow disc in sky Saturday morning.

Firemen Set Santa Claus Treat for Dec. 22

Morehead City firemen announce that Santa Claus will ride one of the fire trucks and toss fruit to the children Thursday night, Dec. 22.

The truck will leave the section base at 6 p.m., go east on Arendell to 4th street and then west again on Arendell to the section base.

Farmers Vote Today

Cotton farmers will vote today at Gaskill's feed store, Beaufort, on whether to continue cotton marketing quotas. Voting will start at 8 a.m. and end at 6 p.m. B. J. May, county ASC manager, reports that there are only several farmers in the county who are eligible to vote. Acreage allotments for the 1961 cotton crop have already been mailed to farmers.

A blaze that firemen report started in the scrap drier destroyed the Standard Products Co. plant at Lennoxville, Beaufort, Friday night.

Fire trucks from Morehead City and Atlantic Beach answered a call for assistance. Two Coast Guard boats from Fort Macon pumped water on the flames from Taylor's creek, and a fire party from the Coast Guard cutter Chilula was also on the scene.

The fire was reportedly discovered by Colon Bowser, employee who operates the drier. He and others tried to put the fire out with fire extinguishers, but were unsuccessful. Meanwhile, Beaufort firemen had been summoned.

Elmond Rhue, fire department engineer, said flames were breaking through the roof as he neared the factory with the truck. Firemen said that piles of scrap prevented their getting to the source of the flames.

Firemen were on the scene until after midnight and were called back twice Saturday morning when flames from the still smoldering wreckage started going toward machinery that had been saved and placed on the dock by Taylor's creek.

The office building and dining hall for employees did not burn. H. R. Humphreys Jr., owner, said that much of the scrap processed this season was in the plant. Eight boats, fishing for Standard Products last week, have stopped operations.

Mr. Humphreys would not estimate his loss. The factory was located on the same site as the Lambert Morris menhaden factory which burned some years ago. The Standard Products plant was built in 1956.

Driver Cited After Accident

Raymond H. Guthrie, a Salter Path driver who demolished his own car and did considerable damage to another Sunday afternoon, has been charged with careless and reckless driving.

Police said that Guthrie was going east on Bridges Street near the Curve Inn when his car, a 1955 Chevrolet, hit the shoulder, skidded and turned over, rolling into a parked auto.

The owner of the parked car was Julius A. Nelson Sr. of Morehead City. Damage to Nelson's car, a 1959 Plymouth, was estimated at \$150.

Patrolman E. D. O'Neal of the Morehead City police department investigated.

Tide Table

Tides at the Beaufort Bar

HIGH	Tuesday, Dec. 13	LOW
3:23 a.m.	10:10 a.m.	
3:32 p.m.	10:21 p.m.	
Wednesday, Dec. 14		
4:21 a.m.	11:02 a.m.	
4:37 p.m.	11:09 p.m.	
Thursday, Dec. 15		
5:16 a.m.	11:53 a.m.	
5:38 p.m.	11:58 p.m.	
Friday, Dec. 16		
5:09 a.m.	12:43 a.m.	
6:32 p.m.		



From a distance, the burning plant was a red inferno. Spectators and their cars hampered fire trucks. Some firemen had to walk more than a block to get to the fire.



Two firemen, silhouetted against the searing flames, direct water on corrugated tin, which was collapsing under the heat. Some tin, propelled by explosions, would sail—red hot—through the air.

Final Figure Sets County Population Figure at 30,940

During the 10 years from 1950 to 1960 Carteret county's population increased slightly more than 34 per cent, from 23,059 to 30,940, according to final reports from the 1960 Census of Population received yesterday by THE NEWS-TIMES. The figures supercede the earlier-published preliminary figures.

Of the county's incorporated towns only Beaufort lost population during the 10-year period while Morehead City, Newport and Atlantic Beach gained.

An indication of the increasing population of the county is that the 1960 census breaks the county's "count areas" into 25 divisions; the 1950 census, only 16 divisions. Official 1950 and 1960 breakdown of census figures for Carteret:

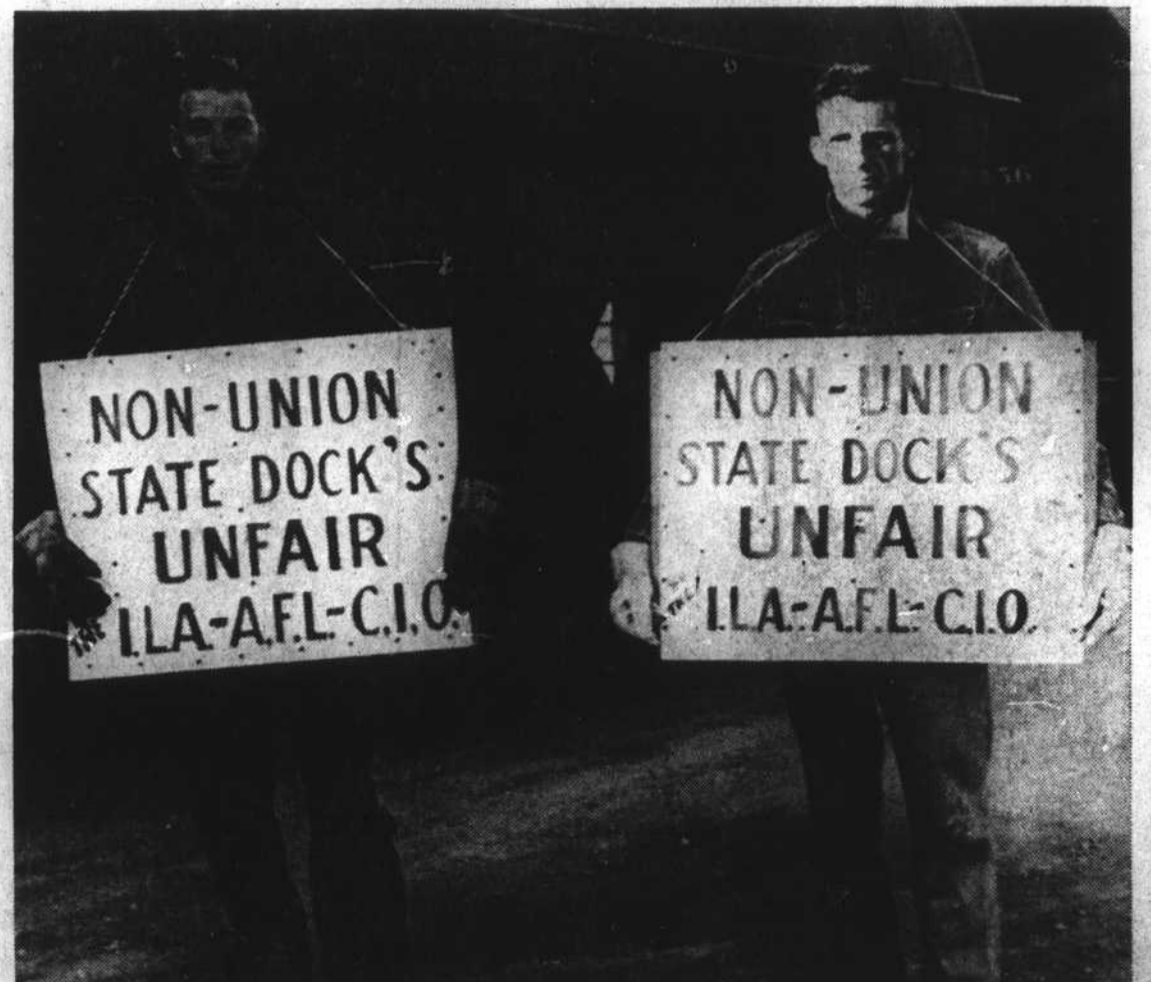
	1950	1960
Atlantic Twp.	902	902
Atlantic Town	844	844
Beaufort Twp.	5,374	6,246
Beaufort Town	3,212	2,922
Cedar Isle Twp.	290	255
Davis Twp.	446	446
Hunting Qtr. Twp.	1,519	1,519
Harkers Island	1,244	1,362
Harlowe Twp.	629	629
Marshallberg Twp.	416	416
Merrimon Twp.	374	344
Morehead Twp.	8,299	13,556
Atlantic Beach	49	76
Morehead City	5,144	5,583
Newport Twp.	2,259	2,644
Newport Town	676	861
Portsmouth Twp.	33	8
Sea Level Twp.	389	389
Smyrna Twp.	1,387	597
Stacy Twp.	291	291
Straits Twp.	2,251	1,070
White Oak Twp.	1,273	1,785
Bayshore Park	21	21
Cape Carteret	52	52
Emerald Isle	14	14

It will be noted above that the designation Hunting Quarters township (the area around Atlantic) was not used in the 1960 census. Instead, separate population figures have been given for communities in that area, Sea Level, Stacy and Atlantic.

Incorporated towns in the county are Beaufort, Atlantic Beach, Morehead City, Newport, Bayshore Park, Cape Carteret and Emerald Isle.

(Note: The newspaper office frequently gets calls requesting census information. If you think you may be interested in these figures any time in the future, please clip this news story and keep it for reference.)

Men Picket State Docks



Larry Arnold, left, and Nolan Schrader paced back and forth in front of the east entrance to the Morehead City state port Friday. They told a reporter that "longshoremen" were on strike. Vernon Guthrie, officer in the Morehead City unit of International Longshoremen, claimed longshoremen were not on strike and he didn't know who was doing the picketing.

Court Order Dissolves Picket Line at Port

- Longshoremen Load Ship Saturday A.M.
- Hearing Set Dec. 23 At Greenville

A court order removed a picket line at 5:30 p.m. Friday at the state port, Morehead City. It also orders Leroy Guthrie, president of the Morehead City longshoremen's union to appear before resident judge W. J. Bundy at noon Friday, Dec. 23, at the courthouse, Greenville.

The order was obtained by the North Carolina State Ports Authority when longshoremen refused to cross the picket line, consisting of two men, and load tobacco Friday morning on the French ship, SS Cleveland.

Guthrie and the International Longshoremen's association are required to show at Greenville Dec. 23 why the injunction, ending the picketing, shouldn't be continued until a final hearing on the matter.

Morehead City longshoremen, Leroy and Vernon Guthrie, brothers, insisted that longshoremen were not on strike and they didn't know what the picketing was for. However, they were honoring the picket line and longshoremen would not cross it.

The SPA complaint against the longshoremen states that general statute 95-98, State of North Carolina, makes it illegal for contracts to be made between any state agency and labor union, trade union or labor organization. Signs being carried by the pickets claimed that the state docks were unfair to labor.

Strikes were also in progress at Wilmington, Charleston, S. C., and Savannah, Ga., ports.

The complaint filed by the SPA stated that the SPA could not determine what caused longshoremen to start picketing the Morehead City port.

The injunction was signed by judge Chester Morris, sitting at New Bern, and the papers were served by sheriff Hugh Salter on Leroy Guthrie.

The SS Cleveland was delayed 24 hours because of the strike. Loading started at 8 a.m. Saturday. It sailed at 2 p.m. the same day.

William Davies, of Morehead City Shipping co., agent for the Cleveland, said it costs a modern cargo ship between \$2,500 and \$4,000 a day to sit idle. This does not include the cost for occupying a space at a dock.

Furthermore, ocean vessels have schedules to maintain that are set up months in advance. If they are delayed at one port, they lose their berthing space at the next, money must be paid to men who stand by to load or unload when the ship finally makes port, and the entire foul-up can cost a tremendous amount of money.

The Cleveland made port at Morehead City at 6:30 p.m. Thursday.