

Eight-Man Group To Study Trawl Ban Proposal

● Fisheries Committee To Name Members

● Four Groups Will Be Represented

An eight-man mediation group, yet to be named, is supposed to come up with a solution to the dispute between sports and commercial fishermen over use of trawls in offshore waters.

The Board of Conservation and Development, in session Monday at Raleigh, asked each of the following groups to submit names of three persons to serve on the mediation committee: the North Carolina Fisheries association, commercial fishermen who are not members of the association, members of the North Carolina Wildlife Federation, and operators of sports fishing piers.

The commercial fisheries committee will select two from the three suggested persons from each group. This committee will choose its own chairman.

How soon the committee will be named depends on how soon the nominations are placed before the commercial fisheries committee.

After the committee meets, its recommendations will go to the commercial fisheries committee and the fisheries advisory committee. If both groups concur with the mediation committee, the findings will be placed before the C&D board.

Eric Rodgers, chairman of the state commercial fisheries committee, said last month that such a committee would be appointed. His statement followed a hearing at Morehead City which dealt with a request by sports fishermen that trawls be banned from Cape Hatteras to Cape Fear, from the shoreline three miles out.

The board also took the following action:

● Authorized the chairman of the commercial fisheries committee to confer with the attorney general to devise a workable regulation "that will eliminate the practice of direct selling of undersized edible fish, scrap fish and trash fish to any and all plants engaged in cooking activities."

● Requested the Institute of Fisheries Research to choose several areas in Core Sound and lower Pamlico Sound for conducting clam experiments. The committee wants to learn if dredging is dangerous to the "continued existence of the clam industry."

The latter recommendation was the outgrowth of a request that clam dredging be prohibited on the banks side of the channel in Core Sound. The contention was that mechanical means of taking clams was depleting the clam supply.

State Withdraws Morehead Bridge From Bid List

The State Highway commission has dropped the Morehead City bridge from its Jan. 24 contract letting. The commission said this was done at the request of contractors.

It had previously announced that bids would be received, but not opened Jan. 24 if the Army Engineers had not given an OK on bridge plans by that time.

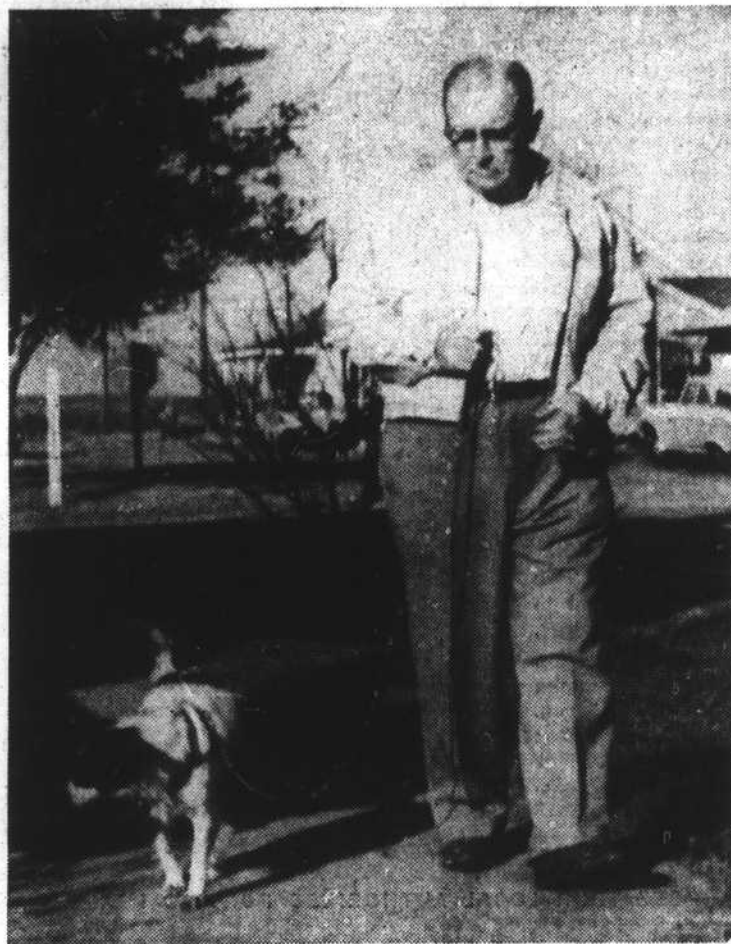
The announced withdrawal met with approval by Morehead City interests who have claimed they would rather see the present bridge stay as is, but with necessary repairs, until the state realizes how necessary it is to build a new bridge farther north so that port expansion can take place.

The new bridge is expected to cost about \$2 million and take at least 18 months to build.

Port Area Busy as Marines Go on Annual Maneuvers

Morehead City Begins New Drive Against Unlawful Dogs

How to Do It



William Jenkins, N. 7th Street, is one of a few Morehead City dog owners who know what a leash and harness are for.

Here Mr. Jenkins is on one of his regular strolls with his dog, Troubles. Troubles doesn't cause nearly as much trouble as dogs who are turned out of the house by their owners to roam at will over town, forage in garbage cans, dig up flowers, hold up

traffic or force pedestrians off the sidewalks.

It is illegal to have a dog within the town limits of Morehead City unless he is licensed, inoculated, kept on his own premises, or kept in check by a leash. The leash is supposed to have the dog on one end and a responsible person holding it on the other. Leashes, dog collars and dog harnesses are available at a nominal cost at local stores.

Beaufort Board Proposes Town Expansion Eastward

Beaufort commissioners, at their meeting Monday night at the town hall, proposed expansion of the town limits eastward from the present eastern town limits to the eastern boundary of Beaufort Fisheries.

The board authorized the holding of a public hearing on the proposal. If 15 per cent of the qualified voters resident in the area express opposition, the law requires that a referendum be held.

In proposing annexation of the area to the east, the board is proceeding under a law that was in effect prior to the "annexation by ordinance" law.

The board has attempted to annex outlying areas "by ordinance" but was thwarted by court action.

The area proposed Monday night has as its northern boundary the northern edge of the Lennoxville road and as its southern boundary the high water mark of Taylor's creek. (See description in legal ad section of today's paper).

Commissioner David Farrior said that he was told that two of the leading opponents of annexation said they would cease opposition if the area to be annexed included Beaufort Fisheries. (The town's mayor, W. H. Potter, manages Beaufort Fisheries and is part owner. The town attorney, C. R. Wheatly, is part owner, and its legal counsel).

Mayor Potter has been keenly interested in expanding the town limits since he took office in May 1959. His efforts have been backed by the town attorney and the board.

Holden Ballou, 1540 Ann St., presented a petition of approximately 68 signatures of Ann and Front street residents. The petition stated that signs were in favor of the town's expansion to include their property.

Fire commissioner Farrior reported that the citizen's band radios for the fire department were tested Thursday night and proved satisfactory. One radio is on the No. 5 truck, one set is at the fire station and the third is a portable set that can be moved from one piece of mobile equipment to another.

In answer to a question by the mayor, building inspector Gerald Woodard said that where a sewer line is available, a property owner is required to tap in.

Commissioners discussed the alley between Craven and Turner, north of Front street, as a parking area. Organizing the area for parking is awaiting a report from E. W. Downum of the merchants association.

Routine reports were given and the meeting recessed at 8:30.

V. J. (Ted) Garner, police commissioner, Morehead City, announces a new campaign to get rid of the dog menace in Morehead City.

Rigid enforcement of the dog ordinance is under supervision of J. V. Waters, street superintendent, who has been charged with this responsibility by the police commissioner.

According to the dog ordinance, dogs are NOT allowed to run loose in Morehead City, whether licensed or not.

Any dog running at large is eligible for pick-up by the dog catcher.

If identity of the dog owner can be learned, the owner will be notified and given five days to get his dog back. To do this, he must pay any license fees due on the dog, plus a \$3 pick-up fee and \$1 a day for each day the dog is boarded by the town.

If the dog has not been inoculated for rabies, the owner is required to have such inoculation made. If the dog is not claimed at the end of five days, it will be destroyed.

Dog owners who persist in letting their dogs run at large will be summoned to court.

Excerpts of the dog ordinance appear on page 7 section 1 of today's paper.

1960 Construction Near Decade Low Set in 1957

Ernest C. Lowe To Spend Nine Months in Jail

A Morehead City man, Ernest Clyde Lowe, drew jail sentences totaling nine months Monday in Morehead City recorder's court. Lowe was tried in three cases and convicted of failing to comply with a former court order, driving with a suspended license and failing to secure transfer of registration and new certificate of title.

The first conviction brought a six-month jail term. In the other cases Lowe was given sentences of three and one months, to run concurrently.

One other defendant received a jail sentence. William F. Brock of Morehead City was convicted of his second public drunkenness offense within a 12-month period and was given 60 days by Judge Herbert O. Phillips.

George F. Lewis, Morehead City, convicted of simple assault on his wife, Mary Lewis, was given a six-month jail sentence suspended on payment of \$50 and costs. Lewis faced an additional assault charge but the court continued a prayer for judgment for six months.

Two Coast Guardsmen, stationed aboard the Chilula, were charged with trespassing on the premises of George F. Lewis. They were Hipolito L. Gutierrez and Simforoso B. Mendoza. Mendoza was found guilty and ordered to pay court costs. Gutierrez was acquitted.

Two defendants, Johnnie Kirk Dennis, Beaufort, and Roland Ray Barbour Jr., Morehead City, forfeited bond when they failed to appear. Both were charged with speeding.

Tommy W. Wilkes, Cherry Point, drew a 30-day jail sentence, suspended on payment of \$125 and costs for speeding and drunk driving. Samuel H. Bussy Jr., Cherry Point, was given 30 days, suspended on payment of \$125 and costs.

See COURT, Page 2

Tide Table

Tides at the Beaufort Bar		
HIGH		LOW
Friday, Jan. 13		
4:42 a.m.		11:28 a.m.
5:10 p.m.		11:32 p.m.
Saturday, Jan. 14		
5:43 a.m.		12:23 a.m.
6:12 p.m.		
Sunday, Jan. 15		
6:39 a.m.		12:27 a.m.
7:08 p.m.		1:17 p.m.
Monday, Jan. 16		
7:32 a.m.		1:22 a.m.
8:01 p.m.		2:08 p.m.
Tuesday, Jan. 17		
8:24 a.m.		2:15 a.m.
8:55 p.m.		2:58 p.m.

A sky filled with planes, and Marine trucks pounding the highways told county residents of preparation this week for the annual spring maneuvers by the Navy and Marine Corps in the Caribbean.

Because of the trouble in Cuba, added significance is attached to the maneuvers this year. The amphibious war games will last eight weeks in the vicinity of Vieques, off Puerto Rico.

Two LSTs, the Lorain County and Waldo County, and one LSD, Plymouth Rock, which are Puerto Rico bound, left Morehead City port Wednesday after taking on men and equipment.

Scheduled for arrival at Morehead City today is the attack cargo ship, Rankin. The attack cargo ship Oglethorpe is due Monday and the attack cargo transport Vermilion is due Tuesday.

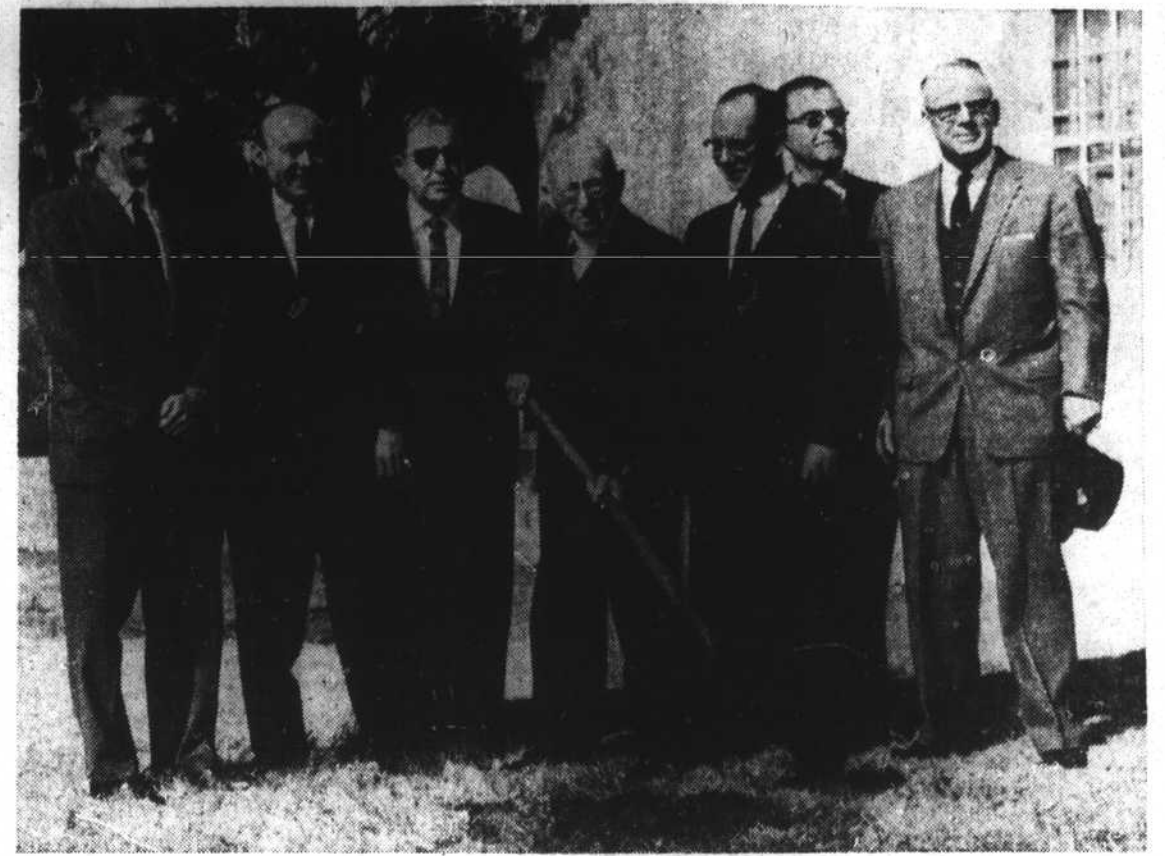
The Rankin will join other ships for the expedition in the Caribbean. The Oglethorpe is one of the ships in squadron 8, now in the Caribbean, which is being relieved by squadron 10.

Flagship of squadron 10 is the converted aircraft carrier Boxer, carrying 1,200 men of the 3rd battalion, 2nd Marines. The Boxer lay off the North Carolina coast four hours Wednesday afternoon while helicopters from nearby Marine bases loaded cargo aboard.

Twenty-four light 'copters from New River, Camp Lejeune, also went aboard the Boxer.

A total of 2,000 Marines will be involved in the war games. The first practice amphibious assault is scheduled for Thursday, Jan. 19.

Ground Broken for Convention Hall



News-Times Photo by McComb

Maltby Taylor, Sea Level, father of the owners of the Biltmore Motor hotel, Morehead City, turns the first shovel of earth for the new conventional hall to be added to the hotel. Dignitaries present for the groundbreaking Tuesday morning are S. A. Chalk Jr., left, president of the greater Morehead City chamber of commerce; A. B. Cooper, mayor of Atlantic Beach; H. J. Williamson, manager of the hotel; Mr. Taylor, George Dill, mayor of Morehead City; Elmer Willis, seafood dealer of Williston, and W. H. Potter, mayor of Beaufort.

Head of Beaufort Merchants Outlines Program for 1961

Fort Macon Park Remains Tops In Popularity

Fort Macon state park in Carteret maintained its top rank in popularity in 1960 with a total attendance of 443,624.

Second in popularity among the state parks was Mount Mitchell in Yancey county with a total of 379,547. Third was Morrow Mountain, Stanly county, with 243,998. Fort Macon's 1960 attendance exceeded that of 1959, which was 440,178. The record was achieved despite a week's closing of the park after hurricane Donna.

December attendance at the park was 15,935, according to superintendent Ray Pardue. Of that number, 555 were fishermen and 9,274 visited the fort.

Total number of fort visitors during 1960 was 263,366.

Attendance at all parks in the state set a new record last year, according to Thomas W. Morse, state parks superintendent.

Mr. Pardue said that funds have been appropriated for repair of hurricane damage at Fort Macon park and actual work is awaiting the arrival of materials.

Fire Association Dues At Newport Payable Now

Members of the Newport Rural Fire Protection association, who are not in the fire district covered by tax levy, are requested to pay their 1961 dues now.

Ray Lackey, president of the fire association, said those who paid dues for two years in 1960 are still eligible for protection.

Those who paid for only one year are now without fire protection, he warned. Dues may be paid to Mr. Lackey or any one of the directors of the association.

J. O. Barbour Jr., president of the Beaufort Merchants association, outlined a program for 1961 Tuesday night when the association met at the town hall.

Points of the program: ● To improve parking conditions. Also cut 2 to 3 feet off the sidewalks on Front street, between Craven and Turner, to provide a wider street for passage of cars.

● Open the north end of Moore street to vehicular traffic and establish a harbor of refuge in Gallant's channel.

● Enlarge launching facilities for boats; promote Bird Shoal as a recreation area.

● Start planning for the summer months and cooperate with the historical association in reopening the Museum of the Sea.

● Undertake a concerted membership drive.

● Start working on sponsorship of East Carteret Good Neighbor Days and plan to make them an annual event.

● Expand the town boundaries and work to build a better Beaufort.

The following committees were appointed: Liaison (to work with town, state and federal governments)—John Jones, Jim Wheatley, Billy Springle.

Legislative and civic — Holden Ballou, chairman; Halsey Paul and Harry Whitehurst.

Traffic and parking — Jack Barnes, chairman, and Gerald Hill.

Trade promotion—Leslie Moore, chairman, E. W. Downum.

Membership and finance—James Potter, chairman, Carl Hattell, Clarence Stamper.

Advertising—William Roy Hamilton, Ralph Eudy and Johnny Willis.

Tourist and sportsfishing — Gilbert Potter, Earl Mades and Wesley Willis.

Mr. Barbour expressed his appreciation to all who participated in the Christmas program. It was reported that the town contributed \$60 in cash toward the event and the R. H. Hill company donated candy given to the children.

Membership insignia for 1961 were given to the membership committee for distribution, and the plan for cooperation with Morehead City in sponsorship of Armed Forces Day was announced.

Attending the meeting, in addition to the president, were Mr. Downum, vice-president; Jarvis Herring, secretary; Mr. Stamper, Mr. Hamilton, James Potter, Earl Mades.

Mr. Eudy, Johnny Willis, Gilbert Potter, Jim Wheatley, James Steed, Roy Eubanks, Mr. Jones, and Clarence Guthrie.

The next meeting will be the second Tuesday in February.

Dr. Woodard Speaks To Beaufort Rotarians

Dr. W. L. Woodard was the speaker at the Tuesday night meeting of the Beaufort Rotary club. He spoke to members on the need for a promotional organization in Beaufort similar to the chamber of commerce, or the reorganization of the chamber itself which was in existence several years ago.

SPA Considers Grain Elevator For Morehead

Construction of an elevator for storing a half million to a million bushels of grain is being proposed for Morehead City.

Reports from Raleigh state that the ports authority plans to float revenue bonds and repay the bonds by leasing the elevator on a long-term basis.

It is predicted that the grain elevator will be one of the first steps in a multi-million dollar port expansion program. Other improvements, such as docks and warehouses at both Wilmington and Morehead City, must await court approval of a method for financing.

The ports authority began planning the grain elevator last summer after a professional engineering study showed a large elevator could be kept busy handling grain grown within 125 miles of the port.

The authority has rated grain as one of its top priority programs because it works in with the state's agriculture economy. Grain trade is limited at present, however, because Morehead City has storage capacity for only 250,000 bushels.

The cost of constructing an elevator for 500,000 bushels is estimated at \$1,250,000. An even larger elevator is being considered because of the possibility of handling grain from upstate North Carolina as well as the Midwest.

Bridge Repairs Now Under Way

The Beaufort bridge closed at 9:30 a.m. yesterday and will be closed again from 9:30 a.m. to 4:30 p.m. today.

J. H. Burruss, resident engineer in this area, said yesterday that the bridge will be open to highway traffic Saturday and Sunday. Tidewater Construction Co., Norfolk, which is making repairs to the bridge fender system, said its men will not work Saturday unless absolutely necessary.

Mr. Burruss said that if the weather is favorable and no complications arise, work on the bridge should be completed by the end of next week.

Water traffic has been notified that repairs are under way and to avoid delay, a detour route through the Morehead City draw is suggested.

Mr. Burruss advises motorists to watch the yellow highway signs on roads leading to the bridge. Whenever the bridge is open to highway traffic, the signs will be turned so that they cannot be read by motorists.

He expressed doubt that there would be many such openings between 9:30 and 4:30, unless equipment breaks down or some other unforeseen incident occurs.

Board Meets Today The Atlantic Beach town board will meet at 10 o'clock this morning at the town hall.

Carteret Doubles Lodging Facilities in 10-Year Span

The number of rooms available in the county for lodging doubled in the 10 years from 1950 to 1960, according to a recent survey made by the greater Morehead City chamber of commerce.

Rooms available in motels, inns, hotels, fishing camps totaled 414 in 1950 and 827 in 1960. The survey does not include tourist homes where overnight accommodations are also available.

The number of out-of-state visitors in the county in 1951 was estimated at 16,900; in 1960, 67,500.

Based on hotel-motel rooms available and 60 per cent occupancy for 200 days, the travel industry income for 1951 amounted to

\$1,791,164 as compared with \$3,782,219 in 1960.

J. A. DuBois, manager of the chamber says, "The estimates do not include rooming houses, cottages and apartment rentals or the sleeping accommodations for hundreds of fishermen provided by our charter fleet six months of each year. . . . Our estimate of a \$4 1/2 million tourist industry in 1960 was entirely too conservative."

How the 1960 total tourist income was apportioned: food and beverages, 28 per cent of the travel dollar, \$1,070,918; hotel-motel, 22 per cent, \$803,200; gas and oil, 19 per cent, \$688,446; retail purchases, 14 per cent, \$535,458.

Recreation and fishing, 8 per cent, \$305,976; tires and service, 5 per cent, \$191,235; and miscellaneous services, 4 per cent, \$182,988.

The percentages of the travel dollar and where it is spent are based on a formula used by the American Automobile association. Travelers spent \$390 million in the state in 1959. If Carteret's travel income that year was about \$5 million, this county received slightly more than 1 per cent of the state's total travel income.

Mr. DuBois notes that the county now needs 200 more rooms to accommodate the large conventions the Biltmore Motor hotel will be able to handle, beginning this year.