

Dig That Crazy Corn!



The Hugh Horrells, route 1 Morehead City, at the intersection of highways 24 and 70 have the craziest corn in their garden! Most of the corn has ears growing right out of the top, where the tassel is, without a sign of a shuck around it! In the above picture Mrs. Horrell holds one of the odd ears (arrow points to it). Her children are Peggy, left, and Michael.

The stalk in a normal manner, a large number of the stalks have the ears shooting out of the top. Here's something else interesting about the Horrell family garden. Last year their white potatoes grew in little clusters on the vine where the blossoms were. There wasn't a single potato under the ground! This strange behavior might interest scientists studying unusual behavior of cells in animal and plant tissue. An article on such research, in connection with cancer, appears in the current issue of Life magazine.

Handcraft Dates Set by Workshop

Dates of handcraft workshops in tin and pine needle were announced yesterday by Mrs. Charles Hassell, director.

Tin craft will be taught by Mrs. Al Hubbard at 9:30 a.m. Friday. There will be a break for lunch and the class continued in the afternoon.

The pine needle craft workshops will begin at 9:30 a.m. Friday, July 6 and 13, Mrs. Ben Jones, instructor.

Three more students can be accepted in tin and pine needle craft workshops. The sessions are \$3 each. Persons wishing to enroll should phone PA 8-3313 or drop by the workshop, 308 Ann St., Beaufort. Summer visitors will be most welcome.

Materials needed for the tin craft class are a tin shears, needle-point pliers, hammer, one nail, large Gulf oil can, beer cans (one king size and one regular), 3-pound size Crisco can, any lids cut from tops of cans, No. 2 or 2½ can with gold lining. Bottoms must not be cut out of cans. The cans should be thoroughly washed.

Each worker should also bring a pair of gloves that are not too bulky.

Needed for pine needle craft are a pair of scissors, thimble, and large-eyed needle. Copper and aluminum craft will be taught at sessions later in the summer.

Two Accidents Occur in Town

Backing up a car for almost a block with poor aim brought a series of charges against a Beaufort resident Saturday. John Henry Madden was charged with backing in the face of traffic, careless and reckless driving, damage to personal property and having no brakes after he backed up on Pine street. In the rearward travel, Madden hit a tree and damaged a porch at the home of James Ed Turner. Madden was driving a 1955 Ford at the time, and was cited by officer Otis Willis.

Smoke from a short circuit caused Rita Oglesby Simpson, Beaufort, to lose control of her 1952 Chevrolet Saturday, police report. She hit a power pole. Minor damage was caused to the pole and the auto.

No charges were made by investigating officer Howard Hill. The accident occurred at about 1:05 p.m.

Morehead City firemen answered a call Sunday at 12:30 a.m. to a fire at 13th and Shackelford streets. A pile of railroad crossing were ablaze. The fire was quickly extinguished.

Officers Report Four Accidents

● Bus Backs into Small Imported Car

● Two Accidents Occur Yesterday

A 1961 Volkswagen tangled with a 1945 Beck bus Friday night on Mansfield Parkway and came out with about \$200 in damages. State trooper W. E. Pickard, who investigated, said the accident happened about 7 p.m. at the intersection of the parkway and highway 70.

The bus had pulled up to the intersection and stopped for the stop sign. The VW, driven by Charlie B. Noble, Kinston, came up behind the bus and also stopped. The bus driver decided to back up a little, didn't see the little car, and backed up on the front of it.

No one was injured and no charges were filed.

Two Fords, one a truck, collided on highway 70 three miles west of Morehead City at 1:40 p.m. Saturday and the truck driver, Robert C. Lewis, route 1 Beaufort, was charged with following too closely.

Trooper Pickard said Roger L. Poling, Cherry Point, was driving a 1956 Ford east on highway 70 and was being followed by Lewis in a 1961 Ford truck. Poling began to stop in the traffic and Lewis, in an effort to avoid hitting him, started to pull out on the right and sideswiped the auto.

Damage to the auto was estimated at \$100 and to the truck at \$50.

Two accidents yesterday were investigated by trooper Pickard. In the first, at 11:15 a.m., a 1957 Volkswagen driven by Morgan B. Wilt, Cherry Point, turned over on highway 70 near the county line west of Newport. Trooper Pickard said Wilt was going east and had started to pass, when he lost control of his car and it turned over.

Wilt was not injured, but damage to his Volkswagen was estimated at \$500.

At 12:50 p.m. yesterday two cars collided at the intersection of highways 70 and 101 east of Beaufort. The trooper said Leslie L. Lee, Havelock, was going east on 70 in a 1956 Mercury. He started to make a left turn onto highway 101, saw another car coming and stopped across the center line.

The oncoming car, a 1954 Dodge driven by James W. Willis, Beaufort, struck the right front of the Mercury. Willis was headed west. Damage was estimated at \$200 to each car. Lee was charged with failing to yield the right of way.

Sheriff Bell Wins by 220 Votes; Democrats Name Femia, Mason

1,632 Vote in Beaufort



Heavy voting in the second Democratic primary Saturday is shown in this scene taken in the county courthouse at about 10 a.m. Saturday. Voters lined up to get ballots and cast votes for the candidates of their choice. Voting booths are to the right of the corridor and ballot boxes on the opposite side.

Second Primary Saturday Was Very Tight Race

Winning the Democratic nomination for sheriff Saturday was the present sheriff, Robert L. Bell. Chosen as Democratic nominees for the county board of commissioners were Dom Femia and Rudolph Mason, Morehead City. It was a tight race.

Nobody knew until after the last ballot was counted Saturday night how the election came out.

The tenseness and doubt was likened to a Beaufort-Morehead basketball game — and to the old-timey Perils of Pauline in the silent films. No one knew whether the hero would untie Pauline from the railroad track until the last few seconds of the last reel.

With more than half the precincts reporting, Ralph Thomas, Beaufort, who was running against Bell, had a healthy lead. In the commissioners' contest, Femia was trailing; Lewis and Mason were front runners.

Then the returns from the large precincts, Beaufort, Newport and Morehead No. 1 and 2, came in. The Morehead ballots tipped the scales in favor of Bell, Mason and Femia.

It was a big-time national election in miniature. The rural votes came in first but it's the "big city" vote — the vote that takes the longest to tally — that can undermine vote of the areas outside the cities.

As things stand now, for five months the county will be governed in "lame duck" session by a majority of county commissioners who will not continue on the board: Skinner A. Chalk Jr., Morehead City, who did not run for re-election; Gaston Smith, Atlantic, and Tommie Lewis, Harkers Island.

The other two commissioners, who were re-nominated in the May primary are Moses Howard, Newport, present chairman of the board, and C. Z. Chappell, Beaufort.

On the Democratic ballot for commissioner in the fall will be Howard, of Newport; Chappell, William Roy Hamilton, both of Beaufort; Dom Femia and Rudolph Mason, both of Morehead City.

Smith, defeated candidate for commissioner, said Saturday after the election, "Moses can sit there and be referee."

This is the first time in many years that the area east of Beaufort has been without a Democrat on the county board of commissioners. The fact that Beaufort, in May, placed two commissioners on the November ballot, was probably a decisive factor in Morehead City voters' turning out to see that the board was not "top heavy" with Beaufort representatives.

The last chance for down east to get a representative on the board of commissioners is November 6. To do that, Democrats will have to vote for a Republican. Will they be able to overcome an alleged abhorrence for voting Republican and put an X in that column? That remains to be seen. If so, it will knock one of the present Democratic nominees off the board.

The Republican down east candidate is Headen Willis, Smyrna. The other Republican nominees are Kenneth Wagner, Gerald Murdoch, James Hux, of the Morehead City area; and Gordon Hardesty, Beaufort.

According to reports from the polls, 1,632 voted in Beaufort and 1,986 at the Morehead City polls. The Democratic faction in power

See PRIMARY Page 2

Town Board Will Convene Thursday, July 5

Thursday, July 5, was set as a special meeting night for Morehead City commissioners to take action on the budget for 1962-63.

The date was set at the regular meeting of the board Thursday night at the municipal building. Commissioners also voted to use the committee system in administration of town affairs, as recommended by the League of Municipalities.

Under this system, a committee of board members will handle various departments, such as police, fire, street, etc. Under the present system, one commissioner is responsible for each department.

Mayor George Dill said that he had already made the appointments and the commissioners would be notified in the near future as to their committee assignments.

Members of the First Presbyterian church, Morehead City, appeared before the board to request help in solving a sewer problem where they will put up a sanctuary. The board approved relocation of a manhole, the cost of relocating to be paid by the church.

Making the request were George Vickory, H. L. Joslyn and Dr. John Gailey.

They were told that if the sewer should sand in, cost of repair would be the responsibility of the church.

On other matters, Mr. Joslyn told the board that garbage cans lining Evans street, on the water side, are an eyesore. He suggested that the town pass an ordinance requiring people to keep garbage cans off the street except on the days the garbage is collected.

He also requested that the town repair the east alley in the block between 23rd and 24th streets between Arendell and Evans.

Ted Garner appeared and asked the board to post two-hour parking limit signs on Evans street between 4th and 6th streets.

Rezoning of Arendell street between 28th and 29th streets, on the north, was discussed. The board authorized that a hearing be scheduled to hear the public's views on rezoning the area from residential to business.

A 10-day vacation of the clerk of court, Mrs. Mary Hughes, was approved, with a substitute, Mrs. Ben Green, to be named deputy clerk and assume the clerk's duties while she is gone.

Ray Hall, town supervisor, requested a ruling on the town's keeping up school grounds and football fields. No action was taken.

Commissioners present were S. C. Holloway, Jerry Willis, Dom Femia, D. J. Hall and Dr. Russell Outlaw.

Recreation Chairman Takes Money Problem to Board

Ponies Will Be Penned July 4th

Ponies will be penned on Shackelford Banks Wednesday, July 4.

Boats will leave Harkers Island for the banks between 7 and 8 in the morning. They will carry persons from the mainland interested in seeing the pony roundup.

Some of the horses will be offered for sale. "Banker ponies" are a small type of horse usually desired by youngsters for pets. After corralled and branded, the horses not sold will be released by their owners (residents of mainland Carteret) to roam the banks for another year.

The July 4 penning is expected to be the only one at Shackelford this year.

How They Ran

CANDIDATE	VOTE
Sheriff	
Robert Bell	3,472
Ralph Thomas	3,252
Commissioner	
Dom Femia	3,390
Rudolph Mason	3,200
Gaston Smith	2,985
Tommie Lewis	2,861

These are unofficial returns. The returns as determined by the board of elections, precinct by precinct, will appear in Friday's paper.

Of the above slate, Bell, Femia and Smith were backed by the Democrats now in office; Thomas, who ran "with no political ties" was adopted by the March for Democracy faction in the second primary, as was Lewis, who in the first primary was with the incumbents.

Mason is a "March for Democracy" Democratic candidate. That faction of the Democratic party put one man, William Roy Hamilton, on the November ballot in the May 26 primary.

Tackle, Outboard Motor Disappear

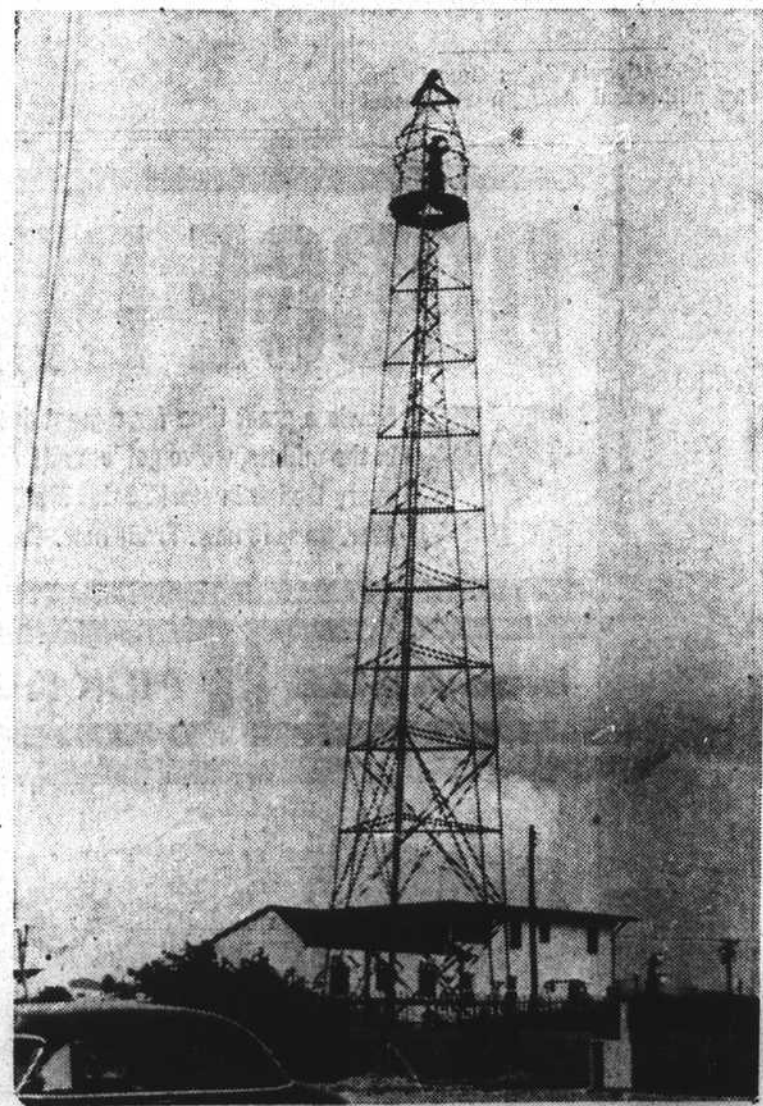
Fishing tackle valued at \$300, and an outboard motor were stolen over the weekend, according to the sheriff's department.

Deputy sheriff Billy Smith said the fishing tackle, owned by M. E. Thomas, was outside a trailer at Thompson's steel pier on Bogue banks when it was apparently taken early Sunday morning.

The outboard motor, owned by T. D. Lewis, Morehead City, was of 45 horsepower, and was taken from a boat at the rear of the Lewis sports marina on Radio Island.

Deputy sheriff C. E. Bunch is investigating.

Tower Erected



This tower, constructed next to the Atlantic Beach police station, is one of several put up by the Coast and Geodetic Survey, which is recharting the coast after late winter storms this year drastically altered the coastline. John Boddie, Chevy Chase, Md., is the tiny figure at the top of the 77-foot tower, where light beams are used to establish bearings from the Cape Lookout lighthouse.

The March storms along the Atlantic seaboard roughed-up the ocean bottom as much, if not more than it altered the beaches, according to the latest report by the Coast and Geodetic Survey, US Department of Commerce.

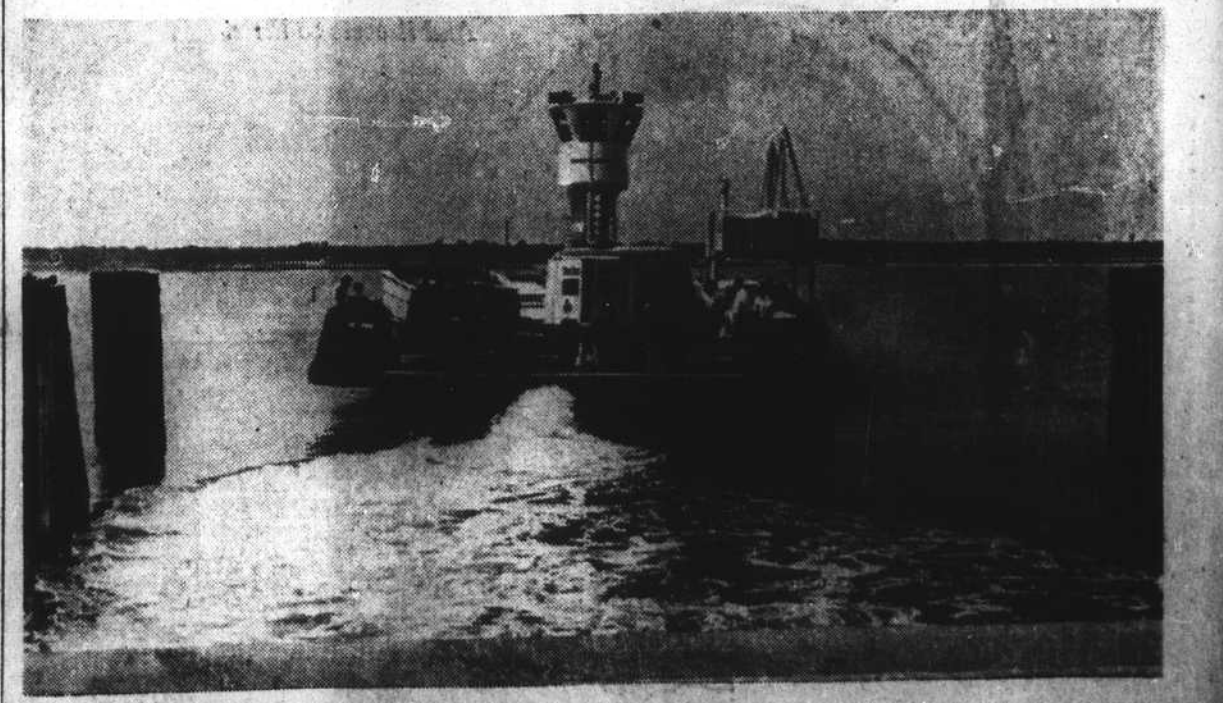
Working from C&GS launches and ships, the hydro-parties have come up with a number of surprising discoveries. Major changes, for example, were noted around Cape Henlopen, Delaware, where 40-foot depths were found to have shoaled to less than 3 feet! Cape Henlopen, itself, has built out several hundred feet to the northwest, partially blocking the old channel. Another survey party, working Sinepuxent channel between Assateague Island and the mainland near Ocean City, Md., reportedly found a depth of 19 feet

See TOWER, Page 2

Tide Table

Tides at the Beaufort Bar	
HIGH	LOW
Tuesday, June 26	
2:53 a.m.	9:29 a.m.
3:27 p.m.	10:11 p.m.
Wednesday, June 27	
3:58 a.m.	10:23 a.m.
4:38 p.m.	11:06 p.m.
Thursday, June 28	
5:02 a.m.	11:16 a.m.
5:35 p.m.	
Friday, June 29	
6:00 a.m.	12:01 a.m.
6:28 p.m.	12:06 p.m.

Ferry Moves Out of Slip



The Emmett Winslow, ferry at the west end of Bogue Banks, leaves the Banks side for its terminal at Cape Carteret, across Bogue Sound near Swansboro. The ferry operates on an hourly schedule, making a round trip every hour, leaving the banks side on the half hour and the mainland side on the hour.