

THE YANCEY RECORD
ESTABLISHED JULY, 1936

Editor Frances M. Hamrick

Published Every Thursday By
YANCEY PUBLISHING CO.
A Partnership

Entered as second-class matter November 11th, 1936, at the Post Office, Burnsville, North Carolina, under the act of March 3, 1879.

F. F. A. Chapter Will Give Radio Program

The Burnsville Chapter of the Future Farmers of America will give a program over station WWNC on next Saturday morning at 10:30, observing National FFA week.

Those who will be recognized on the program are Phillip Styles for dairy judging, Reed Hall for livestock judging, Clifford Peterson for seed judging, Mitchell Hinson for Father-Son banquet and R. L.

Bailey for forestry. The Taylor Brothers band will play.

Officers for the chapter are: Port Taylor, president; Reece Brinkley, vice president; J. B. Banks, secretary; Charles H. Parnell, reporter; R. L. Bailey, treasurer; R. M. Proffitt, advisor.

New Radio Time

The time of the Taylor Brothers' broadcast over WMIT has been changed from 7:30 to 8 p. m. on Fridays.

Tobacco Growers Urged to Guard Against Plant Disease

Burley tobacco growers in Western North Carolina and other areas know that wildfire and blue mold spell trouble and reduced profits. They know that these names identify two diseases which often destroy young tobacco plants in the seed bed.

Wildfire is perhaps the better known in the burley growing area but either disease is capable of causing wholesale destruction in a short time. Wildfire is even a greater menace because this disease may also spread later on in the field from plants which carried the deadly germs from the plant bed to the field.

Field infections cause poor quality tobacco. For this reason, even the plants which may survive an attack of wildfire in the plant bed are unfit for setting in the field. Such a plant may appear to be perfectly healthy and still be a carrier of the wildfire organism.

Why should growers take a gamble on destructive diseases like these when they can be controlled at little cost? Perhaps it is because the treatments for wildfire and blue mold are PREVENTATIVES rather than cures. It seems that many growers always hesitate to use pest control measures when the plants appear to be doing nicely. Instead, they feel that they will get by somehow without treating their beds, and sometimes they do. However, when conditions favor these diseases and they strike suddenly, as they did in the spring of 1949, these growers then would be willing to try almost any remedy. But that's too late!

According to Dr. C. J. Nusbaum, who spends all his time working with tobacco diseases at the N.-C. Agricultural Experiment Station, there are no satisfactory CURES for wildfire or blue mold—ONLY PREVENTATIVES.

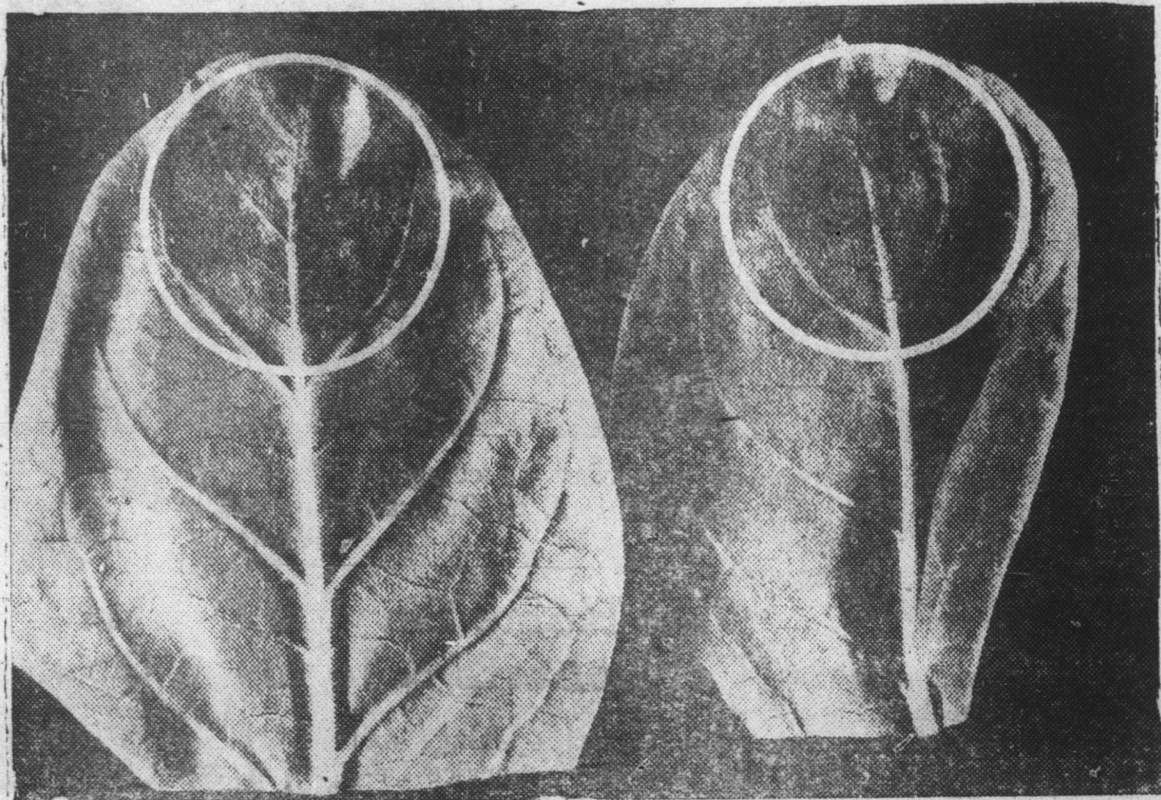
To be effective, these preventative measures must be applied before the disease make their appearance. This is a very important point. In fact, it is the key to success in avoiding serious damage from wildfire or blue mold. Year in and year out, all growers would be able to produce better plants more cheaply by making disease control a regular practice and enjoying the satisfaction and profits that a well-managed plant bed can give.

Different Diseases—Different Treatments—

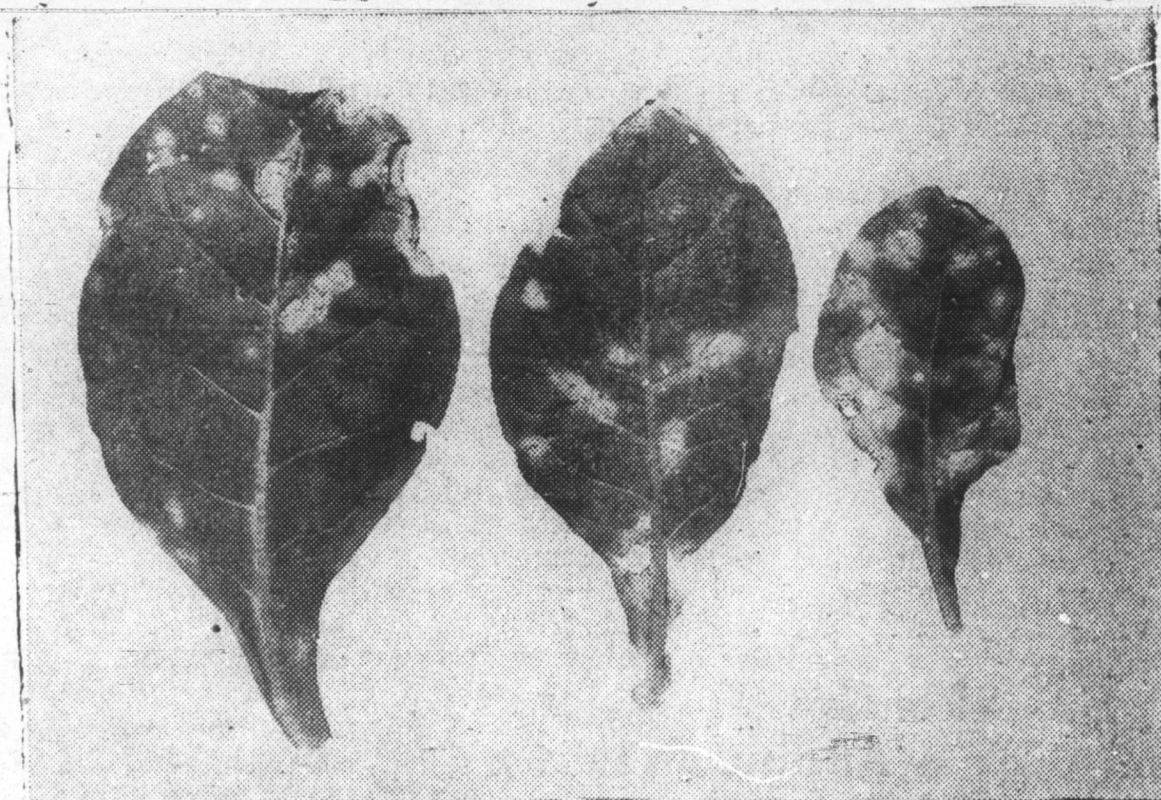
Wildfire and blue mold are separate and distinct diseases caused by two different organisms. Growers in the burley area often confuse blue mold with wildfire.

Blue mold does not produce the round, yellowish or brownish spots, surrounded by a light band, as does wildfire. Instead, the affected leaves at first take on a yellowish cast and turn downward at the edges. A bluish or grayish moldy growth appears on the underside of these leaves. Later the leaves or even the entire plants may be killed, either in spots or throughout the bed.

Ask your county agent for instructions for treating seed beds to guard against these Diseases.



Under side of tobacco leaves infected with blue mold. Notice powdery patches of mold inside white circles.



Tobacco leaves showing typical circular wildfire spots surrounded by wide yellow band.

Presbyterian News

There will be a District Youth Rally at Hot Springs Sunday afternoon. The Yancey County young people who plan to attend will meet at the Presbyterian Church at 1:00.

Sunday evening at 7:30 Mrs. Swartz will lead the worship service at Mine Fork.

PHIPPS CREEK

Mr. and Mrs. Frank Roundtree are visiting their aunts, Misses Annie and Barbara Boone.

Singing Convention

There will be a singing convention at Double Island Church, on Saturday night, March 4th at 7:30 p. m. All groups of singers and the public are cordially invited to attend and take part.

About one-half of the forest land in North Carolina is stocked with timber less than 40 years old.

Mrs. J. W. Robertson and Miss Atchie King of Bald Creek visited Mr. and Mrs. Lattie Styles during the week end.

REVIVAL

A Revival meeting is now going on each night at the Church of God in West Burnsville. Everybody is cordially invited to attend.

CARD OF THANKS

We wish to express our sincere thanks to all our friends for the many kindnesses during the sickness and death of our son, Alvin, and for the floral offerings.

Mr. and Mrs. A. R. Westall.

BUY SECURITY BONDS

Attention Farmers:

Seeds are now available under AAA Program. We invite you to bring your orders to us for Quality Seeds.

FOR YOUR SPRING FARMING NEEDS—WE HAVE:

- Vulcan Plows
- Garden Plows
- Chattanooga Plows
- Cultivators
- Lynchburg Plows
- Complete Lines Plow Repairs
- Disc Harrows
- 4 Pt. Heavy Barb Wire
- Section Harrows
- Garden & Field Fence

ALL GRADES FERTILIZER, PH OSPHATE & AMMONIA NITRATE OF SODA

Sportsmen:

We have on display our complete Lines of Fishing Equipment—We invite you to come in and look them over. Rods, Reels, Lines, Flies, Hooks, Boots, Artificial Baits, etc. Fishing License.



Leonard Is cold clear to the floor!



Model CM Other models from *Prices shown are for delivery in your kitchen with 5-Year "Protect" Plan. State and local taxes extra. Prices and specifications subject to change without notice.

- 40-lb. Frozen Food Chest!
- Loads of shelf space!
- 12-quart crisper!
- Bonus cold space! Refrigerated Fruit Freshener keeps fruits and soft drinks taste-tingly cold!
- Powered by Leonard Polarsphere...the thrifty cold-maker that's sealed-in-steel!

See the complete line! GET MORE... GET COLD CLEAR TO THE FLOOR! GET Leonard!

Duchess WASHERS



BLUE RIDGE HARDWARE COMPANY "Where Quality & Service Rule"

PHONE 21 BURNSVILLE, N. C.

GMC to Offer More Models, More Power, More Features for '50'



GMC dealers across the country will soon be displaying new 1950 models. While few of them have the room to feature exhibits as extensive or elaborate as this special factory showing, it takes only one GMC to demonstrate the rugged good looks, the sturdy truck-built engine and chassis that are characteristic of every one of the wide variety of light,

medium and heavy duty models in the GMC 1950 truck line. Additional models this year will include new series in the 1 1/2 and 2 1/2-ton ranges, new middle-weight six-wheelers and new lighter Diesels. In addition, GMC will feature increased horsepower in its light and medium duty engines, as well as many cab, chassis and engine advancements.