



Some of you sweet corn growers may be looking forward to the satisfaction and joy that will be yours when you sink your teeth in the first tender ears.

Perhaps the corn ear worms are also looking forward to that time and they usually get there first. However, they can be effectively controlled with very little trouble.

For small gardens it is probably sufficient and easiest to dust the silks of the corn with 5 per cent DDT dust.

weather we may expect to have trouble with red mites, commonly called "red spiders." These very small insects attack the undersides of the leaves of many flowers, vegetables and shrubs, sucking the plant juices and often killing the plants.

And while we are on the subject of insect control let us not forget the everpresent Mexican bean beetle. Don't let the beetles seriously damage the bean plants before you do something about it.

With the advent of hot, dry

1954 ACCIDENT FACTS

There were 1,143 drivers involved in the state's 880 fatal motor mishaps last year reports the Motor Vehicles Department.

at Marysville, Salt Lake City, a prospector discovered radioactive minerals while examining some old mines and gave the United States its first important source of primary uranium.

The average housewife spends one third to one half of her working day in the purchase, preparation and care of food and related activities.

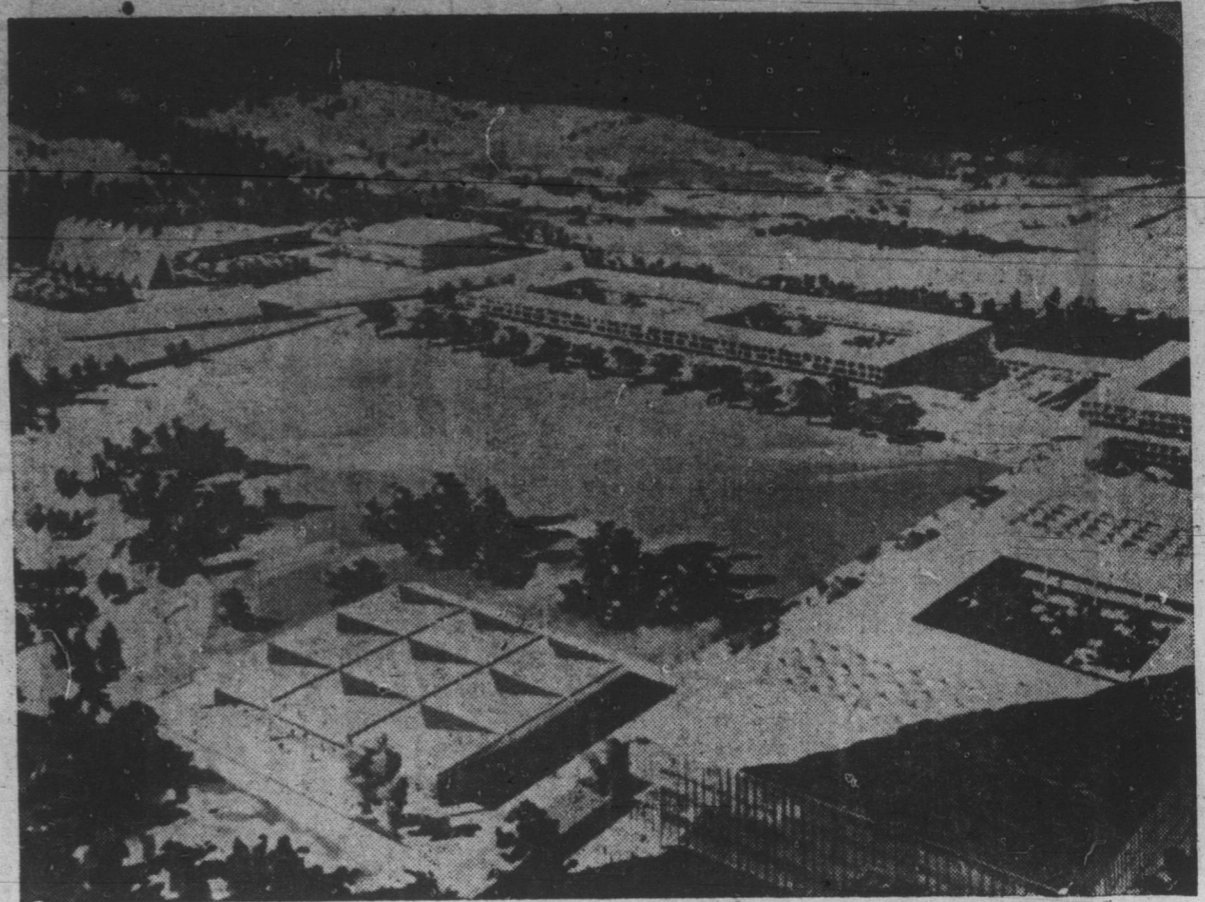
The four leading U.S. exports are industrial machinery, automobiles, grain and cotton.

hat some of the bean leaves have been eaten so that they resemble a piece of lace, it is time to get busy. The best control in the home garden is a 1% rotenone dust.

"EASY DOES IT" BY HELEN HALE

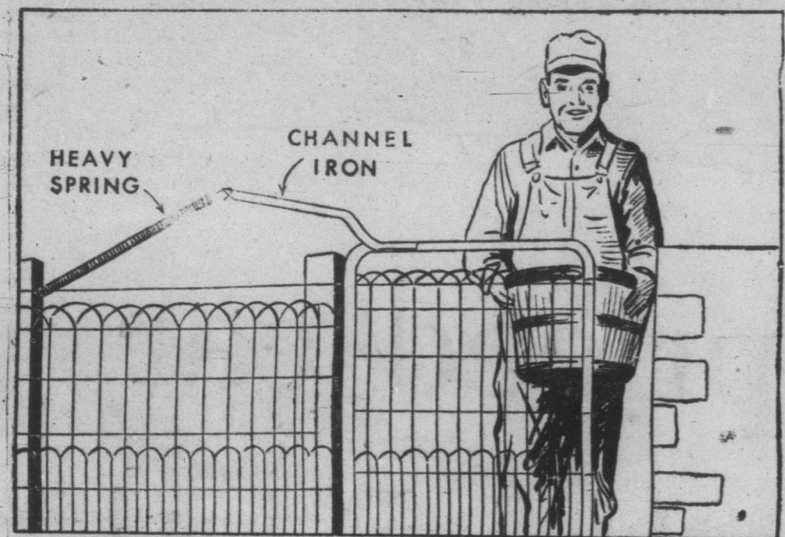
PRETTY salad for a lovely day uses halved grapes, canned cling peach slices and cubes of cream cheese in lime-flavored gelatin.

Recipe of the Week - Rhubarb Marmalade (Makes 4 pints) 4 pounds rhubarb, 5 pounds sugar, 1 pound seeded raisins, Rind of 1 lemon, shredded, Juice of 2 oranges, 1/2 teaspoon cloves, 1 teaspoon cinnamon.



AIR SCHOOL PLAN . . . Architect's sketch shows layout for U. S. airforce academy north of Colorado Springs, Colo., including chapel, administration building, social center, school, and dining hall.

FENCE LINES



GATE CLOSER . . . A farm gate can be hinged to swing both ways so you won't have to set down the load you are carrying to open the gate.

2nd step IN SPARTAN'S 10-10-20 PLAN to help you Grow GREAT Layers



"SQ" GROWING SPARTICLES

When your chicks are about 10 weeks old, it's time to start building their bodies for the job ahead. It's time to put them on "SQ" Growing Sparticles.

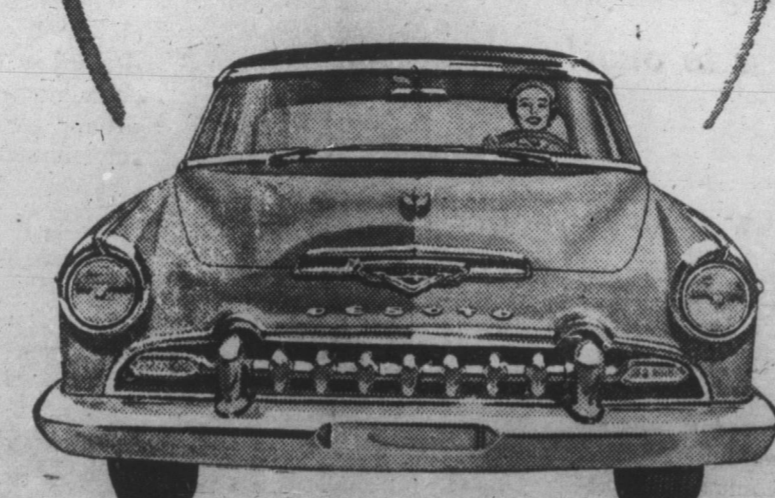
Don't depend on grain, grass and grasshoppers to build the big, strong bodies and rugged frames it takes to make great layers. They won't do it . . . but "SQ" Growing feed will because it's built to do the job . . . better . . . faster!

JOHNSON & COMPANY BURNSVILLE, N. C. PRESNELL & PRESNELL NEWDALE, N. C. "Researched Feeds for the Southeast"

"HASTY CORNER" AND "VACATION ROAD"



Long and Low... eager to go!



DE SOTO

DRIVE A DE SOTO BEFORE YOU DECIDE STYLES & COMPANY SOUTH MAIN STREET BURNSVILLE, N. C.



No Thinning... Stir and Apply You can do such wonderful things with colors! SUPER KEM-TONE the deluxe latex-base washable wall paint

More than a hundred decorator-approved colors, arranged by experts in an almost unlimited number of harmonies . . . wonderful ideas for your home. And so easy with SUPER KEM-TONE!

- Flows on smoothly with brush or ROLLER-KOATER. Dries in an hour to a velvet-rich finish. It's the latex-base paint you hear so much about. Rubber-tough . . . after 30 days completely washable. So easy to use, so fast to dry you get a "new room" in a day. A gallon is usually enough for walls in the average room. And for woodwork . . . matching colors in KEM-GLO.

Product information for KEM-GLO ENAMEL and SUPER KEM-TONE Applique, including application instructions and prices.

B. B. Penland & Son Company PHONE NO. 8 BURNSVILLE, N. C.