

SHEEP RAISING IN YANCEY COUNTY

(Continued from page 1)
making a slow turn upward. Sheep fit in well with our small farms. Even on our beef cattle farms a few sheep are profitable grazing with cattle. They are to help keep pastures free from certain weeds and grasses cattle will not eat.

Sheep production is one of the very few projects that 100% of the original investment is expected to be returned the first year. This can be done by new growers too. Another feature of sheep production is the fact that with normal grazing the annual wool crop will pay for winters feeding this leaves the lamb crop clear. Five ewes can be pastured, fed and cared for at the rate of one beef cow. Normally 115 to 150% lamb crop is expected. With present prices as a guide sheep production profits will double those of beef cattle on the same pasture area. Why do not more farmers start growing sheep?

First, we do have a dog hazard. Second, our farms must be better fenced. Third, the individual farmer must have a desire to keep sheep and give them attention when needed — especially during the lambing season.

With Burley tobacco allotments cut 25%, farm prices gradually declining and farmers generally seeking new sources of income to provide a normal livelihood, sheep growing may be the solution.

Farmers desiring additional information should contact any of the County Agricultural Workers who are all members of the Yancey County Challenge Program. Since one of the aims of the Challenge Program is to increase farm income on all farms, increased sheep production in Yancey County is recommended by all members of the Challenge Program.

4-H BOYS ATTEND FORESTRY CAMP

Around 100 young 4-H Club boys have been selected to participate in the first 4-H forestry camp to be held at 4-H camp Millstone June 20-25, according to John L. Gray, extension forester.

The forestry camp is being conducted by the North Carolina Agricultural Extension Service and is sponsored by the Southern Bell Telephone and Telegraph Company.

Designed to develop "know-how" through "show how", the boy will receive instruction in such things as planting a forest, measuring timber, improving timber stands, harvesting a timber crop, how to work safely in the woods, and care of woods equipment.

Experienced foresters and woodsmen will handle the demonstrations.

Candidates for the forestry camp were selected by county agents from among boys who were outstanding in 4-H forestry work in their county. He must have completed at least one forestry project successfully and turned in a record book.

The boys have been divided into 13 groups, with counselors assigned to each group.

The camp site is located between Hoffman and Ellerbe.

The scope of the problem of the aged in the United States is indicated in a study which reports that since 1900 the number of persons 65 and over has quadrupled while the total population has only doubled.

Cars scrapped in the year 1925 averaged less than 22,000 miles. Cars scrapped in 1945 averaged 81,000 miles.

More than 1,000 scientists and 3,000 technicians are now working on research sponsored by the American Cancer Society.

EDWARD D. SHUFORD STATIONED IN GERMANY

5th Div., Germany — PFC Edward D. Shuford, son of Mr. and Mrs. V. C. Shuford, Celö, N. C., is a member of the 5th Infantry Division in Germany. Realistic field problems and maneuvers form part of an intensive training program conducted by the "Red Diamond" division in southern Germany as part of the Seventh Army. Private First Class Shuford, a rifleman in Company E of the division's 2nd Regiment, entered the Army in February 1954.

NOTICE TO VETERANS

The North Carolina Veterans Commission will have a representative, Jack C. Winchester, District Officer, with the County service Officer, Court House, Burnsville, N. C., on Thursday, June 23, 1955 from 11:00 a. m. to 4:00 pm and with the County Service Officer, Court House, Bakersville, N. C., on Friday, June 24, 1955 from 8:30 am to 2:30 pm, to assist with veterans and their dependants.

Mr. Winchester states the

deadline for Korean veterans school or training is before the end of three years following discharge, separation, or retirement from service. All Korean veterans have 120 days following separation from service in which to take up the waived service insurance or pick-up the new insurance.



"EASY DOES IT"
BY... HELEN HALE
LINE the bottom of your vegetable crisper with waxed paper or aluminum foil to keep it neat. Vegetables and fruits will not stain the container and it's easier to discard the paper or foil than to scrub it clean. Kitchen floor areas which have to take a great deal of wear should have a floor mat on them. You

RECIPE OF THE WEEK
Garden Salad Bowl (Serves 4)
2 cucumbers, sliced
10 radishes, sliced
1/2 cup sliced green onions
1 bunch watercress, separated
1/2 cup chopped celery
1/2 cup shredded cabbage
French dressing
1/2 teaspoon salt
Toss vegetables together with French dressing and salt. Serve in a wooden salad bowl which has been rubbed with a cut clove of garlic, if desired.

might try one at the back entrance, as well as a fatigue or cushioned mat at the sink where you spend much time.

If your dishpan is too low for you to wash dishes comfortably, get a plastic rectangular container on which to place it, thus raising it to a better working height.

When your sink becomes stained, use a diluted chlorine bleach in it for a few minutes to whiten it. This is also a good time to bleach the dish cloth or stained towels since they can sit in the same solution.

After grating some soft cheese, rub a hard crust of bread over the grater to clean the cheese off easily.

have rusted can be cleaned with a rust remover. Use steel wool on them periodically to prevent rust from forming.

WORDS AND THOUGHTS

YESSIR! THEY SURE BUILT YOU A NICE HOUSE, AL



BUT LET'S FACE IT... Could throw a dog through those cracks around the windows



SUBSCRIBE TO THE RECORD



Q—I note in my paper the value of the dollar is now 99.6¢. The last I heard it was down around 55 cents. Can you account for this rise in value?

A—It's easy to account for. Some firms have changed the basis for evaluation of the dollar from the former January 1939 base, equal 100 cents, to a 1953 base, equal 100 cents. In April under the new base the value was figured at 99.6¢, down from 99.7¢ in April 1954. Under the old formula, the 1955 dollar in April was worth in purchasing value 55.3¢ as compared to 55.4¢ a year earlier. Under either base, they'll buy the same.

Q—Occasionally I earn a few extra dollars on the side. Can I use this money to make advance payments on my house bought under a GI loan?

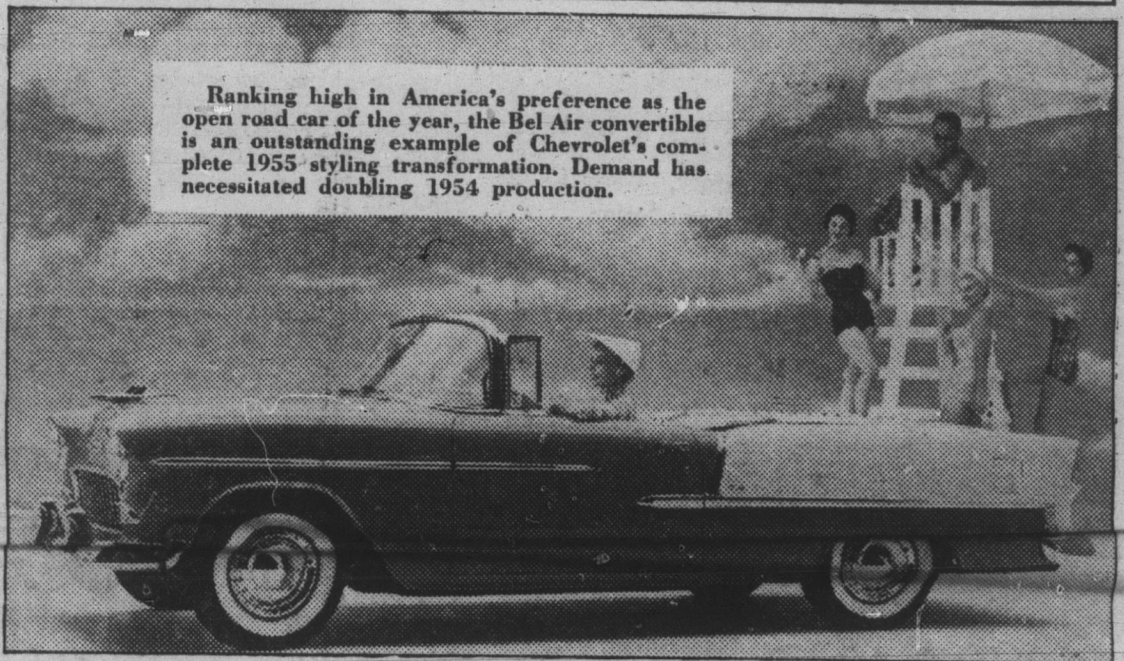
A—Yes. Your pre-payment may be for either one monthly payment or \$100 whichever is less, or in multiples of one of those payments.

Q—How much money can I borrow on my permanent national service life insurance policy?

A—Up to 94% of the cash value of your policy. Your VA district office, where you mail your premiums, can give you the amount of your current cash value.

Is there a record of all the debates in Congress in both houses?
Some of these overlap, but debates can be found in Annals of Congress, 1789-1824; Register of Debates, 1824-1837; Congressional Globe, 1833-1873, and the current Congressional Record to present time. These can be found in the Library of Congress or the Archives building.
It is meant by the first and second sessions of Congress? Ordinarily, in point of time, each Congress commences on January 3rd and continues for two years, regardless of the number of regular special sessions. Generally, however, the sessions are divided into first and second sessions, although some congresses have as many as four sessions.

Convertible Popularity on Upgrade



Ranking high in America's preference as the open road car of the year, the Bel Air convertible is an outstanding example of Chevrolet's complete 1955 styling transformation. Demand has necessitated doubling 1954 production.

You'll be money ahead when you discover



THERE IS A DIFFERENCE IN HOUSE PAINT!

In this age of scientific progress, you are entitled to house paint on your home that provides the maximum in lasting beauty and protection. Sherwin-Williams makes SWP House Paint in only one grade...the best they know how to make.

Why risk disappointment when you are sure of satisfaction if SWP House Paint is used for painting your home? There are substitute house paints that sell for less than SWP, but don't let that fool you! Insist upon SWP and be sure!

Know all the facts. Get your FREE copy of our booklet "The truth about House Paint"

For interior and exterior use...
S-W PORCH & FLOOR ENAMEL!
Durable finish for porches, steps, kitchen and playroom floors. Withstands rain, snow, sun, sand, hard wear. 9 rich colors. \$1.50 Qt.

B. B. PENLAND & SON CO.
BURNSVILLE, N. C.

Photos Seem Alive!



There's a real art in taking a portrait

that captures those natural looks and twinkles and Robison knows how... that's why our photos come to life. Prove it. Call 2131 for a sitting.

JOHN ROBINSON STUDIO
BURNSVILLE, N. C.

for more pure pleasure, have a

Camel



No other cigarette is so rich-tasting yet so mild



TRAFFIC MANAGERS NEEDED NOW by the MOTOR TRUCKING COMPANY Veterans -- Use your G.I. Rights to Secure Your Future!

THE OPPORTUNITY OF A LIFETIME

There is now, and always will be a big demand for trained and qualified young men and women for traffic positions. Traffic positions start with good pay with unlimited possibilities for advancement in this wide-open field.

Here is your chance Veterans, to cash in on your educational eligibility time. Use your G. I. rights to learn a job that will make you independent for life.

- Motor Carrier Rates and Traffic Management Course Prepares You for Such Jobs As:
- RATE CLERK
- CLAIM AGENT — CASHIER
- BILLING CLERK — DISPATCHER, MOTOR TERMINAL
- MANAGER, TRAFFIC SALES
- MANAGER, TRAFFIC
- MANAGER

We will assist you in getting a job in Hickory industries while you are taking your Traffic Management course.
Your job earnings plus G. I. subsistence allowance will make you a nice income. Thus you can afford to move to Hickory.
Write today for full details.

CLEVENGER COLLEGE

212 3rd Avenue N. W., HICKORY, N. C.

OF BUSINESS ADMINISTRATION

P. O. Box 157, WILKESBORO, N. C.

BEST for top production!

Spartan Quality **DAIRY FEEDS**

16%—20%—24%—32%

Spartan's Very Best Milk-makers!



Best for top production... best wherever good cows are carefully fed. "SQ" 16% and 20% are coarse-textured, complete rations—24% and 32% are concentrates to be mixed with ground grain.

JOHNSON & COMPANY
BURNSVILLE, N. C.
PRESNELL & PRESNELL
NEWDALE, N. C.

Researched Feeds for the Southeast!



THIS IS A GOOD TIME TO GET THAT REMODELING OR HOME IMPROVEMENT JOB DONE. AND ROBERTS & JOHNSON IS A GOOD PLACE TO GET YOUR MATERIALS. OUR QUALITY IS GOOD AND OUR PRICES RIGHT.

Roberts & Johnson Lumber Co.

PHONE 14

BURNSVILLE, N. C.