

Our commercial crop of strawberries is planted in late winter or early spring so that the plants set will develop a good bed of runner plants during the growing season which will produce next year's crop of berries. However, for the home garden it is practicable to plant strawberries in the fall. By fall planting you will get berries only from the plants you set—they will not make runner plants this late. For this reason the plants should be set much closer together, not more than 12 inches apart, and it will take a great many more plants than for spring planting. You may have difficulty obtaining plants this early, but plants set now will become established and give you better plants and a better crop next spring than from plants set later. The Albritton and Massey varieties have been very satisfactory, especially in Eastern and Piedmont North Carolina. The Pocahontas variety did very well for last spring in spite of the freeze and is being especially recommended for fall planting by the Virginia Truck Experiment Station at Norfolk, Va. Do not plant everbearing varieties except in the mountain areas. They have not been generally satisfactory in the eastern areas.

If you have an established strawberry bed and have not fertilized the plants this fall, do so at once. Use any good garden fertilizer at the rate of 3-4 gallon to one gallon per 100 feet of row, depending on the fertility of the soil. If the rows

are narrow, the fertilizer may be drilled in on each side of the row. If the beds are wide, broadcast the fertilizer over the plants at a time when the leaves are dry and immediately brush the fertilizer off the leaves. This fall application is very important for Piedmont and mountain areas because it is the last fertilization during this season. In the Coastal plain areas another similar application should be made in December or early January.

If you are growing boysenberries or other types of dewberries, the grass should be cleared out of them and the vines straightened out on the ground so that they can be easily gathered up and tied to stakes or wires in the spring. If any new plants are desired for spring planting, throw a shovelful of soil over the tips of the vines. They will form roots and buds during late fall and may be cut from the vine and planted in the spring when the vines are tied up.

The writings of Marco Polo disclosed that 13th-century China had a highly developed postal system. "Horse posthouses" were maintained at 25-mile intervals on highways radiating from Peking to the various provinces.

Although the Atlantic and Pacific oceans are only 50 miles apart at the two channel entrances of the Panama Canal, there is a remarkable difference in the height of their tides. The Atlantic tide rises and falls an average of about one foot; the Pacific, about 12½ feet.

SUBSCRIBE TO THE RECORD

FORESTRY-U.S.A.



THE U.S. FOREST PRODUCTS LABORATORY AT MADISON, WIS., HAS DEVELOPED A PROCESS FOR CONVERTING WOOD WASTE INTO MOLASSES WHICH CAN BE USED AS A SUPPLEMENTARY FOOD FOR LIVESTOCK.



FORESTS and grass
THE NATIONAL FORESTS HELP THE LIVESTOCK INDUSTRY IN ANOTHER WAY. 25,000 PERMITS TO GRAZE 8 MILLION CATTLE AND SHEEP ARE IN FORCE. PRINCIPALLY IN THE WEST THROUGH WISE USE THE FOREST RANGE WILL CONTINUE TO PRODUCE FORAGE & MEAT FOR GENERATIONS TO COME.



WISE USE OF RANGE REDUCES EROSION AND FLOOD DAMAGE

TAKE A SUN-O-RAMA HOLIDAY TOUR NOW
NO SUN - NO PAY! HOTEL ROOM IS FREE ANY DAY THE SUN DOESN'T SHINE... SEPT. THRU DEC., 1955

7 wonderful days
6 romantic nights
from **\$24.00**

Rate per person, double occupancy, April 15 thru December 31, 1955.

Your Florida Dream Vacation!

Florida is most enjoyable during the Fall Season when the air is refreshingly crisp but not cold. Many tropical flowers are in bloom and a new scenic wonderland of beauty is everywhere. All of this PLUS these extras: air-conditioned accommodations, bathing at famous Sarasota Beach, golfing on Bobby Jones' 27-hole course, Jade Swimming Pool, shuffleboard, sightseeing tours, planned entertainment, "get-acquainted" cocktail party, Horn's Cars of Yesterday, Cruise on Gulf of Mexico through jewel-like Florida Keys—all at no extra cost! And remember, any day the sun does not shine (Sept. through Dec.) your hotel room is free!

FOR RESERVATIONS, see your local TRAVEL AGENT, or WRITE, WIRE, or PHONE:

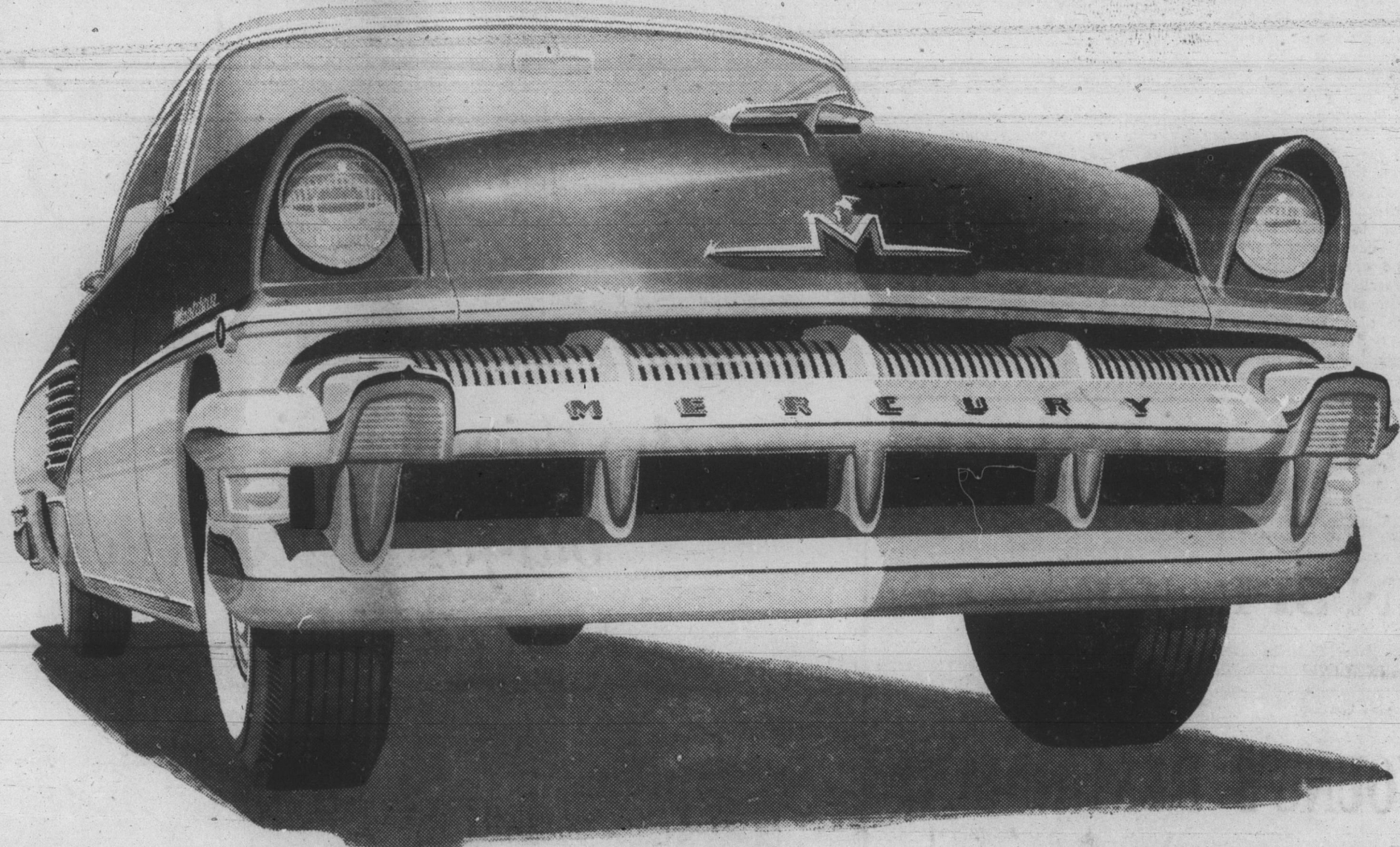
NEW SARASOTA TERRACE Hotel
Tel. Ringling 2-5311, P. O. BOX 1720 — Sarasota, Florida. "World's Finest Beach"

NEW SARASOTA TERRACE Hotel
SARASOTA, FLORIDA

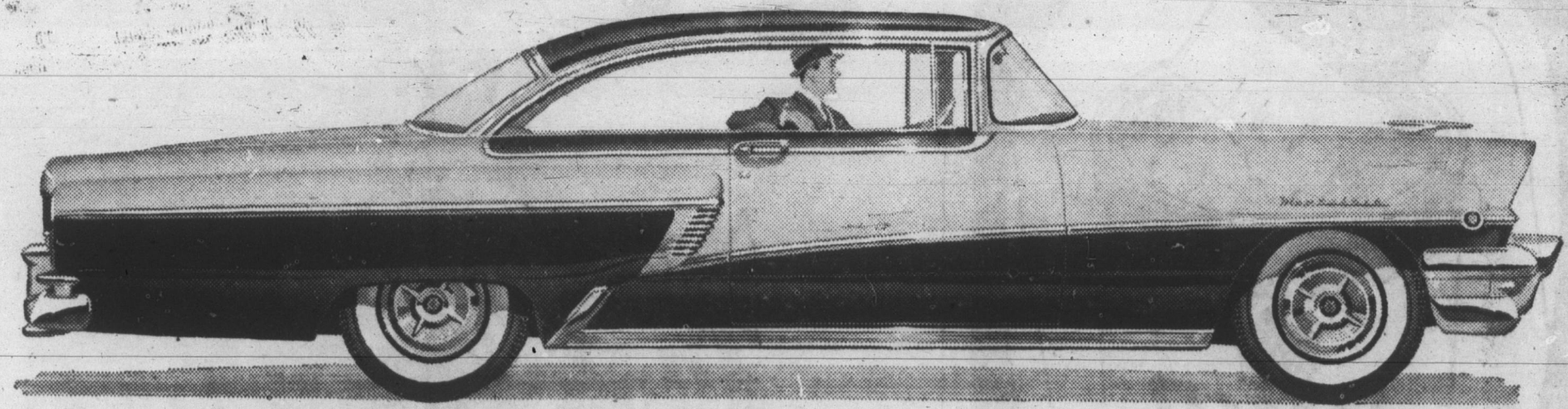
LOW PACKAGE RATES
Double occupancy, including minimum air fare from cities listed:

ATLANTA	\$ 72.02
BOSTON	135.42
CHICAGO	122.02
NEW ORLEANS	82.02
NEW YORK	114.42
PHILADELPHIA	115.32
WASHINGTON, D.C.	99.02

DRIVE-YOURSELF
Special low rate \$29.95
Includes 100 miles
FREE DRIVING. New Ford or Chevrolet
SAVE \$5.00
This adv. worth \$5.00 on purchase of Sun-O-Rama Tour at Travel Agent or this hotel to Dec. 31, 1955.



For 1956 **THE BIG M**



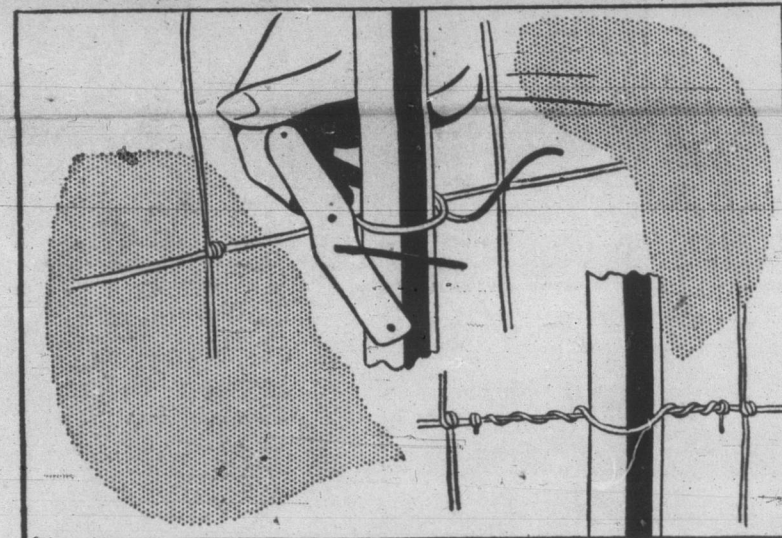
New 225-horsepower Montclair hardtop coupe—one of 12 models in 3 series.

LOOKS BIG...FEELS BIG...ACTS BIG...IS BIG!
THE BIG BUY FOR 1956

- Great new 210- and 225-hp SAFETY-SURGE V-8 engines
- New high in usable power—faster getaway than ever
- More styling innovations, new freshness everywhere
- 12 big models, new fleet of low-silhouette hardtops
- Brilliant new Flo-Tone color styling, illustrated above
- New smartly-tailored, color-matched interiors
- New Safety-Engineered features including safety door locks, impact-absorbing safety steering wheel, safety seat belts*, padded instrument panel* and padded sun visor*

ON DISPLAY TODAY...THE BIG MERCURY
BANKS-YOUNG MOTOR CO.
PHONE 17 BURNSVILLE, N. C.

FENCE LINES



A piece of strap iron, bent and drilled as shown, will make twisting easy when you tie woven or barbed wire to fence posts. The twister not only does a neat, tight job—it also saves your fingers.

Feed Sows for Low-Cost PIG GAINS!

Feeding sows "SQ" SOW & PIG meal helps get lowest-cost pig gains. Sows farrow more and bigger pigs and give lots of milk those first few weeks.

LOADED WITH SPECIAL VITAMINS!
COMES IN Handy 50-LB. BACK-SAVER BAGS

GET 9 & 10 PIG LITTERS of pigs averaging 3 lbs. or more at birth. Feed "SQ" SOW & PIG during gestation... build big, husky pigs. Big profits start with big litters!

WEAN PIGS SOONER & HEAVIER by giving them a fast start on lots of good nursing. "SQ" SOW & PIG is specially formulated to build pigs, make sows milk heavily and stay in good condition.

JOHNSON & COMPANY
BURNSVILLE, N. C.
PRESNELL & PRESNELL
NEWDALE, N. C.

Researched-Feeds for the Southeast