

ROOM FOR ONE MORE

By Fran Pachter

RANDY and Jo Lawrence enjoyed a happily married life, enjoyed all the more because their union had been blessed with five boys. Both having been orphans, their wildest dreams had been realized getting a home and a family. Jo had kept well hidden, her disappointment over there not being a little girl among her brood. It was not until her club visited the orphanage that the idea struck her.

In her direct way, she broke the news at dinner. "How would you fellows like a sister?" Six heads lifted and gaping mouths greeted her announcement.

Randy gave her an incredulous stare and blurted out "Jo, it's not true!"

"Not the way you think, I want to adopt a child," Jo laughed. Jim, spoke for the boys. "You're kidding. We're crowded now, besides, who'd want a girl?" A chorus of approval from his brothers agreed with him.

Dinner over and the boys in their rooms doing homework, Jo and Randy settled themselves in the living room.

Jo hoped Randy would say something. He questioned, "Jo, this means a lot to you, doesn't it?"

Jo nodded, "It hit me out of the blue. You should see those kids, I wanted to take them all."

Randy's expression told her that he too remembered. The parade of people looking them over, each child hoping for a home and family. Randy and Jo had never been chosen, each had stayed there till grown. It had been their shared need for each other that nourished love through childhood into marriage.

Jo spoke, "Don't you see, we know that life. I feel it's our duty to take one of them. It would wash away those bitter years."

"The boys are against it and we don't have too much room," Ran-

dy was running true to form, but Jo had met up with solid male opposition before.

"Let's get permission for them to visit. It might change their attitude. Let's face it, kids all have a selfishness about sharing. It might do them good to see those orphans."

Randy, knowing Jo's die-hard policy, said, "Set it up and we'll see how they react."

Jo encountered no opposition as her presidency with the woman's club carried enough weight and consent was readily given. The kids were pessimistic but Jo overrode their objections and they found themselves at the orphanage.

Turning them loose among the children, the Lawrences paused in the matron's office, explaining their desires to overcome the boys' objections.

Jo looked up to see Jim had returned with his brothers lined up behind him. Stevie, ten ran to his mother, bursting into tears, saying, "Mommy, they make me feel bad. We've got so much and they ain't got nothing."

Jo felt a pang of remorse, seeing her carefree boys, sober with their awakening to a world they'd never knew existed.

Jim, endeavoring to be nonchalant said, "It'll be hard picking. They are all nice kids."

Jo and Randy entered the line-up room. It hadn't changed, or was it that all orphans had the same look? Two children stood out from the rest, twins, a boy and girl, conspicuous in their desire not to be separated. Time flew backward for the Lawrences.

Jo knelt at eye level before the frightened children. "Would you like to come and live with us?" The little girl stared hard at Jo, disbelief on her face. "Do you mean both of us?"

Jo nodded and her arms encircled the two. Looking up she saw tears in the eyes of a man and five blushing boys.

The Light refreshment



Buy it by the carton

PEPSI COLA
BOTTLING CO.
SPRUCE PINE, N. C.

NOTICE OF SALE UNDER DEED OF TRUST

NORTH CAROLINA
YANCEY COUNTY
Under and by virtue of the power of sale contained in a Deed of Trust executed by Clarence Ray, and wife, Marilyn Ray, to the undersigned, as Trustee for The Northwestern Bank of Burnsville, North Car-

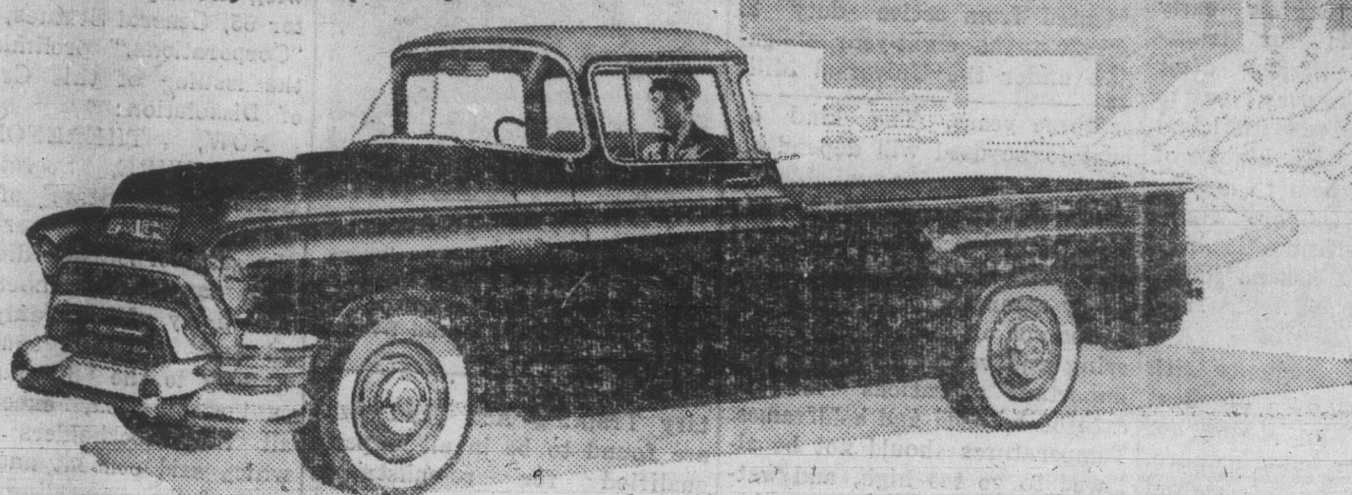
olina, on December 30, 1952; and default having been made in the payment of the same, the undersigned Trustee will, at the Court House door in Burnsville, North Carolina, at 10:00 o'clock A. M., on January 28, 1956, sell for cash, to the highest bidder, the following described tract or parcel of land in South Toe Township, Yancey

County, North Carolina: BEGINNING at a birch just below Clarence Ray's house and runs N. 47 1-2 degrees E. 430 feet to a stake on a ridge; thence S. 53 1-2 degrees E. 300 feet; S. 43 degrees E. 304 feet to a stake in Clyde Huskins' line; thence with said line about N. 80 degrees W. 215 feet to a stake; thence N. 9 degrees E.

The fossils of a "shovel-tusked" mastodon, not known before in western North America were uncovered from the Clarno, Oregon fossil beds.

87 feet to the BEGINNING, containing 4 acres, more or less. This December 27, 1955. Bill Atkins, Trustee.

Jan. 5, 12, 19, 26



It tells the world you've arrived

A BLUE CHIP GMC helps its owner achieve the prosperity it advertises. Its operating costs are low because the 155-h.p. V8 engine's a fuel miser—its Hydra-Matic Drive's a maintenance shrinker—its rugged construction's a life stretcher. Come in and see one!

*Hydra-Matic standard on many models; optional at extra cost on some others

STYLES & COMPANY

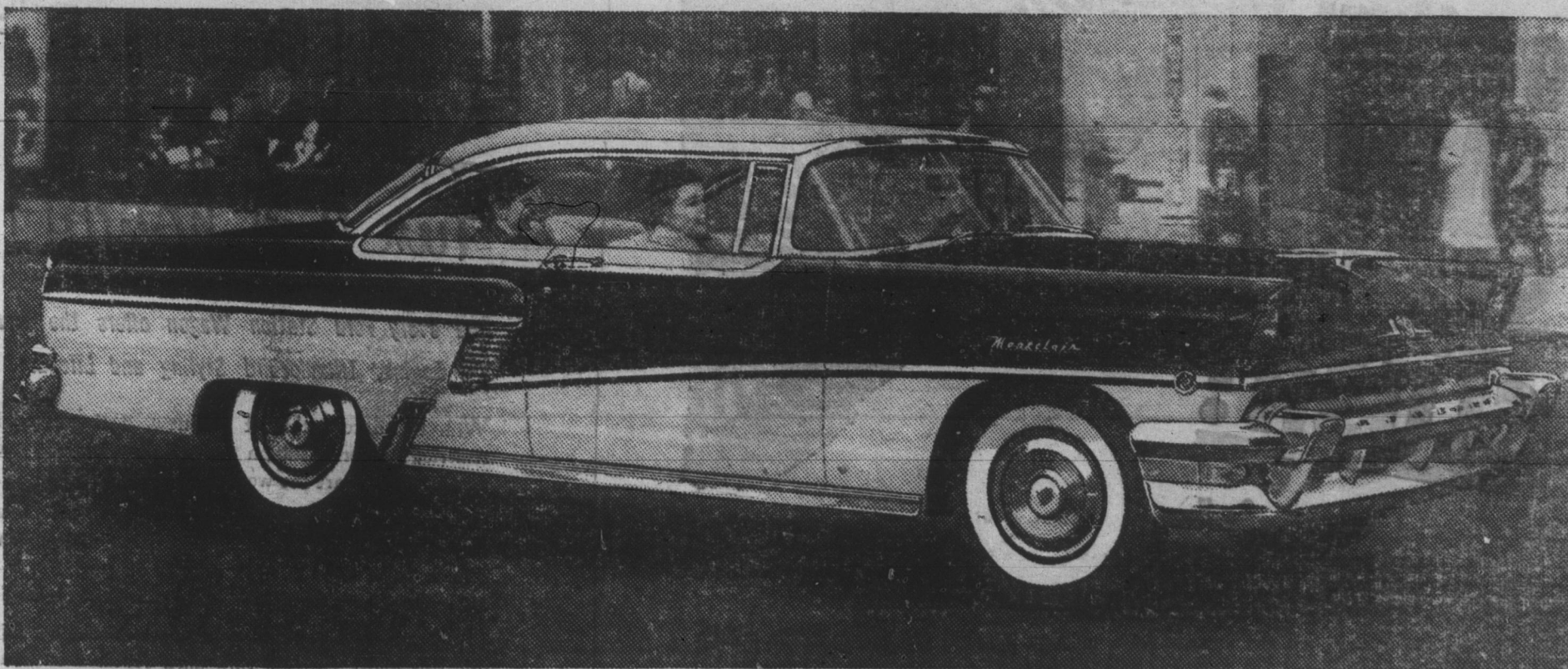
SOUTH MAIN STREET

BURNSVILLE, N. C.

See us, too, for Triple-Checked used trucks

ONE 5-MILE DRIVE WILL PROVE IT

Your driving is easier—you feel safer—in THE BIG M



The stunning Mercury Montclair 2-door hardtop with distinctive low profile and Flo-Tone color styling.

Easier riding and handling on sharp turns—new comfort on bumpy roads—widest choice of safety features in its field help explain why THE BIG M is the big buy for 1956.

Riding is so much better than reading. That's why we invite you to take a demonstration drive in our BIG M.

Then you'll feel THE BIG M's reflex action firsthand—how ball-joint front suspension adjusts itself instantly to rough roads, ruts, and curves.

And you'll experience the reflex-action response of THE BIG M's new SAFETY-SURGE V-8 engine—how it takes the tension out

of passing, makes hill-climbing as effortless as breathing.

You'll discover the new peace of mind provided by THE BIG M's new Safety-First Design. For this year Mercury offers 10 new safety features, including the only impact-absorbing steering wheel in its field.

So see us for a test ride. Compare our prices and you'll find that THE BIG M is as easy to own as it is to drive.

BIG 4 OF THE BIG M

- 1 NEW REFLEX-ACTION PERFORMANCE. THE BIG M responds to your every command—go, stop, climb, pass—quick as an athlete's reflex. On all-roads and curves, Mercury adjusts instantly, automatically, for your ease and comfort.
- 2 BIG M BEAUTY. New long, low profile. Distinctive Flo-Tone color styling. Clean-lined beauty for young-minded people.
- 3 NEW SAFETY-FIRST DESIGN. Widest choice of safety features; impact-absorbing steering wheel, safety door locks at no extra cost; padded instrument panel, safety belts, optional.
- 4 PROVABLE VALUE. Low price when you buy—low cost while you drive. For 4 years best resale value in its field. Many dividend features for greater performance and convenience.

GOOD EATING

IN SPRUCE PINE

SIZZLING STEAKS

IT'S

COUNTRY HAM

YOUNG'S RESTAURANT

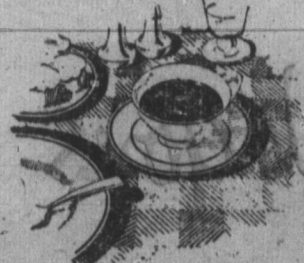
LOWER MAIN STREET

CLEAN-COOL COMFORTABLE



It's an American Custom—
...the NEWS with a cup of good coffee

And when you think of good coffee, you can't help thinking of JFC Special. With every sip it's new because it has that unmistakable flavor character that comes only from its 100% Premium flavored coffees.



"The Best Part of the Meal"

For 1956—the big move is to THE BIG MERCURY
BANKS-YOUNG MOTOR COMPANY
PHONE 17 BURNSVILLE, N. C.