

**RICE & SALMON LOAF**



- 1/2 cup butter or margarine
- 1/4 cup minced onions
- 1/2 cup flour
- 1 teaspoon salt
- 1/4 teaspoon paprika
- 2 cups milk
- 1 1-pound can red salmon
- 2 cups cooked rice
- 1 tablespoon lemon juice
- 3 eggs, slightly beaten

Cook onions in butter until soft. Stir in flour, salt, and paprika. Add milk all at once and stir until smooth. Cook until thickened, stirring occasionally. Remove from heat.

Drain salmon; remove skin and bones. Flake. Fold into sauce, together with rice and lemon juice. Stir in slightly beaten eggs.

Line bottom of 8 1/2 x 4 1/2 -inch loaf pan with waxed paper. Pour in salmon-rice mixture. Sprinkle top with paprika, if desired. Set in pan of hot water.

Bake in moderate oven (350° F.) about one hour, or until firm. Let stand about 5 minutes before unmolding. Serve with a medium cream sauce, flavored with a little mustard, horseradish, and chopped hard-cooked eggs.

Yields six servings.

**Stray Dogs Menace To Livestock Industry**

At the Agricultural Council meeting recently, the problem of the threat of stray dogs to the livestock industry was discussed. According to Mr. Dillingham, stray dogs are threatening the entire sheep and livestock industry in Yancey County. Recently, farmers have reported losses of several hundred dollars in sheep, cattle and poultry, as well as tobacco beds, shrubbery and gardens. Stray dogs and cats are also destroying the wildlife in the county.

In addition to the economic loss, Mr. Dillingham said, there is the danger of rabies. All dogs are supposed to be listed for taxes and vaccinated for rabies.

Owners of valuable hunting dogs, pets and other useful dogs, along with sheep and other livestock producers are holding meetings to plan ways and means of saving valuable animals from being destroyed by the stray dogs. Some counties have insurance programs, dog wardens, or both.

The county commissioners have offered to spend the money they have been paying in losses into insurance for sheep, provided the growers agree to collect from only one source (the insurance co.) when they have a loss.

If the losses continue at the present rate, Mr. Dillingham said, insurance will be out of the question.

**MONTHLY REPORT**

**NORTH CAROLINA YANCEY COUNTY**

I, Evelyn H. Pate, Register of Deeds and Clerk to the Board of County Commissioners for Yancey County, North Carolina, do hereby certify that the foregoing is a true and exact copy of the minutes of the Board of County Commissioners for the months of February and March, 1956.

Feb. 6, 1956—Poor Fund \$374.71  
Debt Fund ..... \$2,990.54  
(Bonds bought in the amount of \$3,000.00)

General Fund ..... \$4,228.88  
March 5, 1956—Poor Fund \$243.35  
Debt Fund ..... \$47,874.97  
(Bonds-Special Bldg. Refund and Interest)

General Fund ..... \$4,693.94  
Witness my hand and official seal of Office this the 19th day of March, 1956.

Evelyn H. Pate, Register of Deeds, Yancey County, N. C.

**STATEMENT OF FINANCIAL INFORMATION**

Yancey County's total outstanding indebtedness June 30, 1955 was \$664,874.97, paid since June 30, 1955, \$85,874.97, reducing the total indebtedness to \$579,000.00.

L. M. Robinson, County Accountant.

In each of our wars, including the Revolution, the skills of American clockmakers have been used to produce essential military equipment.

**ANNOUNCEMENT**

I wish to announce my candidacy for Register of Deeds subject to the will of the Democratic voters of Yancey County in the Primary Election of May 26, 1956.

Your support and efforts in my behalf in the forth coming Primary will be greatly appreciated.  
**TROY BOONE**

**ANNOUNCEMENT**

In response to many requests I am an active candidate for the office of Chairman of the Board of County Commissioners of Yancey County, subject to the will and pleasure of the Democratic Primary May 26, 1956. I solicit your vote and hearty support.  
**W. B. ROBINSON**

**SATURDAY IN SUBURBIA**



Make a Date with an Oldsmobile

Come in and ROCKET 'ROUND THE BLOCK (OR 'ROUND THE TOWN IF YOU LIKE).

SEE YOUR NEAREST OLDSMOBILE DEALER

Latest French Make-up Secret

**COTY**

"air spun" face powder with NEW French Formula LIQUID MAKE-UP

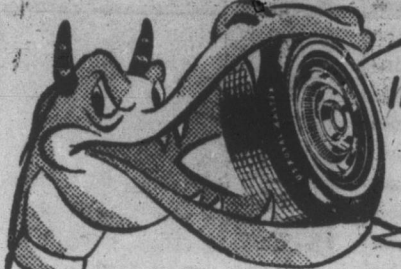
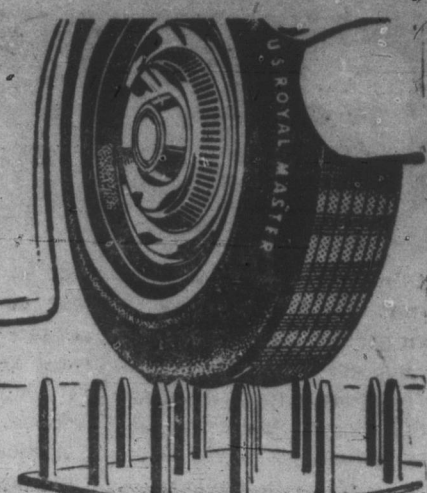
FRENCH FORMULA contains LECITONE\* Vital ingredient essential to the life of every skin cell. \*derivative of lecithin and cephalin

"air spun" face powder . . . 1.25  
French Formula foundation .85 both for 1.50 (travel size) plus tax  
VALUE 2.10

**POLLARD'S DRUG STORE**

Now—STEEL and NYLON combined to produce

**THE MOST INDESTRUCTIBLE OF TIRES!**



INDESTRUCTIBLE? YOU SAID A MOUTHFUL!

For the first time—you can own a tire with fine flexible threads of steel between tread and nylon body. This "Safety Crown" makes the new U.S. Royal Master practically indestructible in the vital tread area. And it gives you a lifetime of safety from road hazards!

**NEW Safety Age U. S. Royal Master**

in your choice of COLOR at no extra cost!



**Royal Tire Service**  
PHONE 135 BURNSVILLE, N. C.  
Expert Wheel Balancing

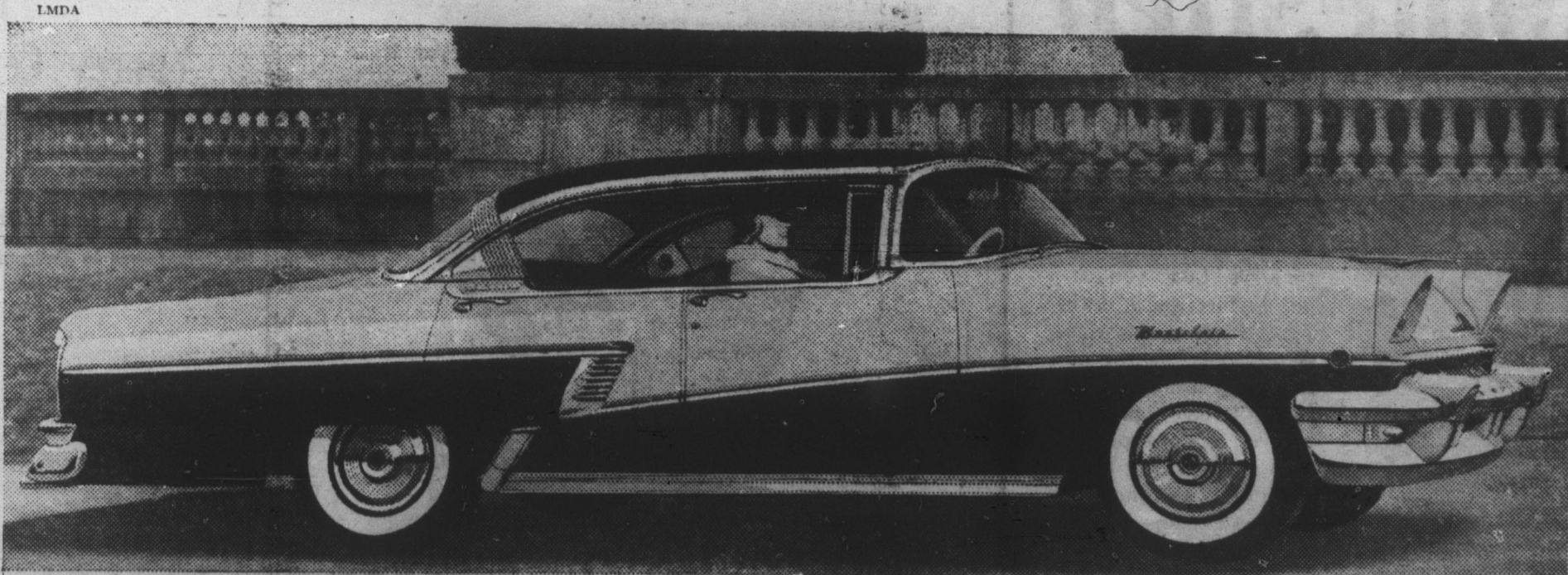
**Tri-County Tire & Recapping Co.**  
SPRUCE PINE, N. C.

**U.S. ROYAL TIRES**  
MARION, N. C.

Announcing a special saving on

**THE BIG M**

for drivers of the low-price 3



NEW BEAUTY, NEW POWER are yours when you move up to Mercury. Shown above is the Montclair Phaeton, most beautiful 3-door hardtop of all. Also available in Monterey, Custom, and Medalist series.

ALL THIS WEEK WE'RE UPPING OUR ALLOWANCES ON LATE MODELS OF THE LOW-PRICE 3 TO A NEW RECORD HIGH JUST TO INTRODUCE YOU TO THE BIG M'S SIZE, POWER, AND PERFORMANCE.

**OFFER LIMITED! COME IN NOW!**

**BIG M PRICES NOW START BELOW 41% OF ALL MODELS IN THE LOW-PRICE FIELD\***

And you get all this • New 312-cubic-inch SAFETY-SURGE V-8 engine • 4-barrel carburetor on all models • Improved ball-joint front suspension • New Safety-First Design with impact-absorbing safety steering wheel • Record-famous resale value.

More than ever, your big buy is—  
**THE BIG MERCURY**

**BANKS-YOUNG MOTOR CO.**  
PHONE 17 FRANCHISED DEALER NO. 1159 BURNSVILLE, N. C.