



**GARDEN TIME**  
M. E. Gardner  
N. C. State College

Jonquils are blooming in Raleigh. This hardly seems possible with the wet, cold weather we have experienced all winter. While we have had bad weather, we have much to be thankful for when we read about one crop disaster after another in Florida. If we look around us we can always find someone in worse condition than we are. I wonder why we gripe so much.

The days are getting longer which means that "Old Sol" is climbing higher in the heavens and asserting his authority, minute by minute, each day. Don't let him catch you napping. Your vegetable fruit and flower gardens will call for careful planning and your lawn, trees and shrubs will need attention.

I have already given some suggestions about pruning and spraying apples, peaches, raspberries and grapes, and starting certain early vegetables for transplanting. Hope these additional suggestions might help.

Prune your bush type roses just before growth starts in the spring. Animal manures, either fresh or dehydrated, are excellent for roses. A good mulch will conserve moisture and help control weeds. Prune your climbers, rather heavily, after they have bloomed. Paul Scarlet is a good example. Varieties like Dr. Van Fleet should have old wood removed every three or four years, or when they get too large for the trellis.

It will soon be time to fertilize your lawn. I usually apply a complete fertilizer, in the early spring, and follow with frequent dressings of nitrogen. About five pounds of complete fertilizer, such as an 8-8-8, should be applied per 1,000 square feet

of lawn area.  
If some of your shrubs, such as abella, ligustrum and crepe myrtle need pruning and shaping, be easy on them. A little judicious pruning, when needed, is much better than heavy cutting at one time.

**CENSUS BUREAU TO COLLECT INFORMATION ON WORK EXPERIENCE**

Information on the work experience of the Nation's population during 1957 will be collected by means of special questions to be asked in the February Current Population Survey, according to Supervisor Joseph R. Norwood of the Census Bureau's regional office at Charlotte, N. C., which will participate in the survey.

The special questions will provide information on the number of persons who worked during the year, number of weeks worked, amount of time lost during the year because of unemployment and disability, and related items. Information on farm wage workers will be collected also in the February Current Population Survey. This will show the number of persons who did farm work for cash wages during the past ten years and how many of these were migratory workers.

The special questions on work experience will be in addition to the regular inquiries on employment and unemployment which are asked each month in 330 areas throughout the country. Information will be collected locally during the week of February 17 by Mrs. Edna L. Harmon of Asheville, N. C.

SUBSCRIBE TO THE RECORD



**THE WORLD OUTDOORS**

PLEASURE boating is becoming more and more the nation's top family sport. This is well reflected in a recent report which indicates that America's boat-for-fun fleet has nearly tripled in the last 10 years and increased by some 345,000 small craft during 1957.

Contrast this to the picture of some fifty-odd years ago. In the year 1904, for instance, there were only 15,000 recreational craft on all American waterways. By 1930, this total had grown to 1.5 million and by 1947 had reached 2.4 million. Between 1947 and 1957, the recreational fleet almost tripled, reaching the present level of 7,071,000 pleasure craft.

The fact that boating is big business is reflected in the fact that the dollar volume on purchases on the retail level amounted to \$1,912,000,000 last year, up 21 percent over 1956. This includes expenditures for new and used boats, engines, accessories, safety equipment, fuel, insurance, docking, launching, storage and other miscellaneous expenses.

More than one-fifth of the 1957 total is accounted for by purchases of new outboard motors, outboard boats and boat trailers. The report also took note of the fact that the boating-conscious American public spread 9.8 million gallons of marine paints and varnishes during the past year. American pleasure craft used up some 397 million gallons of gasoline and more than 19 million gallons of lubricating oil.

Looking over the figures, it appears that there is now one pleasure boat in use for every 24 Americans. And all the boats are not necessarily big cruisers or power jobs. It is estimated that there are some 2,375,000 row boats, canoes, and similar type craft in use.

**ANNOUNCEMENT**

The County Chairman of the Yancey County Republican Executive Committee has called:

(a) A Meeting of all precincts on Friday, 28 February, 1958, at 8:00 o'clock P. M., at the polling place.

(b) A County Convention on Saturday, 1 March 1958, at 8:00 o'clock P. M., at the Courthouse.

At the precinct meetings, delegates to the County Convention will be selected. The delegates of the County Convention will select delegates to the State and Congressional Conventions, nominate candidates for County offices and select the County Executive Committee.

All qualified Republican voters are urged to participate in these meetings.

ELLIS MOODY, Secretary  
Feb. 18-20-57

**ADMINISTRATRIX NOTICE NORTH CAROLINA YANCEY COUNTY**

Having qualified as Administratrix of the Estate of Harvey T. Penland, deceased, late of Yancey County, this is to notify all persons having claims against the Decedent to exhibit the same to the undersigned Administratrix at her home at Rt. 3, Burnsville, N. C., on or before the 10th day of February, 1958, or this notice will be placed in bar of their recovery.

All persons owing the Estate will please make immediate payment.

This 10th day of Feb. 1958.  
Hattie Penland, Administratrix of the Estate of Harvey T. Penland, Deceased.  
Feb. 13-20-27, March 6, 13, 20

**Attention Hemorrhoid "Pile" Sufferers**

A Wonderful New Discovery Just Put On The Market. An ointment that has been used for the past two years by a prominent Mt. Holly, N. C. doctor who states "During the past thirty-seven years of general practice I have used all the well known and accepted remedies for the relief of Hemorrhoids—without a doubt the formula known as SUTHERINE gives the most satisfactory relief that I have ever used." SUTHERINE is especially recommended for the soothing relief of pain and itching in Hemorrhoid (piles). In many cases bleeding has been stopped. Ask for SUTHERINE at all drug stores.

**NOTICE OF SALE UNDER DEED OF TRUST**  
By virtue of the power of sale contained in a certain deed of trust executed by Hanson Hughes and wife, Ruby Hughes, dated July 24, 1956, to secure the indebtedness therein named, and default having been made in the payment of the same and the Trustee therein named having been requested to exercise the power of sale therein, the undersigned Trustee will on the 13th day of March, 1958, at 11 o'clock A. M., at the court house door in Burnsville, N. C., offer for sale, for cash, to the highest bidder the following described real estate, situate in Crabtree Township, Yancey County, N. C., and bounded as follows:  
Adjoining the lands of John Gurley and Lucy Phillips: Beginning on a dogwood on the north bank of the Cove Field Branch and runs north 55° east down and with said branch 40 poles to forks of Low Gap Branch; thence up Low Gap Branch a north west course with said branch 33 poles to a poplar in Low Gap Branch; thence a south west course 28 poles to the beginning. Containing 3 acres, more or less.  
Together with all heating, plumbing, cooling, air conditioning and lighting fixtures and equipment now attached to or used in connection with the said real estate.  
This the 7th day of Feb. 1958.  
Mary C. O'Donnell, Trustee  
Charles Hughes, Attorney

**Announcement**  
To All Voters of Yancey County:  
After careful thought I have decided to be a candidate for Sheriff of Yancey County. Subject to the Primary to be held in 1958.  
If elected I will give you, the people of Yancey County, my full time as sheriff. I will be available at all times to serve you in any way a sheriff can.  
Your vote will be appreciated in the Democratic Primary.  
**LOVE FOX**

More People Buy  
"The Best Part Of The Meal"  
**JFG SPECIAL COFFEE**

WRITE FOR NEW JFG PREMIUM CATALOG in Full Color. Print your name and address on postal card and mail to: Premium Dept., JFG Coffee Company, Jackson Ave., Knoxville, Tenn. SAVE JFG COUPONS... and save money on many valuable articles for your home and family.

dependable quality! sensible price!  
**TIRE VALUE SECOND TO NONE**  
KELLY PRESTIGE  
\$16.40 6.70-15 TUBE-TYPE \$18.60 6.70-15 TUBELESS  
PLUS TAX AND YOUR RETREADABLE TIRE  
look for the sign of WORRY-FREE DRIVING  
KELLY Springfield TIRES  
DEPENDABLE FOR 64 YEARS  
Factory fresh! Bursting with power! STARTS STRONGER! LASTS LONGER!

**Royal Tire Service**  
Tire Recapping.  
Expert Wheel Balancing  
Phone MU 2-2421 BURNSVILLE, N. C.

Save \$50.00 ON SPECIAL INTRODUCTORY PRICE!

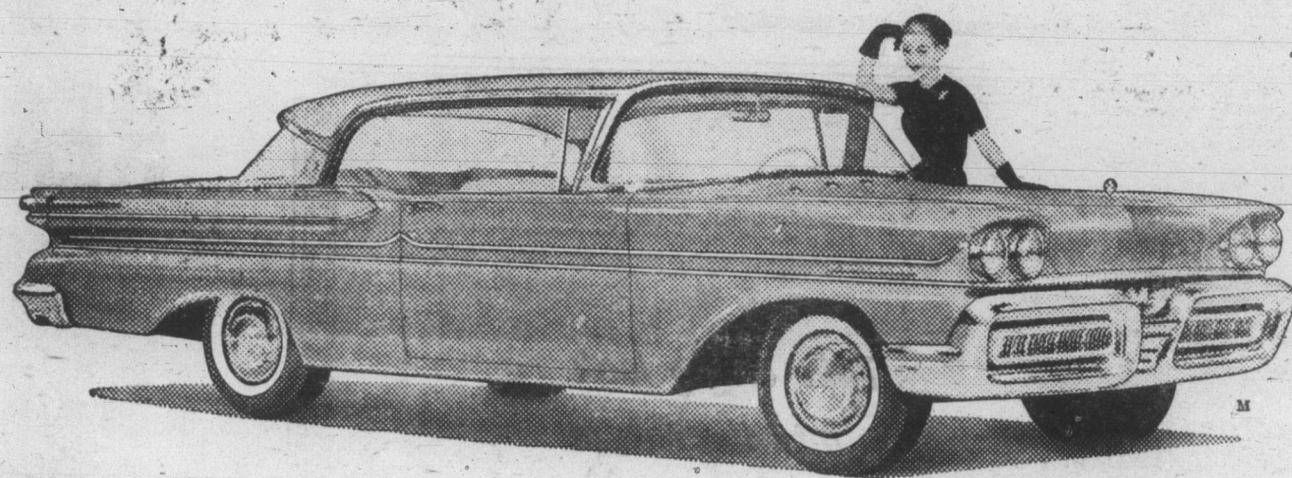


- Luxury Features Galore!**
- HUGE 61 lb. FROZEN FOOD STORAGE
  - BOLD NEW "BUILT-IN" LOOK
  - FULL HANDICAP STORAGE
  - Full-width insulated chill tray
  - Huge 32 lb. porcelain crisper
  - Butter Keeper • 2 ice trays
  - Tall bottle zone
  - Adjustable shelves in door
  - Beautiful color-styled interior
  - New safety-latch door

Only limited number at this price! Come in today!

We carry a Complete Line of Norge Appliances:-- Freezers-- Refrigerators Washers -- Stoves  
Come in and Look Over Our 1958 Models  
**J. F. ROBINSON**  
General Merchandise  
CANE RIVER, N. C.

IT'S A FACT! MERCURY IS THE PERFORMANCE CHAMPION FOR 1958!



Come in and **COMPARE MERCURY WITH ANY CAR FOR PRICE...SIZE...PERFORMANCE**

**MERCURY PRICES START BELOW 42 LOW-PRICED-THREE MODELS\***

Mercury introduces a brand-new series with new low prices that make Mercury easier than ever to own. This full-size Mercury is big in everything but price. Up to 8.6 inches longer, 3.4 inches wider, 369 pounds heavier than low-priced-three cars. And it features a special gas-saving engine that squeezes extra mileage out of every drop of gas. See this new series now at Mercury showrooms.

**MERCURY LEADS ITS FIELD FOR ALL-ROUND BIGNESS INSIDE AND OUT**

And Mercury's ride is unsurpassed because no rival car has such a solid, road-smoothing combination of size and weight.

\*Based on a comparison of manufacturers' suggested list prices, using the lowest-priced Mercury 2-Door Sedan, not illustrated.

**MERCURY OUTPERFORMS THE HIGHEST-PRICED CARS**

Mercury offers the most horsepower (up to 360) of any car in America, except one costing almost \$1000.00 more—plus the most power-per-pound of any car. Equally important, you get more power from less gas. Truly, Mercury means the most for your money.

**GET YOUR FREE CAR BUYER'S GUIDE**

Brand new! Handy! Packed with official figures! Just turn the dial and you can compare leading cars in both the medium-priced and low-priced fields. Answers most-often-asked questions on wheelbase, width, height, weight, brakes, horsepower, torque and transmission. Stop in at our showroom for your free copy. Helps you get the most car for your money. No obligation.



**MERCURY** the Performance Champion for '58  
**BANKS-YOUNG MOTOR CO., Inc.**