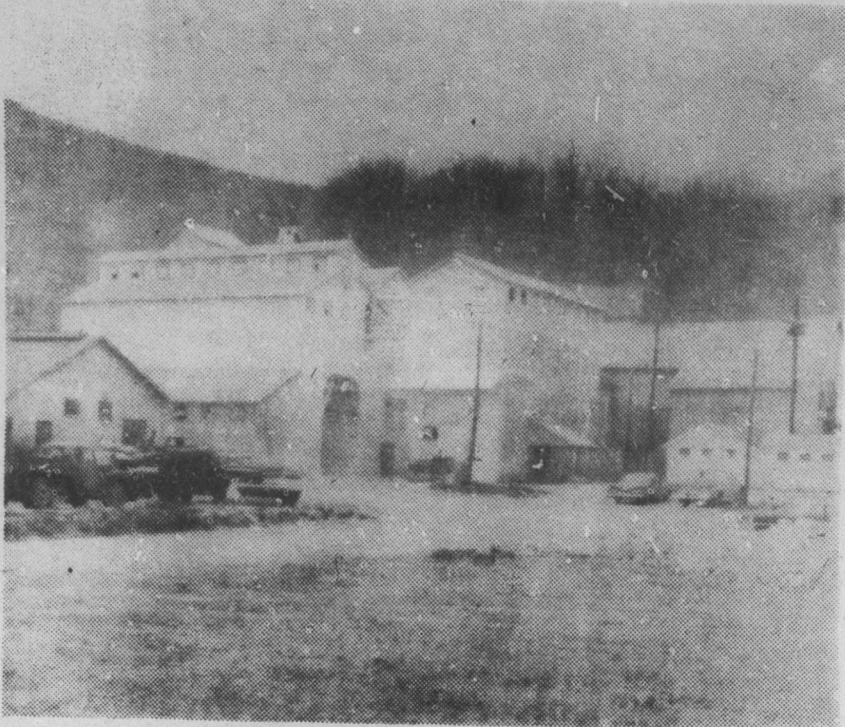
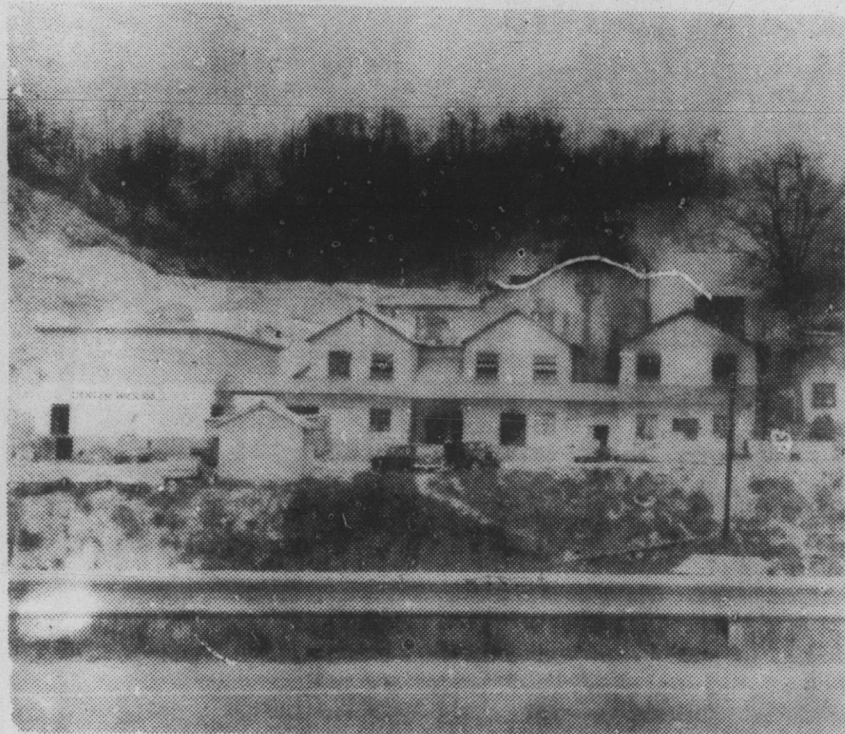


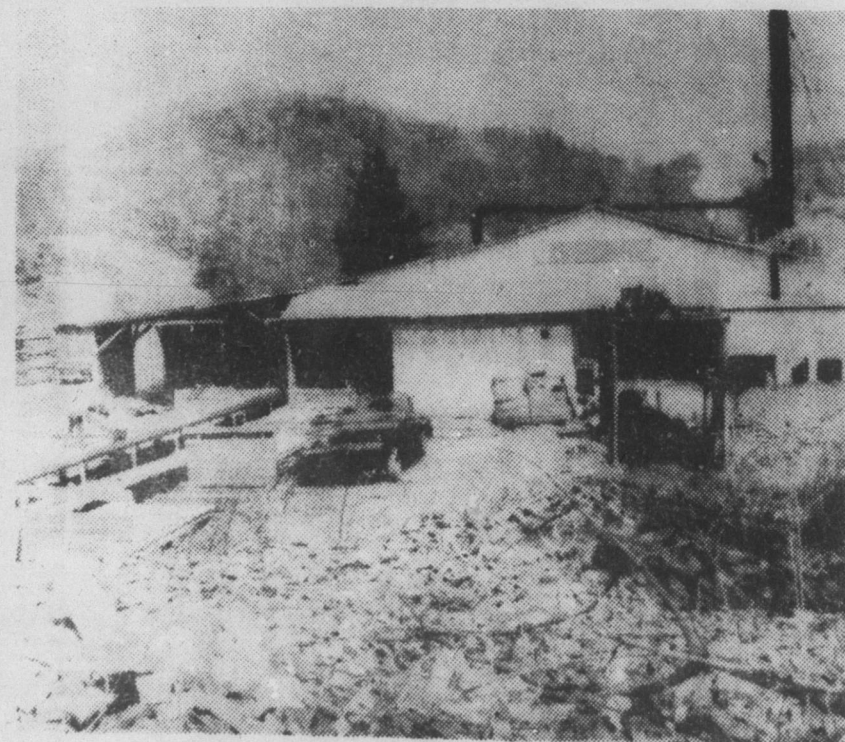
THE CHAMBER OF COMMERCE SALU



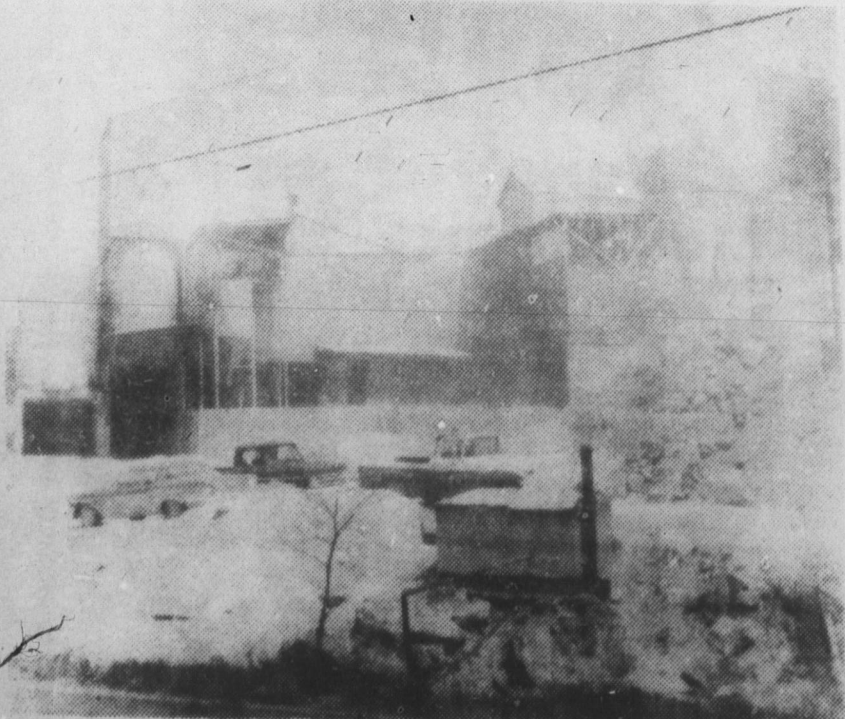
Feldspar Corporation Plant



Deneen Mica Co.



Penland Hardwood Lumber Co.



Olivine Mining Operation

Bowditch Plant Produces Dry-Ground Feldspar

The Feldspar Corporation plant at Bowditch is one of four plants operated by this company. Others are in Spruce Pine, Georgia and Connecticut. The Feldspar Corporation is a subsidiary of the Pacific Tin Company, whose operations include mining in the far east and in Brazil.

The Bowditch plant produces dry-ground feldspar—a very finely ground product in comparison with the relatively coarse feldspar produced by the flotation process. The Bowditch plant does most of its own mining, and employs about 60 men.

Dry-ground mica is used extensively by manufacturers of bathroom fixtures, china ware, enamel ware, insulators and welding rods, most of the customers being located in the north-east and mid-west.

Although large quantities of feldspar are used in glass manufacture, most of their supply is the product of the flotation plants, such as the Feldspar Corporation plant in Spruce Pine.

Deneen Mica, Old Mineral Operation

The Deneen Mica Company, located at Newdale, is one of the older mineral operations in the area. It has grown over the past twenty years from a small operation with five employees, to a thriving business with 45 employees, and marketing its products in all parts of the country and Canada. Bill Wilkins is manager of the operation.

The product of Deneen is dry-ground mica, used principally in the manufacture of roofing and as a lubricant in oil well drilling. The company mines most of the mica they process, and their operation uses the most modern methods of mica recovery. They operate a fleet of eight trucks, five used in connection with their mining operations, and three employed in delivery of their products to customers.

Penland Hardwood Operates Large Sawmill

This lumber company operates one of the largest sawmills in the county. As its name implies, it deals largely in hardwoods, although it saws some pine that is sold to local building supply firms.

Its supply of logs comes mostly from contract timbering crews. Including both the mill employees and the contract crews, there are about 25 total employees.

Almost all the lumber produced, nearly half of which is oak, is sold either to flooring manufacturers, or to the furniture industry.



PAM Sewing Operation

PAM Sewing Operation Newest In County

The newest industry in Yancey County is the Pam sewing operation located in what was formerly the roller skating rink in Micaville. About 45 women are now employed.

This business is a subsidiary of the Pacemaker Company of Hickory, well known for their "Old Hickory" line of jeans for men, women and children. This company also has a plant in Spruce Pine.

The Micaville operation, under the supervision of Marcella Hughes of Double Island, has

been rapidly expanding, and installation of a new line of sewing machines is under way. Ultimate full employment in the present building is expected to be about eighty. Some consideration is being given to doubling the size of the building, the future plans, however, depending on the volume of contracts received by Pacemaker.

Credit for bringing this industry to Yancey County goes to the Micaville Community Club, of which Rev. John Powers has been a moving spirit.

Olivine Mining Expanding Operation

This olivine mining and processing operation, located on the Mine Fork Road, has been rapidly expanding the past three years. Ray Wiseman is manager of the operation which now has fifteen employees.

Olivine has long been used as a refractory material, with uses such as the linings of industrial furnaces required to withstand exceptionally high temperatures. About three years ago, a greatly expanded market developed for finely ground olivine, used as foundry sand, and it is this market that the Mine Fork operation is now supplying. The olivine is mined, ground, and bagged, and shipped to foundries, mostly located in the north east.

Hassett Mining Produces Wet-Ground Mica

This operation, with two plants located on the South Toe, was recently was acquired by the Diamond Mica Company of Spruce Pine.

The Hassett Company produces wet-ground mica, a very finely ground product with a variety of uses. It is an important ingredient of joint cement, used extensively to fill the cracks between the sheets of gypsum wall boards used in "dry wall" house construction. The Hassett product is largely used for this purpose, although wet-ground mica is also much used in modern water-base paint.

Radio Station To Go On Air In May

Yancey County will get a voice of its own when a new radio station, located on the east side of Burnsville, goes on the air the first week in May.

When it hits the air waves, clear channel Station WKYK will beam its programming from sunrise to sunset at 1540 kilocycles with a strength of 1000 watts.

Part of the Wyatt Building, next to the Giny Lisa Shop, will house the radio station's offices and brand new transmitting equipment.

A tower, on the hill behind the Wyatt Building, will rise 207 feet to provide a strong signal that should be heard clearly in all parts of the county.

Calling itself "The Voice of Community Service," the new station plans to program variety music and will carry national and regional news from the wire services of the Associated Press.

Tentative plans call for an open house on Sunday afternoon, April 30, and for the station to begin operation on Monday, May first.

WKYK will be operated by Burnsville Broadcasting, Inc., Ardell Sink, President, and will be managed by Lee Childress.

Each day about 10,000 people in the underdeveloped countries die of illnesses caused by malnutrition. Contributions to the CARE Food Crusade, New York 10016, will help feed 40 million persons in these countries during 1967.