

# N.C. FARM NEWS

Based on reports from growers as of September 1, production of flue-cured tobacco in North Carolina is forecast at 838,977,000 pounds by the North Carolina Crop Reporting Service. A Tar Heel flue-cured crop of almost 839 million pounds would exceed 1966 production of 761,220,000 pounds by 10.2 percent, but fall short of the 1961-65 average production by 2.6 percent.

Average, yield and production forecast for North Carolina by types as compared with 1966 are as follows:

**Type II — (Middle and Old Belts):** Production 308,100,000 pounds from 158,000 acres with a yield of 1,950 pounds. The 1966 production was 176,120,000 pounds on 156,000 acres yielding an average of 1,770 pounds.

**Type 12 — (Eastern or New Bright Belt):** Production 413,700,000 pounds from 197,000 acres with a yield of 2,100 pounds. In 1966 a production of 394,020,000 pounds was harvested from 199,000 acres with a yield of 1,980 pounds.

**Type 13 — (Border Belt):** Production 117,175,000 pounds on 54,500 acres yielding 2,150 lbs. as against a 1966 crop of 91,080,000 pounds on 49,500 acres with a yield of 1,840 pounds.

**Type 31 — (Burley Tobacco):** Unfavorable weather conditions in the burley area decreased prospects and a yield of 2,100 pounds is now expected from 7,900 acres for a total production of 16,590,000 pounds. Last year 18,328,000 pounds were harvested from 7,900 acres with a yield of 2,320 pounds.

**UNITED STATES:**

The National flue-cured estimate is for a production of 1,280,402,000 pounds for an increase of 15.6 percent from the 1,108,074,000 pounds produced last year.

Burley production is forecast at 546,495,000 pounds — down about 7 percent from the 1966 crop of 586,672,000.

North Carolina's grain sorghum production is forecast, as of September 1, at 2,160,000 bushels — 37.1 percent above the 1,575,000 bushels produced in 1966, according to the North Carolina Crop Reporting Service.

Yield per acre is estimated at 48 bushels, 13 bushels above 1966 and 5.1 bushels above the 1961-65 average yield.

The acreage to be harvested for grain is estimated at 45,000 acres, unchanged from last year.

Based on reports from growers as of September 1, the 1967 soybean crop is expected to amount to a record 27,459,000 bushels, 32 percent above the previous record of 20,856,000 bushels produced in 1966, according to the North Carolina Crop Reporting Service. If this forecast materializes, the 1967 soybean production will almost triple the 1959 production of 9,396,000 bushels.

Yield per acre estimated at a record 27.0 bushels is 3.0 bushels above last year and 2.0 bushels above the previous record yield set in 1965.

This year's crop will be harvested from 1,017,000 acres as compared to 869,000 acres harvested last year. Seedlings of soybeans have been on a general upward trend for many years, and this year's acreage for beans is 17 percent above the previous record acreage harvested last year.

Corn production in North Carolina is forecast at a record 107,700,000 bushels, up 77 percent from the 60,975,000 bushels produced in 1966, according to the North Carolina Crop Reporting Service. Yield per acre is estimated at a record 75 bushels, up 30 bushels from the rather poor crop of 1966, and 5 bushels above the previous record yield net in 1965.

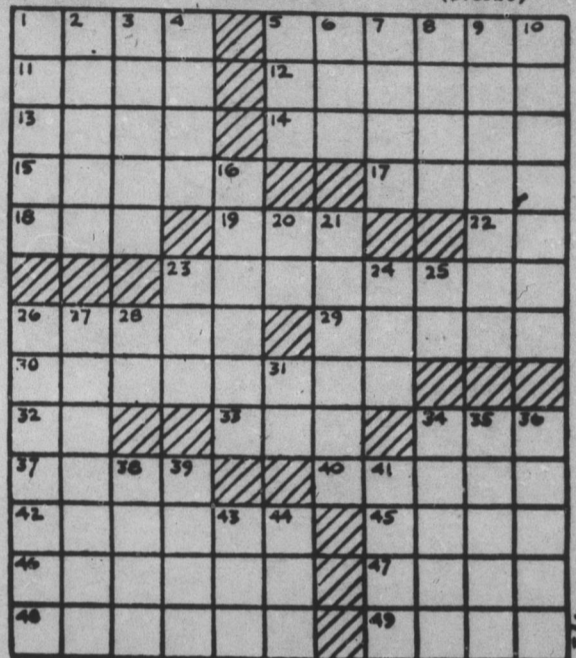
Farmers in the Coastal Plain Counties are now harvesting the early maturing corn.

## CROSSWORD

- ACROSS**
1. Grate
  5. The 50th state (U. S.)
  11. Body of Kaffir warriors
  12. Decks
  13. Useless
  14. Most painful
  15. Indian (Mex.)
  17. A college course (shortened)
  18. Sheltered side
  19. Concealed
  22. Part of "to be"
  23. Capital of Hawaii
  26. Oil of rose petals
  29. Man's name (poss.)
  30. A tip
  32. Sloth
  33. — Canals (U. S. and Can.)
  34. Overhead trains
  37. Wading bird
  40. Indian prince
  42. Stone of a drupe
  45. Mother of Apollo
  46. Vaporous
  47. Reverberate
  48. Disposition

- DOWN**
1. Competitor
  2. Astonish
  3. Petty malice
  4. Languish
  5. Owns
  6. Fuss
  7. Fish bait
  8. Region
  9. To place in office
  10. Neck of land (geog.)
  16. Exclaim simultan. eously
  20. At home

- ANSWER**
21. Medical man
  23. Head covering
  24. Place
  25. Biblical city
  26. Counter to
  27. Encomium
  28. Tantalum (sym.)
  31. Moth
  34. Put out
  35. Shaping machine
  36. Discharge
  38. Article
  39. Strike
  41. Malt beverages
  43. An uncle (dial.)
  44. War-god (Norse)



**NOTICE**

The B. B. Super Market Will Close On Wednesday  
Afternoons Beginning  
September, 20, 1967  
At 12:30 P.M.



**Nescafe Instant Coffee**

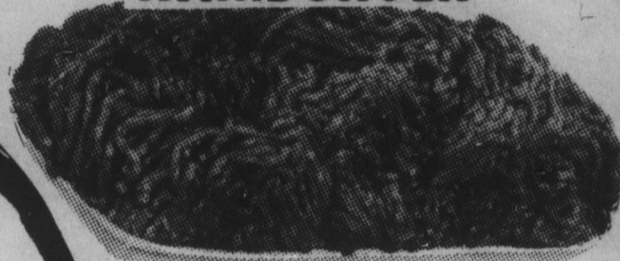
10 Oz. Jar

Only **\$1.29**

**Swifts Sweet Rasher Bacon**

Lb. **49¢** ONLY

**HAMBURGER**



2 Lbs.

**95¢**

**Lucks Pinto Bean**

303 Can

**19¢**

**Bananas**

1 Lb.

**10¢**

**Vanilla Cookies**

1/4 Lb. Bag

**25¢**

**Chef Spaghetti & Meat Balls**

15 Oz.

2 For

**49¢**

**Crisco Shortening**



3 Lb. Can

**79¢**

**Del Monte Pineapple Orange Drink**

46 Oz. Can

**29¢**

**Armour Treet**

12 Oz.

**49¢**

ONLY

Thursday-Friday-Saturday

**B & B SUPER MARKET**

Burnsville, N.C.