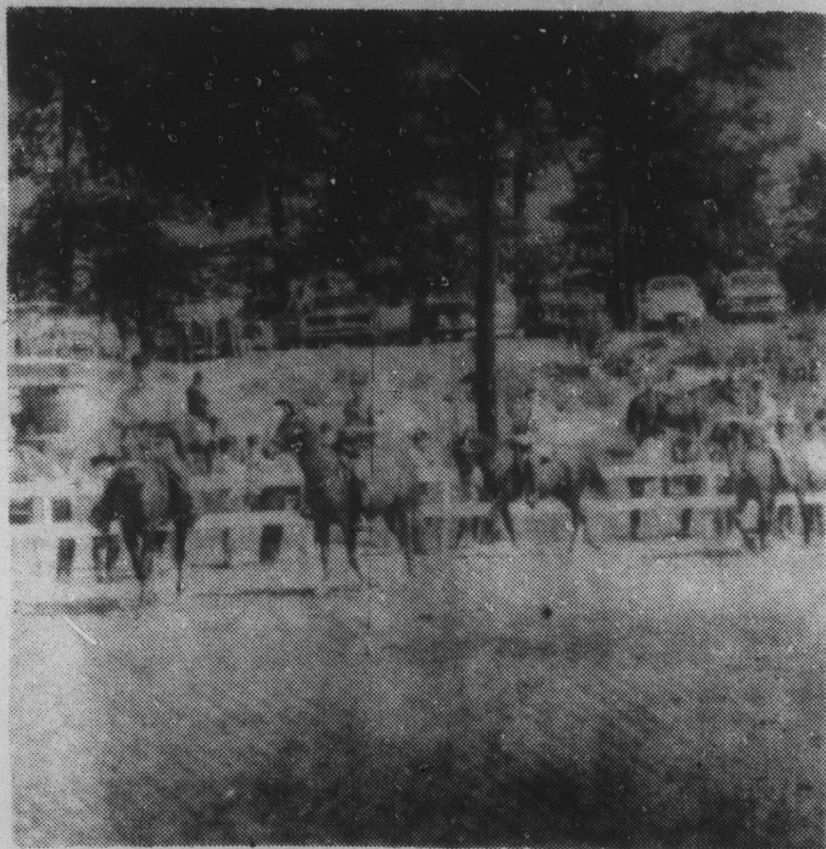


SCENES FROM Mt. MITCHELL

BRIDLE AND SADDLE CLUB

HORSE SHOW SATURDAY



BY GEORGE!

The first bill bearing the portrait of a woman was the one-dollar silver certificate series of 1886, which had a portrait of Martha Washington!

Perkins Gives Basic Needs Served

By Duke Endowment

CHARLOTTE — The needs served by the Duke Endowment in health, education, child care, and religion are "so basic that they will always be with us" and are not likely to diminish in the foreseeable future, Thomas L. Perkins, chairman of The Trustees, said in the forty-second annual report of The Endowment, which was released here Monday.

Beneficiaries are hospitals, educational and child care institutions in the Carolinas, and religious causes in North Carolina. Covering activities of The Endowment in 1966, the report includes comments on developments in the four areas of its philanthropy, a listing of assistance to beneficiaries, financial statements, and hospital and child care statistics.

Allocations and appropriations in the year amounted to \$15,566,691, bringing to \$250,040,836 the 42-year total. Approximate market value of assets at the close of 1966 is listed at \$656,991,592 with Duke Power Company stock representing the largest single holding among these assets. Dividends on this stock have accounted for 60.73 per cent of the total income of The Endowment since its establishment on December 11, 1924.

In Yancey county, through 1966, allocations and appropriations to the Yancey hospital at Burnsville, totaled \$19,242. Of this amount \$14,242 went toward

assisting it in its expenditures for charity care and \$5,000 for construction. Yancey also has shared in assistance provided for building and maintaining rural Methodist churches and for retired ministers and dependent families of deceased ministers who served in the North Carolina or Western North Carolina Conferences of the Methodist church. Included in amounts announced for the county are funds set aside in 1966 for payment in 1967.

The summary of allocations and appropriations to the two states, through 1966, shows \$151,777,526 provided for educational institutions, \$58,399,682 for hospitals, \$9,160,993 for child care institutions, \$1,877,714 for retired ministers, widows and dependent children of deceased ministers, and \$8,126,299 for building and maintaining rural churches. Funds for educational institutions include: Duke University, \$127,708,931; Davidson College, \$8,977,323; Furman University, \$9,043,154; and Johnson C. Smith University, \$6,048,118.

The need for more educational diversity, and innovation, particularly in the areas of liberal education, is emphasized in the report of the Education Section. Special grants for particular purposes encouraged the four institutions assisted by The Endowment in their efforts to improve the form and quality of undergraduate education.

The Hospital Section describes the period of unparalleled adjustment and transition being experienced by hospitals as a result of increasing external pressures for new and expanded medical services and reviews ways in which The Endowment endeavors to help these institutions meet their growing responsibilities.

The Child Care Section tells of severe stresses which have come to this field of social service in recent years and of the sensitivity of Trustees of The Endowment to the need to encourage new and more effective programs in the interest of dependent children. Some of the special projects assisted for this purpose are reviewed.

The report of the Rural Church Section cites contributions of \$225,000 to aged ministers and widows and dependent children of deceased ministers, \$427,700 to 43 rural Methodist churches for building purposes, and \$75,000 to the two Conferences of the Methodist Church in North Carolina for ministerial support. Also mentioned are special programs to help meet the needs of rural communities, training opportunities for ministers of rural churches, educational grants of more than \$117,000 to assist students in professional and in-service training, and the Randolph E. DuMont Design Program to encourage better planning of rural churches.

Let The Cold Fall Days

And Nights Remind You

BE WINTER WISE

Get Ready For Winter's Grip

Have Your Heating Problem

Checked

SEE US FOR THE FINEST IN

HEATERS

ASHLEY—Wood or Coal

PERFECTION—Oil

WARM MORNING—Coal

SEE US TODAY

BLUE RIDGE HARDWARE CO.

Burnsville, N.C.