

Yesterday's forests are our business today.

Today's forests will be our business tomorrow.



We Realize That Timber Land Must Be Managed Like Any Other Crop Land - Planted, Maintained, Harvested.

We Do This Because We Want To Be Here Tomorrow.

William A. (Bill) Banks, Owner



"Appalachian Hardwoods of Quality" BURNSVILLE, N. C.

Banco Helps Stop Waste

"Timber is a crop like any other crop. We must harvest it and plan for it to grow again."

"Because of the type of business we are in, we are the first to realize that if we don't handle it sensibly, those in the future will suffer for it."

Bill Banks, owner of Banco Lumber and Banco Sawmill of Burnsville made these comments when asked what steps his company takes to protect the forests where logging is being done.

He explains that they use a number of methods for preservation of the forest areas, such as:

- (1) Being selective in cutting by taking out ripe timber and leaving young growth;
- (2) Preventing as much breakage as possible;
- (3) Keeping the ground in such a condition as to prevent erosion, by closing roadways and water breaking;
- (4) Reseeding the land with grass and fertilizer when necessary;
- (5) By planting seedlings if the forest cover is not in condition to justify a good young growth coming on.

Banks emphasized that the preservation steps taken after removing timber from the land vary from place to place. They must look at the land to determine what needs to be done.

He also stressed the fact that years ago timber was harvested only for the lumber, but now, everything is

harvested either for use as firewood or to be ground up into chips and sent to paper mills.

The lumber industry, he said, is even pursuing the idea of finding sensible and volume consuming uses for bark and sawdust in an effort to completely eliminate waste.

Challenge Of Survival

By Mrs. J. McKimsey, Extension Aide

This is truly the age of ecology where at last we are beginning to understand the inter-dependence of all living things on this earth. But begin we must if we are to insure for our children and the generations to come the rights we have always enjoyed and taken for granted.

Improving our environment begins at home with our personal habits of garbage disposal and the emphasis on the not littering around our homes, streets, highways or school grounds.

Reducing and averting pollution problems call for the action of all citizens. We must accept the fact that everyone is needed to help avert it. There is no quick, easy or inexpensive solution. Every act to lessen pollution from each individual is worthwhile.

Most of us take water for granted. We turn on the tap and feel sure that what comes out is safe, but is it?

Mohasco Is Concerned

Through product innovations and market expansion, Mohasco has become the world's largest manufacturer of carpets and rugs, and a leading maker of interior furnishings. Burnsville Mill of Mohasco has been a part of the carpet industry since

1956, when Firth established the Mill here.

The progress being made at the Burnsville facility is typical of the dynamic growth and change that has taken place in the carpet industry. While experiencing growth and change, Mohasco has also strived to meet pollution control standards.

Their major concern has been with waste treatment. Since the Mill was opened, Mohasco has been treating waste dumped into Piney Swamp Creek. However, these efforts were not completely successful, so in the past year they have made additional improvements on the waste treatment plant.

Paul McCurry, in charge of quality control standards at Mohasco, said that it is not possible to remove all the dye from the water, but as part of the process before returning the water to the stream, the treatment plant at Burnsville Mill returns the air that is lost when the water is heated.

According to state and government standards, the water leaving Mohasco Mill is harmless, and to keep the water safe, daily and weekly tests are run on the water leaving the Mill and entering the stream.

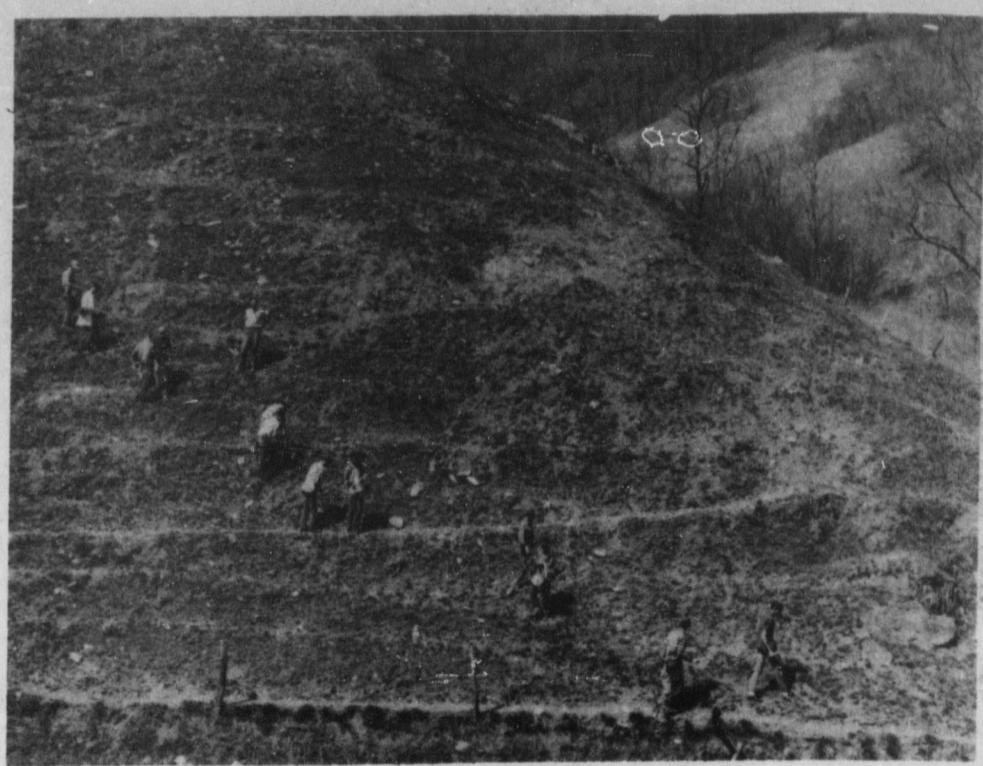
There are other areas in which Mohasco is working to improve conditions in the mill. Last year, Burnsville Mill installed a new boiler that more than meets State and Federal regulations for pollution emission. Mohasco is also in the process of meeting new government safety regulations by guarding machinery used in the Mill.

Mohasco is an important part of Yancey County and is striving to be not only a progressive, but a pleasing part of the community.

Know Cancer's Warning Signals!

- C hange in bowel or bladder habits
- A sore that does not heal
- U nusual bleeding or discharge
- T hickening or lump in breast or elsewhere
- I ndigestion or difficulty in swallowing
- O bvious change in wart or mole
- N agging cough or hoarseness

If you have a warning signal, see your doctor. American Cancer Society



USDA SOIL CONSERVATION PHOTO—Shows young men planting trees on wilkes soil, above 45% slope, overgrazed and severely eroding. Second Photo shows White Pines 6 years later on land which is now stabilized and more beautiful. Farm is Mrs. T. A. McKinney's on Brush Creek, Yancey County.



Varied Jobs Of U.S. Forest Service

Many people believe the only work the U.S. Forest Service does is to offer National Forest Timber for sale, manage camp grounds and fight forest fires. These are all important jobs performed by the U.S. Forest Service, but perhaps the most important jobs go little noticed. These are the thinning, releases, and planting work that the public does not readily see. This work determines what is going to be harvested off of a tract of land with proper treatment.

Let's discuss these three types of culture work and see how they effect what the end product of a stand will be.

A thinning is usually performed in an immature sawtimber or pole timber stand and can be done either commercially or noncommercially. Here the strongest, best and highest value trees are left on a 20 by 20 ft. spacing.

The thinning allows the crowns of the remaining trees to receive sunlight from 3 or more sides. This additional sunlight speeds up growth of the remaining trees and allows these trees to produce 25 to 50% more volume at the time of harvest. If the trees to be removed are large enough, and a market exists, these trees are sold. If these trees are not merchantable they are killed by Forest Service employees. An example of a thinning is shown

in a photograph on this page.

A release is generally done in a seedling and sapling stand. Here the more desirable trees are selected on a 20 by 20 ft. spacing and released from surrounding trees. Once the tree that will be kept for final crop trees have been selected, all other trees competing with the selected tree are killed. In a release the composition of the stand is determined. Whether the stand will be an oak stand, yellow poplar stand or a mixed stand is determined at this point. These selected trees will be the final product of this stand when it is harvested, so the selection of these trees is extremely important.

Many acres are planted annually with White Pine seedlings. Most of the planting is done by hand and on areas which will not grow

high quality hardwoods.

On a clear-cut area that will be planted, money is collected from the timber sale to finance this program.

These are only three more jobs that the Forest Service performs on National Forest Lands, but they are jobs that have long reaching outcome.



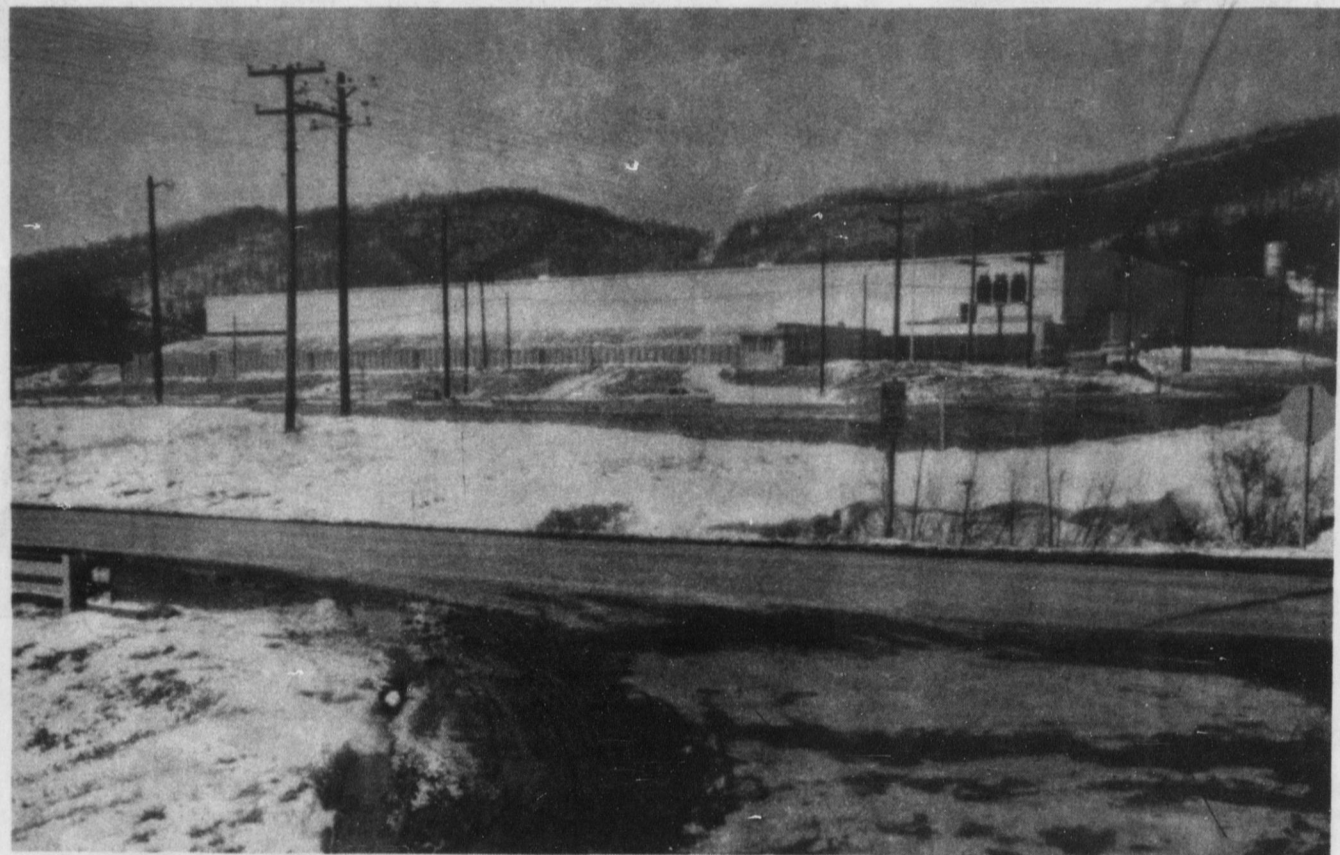
AMERICAN CHERRY GROWERS OFTEN PLANT MULBERRY TREES NEAR THEIR ORCHARDS TO LURE BIRDS AWAY!!

FHA Soil And Water Loans

The Farmers Home Administration makes Soil and Water loans accompanied by technical management assistance to owners, operators of farms and ranches to assist in developing, conserving and making proper use of land and water resources.

These loans may be used to level land, carry out basic land treatment practices, including liming, fertilizing and seeding; establish permanent pastures and farm forests.

Funds may also be used to build dikes, terraces, waterways, and other erosion control structures plus many others.



The Environment Is Everybody's Concern.

Individuals, As Well As Industry And Business

Must Be Willing To Do Their Part.

BURNSVILLE MILL OF MOHASCO

BURNSVILLE, N. C.



Yellow Poplar Stand After Thinning—Trees Now Have Ample Sunlight