

Grass Helps Control Soil Erosion

By Ned Jests
Soil Conservation
Technician

Grass is second only to trees for use in controlling soil erosion and water runoff, thereby preventing sediment pollution and flooding.

Grassland in Yancey and Mitchell Counties is nearly all utilized for livestock forage. Lawns are increasing grassland acreage and grass usually with legumes are being increasingly used on banks, recreation areas and open spaces for erosion control and beautification. Many of these areas are known as critical areas where vegetation is difficult to establish with normal seeding or planting methods. The Soil Conservation Service has the technical know how to help establish permanent seeding on these areas such as dams, mine spoils, denuded or gullied areas and road banks.

While carrying out their

resource conservation plans, district cooperators have planted over 11,000 acres of pasture and hayland. Over these years most farmers have learned how to establish grass as evidenced by healed gullies and stabilization of severely eroding fields. However, Yancey landowners still need to plant 2,670 acres of cropland to permanent cover and re-establish an

additional 3,560 acres of pasture.

If we are to use grass efficiently for conservation and pollution control, we must learn to manage properly through fertilization, brush and weed control and deferred grazing. This is especially true on the native pastures and critical areas where most work cannot be done with machines.

Landfill Now In Operation

By Keith Masters
& Roy Roberts

As most citizens are now aware, the Mitchell and Yancey County sanitary landfill is now in operation. We are very pleased to report that many people are using the landfill.

In the coming weeks construction will begin on a building to house equipment and the road will be gravel-

led to the landfill site. The road will provide all-weather access to the landfill site for the public.

In early April phase two of the Solid Waste Program will begin. This phase will consist of forty dumpsters being placed in Mitchell County and forty dumpsters in Yancey County. These dumpsters will be serviced twice weekly. Any person can bring garbage and refuse to a dumpster and it will be collected and disposed of. We urge everyone to use the landfill and dumpsters when they arrive.

With your help and assistance we can clean up our road sites and streams. At the time this program goes into full operation, anyone caught dumping indiscriminately will be prosecuted. The roads will be under patrol by the Health Department and other agencies. We assure you that if you should be caught dumping you will be prosecuted.

If you desire further information please contact your local Health Department.

FHA Operating Loans

The basic objectives of the Farmers Home Administration in making operating loans, are to assist eligible farmers and ranchers to make efficient use of their land, labor and other resources, carry on sound and successful operations on the farm and afford the family an opportunity to have a reasonable level of living.

This type of loan is considered short term.

From the standpoint of improving the pollution problem, funds secured from this type of loan may be used to improve or establish grass and waterways, drainage areas, landscape streams to enhance fishing possibilities, land clearing and seed areas where soil may now wash into streams.

There are many other purposes for which funds may be used.



Before... Erosion On Idle Land, Breece Morrow Farm, Banks Creek (SCS Photo)



After... Idle Land Now Reclaimed With Good Fescue Pasture (SCS Photo)

REAP Helps Farmers Attack Pollution

Many farmers are now tackling pollution problems on their farms with the Federal Government paying part of costs and providing technical help with solutions. You can join this growing effort to conserve soil and water resources through the U. S. Department of Agriculture's Rural Environmental Assistance Program (REAP). This program is administered locally through County Offices

of the Agricultural Stabilization and Conservation Service, under the direction of ASC farmer committeemen.

The REAP program is now in its second year. Emphasis in 1972 will continue to be on redirecting the program toward environmental improvement, particularly sediment control. REAP shares the expense of maintaining or establishing practices which will aid in abating

pollution. Approved practices, such as soil, water, woodland and wildlife conservation, are designed to help in pollution control.

Nearly everyone stands to benefit from solving agriculture-related pollution problems. That's one reason why REAP provides for a government-farmer partnership for sharing the cost. All farmers are invited to come to the ASCS office and inquire about these practices.

Standards Met At Burnsville Hosiery

Burnsville Hosiery Mill, Inc. is the oldest textile mill in the county. It was formed in 1946 by C. O. Ellis, president and owner.

The enterprise moved into its present accommodations a 30,000 foot building on the Burnsville by-pass, about three years ago. The mill produces men's athletic socks, work socks, and government socks for the Army. It also

operates a panty hose division for Glen Raven Mills.

The average tenure of employees at the mill is 14 years, which speaks well for working conditions and for the employer-employee relationship.

C. O. Ellis reports that Burnsville Hosiery Mill has made several anti-pollution moves in plant operation. They have stopped all outside burning and now haul all the

trash to an approved trash dump. All sewer and waste water goes into the city disposal system.

He also reports that the boiler has been inspected and approved for pollution emission, and that the noise level is below the standards that have been set.

Mr. Ellis said that Burnsville Hosiery Mill more than meets most of the standards for operation.



Picture of the Beautiful Deer Park Lake in Mitchell County

"There is no possible way of stopping the siltation of our reservoirs, streams, ditches, and harbors except with soil conservation."

- Dr. Hugh Bennett

Phone 929-1181
Erwin Highway

BRAND NAMES
COMBINED PROTECTION
LOWE'S
Johnson City, Tenn.

Breathing Room

People who left the farm for the big city are now moving back to the rural areas to get a little breathing room. We're glad we've helped make country living convenient.



**French Broad
Electric Membership Corp.**

Working together to make a change for the better.

Lowé's HOMESTEAD



512 Square Feet
plus 8' x 16'
Covered Deck

Architect
Emory Holroyd-AIA

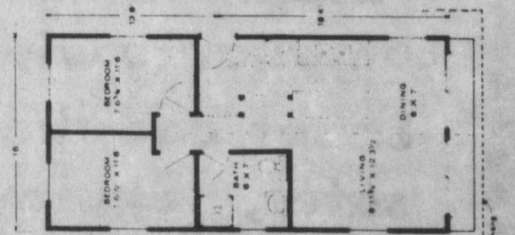
The Re-Treat

Now you can have your Second Home at the Lake, Mountains or Ocean. Lowé's offers you a complete material package to build this Vacation Home for...

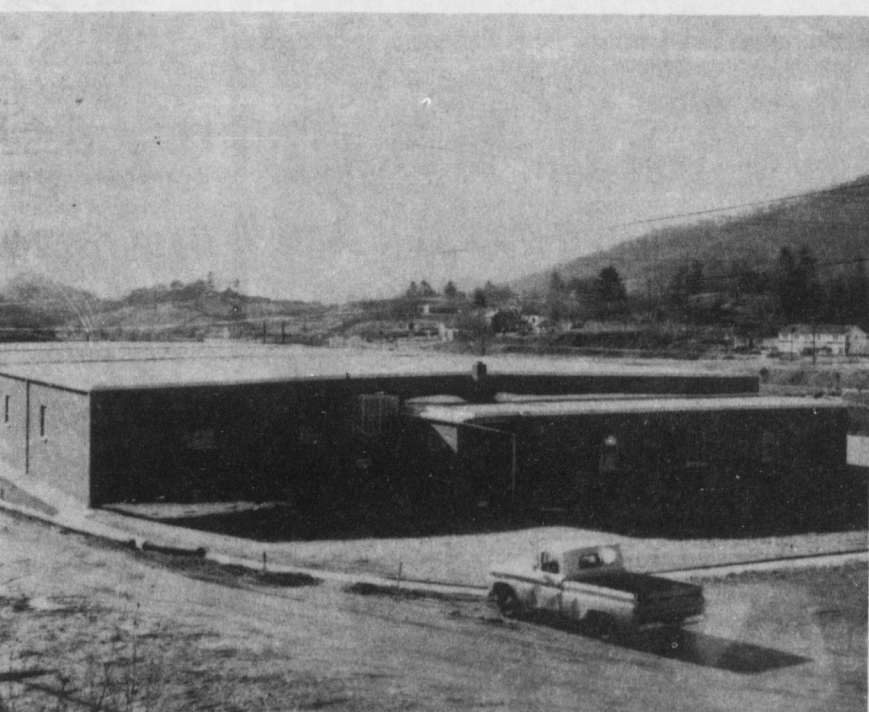
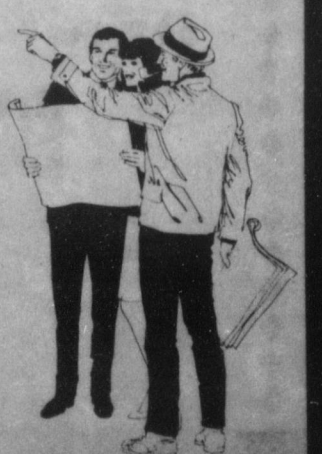
\$2888.

Lowé's Re-Treat will adapt to most any location, just find the fun and put it there. It features a large front deck completely sheltered by overhanging roof, a glass wall comprised of two sliding glass doors, the rustic charm of exposed beams, even carpeting and paneling are included in the package. At this Lowé's Low Price you truly can have your own vacation home! These additions are also available...

Large Side Deck \$148.00
Electric Baseboard Heat \$138.00
Electric Fireplace \$ 84.00



The Homestead Re-Treat is not a prefab or a shell home or a mobile home — it is a complete material package to custom build this lovely plan permanently on site. It includes the total building materials from foundation up — all lumber, plywood, electrical, plumbing, even prefinished paneling, carpeting and paint. The plan for the Re-Treat was designed exclusively for Lowé's; we guarantee everything needed to build this house to be contained in the package. Engineered for simple construction, you may even choose to build your Re-Treat yourself and save even more! Lowé's will assist you with financing, selecting a builder, blueprints, or any other building need.



**Things Have Changed A Lot In The Last Few Years.
We've Made Some Changes Too...
Changes For The Better.**

**WE ARE PROUD TO BE A PART
OF YANCEY COUNTY**

**Burnsville Hosiery Mill
Burnsville,**