

Extension Teaches Best Use Of Pesticides

By Allen McMurray
Extension Agent,
Horticulture

Pesticide use has been beneficial to mankind, making it possible to produce more and better quality food, mitigate household pest problems and save lives thru the near eradication of some diseases. But unfortunately, if used incorrectly or in excess, pesticides threaten man's environment.

Since most farm commodities produced in Western North Carolina are heavy users of pesticides, pest control measures that support a viable agricultural industry are of special interest. Primarily, because producers have averaged a four to one return on investments in pesticides, annual rates of increase for the 1952-68 period have been about 15%. Policies that reduce this level

of use may mean higher production costs for farmers and ultimately higher consumer food prices.

Pesticide use is also important to nonfarmers since only 51 percent of all pesticides are used in agriculture. Homeowners, industry and government have made extensive use of chemical pest control agents.

Mitchell County residents

face two principal problems. Selection and application of an economical pest management program and one that minimizes environmental impact and proper disposal of pesticide wastes.

Any extension program in pesticides must be heavily committed to providing information to both the farm and nonfarm uses of pesticides and to the education of the general public as to the costs and benefits of pesticide use.

A county extension program will be directed to fulfill the educational obligation to inform the people of the proper use, storage and disposal of pesticides and pesticide wastes.

Deneen Fights Pollution

Deneen Mica Company at Newdale, one of the oldest mica industries in the tri-county area, has been well aware of its pollution problems, and has made strides in correcting and improving the process used to recover mica.

They are now using an improved type of wet scrubber to take out the small particulate matter formerly released by their drying process. A new stack for fumes was recently installed and this reduced greatly the amount of emissions being made.

Deneen was one of the first companies to stop putting

their waste material into the South Toe River.

Work is still going on in an effort to improve the color of the water being discharged.

Pollution and dust control is proving to be quite a problem to each industry. Engineering and Manufacturing companies have not been able to produce the type of equipment needed to eliminate all pollution. Work is being done along this line and in time industry will be able to get the equipment needed, but until then Deneen is doing all that can be done with the equipment that is presently available to improve the environment of our area.

After explaining the efforts being made to improve our environment, Wilkins, the General Manager, made the following comments:

"If we had no phosphate detergents we would have no pollution of the waterways. If we had no automobiles we would have no car pollution, or if we built no power plants we would not have pollution from utilities; but what kind of country would we have. We must not stop but continue to halt pollution, but must do it soundly and realistically. This will involve all people and not just industry."

Wilkins added, "We were concerned with pollution before the state and government got into it. We have to live with the people in the community, and we want to be a nice industry."

Plant Trees On Idle Land

By G. W. Conrad

If all the idle land in Mitchell County were planted to trees, within a few short years landowners in the county could be receiving an additional income of \$105,000 per year. Recent studies by TVA foresters indicate that an acre of planted pines will yield an average income of \$15 per year over the life span of the plantation, usually figured at about 45 years. This income will vary with species planted and the condition of the planting site. It also includes intermediate thinnings starting in about 20 years. Here in western North Carolina white pines have been found to produce from \$10 to \$26 worth of wood per acre per year.

Recent estimates indicate that there are approximately 7,000 acres of idle land, or land that would be more profitable in trees, in Mitchell County. This land, if planted to trees, would accrue benefits to the county far in excess of the income provided to the landowners. The most immediate benefit of the planting would be the stabilization and protection of the land, and along with this, the protection of our vital water supplies. As the trees grow, the natural beauty of the land will be magnified and the new woodlands will furnish food and shelter for additional wildlife.

As the plantations reach the age where harvesting can begin, they will furnish raw materials for our ever-growing forest based industries. This increase in raw materials will mean more jobs, both from the expansion of present industries and from new industries attracted by an abundant supply of raw materials and labor. Statistics show that every hundred acres of idle land planted to trees supplies the base for one new job in industry. The 7,000 acres needing planting in Mitchell County could, therefore, create 70 new jobs for area workers.

Each acre of idle or non-productive land planted benefits not only the landowner but the pulpwood and timber producers, the manufacturer and his employees, the retailer, and, of course, the ultimate consumer.



Dairy Cows Grazing On Improved Pasture

**"The Soil, Like Freedom,
Is Not Appreciated
Until It's Gone."**

GREENE--McKINNY

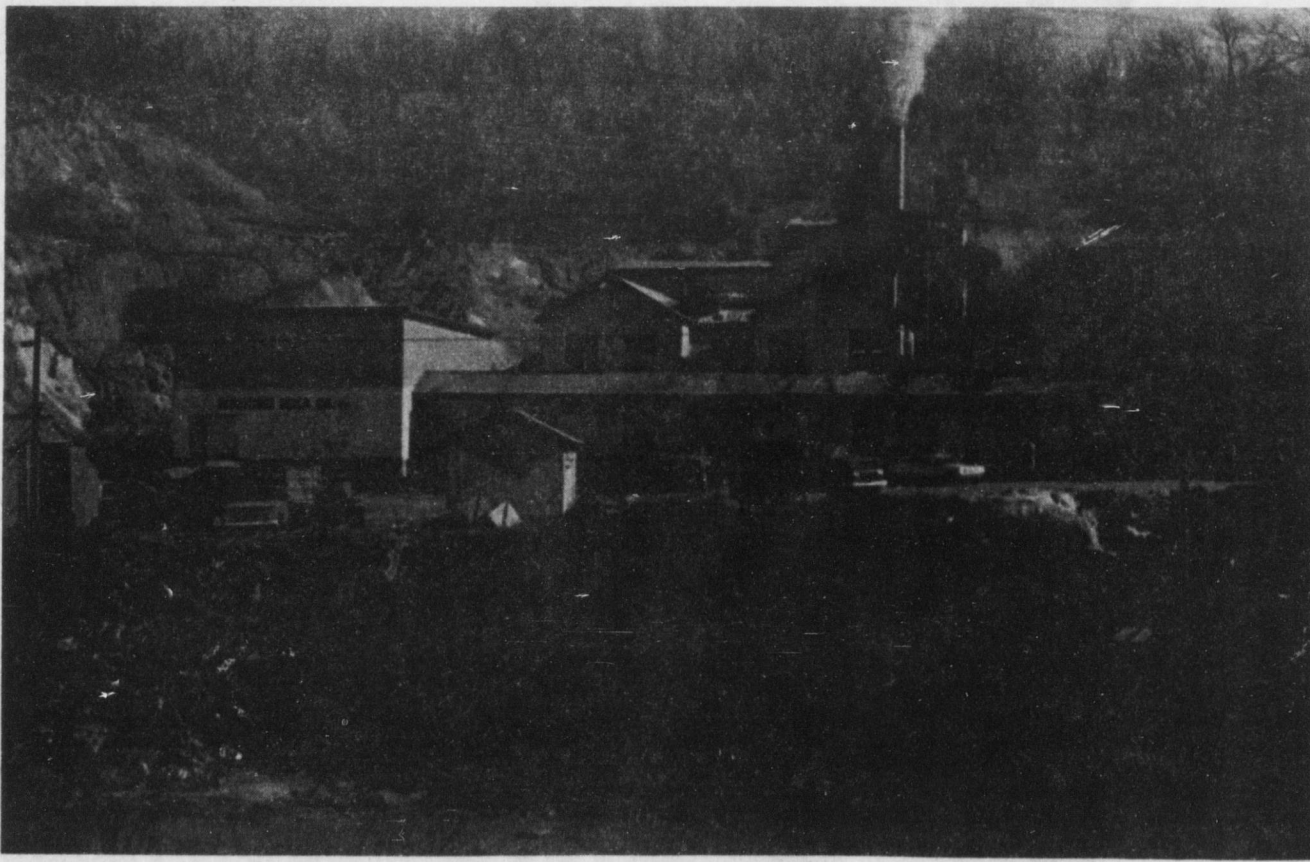
OLDS. **Chevrolet** Jeep

Hwy. 19-E Spruce Pine

A fish died
because
it couldn't breathe
because
its gills got clogged with silt
because
mud ran into the river
because
there was nothing to trap the rain
because
there was a forest fire
because
someone was careless with fire.

So please, be careful with fire...

because



**The Best People in The World Live Here,
And Because They Do We Want To Help Make
The Environment Secure For Them And Their Families**

DENEEN MICA CO. INC.



At Deneen Mica, Waste Material Is Used For Landfill



Improved Pasture - Rye And Vetch Residue; Alfalfa And Corn Strip Rotation On This Typical Mitchell County Farm

**'Nothing, In My Opinion,
Would Contribute More To The
Welfare Of The States Than The
Proper Management Of Lands.'**

-George Washington

Appomattox Garment Co., Inc.
"A GOOD PLACE TO WORK"



Mountain Farming.
Tobacco Is Seen In The Foreground; Strip Cropping - And Cattle Grazing On Steep Hillside On Well Established Pasture Land In Background.

**'Human Erosion Goes Hand
In Hand With Soil Erosion.'**

Wilson Grocery And Supply
Quality Groceries Meats & Feeds
Guy Wilson, Bakersville, N.C.