

JULY CLEARANCE SALE

FINAL SUMMER CLEARANCE

DRESSES
AND
PANT SUITS
50% off

30 AND 50% off
ON ALL
LINGERIE



OPEN
9-5:30 Mon.-Sat.

Painting In Mountains Opens In New Studio

Painting in the Mountains opens its 7th season at its new location on Phillip's Knob mountain. The summer classes began July 10 and will run to August 18. Classes are also planned for this fall and are to start this year, October 9 and continue through October 27, a total of three weeks.

The new facilities on the Fire Tower Road, some 400 to 500 ft. above Burnsville include a large studio with north light, two large porches which open out to a road, and sweep-

ing view of the Black Mountains. In the new studio building there are also two apartments for either students or instructors. A new "summer gallery" will soon be opened in this same building, on the ground level, where shows of the paintings and graphics of the instructors of Painting in the Mountains and also the art works of their students will be opened to the public. From time to time special shows will be assembled and will be announced.

The new studio facilities help expand the growth possibilities of Painting in the Mountains. This "school" continues the tradition of painting classes long held in Burnsville and established by Frank Stanley Herring and his wife, Frances Hall Herring some 25 years ago. Both John Bryans and Everett Kivette, instructors of ETM, were students at the original "Burnsville Painting Classes" and studied for a number of years with Mr. Herring.

Over the 7 years "Painting in the Mountains" has been in existence its growth has exceeded the expectations of its co-founders, Bryans and Kivette, so that it is their hope now to see it go into a more extended operation. The new Fall Classes, they feel, are evidence of P. I. T. M.'s growth potential.

Attending the classes this week are four local scholarship students, two girls and two boys. The girls are Donna Hensley and Rosemary Kampf. The boys are Randy Bartlett and Marcus Vess. Mitzi Presnell, former scholarship student of P. I. T. M. is now one of 20 art students chosen this year in North Carolina to attend the Governor's School in Winston-Salem.

Others attending Painting in the Mountains this week are Mrs. Louise Bauman of Oxford, Pa.; Miss Louise Bauman of Suttland, Maryland; Mrs. A. W. Easton of Camden, S. C.; Mrs. Annie Flinton of Charleston, S. C.; Miss Nina Greenley of Marion, N. C.; Mrs. Lois Heald of Tullahoma, Tenn.; Mrs. Louise Kelley of Rt. 2, Burnsville, N. C.; Mr. A. Stuffer Myer of Lexington, N. C.; Mr. Roy Neal of Philadelphia, Pa.; Mrs. Eleanor Sebring of Summerville, South Carolina; Freddie and Janette Wood of Atlanta, Ga.; Mrs. Claude Vess of Burnsville and Mrs. Betty Williams of Camden, S. C.

The Classes of P. I. T. M. are conducted 5 days a week (Monday through Friday) in all mediums: landscape, portrait and still life. Two graphic techniques are also taught: line block and silk screen.



4-H Delegates At Congress

Yancey County 4-H members Randy Crowder and Janet Treadway were delegates to the State 4-H Electric Congress in Charlotte on July 10-12. Dot Grindstaff (left), CP & L Electric Living Specialist, and Mrs. Zillah Swann, 4-H Leader (right) accompanied the delegates. The 4-H'ers were selected on the basis of achievement in the electric project. Carolina Power and Light Company sponsored the trip to the Electric Congress.

Local Riders Win At Horse Show

Again this year the horse show sponsored by the Mt. Mitchell Saddle Club was a huge success.

Several hundred spectators and contestants enjoy this event each year. And this year there were lots of "new" local contestants who made a good showing. One new showman was Mr. Roy Ray of Burnsville showing his Appaloosa in the App Halter Class. He went away as a two time winner.

Another man, formerly of Burnsville, now of Shelby, who made a good showing, though not as new to the game as Mr. Ray, is James Wilson. Mr. Wilson brought several horses to the show and won first in the Pole Bending Class and his horses, with other riders, won more classes. Mr. Wilson also won the Coke Class. These are timed events and take much skill and training on the part of both rider and horse. The best rider with the fastest horse is usually the winner.

Other local talent winning at the show were Vickie S. Fortune winning on Copper S. Sun. She won the afternoon trophy for the Racking Class and then the Championship in the Racking Class at the evening show. Vickie brought home the Challenge Trophy for that event which was donated in 1971 by Ingles Food Stores.

Gwen Tomberlin won the English Pleasure afternoon class on Gypsy Rover and also the English Pleasure Championship at the evening event. Her main prize was a horse shoe of flow-ers, donated in memory of Mr. John Banks who was a very faithful member of our club.

Gwen also won both Saddle Seat Equitation Classes on Mt. Mitchell Princess.

Winner of other classes was Danny Hughes with his Pepsi-Cani-They won the Halter Class for 2 years and over.

Warren Hughes won the class for 2 year Walking Horses on McKay's Sweet Sue. Warren also is the proud possessor of a fine challenge trophy.

Dr. Jeannette Maddox made a fine showing in the Ladies Western Pleasure Class placing second in a large class.

Several young riders from Burnsville who made a good showing on their ponies are Mike Pate, Rocky Styles, Sharon McCurry, Rom Evans, Curt Styles, and Darrell Griggs.

This will give the people of the Tri-County area who do not participate in the horse show business what it is all about. There are several hundred horses in the area that are fine animals and belong to some very proud owners. Now the Mt. Mitchell Saddle Club needs the people and their animals to take part in their shows and to help build the club. As one spokesman for the club stated "We have a very fine club membership but I'm sure if the people would only venture forth and take part in this good clean sport, it would be quite an enjoyable sport for the whole family and make our club grow."

"Most of us work hard to keep this annual event as a top show in our area, but as with any club we do appreciate more help and most of us who work so hard for this do so for our children," she added.

The Mt. Mitchell Saddle Club would like to thank each of their many sponsors who helped make the show the great success it was. And many thanks to the N. C. Radio Patrol who assisted with the parking and many other duties.

Sunday Concert Review

By Susan Erickson
Music in the Mountains presented its third Sunday Concert of the season at the Presbyterian Church this week, a lively program of chamber music featuring works by famous composers.

Opening the program with Hayden's Quartet in E Flat -- sometimes called "The Joke" because of the composer's humorous touch--the quartet performed with remarkable balance and interpretation.

Pianist Ruth Geiger followed with an exciting and brilliant performance of Chopin's spectacular Ballade in F Minor. This drew an ovation from the

large audience. The program concluded with Schubert's Quartet in A Minor, a melodious, introspective work which the quartet performed with great sensitivity and skill.

The fourth Sunday Concert next week will feature the same fine ensemble in a program by Rossini, Ernst and Mozart, at 3:30 at the Presbyterian Church. The following Friday, July 28, Madame Lili Kraus, famous concert pianist, will present her annual benefit recital for Music in the Mountains, at 8:00 p. m. at the First Baptist Church.

Revival Scheduled Soon, Penland Is Evangelist

A Revival will be held at the Estatoe Presbyterian Church July 23-28 at 7:30 p. m. The Rev. Nathan Penland will be the Evangelist.

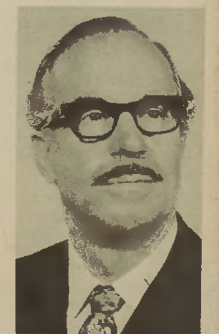
There will be special music each evening so come and bring your friends and enjoy the blessing of the Lord. The following week, July 30-August 4, the Revival will move to the Micaville Presbyterian Church with the same Evangelist.

Evangelist Nathan Penland was born in Western North Carolina near Asheville. He attended Bible College at Toccoa Falls, Georgia where he studied for six years. He also attended the University of Georgia.

For years Mr. Penland has served as an Alliance pastor, having pastored churches in Ontario, Alabama; Bessemer, Alabama; Rome, Georgia; West Palm Beach, Florida; and The Asheville Gospel Tabernacle of the Christian and Missionary Alliance located in downtown Asheville.

Reverend Penland conducted a Drive-In church in an Asheville shopping center for ten years, where the attendance ran well over 500 each Sunday morning. This was in addition to his regular pastoral work. For most of Mr. Penland's ministry he has conducted weekly Radio broadcasts from the churches he has pastored.

Recently, Mr. Penland recorded a hymn album entitled "Favorites Old and New".



Rev. Nathan Penland

In 1971 it was the speaker's privilege to be a Conference speaker in the Ivory Coast, Africa and for five weeks he preached in parts of Europe and Africa.

THE YANCEY JOURNAL
Burnsville, N. C.

Ed Yuziuk--Publisher
Carolyn Yuziuk--Editor
Pat Briggs--Manager
Jody Higgins--Assoc. Editor
Published every Thursday by

Twin Cities Publishing Co.
2nd Class Postage Paid at
Burnsville, N. C. 28714

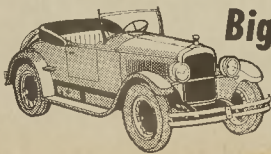
Subscription rates:
\$3/yr. in county
\$5/yr. out of county
Thursday, July 20, 1972
Number 16

New & Used Cars & TRUCKS

OK Used Cars At
Roberts Chevrolet

RE-CONDITION
BUMPER TO BUMPER

We Have Junkers, Good, Bad, Old And New Cars
From \$2000 To \$50000



Biggest Discount Sale Of
The Company History



Head of the Class
Quality Used Cars

Roberts

CHEVROLET CHEVROLET-BUICK & JEEP CHEVROLET
Burnsville

SUMMERTIME SPECIALS!



MISS BRECK
HAIR SPRAY

77¢

SOFT & DRY

\$1³⁹



VISINE
99¢

NICE 'N EASY
\$1⁴⁹



RUBBING ALCOHOL
19¢



the first name in
sinus headache,
sinus congestion:
Sinutab
\$1⁸⁸

POLLARD'S DRUG STORE

West Main Street
Burnsville, N. C. 28714
Tel: 682-2146



FROM
**SOUTHPORT
ROOF-GLO**
ALUMINUM COATING



Formulated for
Roof Maintenance of
• MOBILE HOMES
• TRAVEL TRAILERS
• CAMPERS and
• TRUCK TRAILERS

Guaranteed satisfactory results
on a purchase
price refund
basis . . . \$5.25

**Mt. Mitchell
Industries**

Ph. 682-8166
19E By Pass And Pennsylvania Road