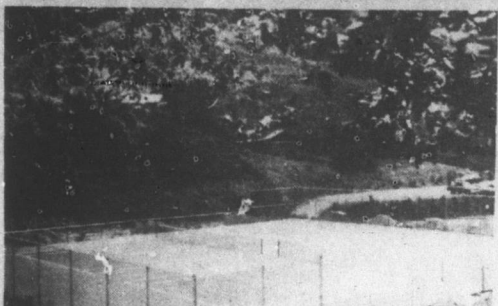




Wolf Laurel doesn't promise an 18-hole golf course. Wolf Laurel doesn't promise a ski run. Wolf Laurel doesn't promise tennis courts, water lines, roads and utilities.



Wolf Laurel doesn't promise these facilities because it isn't necessary. All of the above and much more has already been built. Wolf Laurel has an 18-hole championship golf course with the highest hole east of the Rockies which was recently featured in a national golf magazine. Wolf Laurel's 3-lift ski-run has the only natural bowl in the South. Wolf Laurel has approximately four miles of asphalt roads, over thirty miles of gravelled roads, and water lines and utilities available at all homesites.

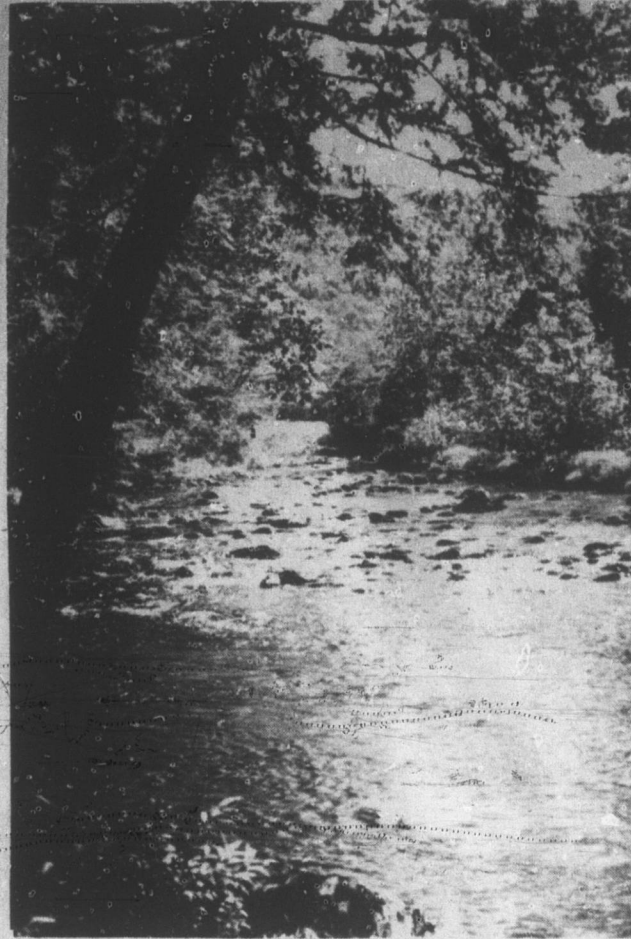


Wolf Laurel is a place many people have already decided to call home. You'll find a variety of beautiful homesites to choose from. Come see for yourself. Wolf Laurel is located just 27 miles north of Asheville, N. C. on U.S. Highway 23. Spend a day, a weekend or a week. Stay at the Wolf Laurel Lodge or in one of their 10 rustic cabins. Dine at the mountaintop restaurant and lounge at 4600'. Bring the entire family. Golf, ski, play tennis, hike, relax, just plain enjoy yourself. Call (704) 689-4721 for reservations. Or write Fondren Mitchell, President, Bald Mountain Development Corp., Wolf Laurel, Route 3, Mars Hill, N. C. Write to this same address for Wolf Laurel's free brochure. If you just want to drop in, bring this ad which will serve as your gate pass. Come see what Wolf Laurel doesn't promise. You'll like it.



AD 7103a

Wolf Laurel is a different kind of second home resort because of what it doesn't promise.



Sparkling S. Toe River Flows Through Development

Mt. Mitchell Lands Begins 500 Acre Development

Mt. Mitchell Lands, Inc. has begun construction on a scenic 500 acre development in the South Toe section of Yancey County.

To be called South Toe River Development, it will include large, wooded homesites and among other features, an 18-hole golf course.

Outdoor recreation will be stressed in the development. Three fourths of the boundary is national forest land, on which deer and grouse abound over thousands of acres. Mountain trout are plentiful in the approximately two miles of South Toe River flowing through the development.

Close-up views of six mountain peaks over 6,000 feet in elevation are to be had from almost every location in the development. One of the oldest trails to the top of Mt. Mitchell, the highest peak in eastern America at 6,684 feet, starts from the center of the property. Areas within the develop-

ment will be set aside and protected in their natural beauty for the enjoyment of residents. Covenants for applied ecology are included in all sales contracts.

The property, owned for many years by the Deyton family, was acquired last year by Veme Floyd of Alamance County and Harold King of Hickory. They credit the Deyton's for keeping the large tract of land together and for preserving the wildlife and for protecting South Toe River which flows through the property.

Floyd is the corporation's president and general manager. His son Jim and King's son Lee assist him. At one time Floyd served the state as senior biologist in the Division of Game and Inland Fisheries and edited the wildlife magazine.

Over 500 building sites are being surveyed. One hundred and twenty lots containing 1/3 to 3/4 acre are now being sold at pre-development prices of \$3,300 to \$7,500. Graveled roads, water, electricity and telephone service are available.

The 18-hole golf course planned for one side of the property, should be one of the most scenic courses in the world. The course is being designed by noted British golf architect Fred Hawtree and will be in line with championship golf courses all over the country. The course will be public, with special privileges for residents.

N.C. Travel Council Promotes Tours

Captain G. A. Downing of the Yancey County Country Store here attended the fall meeting of the "Travel Council of North Carolina, Inc." held at the Village Inn, Beech Mtn. on October 8 and 9.

The Business meetings emphasized the growth and importance of organized package tours, either in groups or individual, combining several attractions.

As an example, a tour could include a night at Nu Wray or a motel, dinner, visit to the Country Store and tickets and reservations for the Parkway Playhouse or Music in the Mountains, with everything prearranged. All sorts of possibilities are available in this area.

Parkway Playhouse has indicated an interest in the pack-

age tour, and if anyone wishes to discuss the possibilities, please contact Capt. Downing.

"Senior Citizens Travel" was presented by the First Union National Bank, The growth of

tours and travel for the older age group is growing yearly.

Side trips were made to Sugar Mountain, Land Harbors, Grandfather Mountain, and dinner at Grandfather Golf & Country Club hosted by Hugh Morton.

WOOD IN HOUSING

A little-known fact about wood explains why this house survived ten generations of Americans.

Why does wood last and last? Wood's tough cellular structure



is cemented together with a natural glue called lignin, a substance that's not only strong, but impervious to extremes of heat and cold.

That's why a well-built wood house will last generation after generation, and why it makes sense to demand wood in a new home.

To learn more about this unique material, write for a free copy of "Some little-known facts about wood." Send your name and address to American Wood Council, Dept. NA, 1619 Massachusetts Avenue, N.W., Washington, D.C. 20036.

Scenic View Heights Is Affordable

We are planning to offer people country living at a modest price, says Farrell Hughes of his beginning development at Brush Creek.

The large tract of land, named Scenic View Heights, has been sectioned into one-acre lots by Hughes, but he emphasizes that the acres are divided on paper only and whatever number of acres a person desires is available to him.

One cottage has been built to show prospective customers, and plans are underway for more cottages to be constructed as lots are sold. The homes are simple, but complete--including even furniture, and all materials used are of good quality.

Although selling the total package of a one-or-more-acre lot with furnished cottage is a primary consideration for the developer, he will also sell tracts of one or more acres with no building, so that the purchaser may plan and build his own home.

"Our goal is to give the buyer just what he wants, in terms of acreage and house plan, at an affordable price," says Hughes. Cottages will be in a secluded woodland setting, offering plenty of privacy--but the primary roads which are already built, will make them easily accessible.

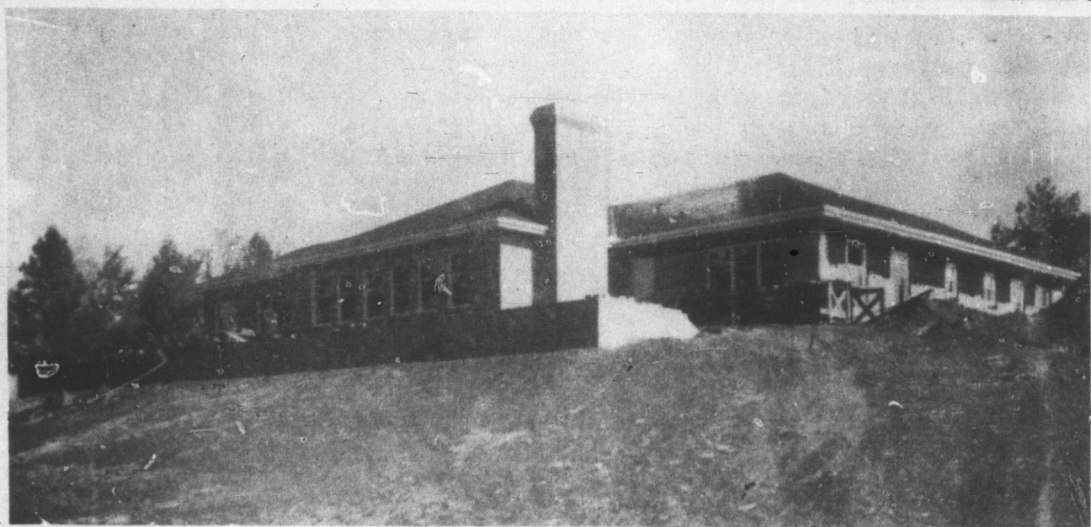
One of the best parts of the whole plan is that a completely furnished cottage on a one-acre tract is being offered at the extremely low price of \$12,500 according to Hughes. Only 1/3 down is required, and the balance may be paid at reasonable terms.

Scenic View Heights offers mountain-country living to fit almost any pocketbook!



A fish died
because
 it couldn't breathe
because
 its gills got clogged with silt
because
 mud ran into the river
because
 there was nothing to trap the rain
because
 there was a forest fire
because
 someone was careless with fire.

So please, be careful with fire...
because



This Spacious Yancey County Home Is Under Construction By Yancey Builders

WE BUILD YOUR HOME OR SUPPLY YOUR BUILDING NEEDS



The Large Home Is In South Toe; Has About 5,000 sq. ft. Floor Space

OUR TRADEMARK IS QUALITY - DEPENDABILITY - SERVICE

YANCEY BUILDERS SUPPLY

Phone: 682-2344