

Grandfather Golf & Country Club Is Finest Resort

G. F. Co., developer of Grandfather Golf and Country Club near Linville, has created one of the finest private-membership facilities of its type in the entire nation.

Careful planning by environmental and landscape consultants, architects, engineers and recreation specialists has resulted in one of the most tasteful blendings of man with his scenic surroundings to be found anywhere. The developing company has given preservation of natural beauty the highest priority in this delightful resort area.

The recreational variety offered at the club and in the nearby area provides four-season activity for those interested in sports and the out-of-doors. There also is a series of scheduled social events and indoor activities which are the marks of a well-rounded resort catering to the enjoyment of young people as well as adults.

Grandfather Golf and Country Club appears to have been created specifically for quiet moments away from the rush and congestion of the outside world. It is a place for solitude in a wilderness. It is a place for active happy moments among friends.

Located in the heart of picturesque Linville River Valley, at the foot of 6,000-foot Grandfather Mountain, the club and G. F. Co. property is free from the dangers of human encroachment since it is bordered by other resort property, the Daniel Boone Wildlife Refuge, the Pisgah National Forest, and Grandfather Mountain, Inc.

The championship golf course at GGCC has rapidly become known as one of the finest its unique scenic beauty gives it a special flavor which cannot be duplicated elsewhere. Each hole along the nearly 7,000 yd. course seems to have been designed for maximum interest.

In addition to the splendid golf course, Grandfather Golf and Country Club offers the finest in facilities for such pleasures as tennis, sailing, swimming, fishing, hiking and bird watching. The area is a haven for the naturalist. The 35-acre Loch Domic is well stocked with thousands of large mountain trout.

Condominium ownership at GGCC affords a new dimension in elegant living, combining the best features of carefree home ownership with resort character. All G. F. Co. condominiums have fireplaces, total electric heating, fully-equipped kitchens, plus washer and dryer facilities. They are served by a central sewage disposal system, and all power lines are underground. The condominiums are on or near the lake in wooded surroundings, with each building afforded an outstanding view. All club facilities and activities are within

in easy walking distance.

For the convenience of the owners, the G. F. Lodge Company offers a full-service property management program which directs reservations and rent collection for the individual owners who desire to rent their condominium apartment when they are not using it.

The various condominium units are individually owned, with owners paying their own taxes, utilities bills, and a pro-rata share of insurance.

Each owner pays a monthly fee to provide for services such as garbage collection, snow removal, upkeep of grounds and a property security system.

Privacy and seclusion are standard features of homesites surrounding the country club property. Wherever it is situated, a GGCC home reflects and enhances the distinctive nature of the total resort. Although every home is unique, each blends attractively with the natural terrain. While the deve-

loping company does not inhibit the Lund owners' exercise of personal taste, it does insist that a high standard of design is maintained to safeguard the proper relationship between the home, the environment and the neighboring properties. A typical lot measures one acre in size, and the home thereon is screened by native forest growth from neighboring properties.

The GGCC clubhouse is an exceptional structure from both

the functional standpoint and attractiveness. Decorated in an Old English flavor, it offers gracious dining in a picture-windowed room from which the 18th green of the golf course and the lake may be seen. A spacious lounge area is the setting for social gatherings, and the lower level houses locker rooms, meeting rooms and additional lounges.

Want Ads
SATISFY YOUR NEEDS

CARPENTER AND HELPER WANTED

Must Be Craftsman Who Takes Pride In His Work. Must Be skilled in Framing, Cabinetry, And Finishing.

Top Wages Paid. CY JORDAN, Licensed Builder 682-2704



Photo by Hugh Morton

Residential Innovation

A residential innovation that may become the ultimate in condominium apartment living is fast taking shape at Grandfather Golf and Country Club at Linville, N.C. Shown in the foreground are clusters of townhouses that will be completed this fall on an island at the junction of the Linville River with the headwaters of the club's lake. Owners of the riverside apartments will be able to cast for Rainbow trout from their respective front porches while looking across the water at the 18th fairway and the profile of Grandfather Mountain.



"Mind your manners, or you may lose a place to hunt!"

That joint advice was issued to Tar Heel hunters by Jim Graham, Commissioner of Agriculture and Clyde Patton, Executive Director of the Wildlife Resources Commission.

Graham and Patton said hunters are finding it harder each year to find private farm lands where farmers will allow hunting, and the fault lies with the hunter, not the farmers.

"During the hunting seasons," they said, "hunters all too often leave the fields littered with empty shotgun shell boxes and empty cartridges, not to mention drink cans and bottles, milk cartons and other litter that is both unsightly and sometimes dangerous."

"Empty shotgun cartridges contain a chemical that livestock, especially cattle, like to eat, and this makes the animals sick and may even kill them."

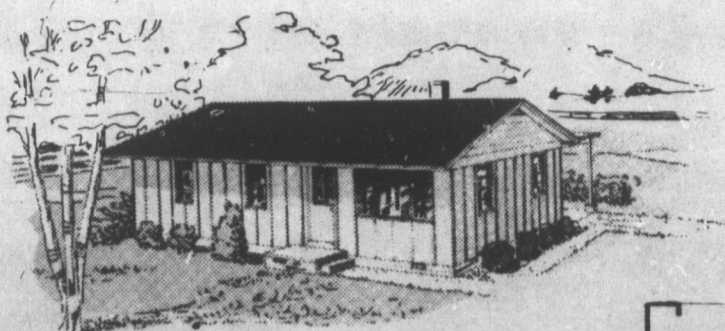
Graham and Patton added that farmers take a dim view of broken fences, gates left

open, and shot sprinkling their farm buildings and livestock, particularly cattle.

North Carolina has 2,000,000 acres of public hunting lands, but these are mostly forested areas, and with half a million hunters taking to the fields and woods each year, this figures only four acres per hunter and 85% of all game is produced on privately-owned agricultural land.

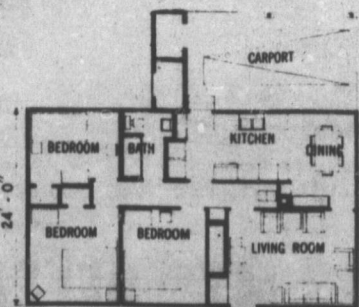
The agriculture and wildlife leaders said that many farmers are willing to allow hunting on their land, provided hunters first ask for permission and then conduct themselves as guests of the farmer. Sharing the game with the farmer is a nice gesture, and sending his wife a box of candy after the hunt is likely to bring about an invitation for a return hunt.

Farmers do not own the game on their land until it has been reduced lawfully to possession, but they have the sole say-so as to who will hunt on their land.



PLAN NO. 7169

3-BEDROOM HOUSE



Extension Service Home Plan

Among house plans currently available from the Yancey County Extension Service is a moderate sized three bedroom house. This house is described as most inviting when landscaped with low foundation plantings on a slightly rolling lot. The bedrooms are generous in size with ample closet space placed to act as buffer between the sleeping and activity areas of the house. Complete working drawings for Plan No. 7169 may be obtained from your county agricultural agent at no cost. The plan was prepared by the U. S. Department of Agriculture as part of its Cooperative Farm Building Plan Exchange.



GRANDFATHER GOLF AND COUNTRY CLUB

SPACIOUS RESIDENTIAL LOTS AND

LUXURY CONDOMINIUM APARTMENTS

DEVELOPED BY

G.F. CO.

P. O. Box 208 Linville, N.C. 28646



An exclusive, private resort development for enjoyment of Members and their guests, featuring spectacular 18-hole championship golf course at base of 6,000-foot Grandfather Mountain, highest peak in the Blue Ridge Mountain Range. Boating, trout fishing, sailing, tennis and other resort activities. Five ski slopes within 20 miles.

