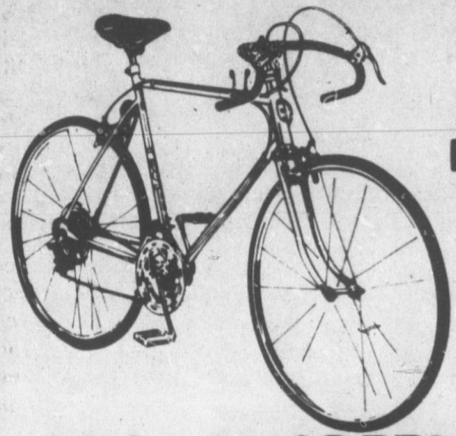


# BEN \* FRANKLIN



BANKS FAMILY SQUARE  
U.S. HWY. 19E & FERGUSON HILL RD.  
BURNSVILLE, NORTH CAROLINA 28714

## Spring Savings

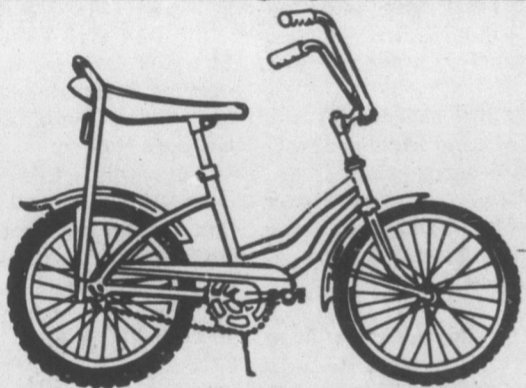


**HUFFY**

**26-In. 10-SPEED BIKE**

Light and fast! Padded blue saddle, blue taped handlebars. Wide ratio gears.

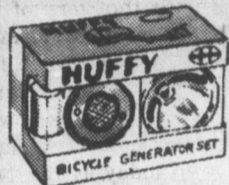
**73<sup>88</sup>**



**20-In. Hi-Riser Bike**

Smooth coaster brake. Red and blue metallic colors, chrome fender trim.

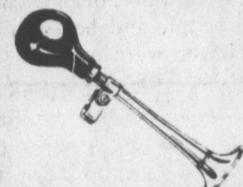
**42<sup>99</sup>**



**Bike Headlight Set**

Chrome plated headlight, generator & 2 1/2-in. tail light.

**6<sup>44</sup>**



**Bulb Bike Horn**

9-in. chrome bulb horn; universal handlebar bracket.

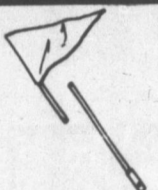
**1<sup>59</sup>**



**Bike Carry Basket**

10x6 1/2 x7-in. woven white vinyl with pop-art flowers.

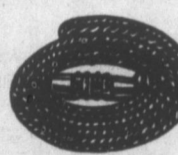
**1<sup>44</sup>**



**Day-Glo Bike Flag**

6-ft. fiberglass mast with flag; plated steel brackets.

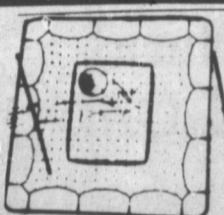
**1<sup>57</sup>**



**Bike Chain Lock**

36-in. vinyl plastic covered steel chain.

**1<sup>79</sup>**



**Return-A-Ball**

37 sq. in. steel tubular frame, nylon net. Rustproof

**5<sup>99</sup>**



**WILSON**

**TENNIS RACKET**

Ash strata-bow frame, spiral nylon strings; perforated black grip.

**12<sup>88</sup>**



**"ALL STAR" BASEBALL BATS**

Black finish, gold branding. 31-35-in. lengths. Slight irreg.

**1<sup>97</sup>**

**CLEAN-UP FIX-UP PAINT-UP**

**BIG SAVINGS**  
on LUCITE Paints

- Whatever LUCITE covers wet stays covered when it dries
- Goes on fast, dries even faster
- Never needs stirring, doesn't drip like other leading paints
- Soap and water clean up

ONLY **\$5<sup>99</sup>** GAL.



**LUCITE House Paint**

- Shown best by test for house protection
- Dries to a tough, protective sheet
- Doesn't let weather in, lets moisture out
- Soap and water clean-up

ONLY **6<sup>99</sup>** GAL.



**LUCITE Wall Paint**

**BIG SAVINGS**

**ALL-AMERICA ROSE BUSH OFFER**  
Your Choice of 5 Famous America Rose Bushes  
All bushes are everblooming, A.A.N. Grade #1, 2-year, field grown and are All-America Rose Selection Winners.  
Pick up coupon for this exciting offer in our paint department. No purchase necessary.

ONLY **\$2<sup>50</sup>** EACH

**Ben Franklin**



Lounge Around... Relax... Sun Bathe!

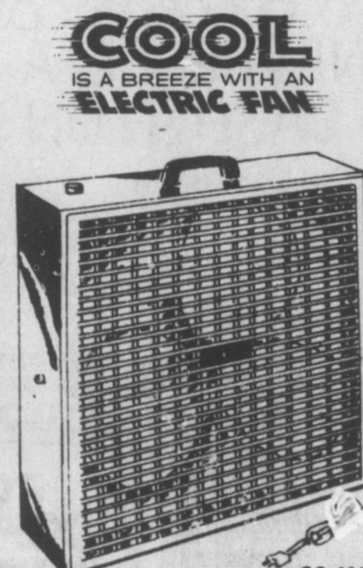
**Deluxe PATIO FURNITURE**

• Luxury Lounger and Matching Sun Chair

Bright, wipe-clean PVC tubing, gleaming aluminum frames. 24 1/2 x 12 x 76-in. multi-position lounge adjusts to 5 positions. Folding chair is 31 1/2 x 22-in. Rich range of match-or-mat colors.

Our Low Price **13<sup>87</sup>** Sun Cot

Our Low Price **6<sup>99</sup>** Sun Chair



**COOL**  
IS A BREEZE WITH AN ELECTRIC FAN

**BREEZE BOX FAN**

K1R-D150-11

**12<sup>88</sup>**

Enjoy the Great Outdoors!

**ALUMINUM FOLDING LAWN FURNITURE**

Sturdy, lightweight aluminum frames with multi-color weather resistant plastic webbing. Easy to fold for storage...comfortable for sunning, sitting!

CHAISE About 24 1/2 x 72-in. long

**8<sup>99</sup>**

**4<sup>97</sup>**

CHAIR About 22 1/2 x 31-in. high

**Pro-Style BASKETBALL**  
Official Size!



**3<sup>99</sup>**

Indoor-outdoor ball. Nylon wound basketball with polymeric Tan cover. Scuff resistant.



**Youth's Fielder's Glove**

Top grained cowhide, leather lined. Finger-tip control.

**6<sup>99</sup>**



**Adult Fielder's Glove**

Top grain cowhide, leather lined; deep pocket. Inter-lock webbing.

**12<sup>88</sup>**



Denim, Basketball

**SHOES**  
**4<sup>99</sup>** Pr.

Blue denim uppers, brass eyelets. Padded ankle collar; genuine rubber suction sole. Youths, boys' and men's sizes.



**Ripple Afghan Kit**

45x60-In. Size  
**9<sup>99</sup>**

Delightful to make...a treasure to own. 100% acrylic yarn. Choice of favorite color combos.



**Polyester Double Knit**

**MATERIAL**  
**Sale 1<sup>99</sup>** yd.



Save Now on this Handsome 3-PIECE LUGGAGE SET

Takes a lot of use and abuse... always looks great. Washable pebble grain vinyl over sturdy molded fiber shells. Quilted-vinyl linings. Lock and key.

**19<sup>88</sup>** SET



Do You Go for A Bargain?

**ALUMINUM SOFTBALL BATS**

Louisville slugger - for extra base hits!

**7<sup>77</sup>**

**Once In The Morning Does It.**



24 FL. OZ.

REG. \$1.47

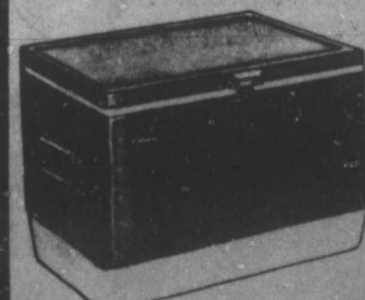
**SCOPE**  
**97<sup>c</sup>**

SUPER SIZE

**IT PAYS TO SHOP**  
**BUT SHOP WHERE IT PAYS!**

**SPEND MORE TIME OUTDOORS**  
FOR THE FUN OF IT

**JUMBO 56-Qt. COOLER**



**21<sup>88</sup>**

Extra large size! Recessed handles; built-in bottle openers, safety latch. Red or green colors; 16 lb. 22 1/2 x 13 1/2 x 15 1/2-in.

**OPEN:**  
**WEEKDAYS**  
9:00 TO 9:00  
**SUNDAYS**  
1:00 TO 6:00

**KEYS CUT**  
while you wait!