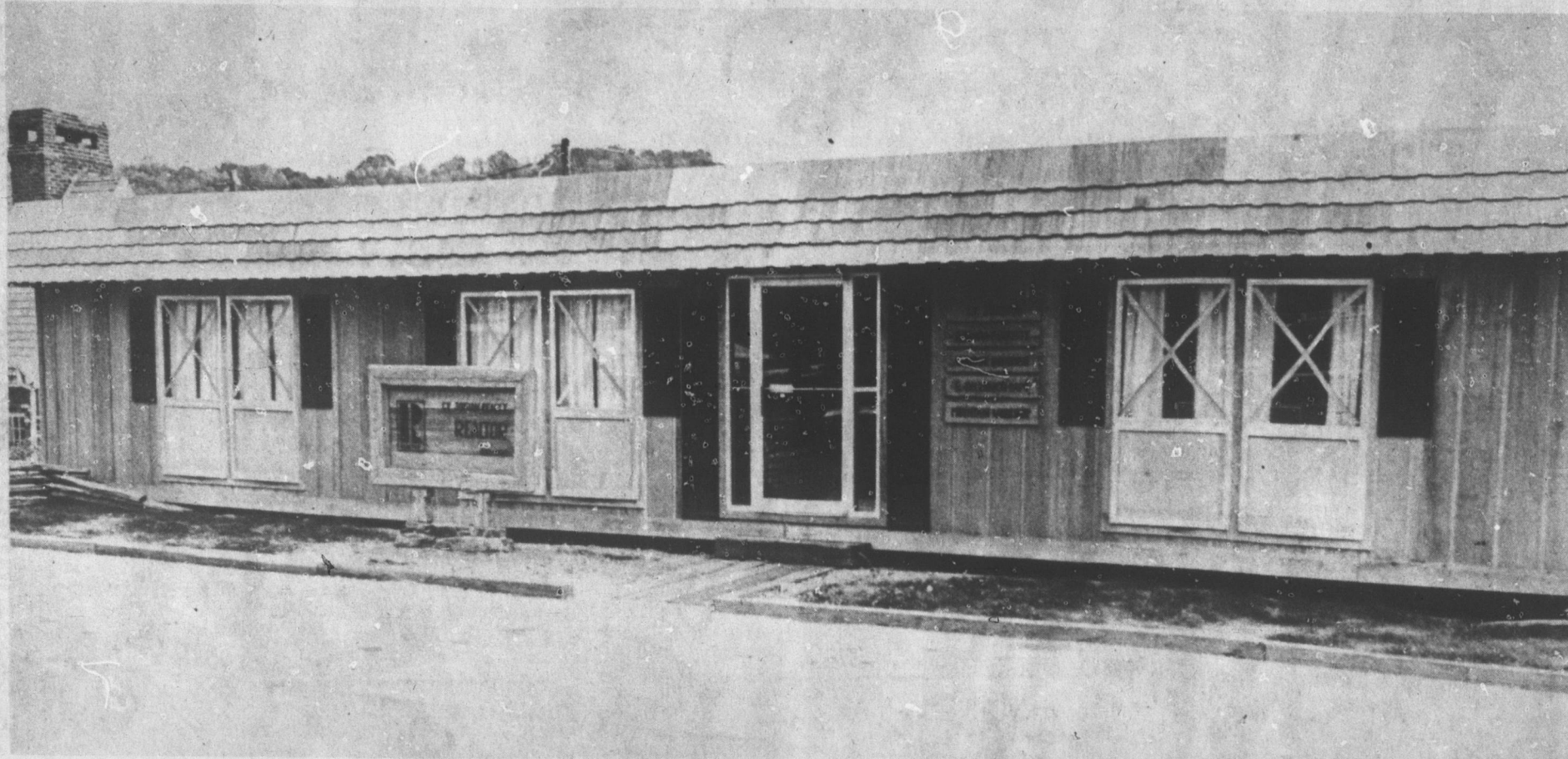


CY JORDAN REALTY -



REALTOR



Cy Jordan, Broker 682-2704

Wanda Proffitt, Broker 682-2332

Everette L. Dillingham, Broker 682-2160

Michael Mann, Broker 675-5274

George Downing, Capt. U.S.C.G. Ret.,

Mgt. Broker - Sales Assoc. 682-3779

or 682-3870

**LOTS
FOR SALE**

Office Next To Post Office On Burnsville Town Square 682-6617 682-6711

**ACREAGE
FOR SALE**

ATTENTION FARMERS!

Exceptional farm 16 miles from Johnson City, Tennessee, consisting of 120 acres more or less with approximately 75 acres cleared fenced pasture and tractorable cropland, remainder in woodland. Has two small ponds, barn, frontage on state paved road on one side and private easement to state maintained gravel road on other. Excellent views of mountain ranges. Color photos in office. \$625 per acre with owning financing available. T-120-75-12/25-A

BUILDINGS SITES

Just outside of Burnsville City Limits on McIntosh Branch above Beaver Falls. Magnificent views of the Black Mountain Range and Burnsville below. Gravel road access to all parcels. Altitudes from 3100-4000 feet plus. All properties face South. 35 acres at \$1,200 per acre, 21 acres at \$1,100 per acre, 15.08 acres at \$14,750, 4.73 acres at \$7,950. All parcels are surveyed and staked. Y-1-50-10/10-A

On Seven Mile Ridge, two 40 acre more or less tracts. Superb view to Mt. Mitchell and Toe River Valley. Numerous choice building sites on each tract. Just off paved road. Roads roughed in through property. \$1,275.00 per acre, owner financing with 25% down, five years, 8 1/2% interest. Y-9-40-51-12/31-A

BUY BRICK FOR BEAUTY AND STRENGTH

Four bedroom home in excellent condition, living room has fireplace, family room adjoining kitchen, 2 1/2 baths, full basement, carport. Many fine features require your inspection. \$39,500. Y-2-5-39-5-12/2-B,SS,SF,D

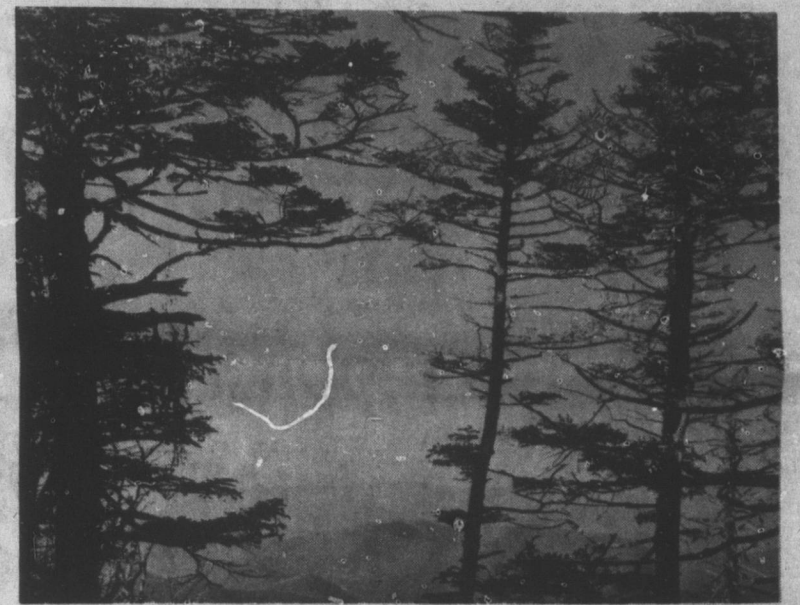
FISHERMAN'S HAVEN!

Catching trout from your front door? You could if you owned this 65 acres more or less with over 2,000 feet on rushing Cane River. Many fine homesites with magnificent views overlooking river. Several acres pasture and farmland under lease. \$29,750 with financing by owner. Y-3-65-29-75-1/10-A

Beat the energy crisis--buy this four bedroom, two bath house on West Main Street, built when good building materials were plentiful and workmanship was the style. Suitable for residence or commercial. \$35,000. Terms negotiable; owner will consider financing. Y-1-3/4-35-12/2-F,1 1/4 S,SF,D

Five room chalet home. Deck around half of house. Completely furnished. Excellent view. Located in excellent neighborhood and only a few miles from Burnsville. \$39,500. Y-6-1-29-7-2/24/75-F,SS,SF,D

Seven miles from Burnsville--excellent view of Toe River and distant mountains; 23 acres fronting on Highway 197; will sell as whole or in 3 to 5 acre tracts. Fronts on Toe River. Y-5-23-31-3-11/26-A



This offering of choice building sites, all with beautiful views of the Black Mountains and Seven Mile Ridge, is a rare opportunity to be among the first investors in what is surely to become an outstanding mountain community. No words can express the beauty of this property so we urge you to see for yourself. Call us today. We'll be happy to take you to Mount Celo Acres and let the brooks, trees, and views do the selling for us.

MT. CELO ACRES

Take N.C. 80 to Celo Community and Chrisawn's Store; turn West on Upper Brown's Creek Road. (Our sign is on the corner.) Go to the end of the black top and 1/10 mile farther. Call our office if you would like a salesperson to meet you there. Free plats. Call us or go out today. See the color and the view.