

**Pollard's Drug Store**  
Dici: 682-2146 Burnsville, N.C.



**PHARMACY COMMENTS**

Your Rx Specialists:  
Charles Gillespie, Jr.,  
and Ferril McCurry

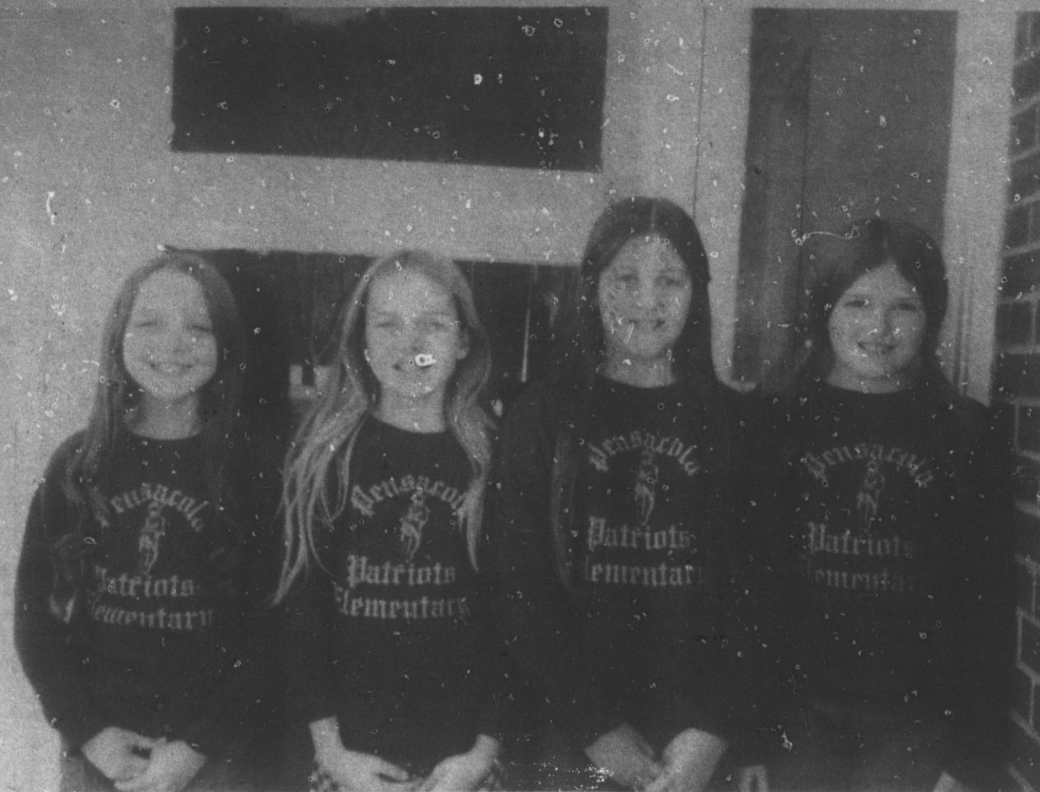
**Autographed Picture Included in Letter from Santa**

Surprise Y'all! Your child's letter to Santa this year will be answered by St. Nick, himself. In addition, letters arriving early enough will receive a special gift by mail — an 8 1/2 x 11 autographed picture of Santa.

Just send your child's letter for arrival on or before Dec. 21 and include a stamped, self-addressed envelope to help Santa with his Christmas rush. Address all letters to Santa Claus, c/o this drug store, Santa's Letter Department, Box 5051, Raleigh, N.C. 27607. And Merry Christmas to All!

Santa Sez: Watch out for tots who are attracted to colorful Christmas decorations — especially to plants and xmas cuttings such as mistletoe, holly, poinsettia, and pyracantha. Each of these popular seasonal items is poisonous when ingested. So, don't let your "tots" take the "merry" out of Christmas. Stay alert, but have fun!

We try to give you the best prescription service possible at the lowest price. Always feel free to call us.



**Pensacola 4-H Officers**

Pensacola 4-H Club is planning a busy and exciting year. Wildlife Study is the project being worked on at present, and Mr. Joe McFee and the Wildlife Commission will be showing films. A roadside clean-up drive is slated for the future. Officers were chosen for the year and are (pictured left to right) Jackie Williams, President; Beth Wilson, Vice President; Michelle Fender, Secretary; Angella Anglin, Reporter.

**Letter To The Editor**

Dear Editor:

Please print this letter as only a sampling of the many nice letters and notes being sent to the Chamber of Commerce about our "facelift" project:

Yancey County Chamber of Commerce  
Burnsville, North Carolina

"Gentlemen; Enclosed is my little mite which I ask you to add to the Square 'Facelift' project."

"It is most commendable of the Chamber to undertake the beautification of our square project. It is something we and our visitors can enjoy and be proud of for many years to come.

"My sincere thanks for the efforts of many citizens and wishing for a speedy conclusion of a successful fund appeal.  
Very sincerely, Glenn A. Morris"

Dear Editor:

There has been a lot of misunderstanding and rumor about the Burnsville-Spruce Pine Hospital building program. The article elsewhere in this issue should explain what problems and solutions have taken place. Additional facts that the people of the county need to know are these:

[1] The delay in getting the contracts signed for nine months while building costs soared out of sight was the fault of the Federal office in Atlanta, not the Administrator or Board of the hospital.

[2] The division of what funds we have been very fair to both counties; Spruce Pine and Burnsville will each build now only a portion of the total plan.

[3] Work is already underway to go after further government and foundation funds to let us get the full building program eventually.

[4] Hill-Burton monies would be lost to us if we failed to go ahead with the plan approved by the Medical Care Commission right now. After July 1, 1975 we could no longer count on them for the major part of the funds needed. This will provide the additional beds needed in both counties, and once we have these it may be easier to find outside financing for the Emergency, Laboratory, Outpatient, Operating Rooms and other services which had to be cut from the present building program. The trend of Foundation grants now seems to be toward encouraging out-patient and special services rather than any more beds. We do well to get our beds now.

[5] The present Yancey Hospital will not be closed, contrary to rumor, in the foreseeable future. Only when the Burnsville facility is completed as originally planned will the present Hospital be phased out.

[6] The only reason work is underway in Spruce Pine first is because the Burnsville plans had to be reworked. Construction will begin here by early Spring and the scheduled completion date for both counties is the same.

[7] Putting the needs of the two counties together under one hospital system is a new progressive approach to health care; we are a pilot program and will be watched by counties throughout the state and beyond to see if we can make it work. We all need to get into the habit of thinking of the two hospitals as just separate buildings of the same hospital, each with its special service.

The Yancey Unit is not a nursing home for the elderly. It is for sick people who need a long stay in the hospital but are over the acute stage of their illness. This frees beds in the other unit for acute, emergency and post operative conditions. Some acute cases will also be allowed in the Burnsville Unit eventually.

The Board of Directors contains an equal number of members from each county. Every Board member must feel that he is a director of the whole system, not just the part in his own county. It takes time and effort to develop this feeling. We have tried to go it alone, and the Yancey Hospital has had a hard time trying to provide all the services needed and to maintain the high standard of excellence demanded by the State Medical Care Commission. We are committed to trying it on a regional basis and this was the understanding when people were asked to give and pledge money in the original fund raising drive. That concept has not changed, and it is hoped that the public will want to continue to honor such pledges; the need is greater than ever.

Mary Ohle, Community Relations Chairman  
Blue Ridge Hospital System

**THE YANCEY JOURNAL**

Box 667  
Burnsville, N.C. 28714  
Ed Yuziuk-Publisher  
Carolyn Yuziuk-Editor  
Patsy Randolph-Manager  
Brenda Webb-Staff

Published Every Thursday  
By

Twin Cities Publishing Co.  
2nd Class Postage Paid  
At Burnsville, N.C.  
Thursday, Dec. 12, 1974  
Number 50

**Subscription Rates By Mail:**

In Yancey County	
One Year	\$5.00
Six Months	\$4.00
Out of County or State	
One Year	\$7.00
Six Months	\$6.00

**Our Sweet Tooth Shows**

Sugar consumption in this country has more than doubled in the last century. We now consume, on the average, 102 pounds per person a year, notes Rachel Kinlaw, extension food specialist, North Carolina State University.

Mr. Milton Burleson, President, Board of Trustees, explains the unfortunate but necessary steps which had to be taken to get construction started.

Both the Yancey Hospital and the Spruce Pine Hospital have had to take a reduced scope in the original plans for the two buildings which was approved in March, 1974. After the project approval by HEW the architects were required to wait 90 days after bid advertisement before the bids could be opened. The bids were open in June at a low bid construction cost of \$7,781,598.00. In order to reduce costs, a number of

**Folk-Ways and Folk-Speech**

of SOUTHERN APPALACHIA  
with Rogers Whitener

Water witching or divining continues to strike a responsive chord in Folk-Ways readers. Letters, both of a relating and inquiring nature, in goodly number have found their way to Box 376.

A particularly interesting letter from Erwin D. Stephens, of Charlotte, North Carolina, relates his own experience with divining and reveals a considerable amount of research in this folk practice.

**WATER DIVINER**

"I was spending a couple of weeks at Uphar just west of Boone in the summer of 1973. I had a couple of adjoining lots on which I wanted to find water. I had been interested in water divining since I was a teenager. I learned that Dave Hodges of Boone could divine water with a forked stick. He came one afternoon and within a few steps the forked stick turned downward with considerable force. I told him to let me try it. Holding the forked stick with a little tension, thumb outward and hands upward, I made a few steps and suddenly at the same spot I felt the downward pull. I cut a new fork and at one place the pull was so strong that the bark slipped on one end of the stick.

**ONE IN FIVE CAN DO IT**

My friend from Yanceyville was at his adjoining place, so I instructed him on holding the stick and he felt the same downward pull at the very same spots as I and Dave Hodges. His daughter, an artist, could feel nothing. Then I instructed her to hold the left end of the stick and I held the right end and placed

my left arm on her shoulder. When we came to the same spots the rod exerted its downward pull. We experimented and found the same results; alone she could feel nothing. With her father or me holding one end, the pull came with considerable force. Later we found that some persons could feel a slight pull while others could feel nothing and others felt a strong pull. Dave Hodges and the others experimenting, followed up by later experiments at other places, are convinced that one of each five persons can feel this hydrokinetic action.

"Many years ago historical novelist Kenneth Roberts, wrote a book on water divining in Maine, for he firmly believed in the art. The Russian scientists have designed metal diviners a little more sophisticated than the forked stick, no batteries or electronics, and are locating water in various areas of Siberia, along with metal deposits. Rivers do not affect the instruments except near the banks.

**ANY KIND CAN OPERATE**

"Any kind of forked stick will operate in the hands of the person gifted with the ability. I have found a coat hanger, with the horizontal bar removed, very effective, also a stiff wire bent so that slight tension can be attained. Research indicates the Egyptians were water diviners several thousand years ago.

"I became interested in this divining when during my boyhood a neighbor dug a well 40 feet deep and found only dry dirt. He got a water diviner who told him to dig



about ten feet away from the dry hole. He did and at 20 feet found a supply of water which has been ample for the past 50 years.

**PREDICTIONS VARY**

"None of the folks I know who have the gift will predict the amount of water nor how deep in the ground, although I have heard of water diviners who do estimate the depth and flow. A cottage adjoining the one I mentioned at Boone has a well found by a diviner, and this well furnished four families, although it is 200 feet at least above the level of Boone.

"I don't think the common belief that water divining is a folk superstition is valid. I am convinced a great many people, unknown to themselves, have the gift of hydrokinesis, just as some have a similar gift in psychokinesis, which is now being admitted by the scientific community."

Please send all material to Rogers Whitener, Folk-Ways and Folk-Speech, Box 376, University Station, Boone, N.C. 28608.

**Hospital Construction Starts Immediately**

(Editor's Note: This "news release" from the Blue Ridge Hospital Systems, Inc. arrived at the Journal office too late for inclusion in last week's edition of the paper. In order to inform our Yancey County readers of current events, we are printing the release this week in its entirety. A letter from Mary Ohle, printed under "Letters to the Editor" attempts to present the bright side of what many feel to have been an acutely disappointing development in obtaining adequate hospital facilities for Yancey County.)

The long drawn out, uphill, down hill, planning and finally approval of the Building Program for the Blue Ridge Hospital System, Inc. came to a final realization on Tuesday, November 26, 1974; at least in part. The Board of Trustees held a special meeting to meet with the architects, consultant, and the contractors to sign the contract for the first phase of the construction. Word had been received on November 19 that all the "red tape" had been completed by both Medical Care Commission and HEW, Atlanta.

After several hours of meetings, consisting of explanations and contracts bids and financial discussions the Board of Trustees voted unanimously to approve the contract and immediate work would begin on the first phase of construction. This phase will consist of a new three story addition to the Spruce Pine Hospital. J.I. Cornett, general contractor, of Elizabethtown, Tennessee has at this writing moved equipment and work on the grounds around the hospital has already begun.

Mr. Milton Burleson, President, Board of Trustees, explains the unfortunate but necessary steps which had to be taken to get construction started.

Both the Yancey Hospital and the Spruce Pine Hospital have had to take a reduced scope in the original plans for the two buildings which was approved in March, 1974. After the project approval by HEW the architects were required to wait 90 days after bid advertisement before the bids could be opened. The bids were open in June at a low bid construction cost of \$7,781,598.00. In order to reduce costs, a number of

changes were made in the contract document and the project was readvertised and bids opened again on August 8, 1974, with 8 sub-contractors, as well as general contractors. The low bids this time were \$8,054,971.00. The total funds available were \$5,887,000.00.

In order to salvage as much of the project as possible, the architects and hospital representatives negotiated with the low bidders and on September 16, 1974 met with Medical Care Commission and Duke Endowment in Charlotte, where the following proposal was made:

1. Reduce the scope of the hospital portion of the Spruce Pine project by omitting the expansion of the dietary, emergency, obstetrics, the operating, radiology and the pathology departments in this first stage. The revised project would consist of a 58 bed wing, new central sterile supply, plus a new boiler plant.
2. The Burnsville Facility would be reduced by omitting the ten observation beds, emergency unit, proposed small radiology and pathology units in the first stage. The building would be redesigned as a one story structure.
3. Continue the project development based on the previously approved feasibility study.
4. Sign the contract with the low bidders for the work on the Spruce Pine Hospital, based on low bids, less negotiated amounts for the work to be omitted. Due to the original plans of this unit having been done in 3 stages it is not necessary that those plans be redrawn.

This proposal is what was submitted to HEW on September 18 and is what had to be approved by them before it could be approved by the Board of Trustees and contracts awarded. Mr. Burleson goes on to explain difficulties encountered in making this entire project a reality; as well as, how very close our area came to losing the expansion of our health care facilities. He says he feels a letter recently received by Mr. Jim Anglin, Vice President of the Board, from Mr. I.O. Wilkerson, Director of Medical Care Commission (now known as Facility Services, Dept. of

Human Resources; will help everyone understand more clearly just why the project has had to start in Spruce Pine before the redrawing of the Burnsville facility was ready.

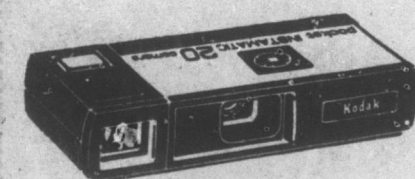
The letter reads in part as follows:

"Mr. Anglin, I believe we both know the most current plans as a 'go or no go' situation. Either the board and people of the community accept the reduced scope of the project or it appears that there will be no project. In my opinion, after all the work that has been done and services that the project can provide for the area, it would be most regrettable to opt for 'no go'. As you know, there are two urgencies: (1) contracts must be awarded within a relatively short period, and (2) Hill-Burton funds, both loan and grant, are available for a short period of time and will revert if not encumbered.

"As you know the project represents the culmination of many years of planning which involved Medical Care Commission, Duke Endowment and the Boards of Trustees of Yancey Hospital and Spruce Pine Hospital. The result of this planning has been the Blue Ridge Hospital System, Inc., which establishes an 'umbrella' organization for the purpose of operating the facilities in Burnsville and Spruce Pine, as well as all surrounding areas, upon the completion of construction. This has been an unprecedented effort and one which has attracted attention all throughout the State because, it is an example of comprehensive health planning in action."

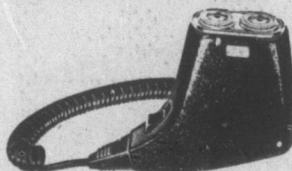
"It is most regrettable that the scope of the project must be reduced. Yet, we believe that the reduced project can serve as a necessary foundation upon which additional services may be built in the future when additional funds are available."

**Christmas Gift Specials**



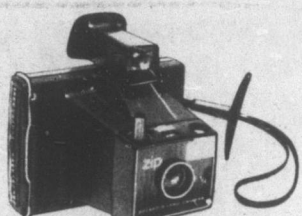
**Kodak Camera's**  
Smile Saver Kits  
Instamatic 10  
Instamatic 20  
Instamatic 30  
Instamatic X15  
Pocket Cameras

**Electric Shavers**



**Remington**  
Norelco Schick

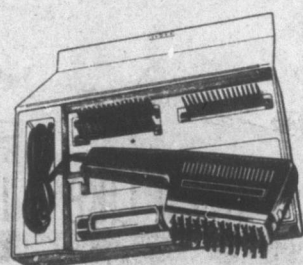
**Polaroid Camera's**



Model 420 Model 430  
Model 440 Model SX70  
Model SX 70-2  
Square Shooter 2

**Polaroid Film**  
All Size's

**Hair Styling Dryers**

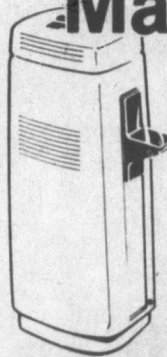


**Remington** **Max**  
**Brother** **Northern**  
**Norelco**

**Snoopy**  
**Mickey Mouse**

**Electric Tooth Brushes**

**Hot Lather Machines**



**Schick**  
**Gillette**

**Timex**  
**Watches**



**Large Selection**  
**Electric Quartz**  
**Regulars**

**Mr. Coffee Drip**  
**Coffee Brewer**

**Amity**  
**Bill Folds**  
**Key Cases**  
**Men's Ladies**

**Cosmetics For**  
**Men And Women**

**All At Discount Prices**

**POLLARD'S**

**Drug Store**

**Burnsville**

**Phone 682-2146**