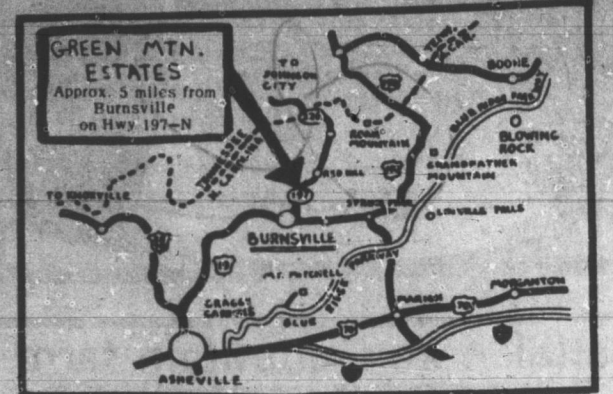


Green Mountain Estates

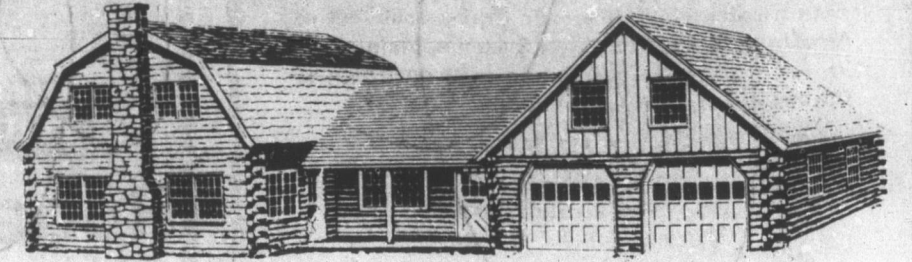
Real Log Homes



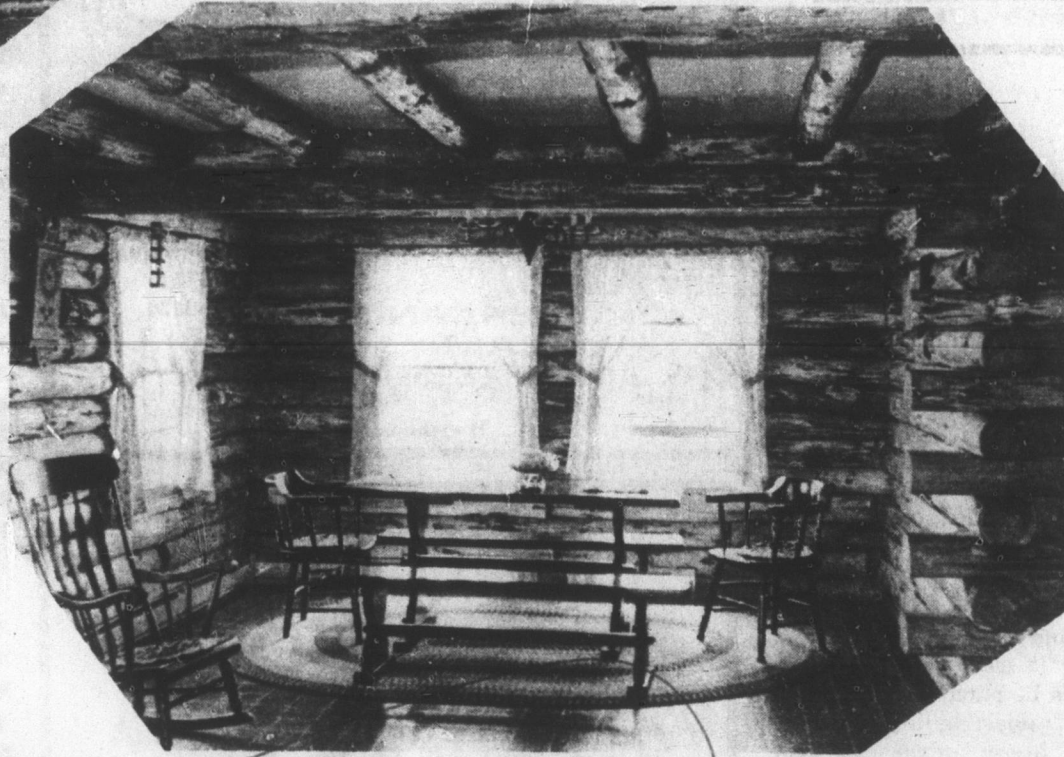
Fit Any Dream -



Comfortably Rustic, Your Real Log Home Brings New Carefree Year-Round Living. Complete Pre-Cut Log Packages Are Cut From 8" to 11" Diameter Logs. You Can Build Your Own Dream, Or Rely On Your Contractor. Choose From 29 Models-Compact Hideaways To Full Two Story All Season Homes.



a brand new very old idea



Real Log Homes
Acreage
Homesite
Building Lots
Construction

Your most cherished dreams can become exciting reality this year when you choose to build your real log home.

here are just 3 examples

Real Log Home models located at Green Mtn. Estates for inspection

Old Fashioned Log Raising

Refreshments **OPEN HOUSE** MUSIC
"Log Home Party"
Come And See The Actual Building Of A Real Log Home

West Main Street In Burnsville, N.C.
On Corner Opposite Mt. Mitchell Motel, 3 Blocks West Of Town Square
AUGUST 6th and 7th

By HORTON CONSTRUCTION AND DEVELOPMENT CO.
P.O. BOX 171, BURNSVILLE, N.C. Phone 704-682-6720 or 682-6211

See this beautiful, comfortable, rustic, year round Real Log Home being built by Horton Construction Co. (Franchised Dealer for Carolina Real Log Homes, Inc.) for Mr. and Mrs. Ferrill McCurry, proprietors of The Lamp Post Shop, located West of Town Square.

In addition to our 27 different models of Log Homes Horton Construction and Development Co. can build any type home you desire, your plans or ours, we can give you a complete package ready to move in or a shell on a scenic homesite in Green Mountain Estates—only 5 miles North of Burnsville by Hwy. 197 where we have 2 new Real Log Homes ready to occupy—2 bedroom, 2 bath, on scenic homesites, year round roads, phone, electric, stocked lake, common green, restrictive covenants. \$33,000 to \$35,000.

We also have a beautiful 51 acre farm, good house, streams, barn, trout pond, tobacco, etc. For sale or lease.
Income Property—8 apartment units. Yield \$13,000 annual gross. Nice tax shelter.

Several other acreage tracts—10 to 65 acres.
5% Discount on homesites, and 2 Real Log homes now ready to occupy. Let me show you these beautiful properties today.

Ask About our complete plan kit \$3.00 each



THE TYSON

A delightful small cabin, ideally suited for vacationing or as a home for one or two people.

THE PLYMOUTH

Casual comfort, year-round, is the key to this charming home. 1536 feet of living space, four bedrooms, 1 1/2 baths blend modern convenience with rustic styling.

For larger families, a more elaborate log home with four bedrooms. This can be the ultimate answer to your desire for the Carefree Country Life in a Real Log Home.

Open your door on a clear summer morning, smell the fresh forest air and gaze at the sunlit mist rising from the mirror stillness of a crystal lake, shrouding the distant mountains. Enjoy the true meaning of Carefree Country Living.

Your most cherished dreams can become exciting reality this year when you choose to build your real log home.

Log construction with its stout walls offering comforting protection from the untamed elements has been the one enduring truly American architectural style. The rustic practicality of log homes appealed to the early frontiersmen and trappers as they cleared our wilderness. Log buildings were chosen because they were simply constructed and easily erected with a minimum of time, tools and skill.

If you are planning to build your country home, a second home to unwind and rediscover yourself in, a home suitable for the ease of retirement living or an investment property, consider today's Real Log Home—the home with a built-in heritage. A Real Log Home is attractively designed for maximum rustic charm, comfort and convenience and is maintenance free. Relax luxuriously, entertain just for the fun of it with Carefree Country Living in a Real Log Home.

Horton Construction Co

Franchise Agent For Carolina Log Buildings
P.O. Box 171 Burnsville, N.C. 28714
704-682-6720 or 704-682-6211

PLEASE SEND ME MORE INFORMATION ON YOUR:

- Carolina Real Log Homes
- Homes-Property For Sale
- Enclosed Is \$3 For Your Complete Plan

Name: _____
Address: _____
City: _____ State: _____ Zip: _____

OPEN HOUSE
Be sure Be Sure to visit our model Log Homes in Green Mountain Estates, 5 miles on Hwy 197 North of Burnsville to 'OPEN HOUSE' sign
5% Discount on all Properties Sold During August 6th and 7th
HOMES, HOMESITES, FARMS, ACREAGE. 29% DOWN PAYMENT. TERMS ON BALANCE. Does Not Apply To Log Kits.