

MURPHY LIBRARY
MURPHY N C
SAMPLE

HAPPY NEW YEAR

Nantahala Rate Refund Hinges On Big, Big If

FRANKLIN - The Nantahala Power and Light Company today said it would rescind an 18 month old rate increase and refund nearly \$1,200,000 to approximately 18,000 customers.

Nantahala said its offer is contingent on the prompt completion of the sale of its distribution system to Duke Power Company, which the North Carolina Utilities Commission approved on Dec. 17.

John M. Archer, Jr., President of Nantahala, explained the Company's position in agreeing to roll back the rate boost in effect since July 16, 1961. In reply to inquiries from the press, he said:

"When Nantahala put the increased rates into effect, it felt --- and it continues to feel --- that this action was necessary and proper in order to immediately reimburse the Company for seriously inadequate revenues. However, the transfer of Nantahala's distribution facilities to Duke will eliminate the need for heavy new investments in generating equipment which we anticipated would be required by 1965 in order to continue to serve the area. Consequently, despite the propriety of our action, we now feel it possible to give up the rate increase if the properties can be transferred promptly.

"Plans for refunding money to customers are being prepared, and it is contemplated that payments will be made as soon as possible after the transfer to Duke is completed."

Mr. Archer also commented on criticism directed at Nantahala regarding retention of its hydroelectric facilities. He pointed out that the Company has offered to sell these facilities, but that a suitable purchaser has not been found. He added:

"Duke turned down our offer to sell the plants because they considered them relatively inefficient and uneconomical in comparison with today's modern power plants. Duke already has modern efficient plants capable of assuring adequate power for this area for years to come.

"Other parties, including representatives of the public group, with whom the matter was discussed indicated no interest in purchasing our power-producing facilities. It is also true that these dams and powerhouses could be condemned and purchased through court order if it were found necessary in the public interest."

The sale to Duke as approved by the Utilities Commission is in the best interest of all concerned, Mr. Archer as-

serted. He said it paves the way for attracting new industrial development with an assurance of adequate power.



MURPHY LIONS John Savage, Newt Boling, and Hadley Dickey are shown left to right above, preparing to deliver the first of 122 Christmas baskets distributed to needy families in this area by the club. The floor in the old Economy Clothing Store building on Tennessee Street was covered with baskets, stacks of potatoes, corn meal, and boxes of bread.

The project is an annual Christmas affair for the Murphy Lions Club. (Scout Photo)

THE CHEROKEE SCOUT

AND CLAY COUNTY PROGRESS

Volume 73 - Number 22

Murphy, North Carolina, Thursday, Dec. 28, 1962

8 Pages This Week

Published Weekly

SECOND CLASS POSTAGE PAID AT MURPHY, NORTH CAROLINA

Lions Club Baskets Brighten Christmas For 122 Families

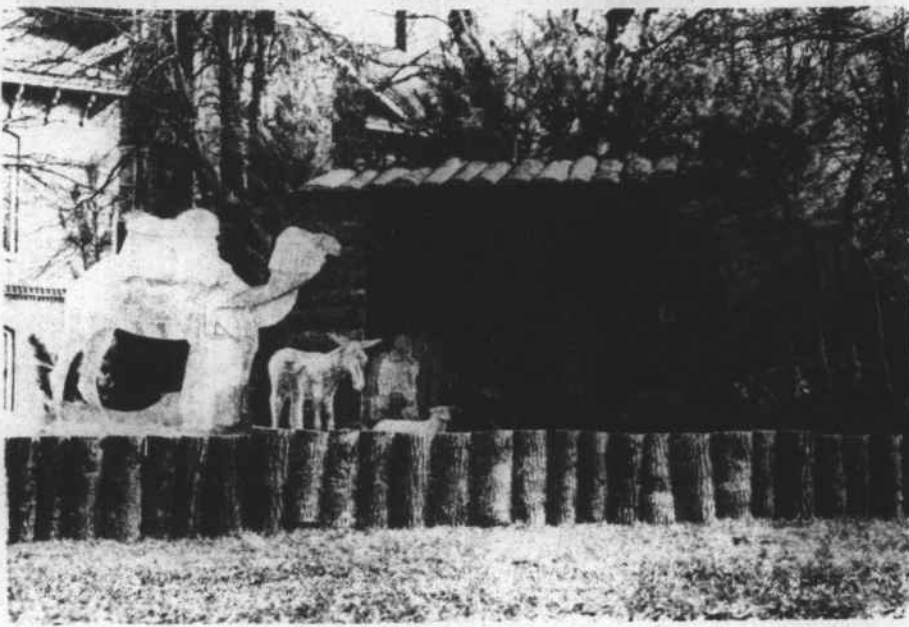
The Murphy Lions Club played Santa Claus to 122 area families this Christmas as the club distributed food baskets to the deserving, but needy people.

Lions Club members converged on the old Economy Clothing Store building Friday night, Dec. 21, to pack the baskets, Christmas baskets for the needy has been an annual project of the local club for many years.

The baskets contained some thirty different items. Included were oranges, apples, stick candy, sugar, lard, macaroni, tomatoes, margarine, corn, hominy, green beans, cooked cereal, kraut, peaches, salt, sausage, chewing gum, corn flakes, peas, canned milk, flour, coffee, bread, pinto beans, snuff, sweet milk, instant coffee, meal, and rice.

New Boling, chairman of the Club's Christmas Basket committee, expressed his thanks to all the club members and citizens who participated in this year's project. W. D. Townson of Murphy donated the corn meal; Kern's and Bond Bread companies gave the bread; snuff was donated by W. C. Ford Co., and the Brunton Co.; Cliff Kephart of Murphy, donated 30 baskets and 60 cartons of pure lard; Dickey - Crain Wholesale Co. donated 120 ten pound sacks of White Silk Flour; Wade and Virgil Decker of Decker's Grill in Murphy gave two cases of canned corn; the Hackney - Carolina Co. gave 60 pounds of JFC coffee, which was matched by the coffee company; and the Herman H. West and Co., made a cash donation. The remainder of the baskets were financed through donations of the Murphy Lions Club members.

The retail value of each basket was estimated at \$12.50.



NATIVITY SCENE on the Courthouse lawn in Hayesville sings out a warm "Welcome Home" to those returning home for Christmas. (Scout Photo)

Nativity Scene Greets Returning Clay County Folk Like No Other

SPECIAL TO THE SCOUT AND PROGRESS HAYESVILLE - The mountains of Clay County are a Christmas holiday destination for dozens of home-comers from jobs and schools off in the "flatlands."

Winter puts a Christmas patina on the Blue Ridge country like no place else, and although there are Christmas decorations in towns all along the highways home, few of them have the fully wrapped up Christmas emotion package like one sitting on the Courthouse square in a hometown.

For four years, one of the most rustic and peacefully beautiful nativity scenes any Clay County citizen can remember has greeted them on this end of the Christmas trek home.

There are more elaborate displays, certainly --- this one is made of slab and evergreen, 16 feet long and 8 feet deep with three-quarter scale figures; but Art Murray, designer of the Hayesville Nativity Scene, has a typical answer in discussing dimensions: "How big a package do you need for the feeling you are supposed to have about Christmas?"

For the past two years, the display has been a Christmas project of Lidsen of North Carolina, Inc., a Clay County industrial citizen since 1956. Edwin Lidsen, president of the company, was one of the original movers of the project. Merchants, businessmen and churches cooperated in starting what is now a traditional Christmas display in Hayesville.

Lidsen employees took over constructing the crib of slab, surrounded by evergreen trees and lighted with an ingenious arrangement of interior and exterior colored spots, the week before Christmas, 1962.

December 14, plant employees were sent from their plant jobs at noon to do the major construction. Murray, Plant Superintendent, put on finishing touches that evening.

The Nativity scene is now on the Courthouse square here, a spot of soft color late at night when the home-bound cars come onto the Hayesville square.

As one Hayesville citizen said the first evening the display was lighted, "... it looks nice."

JFK Recognizes Dr. Staton For 20 Years Service

HAYESVILLE - Dr. L. R. Staton has served as Medical Advisor to Clay County Local Draft Board for the past twenty years, examining registrants at their request, free of charge. Dr. Staton has received the following letter from Selective Service Headquarters in Raleigh:

"The President of the United States has awarded you a Certificate of Appreciation in recognition of twenty years of service which you have rendered to the Selective Service System. It is transmitted herewith and a twenty-year lapel button is also being forwarded to you under separate cover.

"Few people achieve the distinction of rendering an

important service to their community, state and nation over such a period of years. As one of that few, you can justly be proud of the nation and the service you have rendered and this recognition of it. It gives me great satisfaction, as one who has been associated with you during this period of service, to transmit this recognition of it. I sincerely hope that the certificate and lapel button will provide you with the same measure of personal satisfaction.

"I offer my sincerest congratulations and best wishes. Sincerely yours, Thomas H. Upton Colonel, AUS Retired, State Director.



Dr. L. R. Staton

Scout Employees Christmas Party Held Last Thursday

Mr. and Mrs. Jerue Babb entertained the employees of The Cherokee Scout at a dinner party in the Regal Hotel on Thursday night, Dec. 20.

The dining room was decorated with the traditional Christmas greenery and red and white candles. Tables were covered with white linen and centered with holly and candles.

Those attending were Mr. and Mrs. Jack Owens, Mr. and Mrs. Jimmy Simonds, Mr. and Mrs. Franklin Kilpatrick, Mr. and Mrs. Bill Tipton, Mrs. Dixie Palmer, Miss Hattie Palmer, Mrs. Frances Welborn, Miss Ida Arrant, Miss Joyce Hembree, Freddie Davis, Weaver Carringer, Carl Henson, and James Caldwell.

Gifts were presented to Mr. and Mrs. Babb and Mr. Jack Owens from the employees. After the gifts were presented, the group went to the home of Mr. and Mrs. Babb where they enjoyed listening to music.

Clay Ballot Boxes Sealed Pending Probe

RALEIGH - The Clay County Board of Elections was directed Friday to seal all ballot boxes containing votes cast in the November 6 election, pending completion of an SBI probe into alleged misuse of absentee ballots.

William Joslin, chairman of the State Board of Elections, also requested that the list of absentee ballots cast in each precinct on election day be sent immediately by registered mail to the state board.

"This action will protect voters who cast lawful absentee ballots and will preserve evidence of any absentee ballot law violations," Joslin stated in a telegram to B. M. McClure, chairman of the Clay Board. Copies were sent to other board members.

The State Bureau of Investigation began a probe, Joslin said, after some Ohio residents who formerly lived in Clay reported that they were approached by persons from Clay asking them to authorize that absentee ballots be cast for them.

Joslin directed that the ballot boxes and absentee ballot envelopes be stored in the vault of the Citizens Bank and Trust Co. at Hayesville.

He asked that McClure promptly call a meeting of the Clay board for the purpose of sealing the ballot boxes.

Joslin said the boxes and absentee ballot envelopes should be in joint custody of the Clay board and bank. He added these "should be made available for examination on request of the State Board of Elections."

Local Clay Girl Stars In Pfiffer College Play

MISENHEIMER - The Pfeiffer College production of Eugene O'Neill's "Long Day's Journey Into Night" is well done, deeply stirring.

It's encouraging to find that besides displaying skills with balls and hoops, North Carolina colleges today compete through dramatics in realms of the mind and spirit.

The feeling opening night was that this mad world was not Eugene O'Neill's but the world within all of us.

For three hours and a half, the four on stage poured out bafflement at the mockery of destiny. They relived old horrors and old joys. They fought each other in fury, human animals penned together in life.

It was a delight to see Miss Beadles bring up the mother, sharp and intense, in front of you. The tiniest of clues, in eyes and speech, foretells her frightening separation from reality that will later highlight the play.

A senior and a pre-med major, Miss Beadles, of Hayesville hopes to become a medical missionary. Tisdale, of Burlington, is a senior, majoring in English with a dramatics major.

Best for this member of the audience were Linda Beadles as the neurotic, drug-tortured mother and Tom Tisdale as the poetic, tuberculosis ridden younger son.

Hospital Notes

Patients admitted to Providence Hospital: Joyce Luther, Andrews; Joe Palmer, Rt. 1, Marble; Mrs. Bessie De-weese, Murphy; Jack Chastain, Hayesville; Rev. Francis Ellis, Murphy; Troy Bradford Roberson, Murphy; Harry C. Bagley, Rt. 4, Murphy; Reba Roberts, Rt. 1, Murphy; Dale Lee, Murphy; Marilyn Ramsey, Murphy; Mrs. Donnie Morrow, Murphy; Lumas L. Godfrey, Rt. 3, Murphy; Kirby Ladd, Rt. 1, Marble; Alex English, Rt. 2, Murphy; Mrs. Ernest Hughes, Rt. 2, Murphy; Mrs. Annie Powers, Murphy; Mrs. Mattie Arrant, Brass-town; Bill McClure, Rt. 1, Marble; Mrs. Vadine Ware, Rt. 2, Cullerston; Connie Craig, Rt. 4, Murphy; and Lonnie Wright, Rt. 3, Murphy.

PRIZES for the FIRST BABY



HOLIDAY HOUSE - Unique, locally made decorations were the order of the day at the Murphy Garden Club's Holiday Houses this year. Here club members Mrs. Jim Gibbs stands before the fireplace at the home of Mr. and Mrs. Hans Beekens on Dillard Street in Murphy. The mantel is framed with evergreens and pine cones and centered with a Christmas tree made from painted pine cones. (Scout Photo)

Hillbillies Draws A Large Crowd

In spite of inclement weather, 1155 fans came out to see Cousin Alfreed defeat the Mighty Yankee in the first match, and the Scufflin Hillbillies defeat Don Greene and Sailor Moran in a tag team match. Several hundred more fans were turned away.

Approximately \$400 was cleared from admissions and concessions for the Cherokee County Rescue Squad. This money will be used to purchase badly needed equipment and to repair old equipment. The Rescue Squad, in an effort to be self-supporting, will continue sponsoring these wrestling matches.

The next match is planned for Friday, Jan. 11. The fabulous Jackie Fargo will be featured in this match.



GIRL SCOUTS HONOR THE PAST SERVE THE FUTURE