



## Modern New Plant Of AFI To Build Magnavox Stereo, TV Cabinets

One of the most modern and best-equipped furniture plants in the industry has just been completed at Andrews with a total footage of 267,619 square feet. Rough Mill production at Andrews Furniture Industries Inc. is now underway with complete production scheduled in January. By the end of 1966, it is planned to have several hundred employees working in this modern new plant and personnel will be added as rapidly as people are trained in cabinet work.

Located on a 59 acre tract

west of Andrews near Highway 19, this multimillion dollar concrete block/aluminum siding plant was built to process rough green lumber to the finished product of fine furniture cabinetry.

An inventory of three million board feet of lumber will be maintained in the yard with the majority of lumber species from the local area. Primarily this lumber will consist of Appalachian hickory/pecan, poplar, elm, maple, oak and beech. When the rough lumber comes into the plant, it will be unloaded, automati-

cally graded and stacked in the Green Shed, then stored in the yard to air dry. It will then be dried in one of the five modern dry kilns, which have a total capacity of 265,000 board feet. When the lumber is thoroughly dried, it is then moved to the Dry Storage Shed, which has an 800,000 board foot capacity, to await processing through the Rough Mill, where defects are cut out and the boards are cut for length and width.

The manufacturing portion of Andrews Furniture Industries Inc. consists of 143,700 square feet, starting with the Finish Mill, where the lumber is processed through various machines such as the Double End Tenon Machine, Automatic Profile Shaper, moulders, routers, boring equipment and various other machining operations in preparation for the Sanding Department. In the Sanding Department the wood is processed through three fine wide-belt sanding machines, stroke sanders, edge sanders and other sanding equipment before being thoroughly hand-sanded. The wood is then conveyed to the Sub-Assembly Department where the components are assembled using high-frequency gluing equip-

ment to make frames for later use in the Assembly Department. Cases are clamped in the Assembly Department and placed on conveyor belts. Various operations are then carefully performed including hand-sanding, cleaning, inspecting and preparation for the finishing process.

In the Finishing Room, there are ten spray booths with the most modern available curing ovens in the DeBurgh Finishing System. This double deck four-pass high temperature drying oven system will hold 525 pallets.

After the furniture has passed through the many steps of spraying and drying, it is carefully hand-rubbed and conveyed through the Trim and Pack Line where it is again hand-rubbed, touched up, hardware is attached and cases are packed. The Finished Goods Warehouse consists of 28,800 square feet.

The entire plant will operate on steam, using two 309 horsepower boilers which are fully automatically controlled. Other features of this modern plant include a well-equipped dispensary with a nurse on duty at all times, and a canteen with full line of vending equipment in the employee "break area".

## Andrews Furniture Impact On Area Cited By Ferebee

(A man who has been intimately associated with efforts in securing new industry for Cherokee County and who is still directing efforts in this direction comments below of the impact of Andrews Furniture, Inc. upon the economy of Cherokee County. He is Percy B. Ferebee, Mayor of Andrews and President of Citizens Bank and Trust Company with main offices in Andrews.)

By Percy B. Ferebee

Cherokee County is attaining its highest level of economic development with the establishment here of Andrews Furniture Industries, Inc.

With an economy dependent upon manufacturing industries through the years, Cherokee County's greatest decade of progress was sparked in the mid 1950's with the attraction of various diversified industries.

For its immediate impact, and for its long-range benefits, the importance to our county of the establishment of Andrews Furniture Industries, Inc. in Andrews.

Now Andrews can point with pride to a local industry that

will build cabinets for one of the worlds best known stereo and televisions, Magnavox.

This enterprise will open new job opportunities for our youth in a field never before available in the three most southwestern counties of North Carolina.

This enterprise will confront our County and City with major needs for housing, recreation, education, medical and health facilities, and related family activities. . . at the same time affording our County and City the talents of many from the AFI organization who now serve in community programs for progress in these fields.

This enterprise will bring wide attention to Cherokee County as an area that can provide the proper environment conditions for the operation of a successful industry, at the same time serving as pulsating testimony to Andrews as a good place in which to live and work.

Andrews Furniture Industries' enormous investment in dollars and confidence in our County will be a leader for sound economic growth and development in the years ahead.

## A F I To Begin Full-Scale Cabinet Production In Jan.

As the 267,619 square foot plant of Andrews Furniture Industries Inc. at Andrews goes into production, cabinet models similar to those shown on this page will roll from the

assembly lines. Wood finishes in walnut, cherry, and maple are to be utilized. Styling of the cabinets includes Contemporary, French Provincial, Danish Modern and Colonial.



The Magnasonic X-10, in walnut finish



The Magnasonic X-10, in maple finish



The Magnacolor 21-Contemporary, in walnut finish



The Magna Color 21-Danish Modern, in dark walnut



The Toulon 21-French Provincial, in distressed cherry

## Plant Manager Reed Pro In Woodworking Industry, Attributes Success To Father

Plant Manager of Andrews Furniture Industries Inc., Lewis O. Reed was born and raised in the woodworking industry in historic Gettysburg, Pennsylvania. Lew's father was in the woodworking furniture manufacturing field for 48 years and trained Lew at the Old Gettysburg Furniture Company. After graduation from high school, Reed took special courses in Business Management, Quality Control and Accounting, but attributes his most important education to his father's efforts.

According to Reed, "Moving to Andrews was just like coming home. The people are wonderful and I'm looking forward to working with them for many years." An avid sportsman, Lew loves the country and small town life and stated that he had never found a community more receptive and helpful to strangers than Andrews. His favorite pastime is camping out with his wife and three children. Inclement weather is no deterrent to the Reed family, who camp out in a tent or sleeping bags, winter and summer. Lew and his wife, Rose, have spent many years working with the Boy Scouts, and

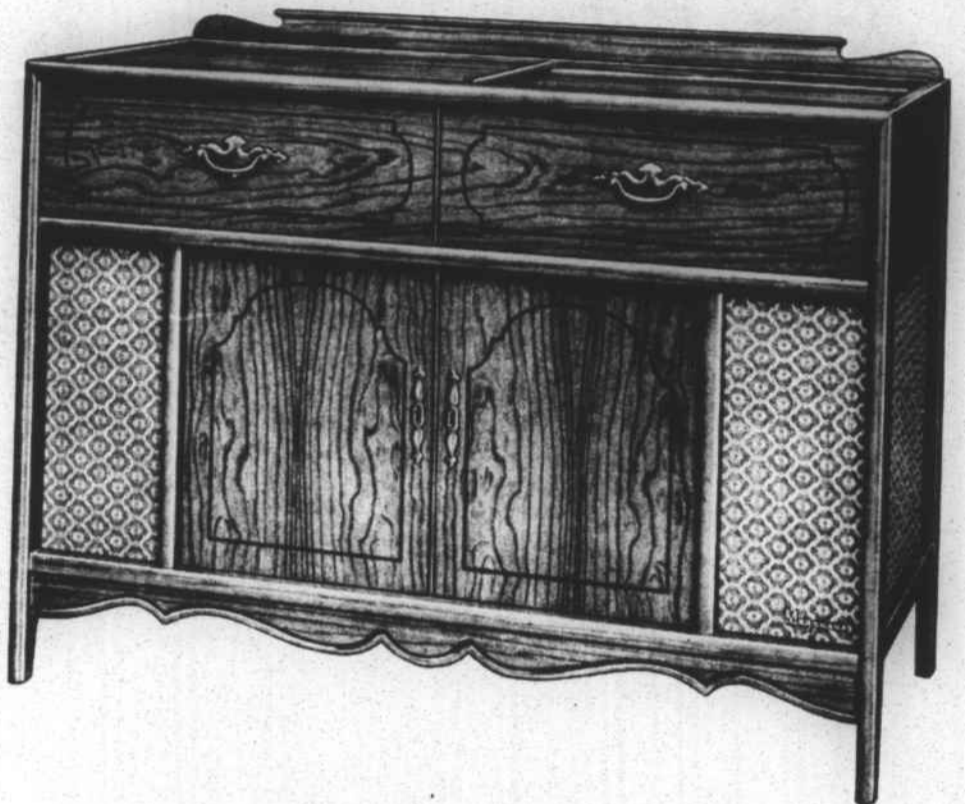
she is presently leader of a Girl Scout troop in Andrews. Eldest son in the Reed family is Lewis O., Jr., a senior at Andrews High School and an Eagle Scout. Daughter, Jody, is 16 and a junior at Andrews High, and Tammy Lee is 7, in second grade and the family pet. Another important member of this all-round family is Peppy, part Pekinese and part Rat Terrier, who loves camping as much as the rest of the Reeds.

Some of the principal positions Reed held prior to joining Andrews Furniture Industries include the Brunswick Corporation in Marion, Virginia and Kalamazoo, Michigan where he was Quality Control Manager and Division Superintendent. Lew helped to establish the Plastic Division for Aircraft in this plant. In addition to government contract work, this company produces dinette sets and institutional furniture. Lew was also plant manager of Phoenix Furniture Corporation in Sheboygan, Wisconsin, manufacturers of chairs, dining room furniture, institutional and architectural woodwork. He was also plant



Lew Reed

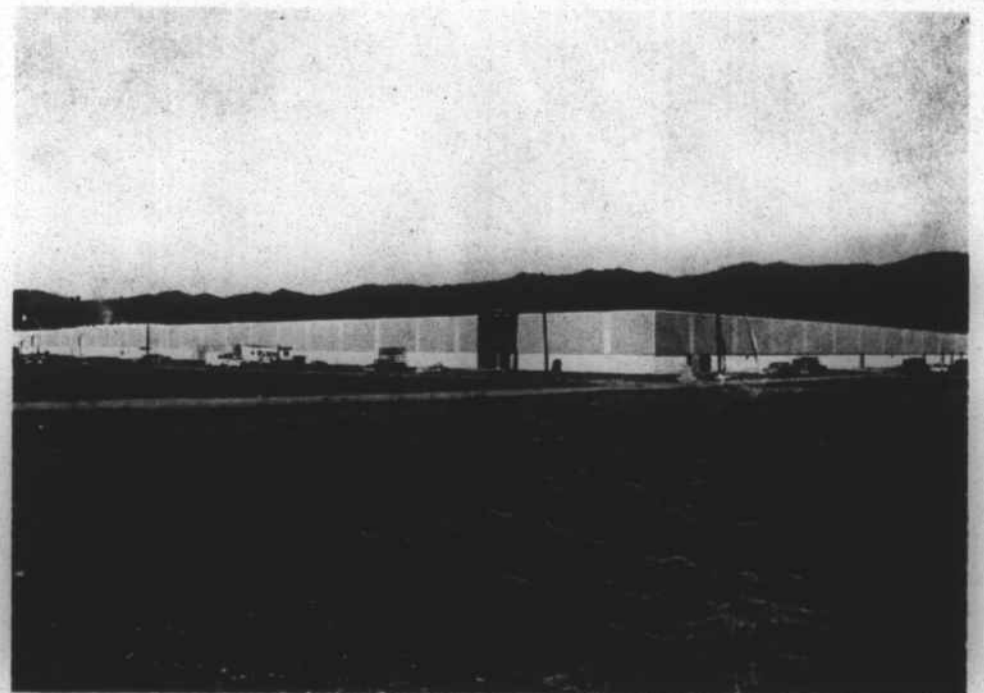
manager of Mutschler Brothers in Nappanee, Indiana, manufacturers of fine kitchen cabinets and institutional furniture and plant manager of Laminite Plastics in Morristown, Tennessee. He also spent four years in the Engineer Corps during World War II. In addition to camping, Lew's favorite pastimes are fishing and flying and he is looking forward to future days of relaxation in the mountains where these hobbies are readily available.



The Colonial and The Jefferson in maple

**We Are Proud To Have Been Selected  
To Do The Grading And Excavation  
In The Construction Of The Beautiful  
New Building Of**

## Andrews Furniture Industries, Inc.



## HAROLD WELLS

MURPHY, N.C.

ANDREWS RD.

837-2837