

THE CHEROKEE SCOUT

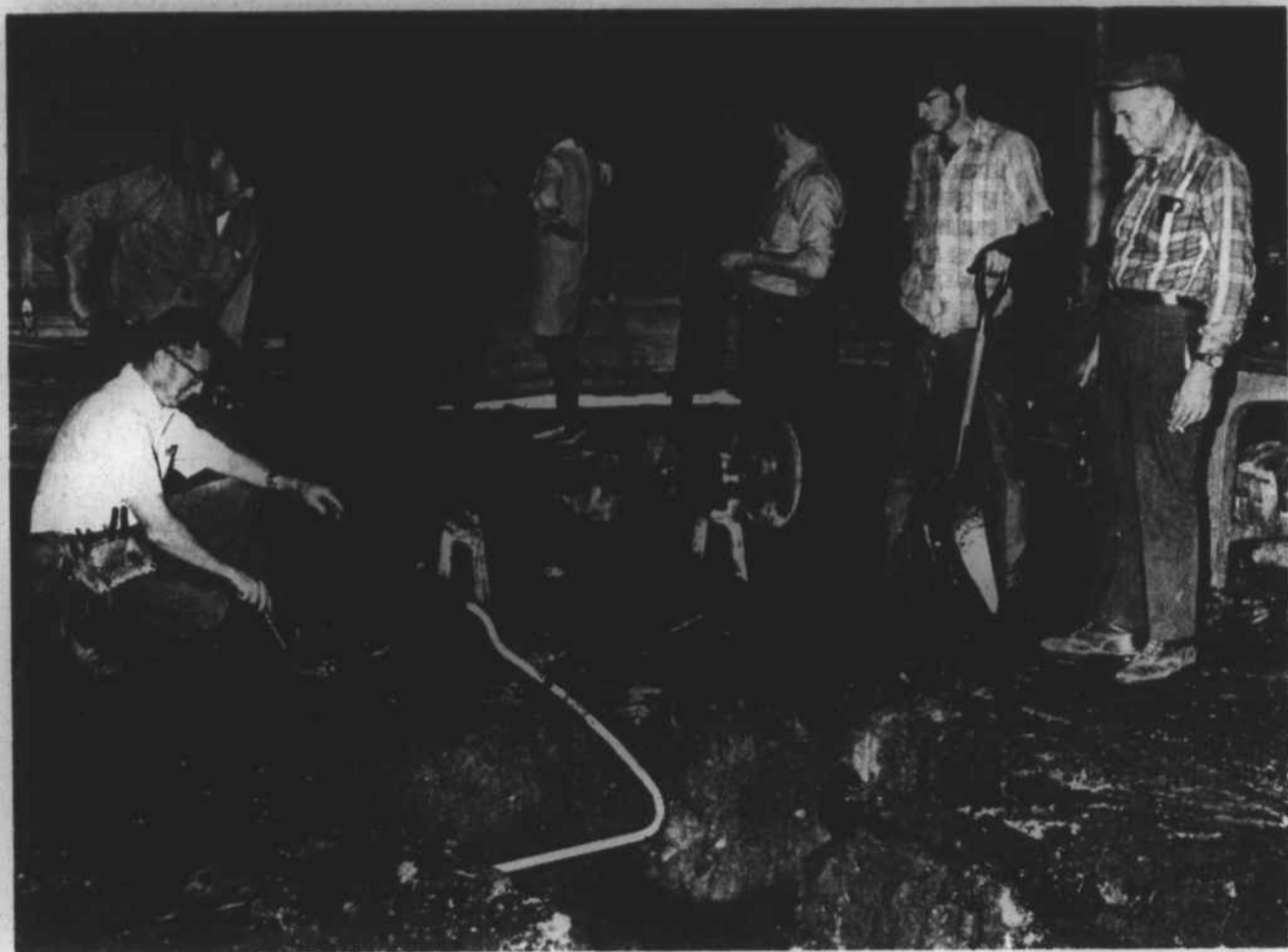
and Clay County Progress

12

PAGES

15' Per Copy

Volume 79 - Number 39 - Murphy, North Carolina, 28906 - Second Class Postage Paid At Murphy, North Carolina - Thursday, May 13, 1971



Melted Wiring

Electrician Don Hughes and Foreman Knead Kilby examine a melted switchbox at the edge of the conveyor belt pit where the fire is believed to have started Tuesday morning at Easley

Manufacturing. Other Easley employes had much of the fire debris cleaned up by late Tuesday but production has stopped for the remainder of the week, with several saws destroyed by the fire.

Easley Production Halted

Fire Damages Pallet Plant

Easley Manufacturing Company suffered extensive damage in an early-morning fire Tuesday.

Insurance adjusters were on the scene by Tuesday afternoon as electricians checking out the building all day discovered more and more damage. "The more we look, the worse it gets," one said.

R.W. (Bob) Easley said he estimated that damages would run somewhere between \$15,000 and \$25,000 to his plant. "But that's not counting our lost production time," he said grimly.

Easley said he hoped to crank up production lines next Monday, if it can be arranged. His firm has been in its present location on Concaheeta Street about six years, employing about 40 men in making wooden pallets, the raised skid on which many items are shipped to facilitate handling by forklift trucks.

The cause of the blaze has not yet been determined. Easley and others believe it started near two conveyor belts, which were destroyed along with several special saws which are

used to cut the lumber in specified lengths for making the pallets.

The Murphy volunteer firemen got the call about 5 o'clock Tuesday morning and arriving at the scene, found an intensely hot blaze, confined inside the metal building. They chopped a hole in the side of the building and had the fire under control in about 20 minutes.

"They did a fine job," Easley said Tuesday. "You can't praise them enough."

The nearly-airtight building contained the fire, Easley said, confining it to one section. "If it had gotten air, the whole building would have been burned."

He added that the intense heat in such a limited space was the reason for the heavy damage to the plant's electrical system. Electricians Tuesday found fuseboxes and all wiring in the vicinity of the fire had been melted and welded into one solid mass from the heat.



Television Teacher

Mrs. Patsy Hendrix, shown above teaching a literature class at Murphy High, became a television "star" for a short time last Thursday as a videotaping crew from Western Carolina University moved its equipment to the school. The small camera at left

records a teacher's classroom presentation on the video-taping machine at lower right. It is then replayed on the television set for evaluation. The process has also been used recently at the elementary school for student teachers.

Clay School Board Fires Five; Non-Partisan Label In Doubt

By Wally Avett
Staff Writer

The Clay County Board of Education is supposed to be a non-partisan group - but it fired five people last week, leaving some of the voters in doubt.

The Democrats are represented on the five-man board by William T. Groves and James Price.

"I've tried my best to serve impartially," Price said this week. "But when something like this happens, it's just a big joke to me."

Price said the three new Republican members of the board, Haig Davenport, Edgar Moore and Chairman Todd Phillips, voted for the dismissals. He said he and Groves either voted against firing the people "or else the other three voted to fire them first and then wasn't any use in us voting at all."

Price explained that "it was the view of these men that we should hire local people rather than outsiders, people who are not natives." Involved were two Methodist preacher's wives and a Shooting Creek teacher who lived in Georgia.

Mrs. Ethel LeNeave was the Shooting Creek teacher whose contract was not renewed for another year and Mrs. Jerry Chapman, wife of the Rev. Jerry Chapman, a member of the Methodist parish at Hayesville, was also dismissed.

The Clay board did not finish its deliberations on Tuesday night and met again on Thursday night at Superintendent of Schools Scott Beal's office. After the Tuesday night meeting, Mrs. John Burton, wife of the Hayesville Methodist minister, resigned her post.

Beal agreed with Price's statement that the non-partisan label of the board was a "joke" and confirmed Price's report that the principals of the teachers involved had recommended that they be rehired.

Three other employes were dismissed, without any reasons made public. They were Frank Ledford, truant officer; Boyd Scroggs, the school maintenance man; Mrs. Mary Holder, the lunchroom supervisor. Several teacher's aides also lost their jobs.

Chairman Phillips, contacted Monday night, said he would not comment at all on the action of the board. He jokingly said that he really wasn't sure what happened, that he may have been sleeping during part of the meetings and might have raised his finger periodically, which may have

been counted as a voting gesture.

Phillips said "the best I can tell, they've all been replaced with local Clay County people." When asked if politics were considered in hiring replacements, he said he didn't know. "We're kinda getting out of politics over at school," he said.

The chairman added that he didn't believe there would be any meetings to reconsider the action taken by the board.

Democrats in Clay County had Rep. Erwin Patton of Franklin introduce a bill in the Legislature back in March which would have scrapped the non-partisan basis for the school board.

However, Clay County teachers and the Hayesville PTA solidly opposed it and Patton allowed the bill to die in committee before it ever was voted on.

4657380920104958229077364

NUMBERS GAME

Scout readers next week will be able to play an exciting Numbers Game and, if they're lucky, buy bargains at fantastic low prices.

Participating merchants will pick numbers at random and post them on marked-down merchandise inside their stores. And each issue of the Scout next week will carry its own individual hand-stamped serial number.

The trick will be to match your paper's number with the numbers in the stores. When you find your number, you're a winner. You may be able to buy a suit, a dress, a pair of shoes, fishing rod, piano, appliance or any one of many other items, at a ridiculously low price.

It's a bargain-hunting at its best, it's fun and it's easy to play. Play the Numbers Game...in next week's Scout.

2515579



Chambers Began Before Revolution

By Gene Farmer
President
Chamber of Commerce

The Chamber of Commerce as a wholly voluntary institution in the United States is eight years older than the Declaration of Independence.

The New York State Chamber, first in America, was organized in 1768 and five years later the first local Chamber was formed in Charleston, South Carolina.

In these nearly 200 years Chambers of Commerce have steadily developed to a high point of efficiency and have proved vitally important in business and civic development throughout the nation.

Basically it is the business community at work as the central agency for community development for business, industry, the professions, and all civic interests, doing jobs that no individual can do alone, rendering many services that benefit all citizens.

The Chamber of Commerce works through committees which analyze problems, develop solutions and take actions to achieve the objectives which solve the problems. For example:

1. Committee work designed to stimulate new business; conventions, promotions, industrial development, retail trade promotion, agriculture, etc.
 2. Committee work directed toward community improvement, civic development, beautification, health and safety, traffic and transportation, etc.
 3. Committee work designed to promote good citizenship, legislative activities, get-out-the-vote campaigns, education, etc.
 4. Committee work on organization improvement, membership promotion, program of work, committee on committees.
- We believe there is no more profitable investment for any businessman, industrialist or professional man than his annual financial investment in the local Chamber of Commerce.



PTA Projects

Murphy Elementary Principal Bill Hughes and Mrs. Ann Shook and Mrs. Bennie Jo Graham of the PTA pose with some of the playground equipment purchased for the school recently by the PTA as the culmination of a three-year project.

The equipment was purchased with \$947 raised by the PTA and assembled and installed with volunteer labor from Tri-Tech, Murphy High's agriculture classes and the Mainstream project. Carringer Photo)



DE Banquet

Steve McDonald, standing rear, president of the Distributive Education Club at Murphy High, presided over the club's annual banquet, held last Thursday night at

O'Dell's Restaurant. DE students and their employers attended, with certificates of appreciation being presented to participating employers. (Staff Photo)

Softball

THURSDAY MAY 13
6:30-Martins Creek-Westco
7:45 Levi-Strauss-Martins Creek Girls
9:00 First Baptist Church-Wachovia Bank

FRIDAY MAY 14
6:30-Bellview-Sunshine
7:45 American Thread-Levi Straus (girls)
9:00 First Baptist Church-Ga. Boot

MONDAY MAY 17
6:30 Martins Creek-Sunshine Potato Chips
7:45 American Thread-Levi Straus (girls)
9:00 First Baptist Church-Ga. Boot

TUESDAY MAY 18
6:30 Westco-Wachovia Bank
7:45 Martins Creek Providence Hospital (Girls)
9:00 WCVB-Sunshine Potato Chips

4-Square

Meeting Set

The monthly meeting of the board of directors of Four-Square Community Action, Inc. will be held Monday night at the Andrews Community Center. The Meeting begins at 7:30, all board members are urged to attend and the session will be open to the public.

This is Chamber of Commerce Month . . . Support Chamber Projects