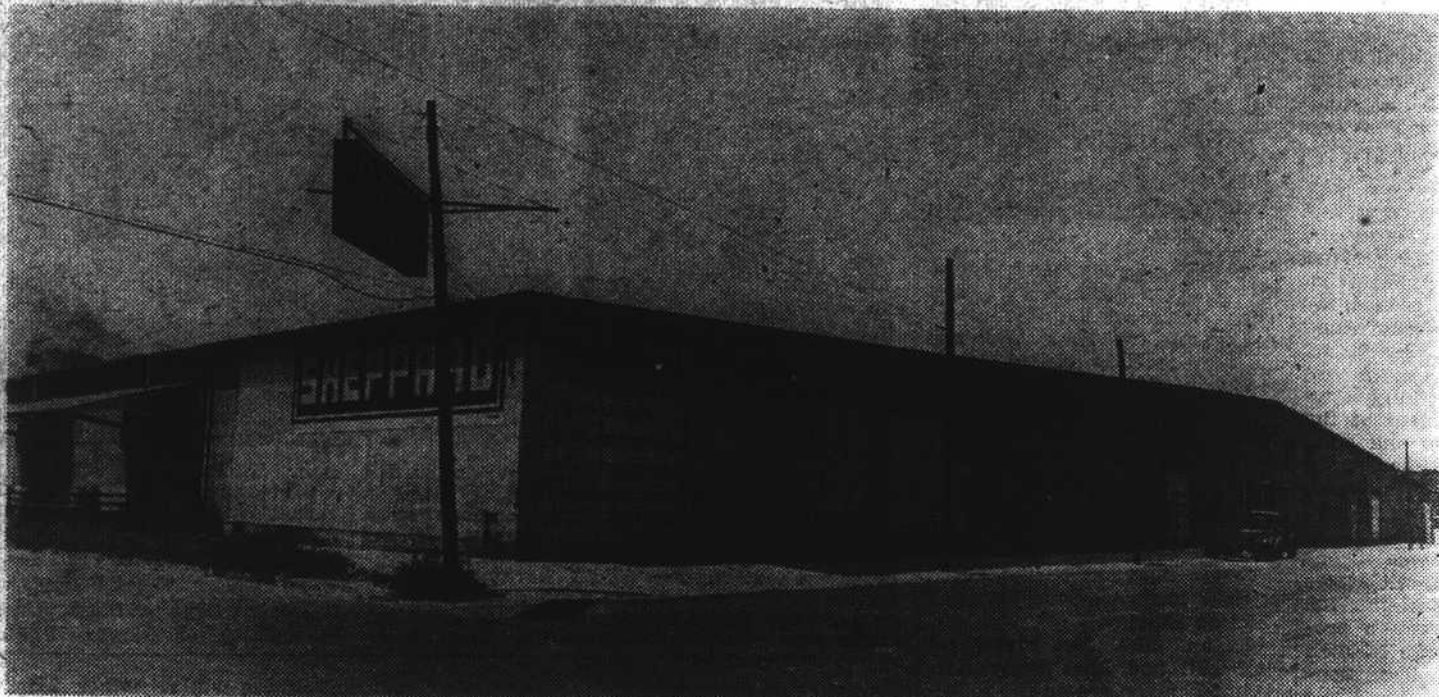


SHEPPARD'S NO. 1

KINSTON'S TOP-DOLLAR HOUSE BY OVER \$2 IN 1948



101,000 SQUARE FEET OF SOLID SHEPPARD SERVICE, AT CORNER OF BRIGHT AND HERITAGE IN KINSTON.

AND NOW

SHEPPARD'S NO. 2

KINSTON'S NEWEST AND FINEST

With The Same Quality Sales Service That Was Kinston Tops By Over \$2 Last Year



165,888 MORE SQUARE FEET OF SHEPPARD QUALITY SERVICE FOR OUR PATRONS

At the Intersection of the Rich lands - New Bern - Trenton Highways.

The Sales Force of these two warehouses is recognized by Tobacco Growers of this entire section as Experts in Getting the Highest Possible Price for every pound of tobacco sold on their floors.

MORE THAN DOUBLE LAST YEAR'S SELLING TIME

R. E. Sheppard, Manager

W. BRUCE KENNEDY, Assistant Manager
LOUIS RAPIER, Office Manager

J. J. SHEPPARD, Assistant Manager
LIONEL GARNER, Auctioneer