

### Cost Per Pupil Compared for State and Eight School Units

Unit	Students	Total	State	Federal	Local
State	1,106,894	\$429.29	\$292.18	\$65.66	\$68.45
Cherokee	1,224	533.52	365.85	123.05	44.62
Cumberland	25,056	373.81	259.41	92.06	22.34
Iredell	8,633	334.67	287.17	15.92	31.58
Lenoir	7,981	488.46	303.90	114.66	69.88
Kinston	6,000	452.76	286.24	63.78	102.74
Mecklenburg	71,946	478.89	284.09	28.33	166.47
Morven	855	509.69	302.62	172.14	34.93
Yancey	3,026	441.35	309.01	112.15	20.19

Cherokee spent most per student, got most from state funds.  
 Iredell spent least per student, got least from federal funds.  
 Cumberland spent below state average, got least from state.  
 Mecklenburg spent the most from local funds.  
 Morven got the most from federal funds.  
 Yancey spent least from local funds.

This is just one more graphic example of the gross inequity heaped on North Carolina taxpayers in the name of equal education.

As this table shows the state supplied an average of \$292.18 per pupil for the 1,106,894 pupils in average attendance in all the state's public schools in 1966-67.

But Cherokee County's 1,224 students were favored with 25.2 per cent more state funds than this state average and Cumberland County's 26,056 students were penalized with the lowest allocation of state funds, receiving 12.3 per cent less than the state average allocation. This resulted in the allocation of 41.0 per cent more per pupil from state funds to Cherokee than to Cumberland.

This tabulation also shows that the average appropriation per pupil from local funds amounted to \$68.45 in that school year. Here the spread is even worse than in state funds.

Mecklenburg County supplied \$166.47 from county funds and Yancey County had to dig up only \$20.19 per pupil that year; a difference of 824.5 per cent. Yet after digging up all that local money Mecklenburg only wound up spending \$37.49 more per pupil than Yancey County since the state gave Yancey County \$24.92 more per student than it gave Mecklenburg and the federal bureaucrats dished out \$83.82 more per pupil in Yancey County than in Mecklenburg County.

The spread in allocation of federal funds is from the \$172.14 given for each of the 855 children in the Morven School System down to the \$15.92 per pupil allocated to the 8,633 children in the Iredell County System. This is a spread of 981.2 per cent in the equity exhibited by the educational gods of HEW.

The state average federal allocation was \$65.66.

The average uneducated taxpayer may wonder how the state school board persuades 159 school districts over the state to stand still for this kind of official thievery.

A complicated formula which includes the per capita income of each school district, the tax rate and perhaps the number of warts on the school superintendent's nose is multiplied together, divided by the retirement pay of the average football coach and that's how the money is dished out per student. This may be an exaggeration of the formula but not by much.

In cold fact what happens is that the state school board takes away funds from those school districts foolish enough to tax themselves additionally and gives those funds to those school districts that refuse to levy local taxes.

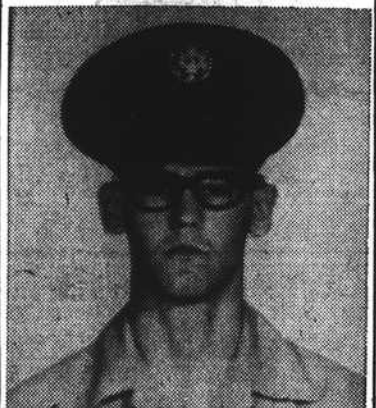
A local instance is quickly evident when the Lenoir County and Kinston systems are compared. The Kinston Graded School District has a special 21-cent school tax, which in 1966-67

raised \$115,272, which the average payer of that tax presumes goes to give the students in the Kinston system at least a monetary edge over their country cousins in the Lenoir County system. But it doesn't work out that way.

Because the state gives the Lenoir County system \$16.73 more per student than it allocates to the Kinston system and the federal allocation includes \$50.90 more per student for the Lenoir County system than for the Kinston system.

Which results in the \$19.29 per pupil extra the taxpayers of the Kinston district levy against themselves being wiped out and winding up with the \$488.46 being spent for each pupil in the county system and only \$452.76 being spent on each student in the Kinston system. This kind of thievery exists all across the state.

### Batten to Texas



Airman David L. Batten, son of Mr. and Mrs. Milford C. Batten, Route 2, Pine Villa, Grifton, has completed basic training at Lackland AFB, Tex. He has been assigned to Sheppard AFB, Tex., for training in the



**CAPT. FRED'S LOG**  
 by Capt. Fred Lawton, Director Marine Safety, Raytheon Company & America's Cup championship sailing master.

**STOP ENGINE WHEN WATER SKIERS ARE BOARDING OR ENTERING WATER.**



**SAFETY MAKES A HAPPY TRIP**

### Two Jones' Arrests

Jones County Sheriff Brown Yates reports the arrests of two men during the past week. Ed Green of route 1, Trenton, was charged with having no operators license and Grover Bryan Carter of route 1, Pantego, N. C. was charged with reckless driving and driving under the influence.

### DEATHS

#### Mrs. Edith Smith

Funeral services were held Saturday for Mrs. Edith Smith, 86, widow of Fountain Smith of Deep Run route 1, who died last Wednesday.

#### Mrs. Annie Noble Warren

Funeral services were held Monday for Mrs. Annie Noble Warren, 68, widow of E. L. Warren, of 319 E. Blount St., who died Saturday in a New Hanover County nursing home.

#### Roland B. West

Funeral services were held Wednesday for Roland B. West, 45, salesman for Frosty Morn Packing Company of 302 Wilson Avenue, who died Monday after a long illness.

civil engineering field. Airman Batten, a graduate of North Lenoir High School, attended East Carolina University.

### LAND TRANSFERS

The following land transfers were reported last week by register of deeds Bill Parker in Jones County.

From Walter L. Adams and Hazel B. Adams to Lewis David Philyaw .28 of an acre in Tuckahoe township.

From Mable and Ray Holt to Gregory and Lois Simpson 1.06 acres in White Oak township.

From Joseph McKinley and Susie Perry Murrell to Ella Perry Green 8.28 acres in Trenton township.

From Joe R. and Lottie L. Killingsworth to Albert L. and Carol D. Killingsworth .6 of an acre in Cypress Creek township.

From E. E. Bell, Hiram Creagh, and Albertina B. Bell to Gerald P. and Audrey T. Riggs a tract of land in Pollocksville township.

From C. W. Franks to Ray and Doris Fonville a tract of land in Pollocksville township.

From Retha Dudley to William Ander Dudley a tract of land in White Oak township.

### Divorces Filed

The following divorce suits were filed during the past week in Jones County.

Charles Douglas Thigpen of Trenton from Annie Carter Thigpen of Pink Hill.

John Hargett Thompson of Trenton from Patricia Allison Thompson of Trenton.

Brenda Kaye Padrick Alphin from William Thomas Alphin.

**D  
A  
I  
S  
C  
O  
M  
I  
N  
G**



**DON'T SACRIFICE LIVES WITH WORN-SLICK TIRES**

ALL SIZES! COMPLETE SELECTION!



### C. A. BATTLE & SONS

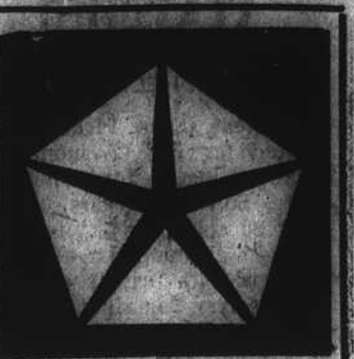
P. O. BOX 246 — COMFORT, N. C.  
 "A Complete Tire Recapping Center"  
 Phone Richlands Ext. 324-4234  
 Kinston Swansboro  
 1406 Richlands Road Hwy. 24  
 Phone 523-5015 Phone 326-8929

**ONE HIGH STANDARD**

The same thoughtful consideration and complete dignified service is accorded all regardless of the cost of the funeral selected.

### Garner's Funeral Home

Dial JA 3-2124 or JA 3-2125  
 Kinston, N. C.



### Your Next Car . . . The Great New CHRYSLER NEW YORKER

The Elegant Chrysler with the short option list. Many so called options are standard on New Yorker, New Yorker is truly the ultimate in luxury, performance and beauty.

### TOWN AND COUNTRY WAGON

The world's best equipped wagon. Real beauty with all the extras, and it still burns regular gas. How do you beat that? The all around wagon for beauty, luxury, economy and service. Chrysler Town and Country Wagon has the biggest advantage!

### CHRYSLER 300

The success car for strength and beauty. The 440 V-8 and 3-speed automatic transmission lets you feel the power and performance of the 300. Bucket seats, console are all available in the famous 300.

### NEWPORT CUSTOM

The car with the extra touches of elegance, but at a price you can easily reach. The car with the quiet, do not disturb atmosphere; with luxuries and beauty you can't imagine, and it still burns regular gas. Beauty, performance, economy are all built-in Newport Custom.

### NEWPORT

The only resemblance to smaller cars is its price tag. The massive Newport with all its beauty still has its famous regular gas engine. With many more standard features and extra length, the '69 Newport proves to be the bargain of a lifetime. The interior and exterior show beauty and luxury, the price tag and engine show economy. See, drive, feel the 1969 Chrysler. It is a thrill you must experience before buying your next car. Weeks Motor Company, your Chrysler headquarters for your next car, make it a Chrysler!!!

### WEEKS MOTOR CO.

401 N. McLowen St.  
 Kinston, N. C.  
 DEALER LIC. NO. 2888