

## ANIMALS NEED WARM WATER

Should Never Drink Water at Freezing Temperature as it Lowers Vitality.

One of the most expensive ways a farmer can heat water for his livestock is to let the animals drink it cold and warm it with their bodies.

Giving the animals water at freezing temperature lowers their vitality, and seriously curtails the production of dairy cattle, said Prof. R. H. Ruffner, head of the State College animal husbandry department.

"Can you imagine a beef animal fattening, a calf growing, or a cow producing large quantities of milk after becoming thoroughly chilled and shivering for an hour in overcoming the effects of 10 to 20 gallons of ice cold water?" he asked.

He estimated that a cow producing 25 pounds of milk a day burns up more than a pound of corn in warming the water she drinks when it is taken into the body at freezing temperature.

At the State College dairy barn, where water is supplied at a moderate temperature, there are seven cows producing more than 50 pounds of milk a day.

The food burned to warm the water is needed to maintain the animal's vitality, promote growth, and to produce milk, Prof. Ruffner pointed out.

To attain her full milk-producing capacity, he added, a cow should be given all the fresh water she will drink at a temperature of 70 degrees.

If the water is too cold, she will not drink enough to maintain a full milk flow.

The resulting loss may be far more than the slight cost of providing animals with water from which the chill has been taken.

## POULTRY RAISING HARD AT FIRST

Requires Long Hours of Work and Study and Careful Attention to Detail.

The novice who enters the poultry business with expectations of making easy money is doomed to almost certain failure.

Poultry raising requires long hours of work and study, careful attention to detail, and a persistence that refuses to admit defeat, said Roy S. Dearstyne, head of the State College poultry department.

Too often, he said, urban dwellers invest large sums in placing buildings and equipment on a poultry farm, then purchase low-priced chicks and attempt to run the farm with the cheapest labor obtainable.

Only by a miracle, he declared, can such a venture succeed.

Before any one, city man or farmer, goes into the poultry business, Dearstyne added, he should consult the local farm agent, then visit a number of successful poultry farms to see how they are run.

The beginner should start off with a comparatively small number of birds. A year's experience is needed to get a working knowledge of poultry production.

Secure the best chicks obtainable, Dearstyne emphasized. Good chicks cost only a few cents more to start with, while inferior chicks cost many dollars in lost profits later on.

Before setting up a poultry farm, ascertain whether there is a good market for eggs and chickens. There is no point to poultry raising unless the products can be sold readily.

Study measures for controlling parasites and the common poultry diseases, Dearstyne continued; feed carefully but amply, exercise sanitation at all times, and cull rigidly.

Subscribe to two or more poultry magazines, and secure the poultry bulletins which may be obtained free from the agricultural editor at State College, Raleigh.

From the Kobe Ispedezza planted on 14 acres of wheat last spring, G. E. Bell of Yadkin County harvested 28 two-horse wagon loads of hay with each load producing 24 bales that Mr. Bell sold for \$1 a bale. The wheat was extra.



Clyde "Jack" Oakley will meet Tommy Barton Friday night.

## THEY COULDN'T GET MARRIED

An interesting illustrated article which discusses the looney love life of an aristocrat and a beauty who have been trying to get married in almost every country for seven years. Read this article in the January 19 issue of the American Weekly, the big magazine which comes regularly with the Baltimore Sunday American. Your newsdealer has your copy.

State Warrants For Sale at Times' Office.

Henry Gibbs of Dona, Henderson County, reports killing a hog weighing 1,515 pounds net and therefore claims producing the largest hog in this state.

Moonshine corn liquor used in radiators of the terracing tractors in Orange County served as an adequate anti-freeze mixture during the recent severe weather.

In Anson County, 1800 cotton growers received \$60,000 in parity checks in time for the Christmas holidays. Tenants and children shared in the happiness created.

CALL  
**BUCK JONES**  
FOR  
Transfer Service  
OR  
Public Hauling

## NO UPSETS

The proper treatment for a bilious child



ANY mother knows the reason when her child stops playing, eats little, is hard to manage, Constipation. But what a pity so few know the sensible way to set things right!

The ordinary laxatives, of even ordinary strength, destroy all hopes of restoring regularity.

A liquid laxative is the answer, mothers. The answer to all your worries over constipation. A liquid can be measured. The dose can be exactly suited to any age or need. Just reduce the dose each time, until the bowels are moving of their own accord and need no help.

This treatment will succeed with any child and with any adult. Doctors use a liquid laxative. Hospitals use the liquid form. If it is best for their use, it is best for home use. The liquid laxative they generally use is Dr. Caldwell's Syrup Pepsin. Any druggist has it.

# NOTICE!

By Order of the County Board of Commissioners all property on which 1934 taxes have not been paid will be advertised for sale on February 1st. Please attend to this matter at once and save additional costs.

Please come in and pay your 1934 poll and personal property taxes before February 1st and save additional costs.

**M. T. Clayton**  
Sheriff.

## BLACK LOCUST IS GOOD FOR LAND

Not Only Protects Soil, But Provides High Quality Timber.

Steep, eroded lands may be brought back into production with black locust as a timber crop.

Black locust not only protects the soil but it also provides high quality timber for posts, poles, and fire wood, says R. H. Page, Jr., assistant extension forester at State College.

Page said that an excellent example of reclaiming a badly eroded mountain side in Avery County is located on the farm of J. L. Hartley.

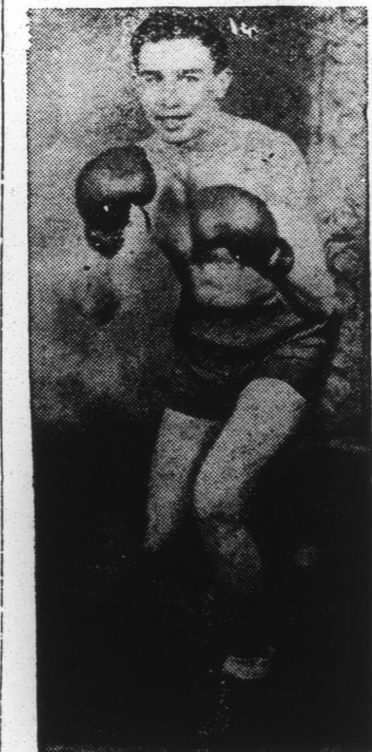
Ten years ago Hartley scattered black locust seed pods on a field that was too steep to produce wheat, corn, or tobacco, and was rapidly eroding while lying idle.

He continued broadcasting seeds each year until at present there are 15 acres of land growing locusts from three to ten years of age. The trees range from six to 25 feet in height.

This winter Hartley is thinning out the timber by removing all deformed and suppressed trees from the older fields. This will provide more room for the trees which will later be used for posts and poles. The wood removed is being used for fuel.

Hartley is also seeding burned-over woodlands near his home with different varieties of tree seed, including poplar, ash, and northern red oak.

Planting trees on these burned-over areas holds the soil in place



Tommy Barton will meet Clyde "Jack" Oakley Friday night.

## WE BUILD FOR

Roxboro and Person County With all Work Guaranteed.

No Job Too Large and None Too Small.

**GEORGE W. KANE**

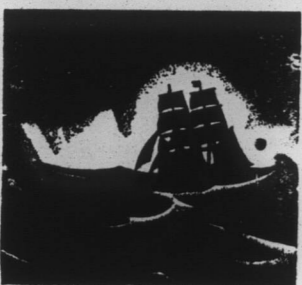
Roxboro, N. C.

**666** Checks C O L D S and F E V E R first day HEADACHES in 30 minutes  
Liquid-Tablets Salve-Nose Drops

## PAINTING SERVICE!

Whether it's a room, a house, or just a piece of furniture that you want painted, you may feel confident that the job will be well done if you let us do it. We use only the finest materials and employ only the most skilled of workers. Call us for an estimate.

**G. B. MASTEN**  
Painting & Papering

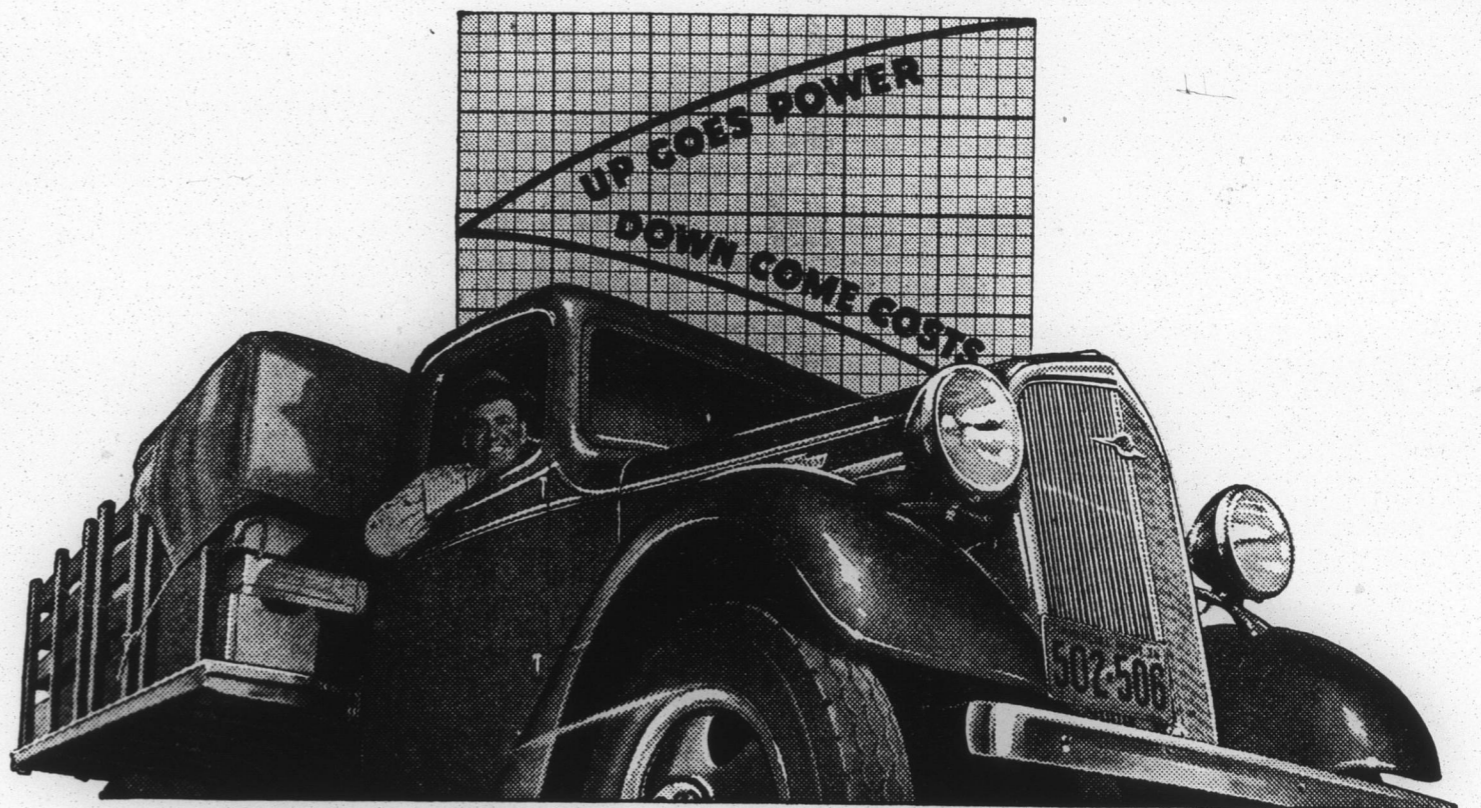


A NEW HORIZON . . . . . WITH NEW BEAUTY

BLACK storm. Raging waters. And then . . . the after-peace . . . the calm . . . the quiet . . . the shining light of a new horizon which Life's Cargo enters on its eternal voyage through celestial joy and everlasting freedom from earthly strife.

**WOODY'S**

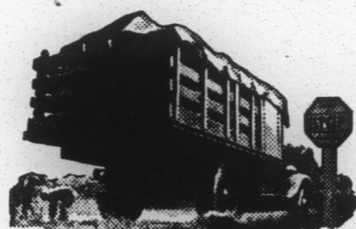
FUNERAL HOME "Friendly Service" PHONE NO. 2 Ambulance Service Anywhere Anytime



# Announcing NEW CHEVROLET TRUCKS FOR 1936

New Power . . . New Economy . . . New Dependability

**CHEVROLET** You are looking at the most powerful truck in all Chevrolet history . . . and the most economical truck for all-round duty . . . Chevrolet for 1936!



**NEW PERFECTED HYDRAULIC BRAKES**

always equalized for quick, unswerving, "straight line" stops



**NEW FULL-TRIMMED DE LUXE CABS**

with clear-vision instrument panel

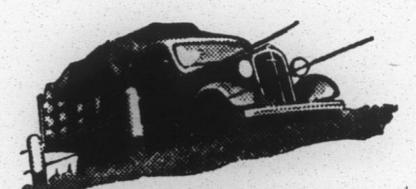
The brakes on these big, husky Chevrolet trucks are **New Perfected Hydraulic Brakes**—the safest ever developed. The engine is Chevrolet's **High-Compression Valve-in-Head Engine**—giving an unmatched combination of power and economy. The rear axle is a **Full-Floating Rear Axle** of maximum ruggedness and reliability. And the cab is a **New Full-Trimmed De Luxe Cab** with clear-vision instrument panel—combining every advantage of comfort and convenience for the driver.

Buy one of these new Chevrolet trucks, and up will go power and down will come costs on your delivery or haulage jobs.

**CHEVROLET MOTOR COMPANY, DETROIT, MICH.**

**6%** NEW GREATLY REDUCED S.M.A.C. TIME PAYMENT PLAN The lowest financing cost in G. M. A. C. Motors. Compare Chevrolet's low delivered prices.

A GENERAL MOTORS VALUE



**NEW HIGH-COMPRESSION VALVE-IN-HEAD ENGINE**

with increased horsepower, increased torque, greater economy in gas and oil



**FULL-FLOATING REAR AXLE**

with barrel type wheel bearings exclusive to Chevrolet

**C. H. Joyner Chevrolet Co., Inc.**  
Main Street Roxboro, N. C.