

CALL 250

We want all the news of your community. Please call us or send it in.

Person County Times

Section 2

IF YOU WOULD KNOW WHAT IS GOING ON AROUND YOU READ THE PERSON COUNTY TIMES—IT IS A PAPER FOR ALL THE PEOPLE OF PERSON AND ADJOINING COUNTIES.

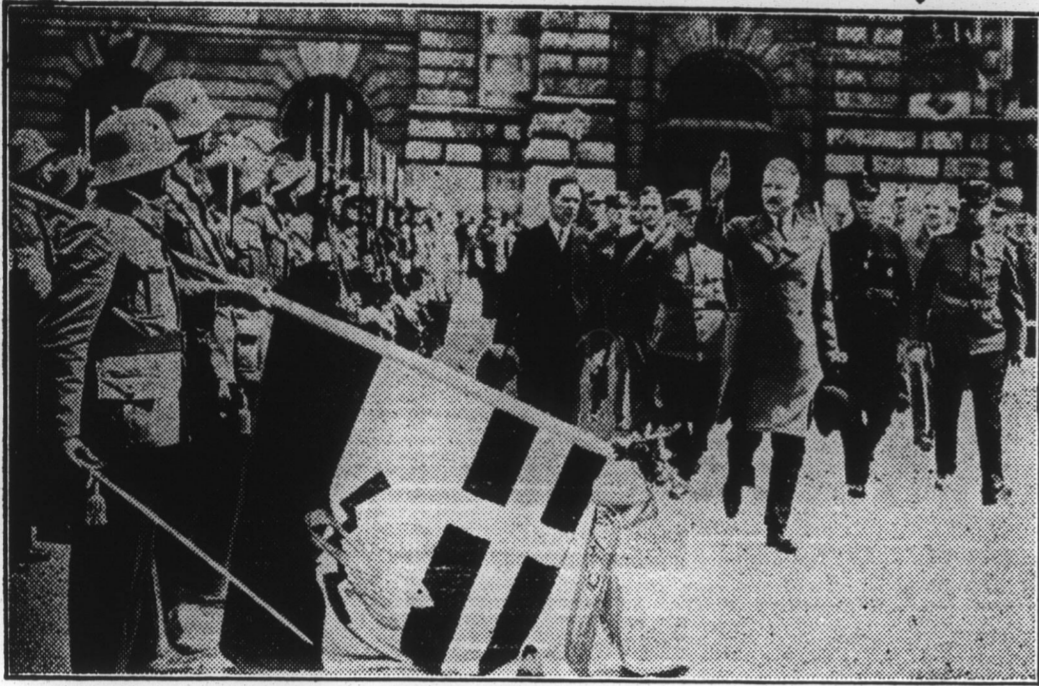
VOLUME VII.

PUBLISHED EVERY THURSDAY, ROXBORO, NORTH CAROLINA,

THURSDAY, MAY 28TH, 1936

USE PERSON COUNTY PRODUCTS

NUMBER FORTY-FIVE



AUSTRIAN LEADER REVIEWS CATHOLIC WORKERS' ORGANIZATION

Chancellor Kurt Schuschnigg salutes a guard of honor of the Freiheitsbund, or Liberty League, in Vienna, at the very moment when disorders prevailed in another section of the city. A clash between the Liberty League and the Heimwehr, supporting Vice-Chancellor Von Starhemberg, precipitated the latter's removal from office and subsequent flight into exile.

Entire Section Badly In Need Of Rain If Crops Are To Grow

Weather report Roxboro station: Since April 10th, the last rain of any size, 0.86 in., we have had seven small rains, the largest being 0.42 in. and 2 traces. The 0.42 in. rain was on May 5th.

During the 42 days interval between April 10th to May 21st, inclusive, the rainfall totals 2.51 in. or 0.06 in a day. Thirty days have been clear, 10 part cloudy and 2 cloudy.

A comparison of April and May for the past ten years:
 April, 1926, 2.23. May, 1926, 0.96.
 April, 1927, 2.45. May, 1927, 1.20.
 April, 1928, 7.30. May, 1928, 3.65.
 April, 1929, 2.80. May, 1929, 3.83.
 April, 1930, 1.97. May, 1930, 6.10.
 April, 1931, 4.84. May, 1931, 6.11.
 April, 1932, 2.32. May, 1932, 1.50.
 April, 1933, 4.41. May, 1933, 8.52.
 April, 1934, 4.16. May, 1934, 6.13.

April, 1935, 5.42. May, 1935, 2.85.
 April, 1936, 5.07. May, 1936, 0.83, up to 21st.
 Total—April, 42.97, May, 40.68.
 Average, April, 3.90, May, 3.70.
 High, April, 7.30, May 8.52.
 Low, April, 1.97, May, 0.83.
 C. M. Abbutt, Cooperative Observer.

STRANGE HONEYMOON

An absorbing article revealing the hair-raising tales and startling sights of a newly-wed couple who visited Devil's Island. One of many features in the May 31 issue of the American Weekly, the magazine which comes regularly with the Baltimore Sunday American. Get your copy from your local newsdealer.

For Immediate Results Advertise in the Times

LAST CALL FOR WORK SHEETS

Must Be Filled Out And In County Agent's Office By May 31st.

By H. K. Sanders

The Washington office has requested that all work sheets be filled out and in the County Agent's office by May 31st. A number of farmers have requested that they take their work sheets home with them in order that they might better estimate their acres. These farmers will please make every effort possible to return these work sheets or send them in by mail this week.

All others who have not filled out their work sheets will please try to attend to this as soon as possible. No farm can qualify unless the work sheet has been filled out. Office closed Saturday afternoons.

The basement office, in which the

soil conservation work is being carried on, will be closed every Saturday afternoon. The office hours are from 8 a. m. to 12 M. and from 1 p. m. to 5 p. m. every day except Saturday. On Saturdays the office force will be on duty from 8 a. m. to 12 m.

Terracing

The terracing outfit is now at work in the vicinity of McGee's Mill and Ceppo. If anyone in that neighborhood wants any work done on solid fields that are not now in cultivation, please call at the County Agent's office, or write a card, or communicate with Mr. J. B. Snipes. This is a good opportunity to have work done on solid fields lying out that should be terraced now.

The crop of early Irish potatoes in eastern Carolina will be cut 25 per cent below last year due to unfavorable weather this spring.

Five pairs of pure bred Berkshire pigs were purchased as foundation stock from Pinehurst Farms by club boys of Guilford County.

Boys who are members of the 4-H club at the Mills Home in Davidson County have 12 pure bred Holstein calves as club projects.

Gains of two pounds a day are recorded with hogs in feeding demonstrations throughout eastern Carolina and farmers are finding it profitable to feed out the animals at prices which prevailed this spring.

MRS. BROOKS BURIED SUNDAY AFTERNOON

Interment at Shilo Church Sunday Afternoon.

Mrs. Anna Brooks was buried by the side of her late husband, Jesse W. Brooks, at Shilo church in Person county Sunday afternoon, May 24th.

Mrs. Brooks before marriage was Miss Anna Covington, Caswell county. She was twice married.

Her first husband was Mr. William A. Roberts also of Caswell county.

Mr. Jesse Brooks was a native of Person county, but after his marriage to Mrs. Brooks they lived in Durham, N. C. She was in her 81st year and for the past five years had made her home with her daughter, Mrs. Ethel Roberts Cooke, at Ashland, Va.

Surviving her are her daughter, Mrs. Cooke, one brother, Mr. John Covington and one grandson, Mr. Jesse C. Smart, all of Virginia.

Over 1,000 Johnston County farmers have received cotton adjustment checks for sales made last fall, and nearly 3,000 have signed work sheets for the new program.

New Hanover farmers plan to increase the acreage to Iseberg lettuce next season since the old varieties do not sell to advantage.

State Warrants For Sale at Times' Office.

VOTE FOR



R. T. "DICK" FOUNTAIN

FOR U. S. SENATE

He Will Aid and Work With President Roosevelt

THE FINEST MOST COMPLETE

COLDSPOT ELECTRIC REFRIGERATOR

EVER OFFERED FOR \$129.50

\$5 Down \$5 MONTH Plus Small Carrying Charge

For \$129.50 you get the big 6 cu. ft. size instead of the usual 4 or 5 foot size usually offered at this price; you get ten of the finest features money can buy; and you get Coldspot economy and efficiency. Get the "inside" facts.

NEW STREAMLINED BEAUTY — eye-arresting and modern inside and outside.

TOUCH-A-BAR — opens the doors gently when your hands are full.

FAMOUS FOODEX — an orderly, "indexed" place for every food.

ROTORITE UNIT — approved by Good Housekeeping Institute.

INTERIOR LIGHT — gives automatic, full vision when door is opened.

9-POINT COLD CONTROL — freezing speeds to suit every season.

GLEAMING DULUX EXTERIOR — and easy-to-clean porcelain interior.

DRY ZERO INSULATION — finest money can buy, adds to efficiency.

96 ICE CUBES — 7½ pounds of ice fast. Three separate ice trays.

BIG SIZE — 6.3 cubic foot capacity and 12.19 sq. ft. shelf space.

(Other Models \$97.50 to \$194.50)

Up To 3 Years To Pay

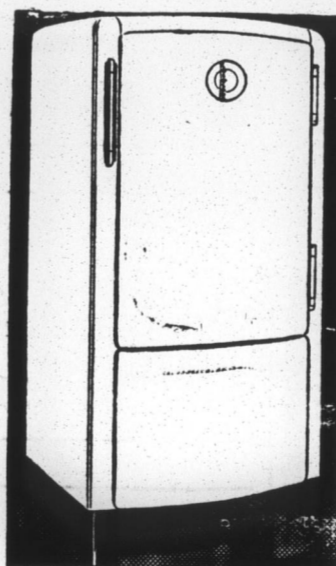
For Homes Without Electricity! BIG 6-CU. FT. AUTOMATIC

Kerosene Coldspot

We really mean Automatic. Has Automatic Burner Lighting and Automatic Temperature Control. No daily handling of oil, no daily lighting of burners, no tank to fill with water. Once lighted, the Coldspot operates continuously without the slightest attention. Forge it for days at a time. You merely refill the kerosene tank every 7 to 12 days. Even the most up-to-date Electric isn't much simpler than that.

\$10 DOWN

\$219.50 Cash



SEARS, ROEBUCK AND CO.

301 W. Main St. Durham, N. C.

LEADERS

The American railroads are leaders in the field of scientific research. Today, in their individual laboratories, and collectively, through the Association of American Railroads, they are spending millions of dollars in a vast program of research, experimentation, testing and development on hundreds of projects to improve facilities, safety and service. Within a recent ten-year period they expended \$6,750,000 through the association alone. Since 1923, they have spent more than seven billion, 400 million dollars for improvements and betterments that promote economy and efficiency of operation.

The Norfolk and Western Railway is in the front rank in the field of transportation research and improvement. It maintains extensive physical and chemical laboratories, equipped with the most modern facilities for scientific exploration, supported by wide and varied field observation. In these laboratories, N. & W. technicians last year made approximately 25,000 tests and analyses of nearly everything used by the railroad—the steel that goes into the locomotives, cars, rail, and bridges; concrete, ballast, paint, lubricating oils, signals, brakes, draft gears, coal; water for passenger trains, construction camps and shops, and dozens of other products.

The Norfolk and Western was the first railroad to pioneer in heavy electric traction. Its engineers were among the first to invent and put into practice a satisfactory method of tunnel ventilation. It pioneered in the use of wrought steel wheels for freight cars. The railroad has been a leader in improving locomotive performance and devices, in the development of track scales, in improved and safer shop practices. And it was one of the first railroads to discard completely wooden passenger coaches.

Alert and awake to their opportunities, the American railroads have built the largest and most efficient transportation system in the world. And by constant research, improvements, and enterprise, they will maintain that place of leadership, and will continue to forge ahead.

NORFOLK AND WESTERN RAILWAY