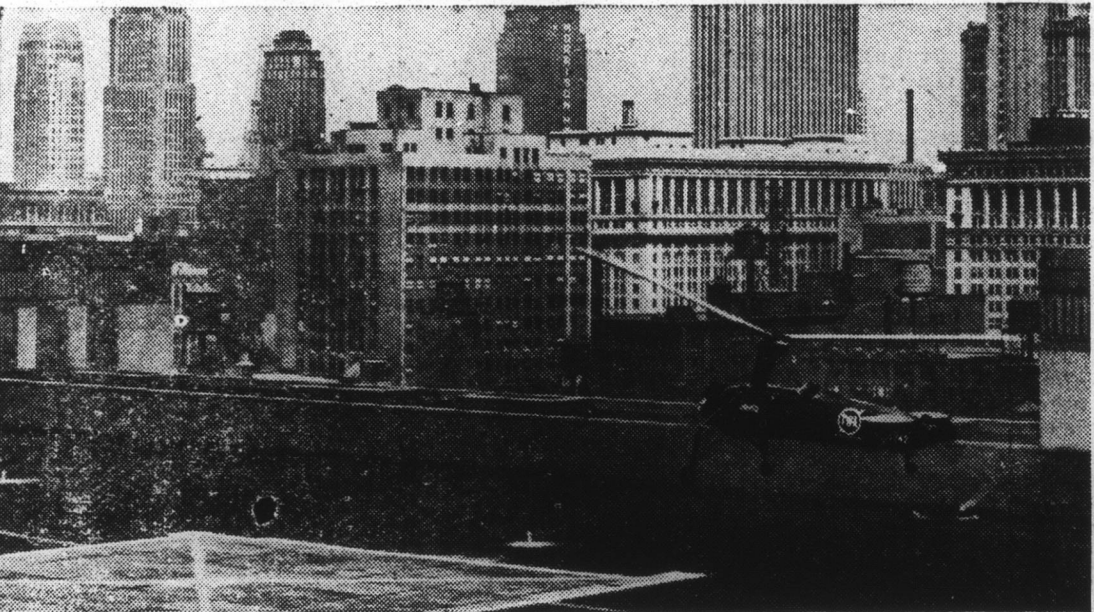


### Chinese War Buddies Demonstrate Unity



Leading a march of 20,000 Chinese who paraded through downtown New York as a symbol of unity against Japanese aggression were 60 Chinese veterans of the A. E. F. The parade, dramatizing China's life-and-death struggle for peace, justice and democracy drew several hundred thousand spectators and lent encouragement to the relief drives for civilian victims of the war in the Far East.

### Giro Lands Mail on Post Office Roof



A new chapter in air mail history was written in Chicago as Pilot Johnny Miller settled to the post office building roof with his autogiro carrying 135 pounds of mail from the Municipal airport. A feature of the program observing the twentieth anniversary of air mail flight, the demonstration showed the practicability of vertical landing and take-offs by means of the autogiro and the attendant saving in time.

### Actors Too Rough Both Get 'Shiners' In Fist Imbroglia

"Accidents Will Happen" To Play Here One Day Only, Wednesday

A fist fight between Warner Bros.' new star, Ronald Reagan, and actor Elliott Sullivan is part of the melodrama, "Accidents Will Happen" will be at the Dolly Madison Theatre on Wednesday.

Director William Clemens explained that the scrappers were to pull punches, be careful not to hurt each other, and above all, not to blacken each other's eyes. "I'd put this fight sequence at

the end of the picture, to play safe, but as the schedule stands I can't do it," he explained. "You'll just have to be careful, that's all. Ronnie gets a black eye, supposedly, but remember that's to be applied by the makeup man, not a fist!"

The boys promised faithfully. They rehearsed in good order. They emerged with a black eye each and the makeup man spent next day keeping the "shiners" white-washed.

### AMERICANS IN SPAIN

Washington D. C.—While all efforts to arrive at a correct estimate of the number of Americans who have taken up arms in the Spanish Civil War, advices from U. S. Consuls abroad place the number at approximately 3,000. A majority of them are serving in the ranks of the Red, or Loyalist, forces.

### Famed Nightclub Seen On Screen In New Comedy

"Cocoanut Grove" To Play At Palace Two Days, Tomorrow And Tuesday

The world's most famous nightclub is brought to the screen for the first time in Paramount's "Cocoanut Grove," the new film coming Monday and Tuesday to the Palace Theatre.

Distinctly new type of film fun is presented in this gay romance that revolves about the trials, tribulations, and the final success of an unknown swing band trying to break into the actual Cocoanut Grove, mecca of all young handleaders.

While the production is studded with hit tunes, the story has not been subordinated to music and specialties. On the contrary, each musical number makes what the movie scripters call a "story plot," contributing to the logical development of the plot.

Fred MacMurray, last seen with Carole Lombard in "True Confession," is starred as the swing-happy young band leader. His lovely leading lady is radio thrush Harriet Hilliard who plays a role in the picture identical with her occupation in real life. She is Mrs. Ozzie Nelson, and sings with her husband's band.

### Increase In Payments Under The Agricultural Conservation Program

Payments Available To All Farms Covered By Work Sheets On Which Soil Conserving Crops Are Grown

For the year 1938 the Washington office has announced an increase in all payments under the Agricultural Conservation Program which amount to less than \$200.

These payments are available to all covered by work sheets on which soil-conserving crops are grown and the necessary soil-building practices are carried out in 1938. These payments depend also on whether or not the tobacco acreage on the farm exceeds the acreage allotted for tobacco.

The total payment computed for any person, if less than \$200, with respect to any farm qualifying for payment shall be increased as follows: All payments are not computed, but enough to give one an idea.

(1) Any payment amounting to \$1.00.

(2) Any payment amounting to more than 71 cents but less than \$1.00 shall be increased by 40 percent;

(3) Any payment amounting to \$1.00 or more shall be increased in accordance with the following schedule:

Amount of payment computed	Increase in payment	Amount of payment computed	Increase in payment
\$ 1.00 to 1.99	\$ 0.40	\$32.00 to 32.99	\$10.40
2.00 to 2.99	0.80	33.00 to 33.99	10.60
3.00 to 3.99	1.20	34.00 to 34.99	10.80
4.00 to 4.99	1.60	35.00 to 35.99	11.00
5.00 to 5.99	2.00	36.00 to 36.99	11.20
6.00 to 6.99	2.40	37.00 to 37.99	11.40
7.00 to 7.99	2.80	38.00 to 38.99	11.60
8.00 to 8.99	3.20	39.00 to 39.99	11.80
9.00 to 9.99	3.60	40.00 to 40.99	12.00
10.00 to 10.99	4.00	41.00 to 41.99	12.20
11.00 to 11.99	4.40	42.00 to 42.99	12.40
12.00 to 12.99	4.80	43.00 to 43.99	12.60
13.00 to 13.99	5.20	44.00 to 44.99	12.80
14.00 to 14.99	5.60	45.00 to 45.99	13.00
15.00 to 15.99	6.00	46.00 to 46.99	13.20
16.00 to 16.99	6.40	47.00 to 47.99	13.40
17.00 to 17.99	6.80	48.00 to 48.99	13.60
18.00 to 18.99	7.20	49.00 to 49.99	13.80
19.00 to 19.99	7.60	50.00 to 50.99	14.00
20.00 to 20.99	8.00	51.00 to 51.99	14.20
21.00 to 21.99	8.40	52.00 to 52.99	14.40
22.00 to 22.99	8.80	53.00 to 53.99	14.60
23.00 to 23.99	9.20	54.00 to 54.99	14.80
24.00 to 24.99	9.60	55.00 to 55.99	15.00
25.00 to 25.99	10.00	56.00 to 56.99	15.20
26.00 to 26.99	10.40	57.00 to 57.99	15.40
27.00 to 27.99	10.80	58.00 to 58.99	15.60
28.00 to 28.99	11.20	59.00 to 59.99	15.80
29.00 to 29.99	11.60	60.00 to 60.99	16.00
30.00 to 30.99	12.00	61.00 to 61.99	16.20
31.00 to 31.99	12.40	62.00 to 62.99	16.40
32.00 to 32.99	12.80	63.00 to 63.99	16.60
33.00 to 33.99	13.20	64.00 to 64.99	16.80
34.00 to 34.99	13.60	65.00 to 65.99	17.00
35.00 to 35.99	14.00	66.00 to 66.99	17.20
36.00 to 36.99	14.40	67.00 to 67.99	17.40
37.00 to 37.99	14.80	68.00 to 68.99	17.60
38.00 to 38.99	15.20	69.00 to 69.99	17.80
39.00 to 39.99	15.60	70.00 to 70.99	18.00
40.00 to 40.99	16.00	71.00 to 71.99	18.20
41.00 to 41.99	16.40	72.00 to 72.99	18.40
42.00 to 42.99	16.80	73.00 to 73.99	18.60
43.00 to 43.99	17.20	74.00 to 74.99	18.80
44.00 to 44.99	17.60	75.00 to 75.99	19.00
45.00 to 45.99	18.00	76.00 to 76.99	19.20
46.00 to 46.99	18.40	77.00 to 77.99	19.40
47.00 to 47.99	18.80	78.00 to 78.99	19.60
48.00 to 48.99	19.20	79.00 to 79.99	19.80
49.00 to 49.99	19.60	80.00 to 80.99	20.00
50.00 to 50.99	20.00	81.00 to 81.99	20.20
51.00 to 51.99	20.40	82.00 to 82.99	20.40
52.00 to 52.99	20.80	83.00 to 83.99	20.60
53.00 to 53.99	21.20	84.00 to 84.99	20.80
54.00 to 54.99	21.60	85.00 to 85.99	21.00
55.00 to 55.99	22.00	86.00 to 86.99	21.20
56.00 to 56.99	22.40	87.00 to 87.99	21.40
57.00 to 57.99	22.80	88.00 to 88.99	21.60
58.00 to 58.99	23.20	89.00 to 89.99	21.80
59.00 to 59.99	23.60	90.00 to 90.99	22.00
60.00 to 60.99	24.00	91.00 to 91.99	22.20
61.00 to 61.99	24.40	92.00 to 92.99	22.40
62.00 to 62.99	24.80	93.00 to 93.99	22.60
63.00 to 63.99	25.20	94.00 to 94.99	22.80
64.00 to 64.99	25.60	95.00 to 95.99	23.00
65.00 to 65.99	26.00	96.00 to 96.99	23.20
66.00 to 66.99	26.40	97.00 to 97.99	23.40
67.00 to 67.99	26.80	98.00 to 98.99	23.60
68.00 to 68.99	27.20	99.00 to 99.99	23.80
69.00 to 69.99	27.60	100.00 and over	No Increase

ceeds the acreage allotted for tobacco.

The tobacco payments will be determined at the rate of one cent per pound for the pounds per acre of tobacco established for the farm for each acre in the tobacco acreage allotment.

Deductions for excess acreage will be at the rate of 10 cents per pound for the pounds per acre of tobacco established for the farm.

The total payment computed for any person, if less than \$200, with respect to any farm qualifying for payment shall be increased as follows: All payments are not computed, but enough to give one an idea.

(1) Any payment amounting to \$1.00.

(2) Any payment amounting to more than 71 cents but less than \$1.00 shall be increased by 40 percent;

(3) Any payment amounting to \$1.00 or more shall be increased in accordance with the following schedule:

Amount of payment computed	Increase in payment	Amount of payment computed	Increase in payment
\$ 1.00 to 1.99	\$ 0.40	\$32.00 to 32.99	\$10.40
2.00 to 2.99	0.80	33.00 to 33.99	10.60
3.00 to 3.99	1.20	34.00 to 34.99	10.80
4.00 to 4.99	1.60	35.00 to 35.99	11.00
5.00 to 5.99	2.00	36.00 to 36.99	11.20
6.00 to 6.99	2.40	37.00 to 37.99	11.40
7.00 to 7.99	2.80	38.00 to 38.99	11.60
8.00 to 8.99	3.20	39.00 to 39.99	11.80
9.00 to 9.99	3.60	40.00 to 40.99	12.00
10.00 to 10.99	4.00	41.00 to 41.99	12.20
11.00 to 11.99	4.40	42.00 to 42.99	12.40
12.00 to 12.99	4.80	43.00 to 43.99	12.60
13.00 to 13.99	5.20	44.00 to 44.99	12.80
14.00 to 14.99	5.60	45.00 to 45.99	13.00
15.00 to 15.99	6.00	46.00 to 46.99	13.20
16.00 to 16.99	6.40	47.00 to 47.99	13.40
17.00 to 17.99	6.80	48.00 to 48.99	13.60
18.00 to 18.99	7.20	49.00 to 49.99	13.80
19.00 to 19.99	7.60	50.00 to 50.99	14.00
20.00 to 20.99	8.00	51.00 to 51.99	14.20
21.00 to 21.99	8.40	52.00 to 52.99	14.40
22.00 to 22.99	8.80	53.00 to 53.99	14.60
23.00 to 23.99	9.20	54.00 to 54.99	14.80
24.00 to 24.99	9.60	55.00 to 55.99	15.00
25.00 to 25.99	10.00	56.00 to 56.99	15.20
26.00 to 26.99	10.40	57.00 to 57.99	15.40
27.00 to 27.99	10.80	58.00 to 58.99	15.60
28.00 to 28.99	11.20	59.00 to 59.99	15.80
29.00 to 29.99	11.60	60.00 to 60.99	16.00
30.00 to 30.99	12.00	61.00 to 61.99	16.20
31.00 to 31.99	12.40	62.00 to 62.99	16.40
32.00 to 32.99	12.80	63.00 to 63.99	16.60
33.00 to 33.99	13.20	64.00 to 64.99	16.80
34.00 to 34.99	13.60	65.00 to 65.99	17.00
35.00 to 35.99	14.00	66.00 to 66.99	17.20
36.00 to 36.99	14.40	67.00 to 67.99	17.40
37.00 to 37.99	14.80	68.00 to 68.99	17.60
38.00 to 38.99	15.20	69.00 to 69.99	17.80
39.00 to 39.99	15.60	70.00 to 70.99	18.00
40.00 to 40.99	16.00	71.00 to 71.99	18.20
41.00 to 41.99	16.40	72.00 to 72.99	18.40
42.00 to 42.99	16.80	73.00 to 73.99	18.60
43.00 to 43.99	17.20	74.00 to 74.99	18.80
44.00 to 44.99	17.60	75.00 to 75.99	19.00
45.00 to 45.99	18.00	76.00 to 76.99	19.20
46.00 to 46.99	18.40	77.00 to 77.99	19.40
47.00 to 47.99	18.80	78.00 to 78.99	19.60
48.00 to 48.99	19.20	79.00 to 79.99	19.80
49.00 to 49.99	19.60	80.00 to 80.99	20.00
50.00 to 50.99	20.00	81.00 to 81.99	20.20
51.00 to 51.99	20.40	82.00 to 82.99	20.40
52.00 to 52.99	20.80	83.00 to 83.99	20.60
53.00 to 53.99	21.20	84.00 to 84.99	20.80
54.00 to 54.99	21.60	85.00 to 85.99	21.00
55.00 to 55.99	22.00	86.00 to 86.99	21.20
56.00 to 56.99	22.40	87.00 to 87.99	21.40
57.00 to 57.99	22.80	88.00 to 88.99	21.60
58.00 to 58.99	23.20	89.00 to 89.99	21.80
59.00 to 59.99	23.60	90.00 to 90.99	22.00
60.00 to 60.99	24.00	91.00 to 91.99	22.20
61.00 to 61.99	24.40	92.00 to 92.99	22.40
62.00 to 62.99	24.80	93.00 to 93.99	22.60
63.00 to 63.99	25.20	94.00 to 94.99	22.80
64.00 to 64.99	25.60	95.00 to 95.99	23.00
65.00 to 65.99	26.00	96.00 to 96.99	23.20
66.00 to 66.99	26.40	97.00 to 97.99	23.40
67.00 to 67.99	26.80	98.00 to 98.99	23.60
68.00 to 68.99	27.20	99.00 to 99.99	23.80
69.00 to 69.99	27.60	100.00 and over	No Increase

### WANT ADS

For Piano Tuning, Call Person Co. Times, Roxboro, N. C.

5-12-15T - st

LOST — Black male hound — Grey around mouth—My name on collar — Liberal reward. Jack Hambrick 5-26-2TP-ts

FOR SALE — Poland China pigs.

### HITLER'S FAVORITE



Leni Riefenstahl, who received the film prize for this year for her Olympic film of last year. This photograph was taken on the occasion of her recent visit to Vienna. Leni is said to be the film favorite of Reichsfuehrer Adolf Hitler and there is a persistent rumor that if the chancellor ever marries, she will be the bride.

### Palace Theatre

Monday - Tuesday, May 30-31  
Fred MacMurray - Harriet Hilliard with The Yacht Club Boys - Ben Blue - Rufe Davis - Billy Lee - Eve Arden - Harry Owens and his Royal Hawaiian Orchestra  
"COCOANUT GROVE"  
Popeye the Sailor: "Fowl Play"  
Hearst Metrotone News - News While it is still news.  
No Morning Shows;  
Afternoons Daily 3:15-3:45;  
Evenings Daily 7:30-9:15;  
Admission 10-26c

Wednesday, June 1st  
John Barrymore - John Howard - Louise Campbell - Reginald - Denny - E. E. Clive - Porter Hall - Elizabeth Patterson - Nydia Westman  
"BULLDOG DRUMMOND'S PERIL"  
Pictorial Review No. 8 featuring "Song Writers" and "Bowling."