

Rate Reduction

(Continued From Front Page)

the Carolina Power and Light rates are expected to become a yardstick for the other major electric utilities serving North Carolina.

The reductions will bring 1939 savings of approximately \$232,000 to residential customers, \$164,000 to commercial lighting customers, \$120,000 to two classes of commercial power consumers and \$200,000 to textile mills in North Carolina. Similar but smaller savings will be experienced in South Carolina.

Minimum Bracket Cut

The highest residential rate, 10 cents per kilowatt hour five years ago, will be cut from the present five-cent level to 3.9 cents each for the first 50 kilowatt hours.

"Every class of residential customers will receive a reduction," Winborne pointed out, "but the largest reduction is given to the consumers under 50 kwhs, for the reason that the rate for large consumers is already low."

Ninety per cent of commercial lighting customers, those using less than 300 kwhs a month, also will get a 22 per cent reduction.

Commissioner Winborne made the following calculations of drop in costs: Residential, from \$1.25 to \$1 a month for 25 kwhs, \$2.50 to \$1.95 for 50 kwhs, \$4.00 to \$3.40 for 100 kwhs, -6.00 to \$5.80 for 200 kwhs and \$7.75 to \$7.50 for 300; and commercial, similar reductions up to 50 kwhs a month, from \$5.00 to \$3.90 for 100 kwhs, \$10 to \$7.80 for 200 kwhs and \$15 to \$11.70 for 300.

There were 48,193 residential and 10,878 commercial users in North Carolina in 1937.

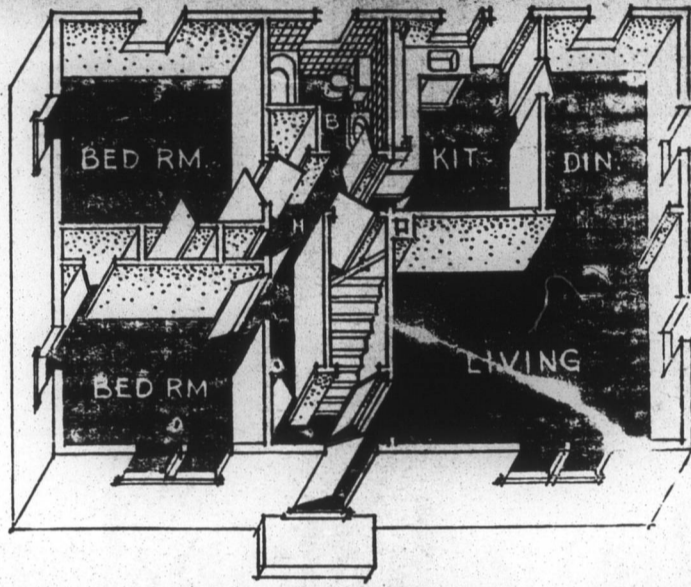
New Domestic Rates

The new residential rates are:

Well-Designed Small Home



This comfortable well-planned home in New Jersey was appraised by the Federal Housing Administration at \$5,250 and was financed with a mortgage insured by FHA for \$4,200, with amortization over a 15-year period. The floor arrangement provides a good degree of privacy, with access to the bath from all rooms without the necessity of traversing another room.



Other amendments proposed for turning over, after June 30, 1939, proper amounts of contributions collected from railroads to the Railroad Unemployment Compensation Board; limiting waiting period to two full weeks in any calendar year; simplify the figuring of benefits by placing the amounts in brackets; making provision so employers may appeal to the courts for Commission decisions on liability for contributions; prevent injunctions restraining the Commission from collecting contributions assessed against employers.

FOR NEWSPAPER SERVICE
DIAL 4501.



Raymond Kennedy of Cleveland, Ohio, didn't believe that he was earning the salary paid him by the government, so he resigned. His duties called for inspection of equipment valued at \$1,500,000. He felt that taking the manufacturer's word would be incompatible to his oath of office, and unable to inspect all of the equipment, resigned.

Chain Selves to Protect Cherry Trees



A group of militant women citizens, angry over the removal of the famous Japanese cherry trees at the Tidal Basin site of the proposed Jefferson memorial in Washington, D. C., chained themselves to the trees in an effort to prevent workmen from uprooting the famous trees.

3.9 cents each for the first 50 kwhs, 2.9 cents each for the next 100 kwhs, 1.9 cents each for the next 100 kwhs and 1.5 cents for all additional kwhs.

The present rates are five cents

each for the first 50 kwhs, three cents each for the next 50, two cents each for the next 150 and 1.5 cents each above 250 kwhs.

The top commercial rate will be 3.9 each for the first 1,000 kwhs compared with the present charge of five cents on the first 300 and four cents on the next 700.

Stand-by Charge Cut

Top stand-by charges for small commercial power users will drop from \$10.50 to \$9 a month for the first five kilowatts of demand and from \$1.60 to \$1.50 each for the next 35 kilowatts. Energy will be sold in the same class at 2.25 each for the first 90 kwhs, 1.5 for the next 2,500 kwhs and .85 for additional kwhs — compared with the charge now of three cents for the first 60, two cents for the next 2,000 and one cent for additional kwhs.

Advisory Council Approves Merit Amendment

Raleigh — Merit rating, or as Washington officials prefer to call it, experience rating, is included in the several amendments to the State Unemployment Compensation Law as finally approved last week by the State Advisory Council, and submitted to the Unemployment Compensation Commission for any action the State body may wish to take. If finally approved, the amendments will be presented to the session of the General Assembly convening this week.

Washington authorities raised objections to the experience rating plan, in one respect, because the plan proposed places a premium on regular employment by a reduction of contribution rates by the employer, while it does not provide for a penalty increase for irregular employment by making the rate higher, to make up for the reduction. Another objection is that the experience rating plan would be almost prohibited in administrative cost, according to the Washington official view. Chairman Charles G. Powell and other members of the Commission realize it would be hard to administer. The plan would not become effective until three years of experience is accumulated.

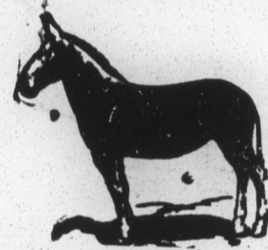
Another amendment would provide a plan for seasonal employment, by making employees who become unemployed during the season of operation eligible for benefits, but would not allow benefits after the sea-

son had closed.

JUST ARRIVED

Carload of Excellent

Mules and Mares



Get everyone's prices and then come to see me. I will show you how to save \$25.00. The oldest animal in my load is six years old.

J. W. PLEASANTS

VIRGINIA, VA.

Parachute Jumper Makes 30,000 Foot Leap



No celestial invader is this intrepid man. Two attendants at the Villeneuve-St. George's air field in Paris, France, carry a French parachute jumper from the field after he made a successful jump from an altitude of 30,000 feet. He is wearing the new suit that has been perfected for stratosphere flying.

San Jacinto Tunnel Nears Completion



Completing a five-year job, hard-rock men holed through in the San Jacinto tunnel recently. Within a few months 1,000,000,000 gallons of the Colorado river will rush through this 13-mile bore daily in its haste to quench the thirst of Los Angeles and 12 other southern cities. It was one of the biggest tunneling jobs ever attempted.

2nd SALE
OPENING DAY,
Tues., January 10

1st SALE

Wednesday, January 11th

We do not expect any more blocks on the big Danville market. Come to see us for a good sale every day. We are going to do all that we can to maintain our high average.

Virginia-Carolina Warehouse

DANVILLE, VIRGINIA

H. W. Winstead Prop. W. N. Terry

TRADE IN Your Old SHOES

For New Ones At

Roxboro Shoe Store

For 3 Days Only

Thursday, Friday, Saturday

January 5, 6, 7

We will allow the following for mens and womens old shoes (no matter how old) 50c a pair on the purchase of \$2.98 shoes; 75c on \$3.85 shoes, and \$1.00 on \$4.85 shoes. The old shoes will be donated to charity.

EXAMPLE:

\$2.99 shoes less old shoes . . . \$2.49

\$3.85 shoes less old shoes . . . \$3.10

\$4.85 shoes less old shoes . . . \$3.85

Tax added to all purchases. This holds good on any shoe in stock.

Never before have you had this opportunity to get fine quality shoes and an allowance for your old ones, and at the same time contribute something to others. Here's your chance to help yourself and others too. Someone will appreciate your old shoes. Remember only 3 days. So hurry.

ROXBORO SHOE STORE

Next To Roses Kaplan Bldg. N. Main St. Roxboro, N. C.