

Human Engineering Offers New Hopes Of Lowering Traffic Accident Deaths

Detroit — If you quarrel with your wife at breakfast and then, while driving to the office, clip some fenders or pass a red light, there's probably a connection.

The idea that emotional upsets can be responsible for highway accidents as much as liquor, speed or mechanical troubles is one of the beliefs developed in "human engineering" — the science of breaking down the human factor in the traffic hazard equation.

This is a field of trained psychiatrists, and therefore limited, but, in the opinion of James Stannard Baker, secretary of the committee on the driver of the National Safety Council, it is one of the chief hopes in the fight to reduce highway deaths.

But, leaders agree, human engineering must be explained greatly before it can become a positive influence in reducing the traffic toll.

In Detroit, the recorder's court has what is believed to be the nation's most complete traffic clinic, yet, since it was set up in October, 1936, only 1,000 cases have been analyzed.

Dr. Lowell S. Selling, the director, explains that the cases, most of them hit-and-run cases, are taken on recommendation of the court.

The patient is first given a 22-page questionnaire covering traffic laws and automobile operation, his parentage, education, illnesses, etc. An intelligence test and physical examination follow.

"Everyone seems most interested in the apparatus tests," says Dr. Selling. "But that only occupies about 20 minutes of the four to six hours the complete test takes."

When all information has been correlated, the clinic makes a recommendation to the judge; in some cases hospitalization is suggested, in others discontinuance of driving. And in some, Dr. Selling says, it is recommended that there be no discipline, that might be harmful.

In 1,000 cases—handled at the rate of two a day, now—50 per cent of those tested were shown to have been feeble minded or suffering from some other serious mental ailment, 5 per cent have been color blind, 5 per cent have had bad vision, 8 per cent have suffered from some physical defect, and 1-10 of 1 per cent were found suffering from "sericus neurological disorder."

Queen Mary's Tour No Land Of Make-Believe

South Boston, Va.—No make-believe Cinderella can step into a coach and ride away into the land of romance as convincing as Mary Pickford, but when the queen of the National Tobacco Festival gets into her coach in picturesque Halifax, she will ride into a romantic land that is not make-believe. For the time when tobacco was coin of the realm to this time when the golden leaf is still virtually just that, in the South Boston community plantation-land has continued about the same, constantly prosperous, colorful and romantic.

Warm Welcome



Miss Frances Lawson of South Boston, Virginia, waves a warm welcome to visitors to the "heart of tobacco land," where tobacco will be king during the fifth annual National Tobacco Festival on September 7 and 8. Miss Lawson will take part in "Tobacorama," mammoth dramatic production depicting the story of tobacco, which will be a major festival feature.

Mary Pickford thus will open this year's Plantations Tour, which will stress the century mark in atmosphere, costumes, carriages and hospitality, not only for the queen but the general public. Each of the old houses in which Mary Pickford will be received has been lived in continuously by the family of the original builder. Assisting Hostesses in these houses will wear belicem dresses (not costumes of the empire and anti-bellum periods. Venerable vehicles will move again; a surry, a gig, and a coach.

When the coach, driven by "Uncle Henry Moore," long coachman at "Magnolia Hall," the adjoining estate in the village, calls at "Grand Oaks" for Miss Pickford it will carry her down the shady road to the quaint brick church, which is the oldest

building in the village, having served three denominations. Here there will be a concert, which will be tribute to the 1939 queen as an artist. She will ride through the grounds of two pillared mansions of the Revolutionary period on the way to Clarkton, the largest and most individual plantation in the country. She will also visit Seaton, notable for its odd collection of antique costumes and furniture.

For further information about the tours write National Tobacco Festival, South Boston, Virginia.

"No flowery road leads to glory."

—LaFontaine

Palace Theatre

ADVANCE PROGRAM
From Thursday, Aug. 31 thru
Saturday, Sept. 2

Motion Pictures Are Your
Best Entertainment

Thursday - Friday,
August 31 - September 1
Ginger Rogers - David Niven
with Charles Coburn - Frank
Albertson - E. E. Clive in
"Bachelor Mother"

Ginger as the glamorous shop-girl "mother" of a doorstep baby — wooed by Playboy David, chased by Jitterbug Frank, torn twixt loyalty, love and a living!

Paramount Pictorial No. 11
Travel Talk: "Glimpses of
Australia."

No Morning Shows;
Afternoons daily 3:15-3:45;
Admission 10-25c;
Evenings daily 7:30-9:15;
Admission 10-30c.

Saturday, Sept. 2
Tex Ritter with his horse
"White Flash" in
"Riders of the Frontier"

Terror rules the Texas range — till this cowboy wildcat storms an outlaw fortress of fear to smash the ruthless "cattle trust"!

Episode No. 4 of the serial "Overland with Kit Carson" ("The Ride of Terror") with Bill ("Wild Bill Hickok") Elliott - Iris Meredith - Bobby Clack
Fashion Forecast No. 4 (In Color)

Matinee 2:30-4:00; Admission 10-25c; Evening 7:30-9:45. (Box office opens at 6:45.)
Admission 10-30c.

LUMBER

Due to increased activity in the construction of small homes, lumber consumption in the United States during 1939 will be from 10 to 15 per cent greater than it was in 1938, the Department of Commerce predicted recently.

BY-PRODUCTS

Skim milk and cull potatoes are

being used to make wafers, chips, sticks, or croutons to develop a new use for agricultural by-products.

"Glory is the true and honorable recompense of gallant actions."

—Le Sage

Welcome Teachers

We Are Glad To Have You Back With Us Again.

Person County, in our opinion, has as fine a group of teachers as will be found anywhere in any city in North Carolina.

We feel that our schools are efficiently managed and supervised. We further believe that our children have the very finest opportunity to receive a good education.

Our school system in Person County is worthy of every ounce of support we are capable of giving. We should boast it and lend cooperation whenever possible.

Bring your car to us for expert repair work, or if you are thinking of trading we have a good proposition for you.

for Economical Transportation



TAR HEEL CHEVROLET CO.

Glenn Stovall

William Yancey



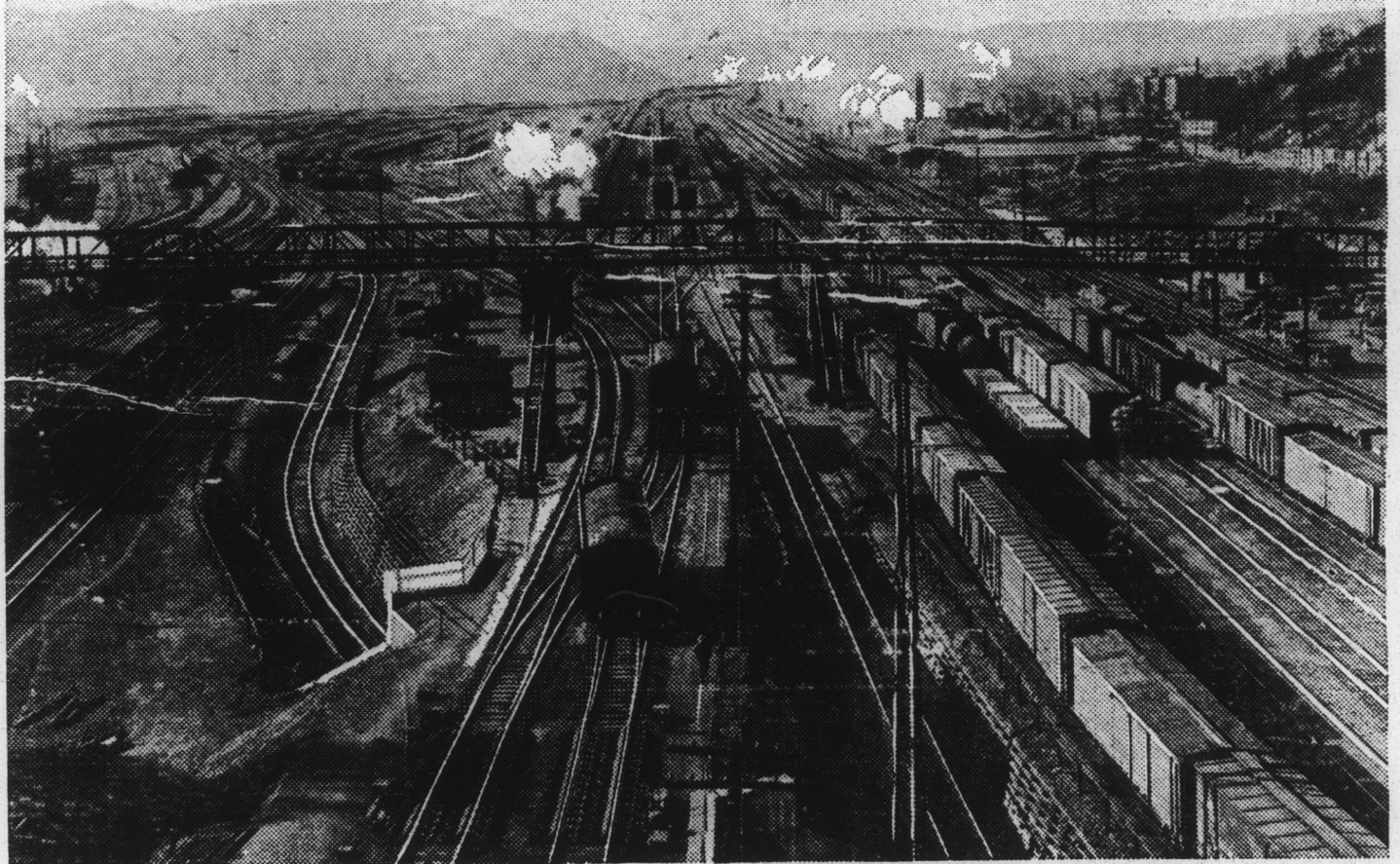
Welcome Teachers

To Person County's new teachers and to the old, we greet you with a hearty welcome. We know that you will like Person County and we are going to do everything within our power to make you enjoy your visit here. We urge all teachers to let us know the pictures you would like to see and we will get them for you.

For The Best In Entertainment Visit Your Theatres Often.

Palace and Dolly Madison Theatres

Mass transportation is modern transportation



YOU'VE heard a lot about the modern wonders of mass production—how it brings down the cost of things you buy—how it makes possible most of the modern comforts we enjoy.

But did you ever stop to think that modern mass production would be impossible if there were no mass transportation to carry the raw materials to the factories and carry the products forth to every corner of the land?

The only nation-wide mass transportation in America is the railroads, with their 240,000 miles of super-highways built and maintained by private enterprise.

Over these super-highways travel some 1,760,000 freight cars—rolling up an average total of 13,000 miles per car each year. These

cars, linked together in trains and pulled by a single power plant, do a mass transportation job which no other common carrier could begin to handle—and at an average charge of about one cent for hauling one ton of freight a mile—far less than the average charge made by any other carrier providing general transportation.

Isn't that what you'd call modern transportation—transportation able to carry all the products that modern factories can produce and modern farms can raise, and do it so smoothly that most people never give it a thought?

When you look at the job the railroads are doing, you can see why government should give all "forms of transportation" equal treatment and an equal opportunity to earn a living.

NORFOLK AND WESTERN RAILWAY



Super Suds (for washing dishes) Regular size, 3 for... 27c
Con. Super Suds, (washing clothes) Regular Size, 3 for... 27c
Giant Octagon Soap, 4 for 19c
Special Octagon Soap, 2 for 5c
Large Octagon Powder, 3 for... 14c
Special Octagon Powder, 2 for... 5c
Octagon Toilet Soap, 3 for 14c
Octagon Cleanser, 2 for... 9c
Octagon Granulated Soap, 2 for... 19c
Klez (Fumice) Soap, 2 for 9c
W. L. BAETON
Timberlake, N. C.