



The clutch and clutch pedal have been entirely eliminated in the 1940 Oldsmobiles equipped with the new "Hydra-Matic Drive." With this sensational device, exclusive to Oldsmobile, all the driver has to do is step on the accelerator, steer and stop. Photo shows the front compartment of an Oldsmobile equipped with "Hydra-Matic Drive."

### JOSEPH HALL TO RECEIVE AWARD

Honor To Be Granted At National Convention In Kansas City.

Joseph Hall, member of the Bethel Hill Chapter of Future Farmers of America, has been nominated by the national executive committee for the "American Farmer Degree," according to R. J. Peeler, Executive Secretary of the State Association. He will receive this degree at the National Convention of the Future Farmers of America which will be held in Kansas City, October 16-20. This degree is the highest awarded by the national organization and members must show outstanding qualities to receive this high honor.

During Hall's four years in high school, he not only ranked high in scholarship, but also took an active part in school and community activities. He held the following offices in the local F. F. A. organization: secretary of the local chapter, vice-president of Durham-Person-Orange Federation, president of local chapter, and secretary of the State Association. He was on the livestock judging team for four years.

Hall received his "Carolina Farmer" degree in 1937. His supervised practice record has been outstanding, showing receipts of over \$1,300.00 with a labor income of \$750.00. His savings account shows a balance of \$315.00 and he has \$435.00 invested in farming.

In other school activities, Hall has been very active. He was elected president of the student council in 1938, was a member of the football squad and basketball team for two years. During his

### New Chevrolets May Be Seen First On October 14th.

Detroit.—Chevrolet's new 1940 models will make their public bow on October 14, W. E. Holler, general sales manager, announced here today. The cars, he said, will be shown simultaneously at the National Automobile Show in Grand Central Palace—where, as volume leader in the industry, Chevrolet again had first choice of space—at the General Motors special showing in the Waldorf-Astoria, at several important local auto shows, and in dealers' salesrooms throughout the country.

In line with the company's experience in recent years, Mr. Holler said, an important part of Chevrolet's announcement advertising has been scheduled in newspapers. Some 6,800 daily and weekly papers from coast to coast are on the schedule, other media being to supplement and round out this effort. Pre-Announcement advertising has already begun to appear, and space will be increased as the new car introduction date approaches.

Formal presentation of its new product, and the selling program for 1940, will be made to Chevrolet's wholesale field organization and the Central Office sales department staff at the annual national sales convention scheduled to open September 28. The sessions will last two days, and will be attended by about 400 key members of the organization.

four years in high school he received the citizenship award, award for the best agricultural student, and prizes in the state essay and supervised practice contests.

### SOUTH CONSERVING PULPWOOD BETTER

Pulpwood Industry Making Progress In Its Program—Much To Be Done.

Atlanta — The pulpwood industry is making progress in its program of forest conservation in the south, Frank Heyward, Jr., general manager of the Southern Pulpwood Conservation association, said here today.

Individual mills have improved standards of cutting practices, he said, and forest rules to prevent clean cutting of lands are being enforced.

Selective cutting is practiced throughout the southern territory extending from Virginia to Texas, and fire protection, essential of any lumbering industry, is receiving attention of industrial leaders and private land owners. Technical foresters are in many instances employed to enforce conservation regulations adopted by the mills.

Thus does Heyward sum up advancement noted within the last few months in what he said was the first wood-using industry in the south to adopt a program of self-regulation.

The industry, contrary to general belief, is not new in the south, Heyward said. Mills have been in operation 30 years or more and have cast millions of dollars into trade channels. But within the last five years developments have resulted in expenditure of an estimated \$200,000,000 in new capital for mills, equipment and forest lands.

Primary cause of this expansion, said Heyward, was the abundance of low-priced raw material in the south; millions of acres of pine forest lands suitable

for growing pulpwood merely awaited proper development.

"Expansion operations thus were started, and at first were confined largely to the brown paper products," he said, "but now new interest is being expressed in the making of white paper, not only from pines, but from hardwood trees as well.

"In all there are 47 pulp mills in operation in the south, and three under construction.

Heyward made it clear, however, that there is still much to be done and some are not in sympathy with the aims of pulpwood leaders.

"Although it is currently believed by many that there is grave danger that the pulpwood industry will deflate the southern timber supply, that belief is erroneous," he said.

"Actual figures show that only six percent of the drain on timber resources can be attributed to pulp mills. In fact, the U. S. forest service says that 46 percent of the south's timber is used for lumber, 33 percent for fuel, five percent for railroad ties, three percent for fence posts. That leaves only six percent for the pulpwood industry."

### Clamor For Passes To Leave Europe Not So Great Now

Washington — The maritime commission reported today a sudden decline in the clamor for passage home from Europe.

The Paris office of the United States lines advised the commission that, although the S. S. Shawnee delayed its sailing from a French port for two days, its books were considerably less than the 500 passengers it can accommodate.

The commission said three other vessels chartered to provide passage for American refugees were enroute to Europe but advice indicated they, too, may be forced to return with accommodations only partly used.

### Allensville Seniors At Chapel Hill For 'Senior Day' Event

Allensville High school senior class went to Chapel Hill Saturday for the "High School Senior Day" program. They saw the football game between the University of North Carolina and The Citadel, which the Tar Heels won 50 - 0. Before the game several high school bands, including those from Greensboro, Raleigh, and Burlington, gave a band concert. Between halves Pete Davis, president of the University student body, welcomed the 15,000 seniors who attended. Dr. Frank P. Graham, president of the Greater University, spoke briefly. Dr. J. Henry Highsmith, president of the North Carolina Education Association, and R. B. House, University dean, also made short talks. Gov. Clyde R. Hoey made a brief address.

The senior platoon of The Citadel went through military drill between halves.

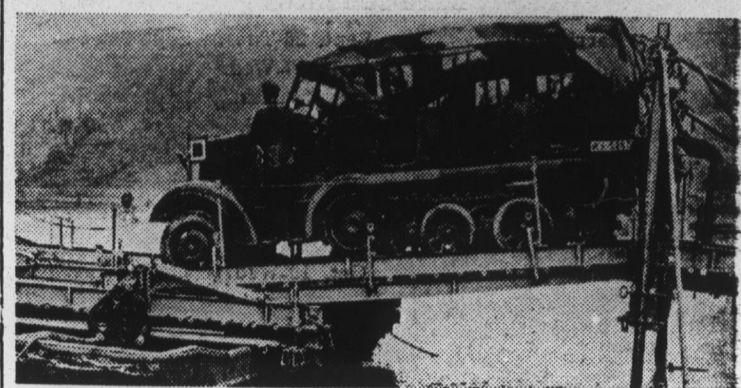
The Allensville seniors were accompanied by three members of the faculty, Mr. and Mrs. Satterwhite and Mr. Humphries, and by Oliver Averett and Malcolm Umstead. The seventeen students making the trip were: Allie and Mallie Brann, Geraldine Moorefield, Louise Solomon, Alfonza Dunn, Catherine Averett, Wesley Gentry, Thomas Gentry, Lizzie Slaughter, Cecil Knott, Alonzo Gravitte, Ruth Pullium, Frances Evans, Gladys Gentry, Lloyd Averett, Romie Lee Duncan, Hallie Crumpton.



We sell Eye Glasses to satisfy the eyes — \$2.00 to \$8.00

THE NEWELLS Jewelers Roxboro, N. C.

### Nazi War Machine Fords Pontoon Bridge



A German multiple-wheeled military car, also provided with tractors, crosses a pontoon bridge erected by army engineers. This phase of German military preparedness is vitally important to Nazi forces in Poland, where retreating Poles destroyed bridges.

### Small Farmers Buy Modern Machinery With FSA Loans

Machine-age agriculture is creating new demands on the small farmers of the nation.

Use of machinery on the farm is increasing as farmers battle to maintain their profit margins by lowering operating costs.

Small farmers needing big machinery can chip in and buy it through the Community and Co-operative Service program of the Farm Security Administration, according to J. B. Slack, Chief of the Rural Rehabilitation program in Region IV, which includes the states of North Carolina, Virginia, West Virginia, Kentucky and Tennessee.

Under this plan small farmers are enjoying the benefits of modern farm machinery and equipment that they could not afford alone. Much needed services or equipment can be financed by the FSA Community and Co-operative Service program when two or more farmers agree to use the same service or property.

Loans can be made for a Community Service owned and operated by one farmer, "the Master Borrower," for the benefit of a group; operated jointly by several members of the group; or by

the group as a whole. These loans are made to low-income farmers who cannot get adequate credit from any other source and are repaid within one to five years. Three percent interest is charged on equipment and service loans. Five percent interest is charged on loans used for the purchase of supplies and materials consumed during the year.

Mr. Slack pointed out that more than 4,100 farmer groups in the South already had borrowed over \$2,200,000 from the Farm Security Administration to finance these services. There are 109,969 farm families participating in these group loans.

He urged that anyone interested in these loans get in touch with the county FSA Supervisor or the County Agent at once.

Purchases by the farmer groups include 402 tractors, 234 mowers, 373 combines, 272 hay balers, 186 rakes, 99 harvesters, 119 binders, 150 harrows, 41 threshing machines, 55 ensilage cutters, 51 peanut pickers, 16 cultivators, 15 planters, 9 terracing machines, 19 lime-grinding plants, 12 lime spreaders, 103 syrup mills, 37 feed mills, 30 hammer mills, 24 dusting machines, 5 saw-mills and three gins.

"For unto us a child is born, unto us a son is given: and the government shall be upon his shoulders."

—Isaiah.

### Poland Again Battles for National Existence



Boundaries of Poland in 1560, after the marriage of Queen Jadwiga of Poland and King Jagello of Lithuania. Lands of the two nations were combined.



Poland began to disintegrate with the rise of power of the Teutonic knights in East Prussia. Russia began taking land when the Teutons caused internal strife.



Poland's first partition took place in 1772, when Russia, Prussia and Austria each took lands; Russia to the northwest, Prussia to the east, Austria, south.



Russia and Prussia alone shared in the second partition of Poland, which left that country with little original territory.



The third partition, occurring in 1795, caused Poland to disappear altogether. Russia, Prussia and Austria shared the spoils.



Poland declared its right to autonomy in 1918. Shaded area shows old German boundary restored by Hitler's decree.

# TIME TO CHANGE

## TO BETTER LIGHT for BETTER SIGHT

Of course, the illustration above is absurd, but the suggestion, "Change to Better Light for Better Sight" is good... it's thrifty... for everyone!

Shadows and glare combine to make hard work out of easy pleasant tasks... reading and sewing strain the eyes, upset the disposition. Inadequate light may even be the direct cause of numerous serious ills.

**SIGHT IS PRICELESS—PROPER LIGHT IS CHEAP!** I. E. S. Floor, Table and Wall-type Sight-Saving Lamps are **inexpensive**; they **eliminate glare** and **provide adequate light properly directed**. Modern styling makes them ideal for any decorative scheme, too.

You are invited to get the complete details about **LIGHT CONDITIONING** your home—there are no obligations.

**SEE YOUR**  
**Electric Dealer**  
CAROLINA POWER & LIGHT COMPANY