

**FARM QUESTIONS ANSWERED**

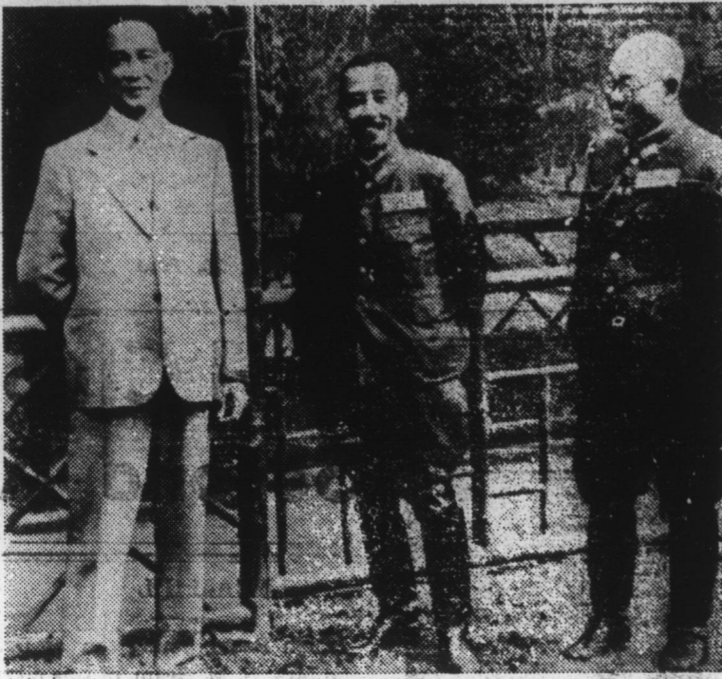
Question: Is it safe to feed silage to young calves?

Answer: Good, well-cured silage may be fed the calf at from three to four months of age. Only about two pounds should be fed at first and this may be gradually increased as the calf grows older. A six months old calf may be fed from five to fifteen pounds daily during the winter months. Care should be taken not to give the animal too much silage as this feed is laxative and too much will cause scours. At the first sign of indigestion, the silage and legume hay should be replaced with grass hay and the animal given a dose of from one to three tablespoons of castor oil mixed with a pint of fresh milk.

Question: How long does it take to properly cure meat?

Answer: Three days for each pound in the individual piece of meat is usually allowed for curing. This applies whether the brine cure or dry cure method is used. However, with the brine cure the meat should be repacked on the seventh and twenty-first days whereas with the dry cure the meat is repacked only on the seventh day, but must have additional curing ingredients rubbed in thoroughly at that time. Full directions for both "cures" are given in Extension Folder 34 and copies may be had free upon application to the Agri-

**Chinese Puppet Meets Jap Puppeteers**



Wang Ching Wei, left, latest Chinese puppet with whom the Japanese are attempting to establish a new Chinese government, jokes with two officers of the friendly Japanese staff. Wang has been branded a traitor by countrymen loyal to Chiang Kai-shek, and his life is forfeit should he fall into Chiang's hands.

cultural Editor at State College.

Question: When should land be prepared for planting the early garden?

Answer: All land with a clay subsoil should be plowed in the fall or early winter to a depth of from ten to twelve inches provided too much of the subsoil is not turned up to the surface. The plowed land should be left in the rough as turned up by the plow. The freezing and thawing will pulverize and mellow the soil. It will also aid in the destruction of insect pests

and plant diseases by exposing them to freezing weather. This method of preparation will permit earlier planting in the field and a resultant earlier crop of green vegetables.

**TOURISTS NOW GO SOUTHWARD**

Motor Club Reports Closing Of European Travel Service Will Increase Home Tours.

The biggest winter tide of vacation travel in history will turn southward this year, according to Miss Nina Abbitt, Roxboro manager of the Carolina Motor club, who bases her opinion on a survey of travel trends recently completed by the American Automobile association.

"Reports from AAA headquarters indicate increasing momentum of the travel movement which during the summer broke all previous records," Miss Abbitt said.

"The rising business curve, the 50 percent gain in car sales, increases in gasoline consumption and advance routings at travel desks all points to the greatest volume of southern travel ever seen. Already, vacation areas in this section are making ready for a record-breaking influx of visitors."

Pointing out that foreign tourist travel had been ended by the outbreak of hostilities, the motor club official declared that the United States could expect the greatest portion of \$250,000,000 which Americans have been accustomed to spending each year on foreign vacations.

"Even without this added impetus, vacation travel this winter would have been of unusually large proportions. Winter vacation trips have been growing in popularity for a number of years and cars are being used more and more for long-distance jaunts to the warmer climates," she concluded.

**Norfolk-Western Will Continue Its Grand Circle Tours**

The popular, low-priced \$90 "Grand Circle" railroad tours, which were in effect during the two World's Fairs, will be continued another year, to October 31, 1940, Norfolk and Western Railway passenger officials announced today.

At the special rate, a passenger can travel by coach from any point in the United States to either New York City or San Francisco, then across the continent to the other city and back to the starting point, without retracing routes. Liberal stop-over privileges give tourists full opportunity to visit points of interest such as the National Parks and the nation's famous resorts. Passengers traveling on the Norfolk and Western to the west coast have a choice of routes which include: via Chicago, St. Louis, Memphis and New Orleans. Tourists also may be routed via Portland, Oregon.

Reports reveal that since the low fare went into effect, circle tours of more than 10,000 miles can be made at the low rate.

**Neighborhood An Influence In Ownership**

Neighborhoods in many cases fall to prices long before the houses. Because of this the Federal Housing Administration believes that neighborhood factors have an important influence in satisfactory home-ownership experience.

Loans which the FHA insures must be for houses built with a sensible regard for the relationship of the home and its neighborhood. Good mortgage loans can be made almost anywhere if the homes fit their surroundings, excluding slum areas where the housing is so bad it should be demolished.

A home being built in any neighborhood should conform in design and type with other homes. By observing general neighborhood standards, the FHA often prevents people from building homes in the wrong locations and saves them from loss and regret.

**Unemployment Fund Shows Gains**

Raleigh—Receipts of the North Carolina Unemployment Fund will have passed the \$299,000,000 mark by the time this appears, receipts through November 16, having reached \$28,981,047.42, of which 28,399,898.96 is in employer contributions and 581,148.46 is in interest on the State's balance on deposit in the U. S. Treasury.

Benefit payments to unemployed and partially unemploy-

ed workers through November 16 reached \$12,335,653.16, leaving a balance in the fund (in both the er's reserve account fund) of "pooled fund" and the employ-

\$16,645,388.26, as of that date Chairman Charles G. Powell, of the State Unemployment Compensation Commission, reports.

**For Quality COAL CALL 3371**  
Gas - Oil - Tires - Tubes - Coal  
Central Service Corporation  
Roxboro, N. C.

*All low-priced cars have performance*  
**BUT CHEVROLET HAS BETTER PERFORMANCE!**

*The Special De Luxe Sport Sedan, \$802\**

Chevrolet for '40 has hair-trigger getaway! Its Super-Silent Valve-in-Head Engine enables you to accelerate from 5 to 25 miles per hour with almost unbelievable speed! Its Exclusive Vacuum-Power Shift gives an exclusive kind of handling ease—its Perfected Hydraulic Brakes the very highest degree of safety! And in the combination of all these factors—in over-all performance with over-all economy—the motor world just doesn't hold its equal! Eye it... Try it... Buy it... and convince yourself, "Chevrolet's FIRST Again!"

**85-H.P. VALVE-IN-HEAD SIX \$659**

AND UP, \*at Flint, Michigan. Transportation based on rail rates, state and local taxes (if any), optional equipment and accessories—extra. Prices subject to change without notice. Bumper guards—extra on Master 85 Series. A General Motors Value.

**"Chevrolet's FIRST Again!"**

**TAR HEEL CHEVROLET CO., INC.**  
Main Street Roxboro, N. C.

**SCRAP TOBACCO**

We are interested in buying scrap tobacco from farmers or truckers delivered at our factory on Lynn street in Danville, Va.

**J. M. EDMUNDS CO., INC.**  
DANVILLE, VA.

**NATURAL CHILEAN NITRATE OF SODA**

**Plenty of it! No Increase in Price**

There will be no increase in the present price of Natural Chilean Nitrate of Soda during this entire season ending June 30, 1940. You can get all you want. Large supplies are in the United States now and ships are regularly bringing in additional cargoes to meet the expected increase in demand.

Plenty for everybody's needs... no increase in price.

**YAS SUH, FOLKS.. AN' NOW WE'S BACK ON YO' RADIO**

**TUNE IN Beginning SATURDAY NOV. 25 SUNDAY NOV. 26 ON YOUR RADIO**

Enjoy the Uncle Nathele program every Saturday night on WSB, WRVA, and WSM, and every Sunday afternoon on WIS, WPTF, WBT, KWKH, WJDX, WMC, WWL, WAGF, WDBO, WSFA, WJRD, WJBY.

**CONCENTRATED SUPER SUDS (IN THE BLUE BOX) 27¢**

Palmolive Soap, 3 for Super Suds (for washing dishes)	20c
Regular Size, 3 for	27c
Giant Size, 2 for	38c
Con. Super Suds (for washing clothes)	
Regular Size, 3 for	27c
Giant Size, 2 for	45c
Giant Octagon Soap, 4 for 19c	
Special Octagon Soap, 2 for 5c	
Large Octagon Powder	3 for 14c
Special Octagon Powder	2 for 5c
Octagon Toilet Soap, 3 for 14c	
Octagon Cleanser, 2 for 9c	
Octagon Granulated Soap, 2 for 19c	
Octagon Soap Chips, 2 for 19c	
Crystal White Toilet Soap, 3 for 14c	
Hollywood Toilet Soap, 3 for 14c	
Klex (Pumice) Soap, 2 for 9c	
Universal Toilet Soap, 3 for 14c	
Vogue Toilet Soap, 3 for 14c	
Fair Sex Toilet Soap, 4 for 16c	
Palmolive Beads	5c

**W. L. BARTON**  
Helena, N. C.

**The pause that refreshes...helps on the job**

No matter what your job may be, a refreshing pause for ice-cold Coca-Cola helps to keep your feet on the ground. You get the feel of refreshment—and you're ready for work again.

**COCA-COLA BOTTLING WORKS**  
Roxboro, North Carolina.

Drink **Coca-Cola** Delicious and Refreshing

5¢