

### County Contains Thirty Retailers

Raleigh, Jan. 11—There are 30 places of business in Person county licensed by the state to sell beer at retail, it was announced today.

Figures, compiled by the Brewers and North Carolina Beer Distributors Committee as of January 1st, disclosed that the state has issued retail beer licenses to 4,689 dealers in North Carolina.

Mecklenburg County's 321 easily tops Guilford's 231. Forsyth is third with 210, and Buncombe fourth with 181. Others in order are Wake 162, New Hanover 161, Durham 144, Rowan 121, Robeson 119, and Rockingham and Gaston tied with 101 each.

For the three-month period ended December 31st, the State Department of Revenue issued 303 beer licenses, but to date—4,689—is under the 1938-1939 peak of 5,029, it was announced. However, it is anticipated that the number of rural licenses will exceed 5,000 before the 1939-1940 tax year (for beer) ends April 30.

This number includes 37 places of business which have lost their licenses as a result of the beer industry's "clean up or close up" campaign in North Carolina, it was explained. Edgar H. Bain of Goldsboro, three-times state senator and state director of the Brewers and North Carolina Beer Distributors committee, directs the drive against objectionable beer outlets in the state.

### Actor Holds Speed Record

Robert Stack, the personable young man who kisses Deanna Durbin in Universal's "First Love," now at the Palace theatre, has as a hobby the building of "hopped up" flivvers and speed-boats.

He holds the Lake Muroc speed record of 115.68 miles per hour, established with one of his self-built cars, and in 1936 won the International Outboard Motorboat Championship at Venice, Italy.

At present he is building another outboard motor boat, which, with the "hopped up" engine he will install, he hopes will win him more championships.

### CHAMPION

Remus Edwards, a member of the Mt. Vernon club, has been named cotton champion of Ruthford county, producing 960 pounds of lint cotton on a measured acre which netted him \$60 above expenses.

## Their Education a Matter of Statewide Concern



As South Dakota's famed Schense quadruplets reach their ninth birthday their education becomes a matter of concern to the entire state. A campaign is now in progress to raise sufficient funds to enable them to take advantage of educational facilities at a boarding school. The quadruplets, who live on a farm near Hecla, are, left to right, Jean, Joan, Jimmy and Jay. Hundreds of interested South Dakota residents are contributing to the fund, which will guarantee the quadruplets a thorough education. However, the four children couldn't be bothered thinking about educational problems during their birthday.

### Five Enlistments In Army Reported

Five Roxboro and Person county men have recently enlisted in the United States army, according to announcement from Hubert H. Stephens, army recruiting agent, of Durham. The men, with their local addresses and terms of service, are as follows:

William Bernard O'Briant, son of Mrs. Virgie O'Briant, Route 2, Roxboro, who enlisted for Field Artillery and will be stationed Fort Bragg, N. C.

Clarence Albert Chambers, son of Mrs. Lily Belle Chambers Reams ave., Roxboro, who joined the Coast Artillery Corps in the Panama Canal Zone.

Arthur Fletcher Perkins, Jr., son of Mrs. Eric G. Perkins, Route 1, Roxboro, who enlisted for Coast Artillery Corps in the Canal Zone.

Sidney Thomas Slaughter, son of Mrs. Ethel Slaughter, Route 2, Roxboro, who followed his brother, Alfred Slaughter, in the Army Air Corps and will be stationed at Fort Bragg, N. C. Alfred Slaughter enlisted through this office on Nov. 18, 1939. The enlistment of Sidney Slaughter makes the fifth son of Mrs. Ethel Slaughter to see service with the U. S. Army.

Edwin Herbert Allen, son of Mr. Johnnie W. Allen, Route 1, Roxboro, who signed up for the Quartermasters Corps at Fort Bragg, N. C.

LAND POSTED SIGNS AT THE TIMES OFFICE



JOSEPHINE DUNN

Josephine Dunn, beautiful stage and screen actress, who will have a leading role in "What A Life", riotous comedy of high school youth, which is to be presented in Memorial Hall at the University Friday evening, January 12, at 8:30 o'clock, under the auspices of the Carolina Playmakers.

### Growers Know Time of Sales

South Boston, Va. — With the sales system now used at South Boston, growers can determine a definite time when their tobacco can be sold. You can also reserve space and it will be held for you. This eliminates much congestion and has proven satisfactory to those selling here. You can depend on the highest market price or better on all grades in South Boston.

### GOOD SWAP

By changing from the old variety of corn he had been growing in the past to a profitable variety, G. W. Davenport of Mitchell county increased his yield from 40 bushels to 101 bushels to the acre.

### FARM FAMILIES MEET HERE WITH LOCAL FSA STAFF

Past Year's Progress Reviewed and Plans For Coming Year Discussed.

Nine farm families who received loans from the Farm Security administration to buy farms in Person county, under the terms of the Bankhead-Jones Farm Tenant Act, met in Roxboro during the past week, to take inventory of their first year's work and to make plans for the new year, according to announcement from County Farm Security Administration supervisor, Joe Y. Blanks, who said that satisfactory progress has been made considering the abnormal season caused by wet weather, etc.

Mr. Blanks pointed out that the experience this year proves the value of the variable payment plan. Under that plan a farmer can make small payments on a farm in lean years and heavier ones in good years. Thus, the borrower does not have to face the possibility of losing his farm because of the adverse conditions which in many cases are beyond his control. "In other words, the FSA is counting not alone on what is produced in any one year but on what the farmer can earn on the average over a period of years," Mr. Blanks said.

The farmers attending the meeting reported that they gained valuable information from one another, in going over their record books and in talking over their farm problems. The wives also swapped ideas about improvements in the home—running water in the kitchen, screened-in porches, year-round gardens, and things to be done to make their new homes more attractive. "It is the purpose of the FSA, in cooperation with the Extension

service and other agricultural agencies, to render as much practical assistance to these families as possible to help them build up their farms and carry out the farming practices best suited to their individual farms," the supervisor said. "Farm improvement is not a one-year job but should continue year after year on the basis of carefully laid plans. Therefore, in addition to our regular visits to the farms during the farming season, these meetings will be held at the close of each year to measure progress and to help the farmers with their plans. Results of this first meeting indicates that our tenant-purchase borrowers have been sold on this idea and already have taken initial steps toward a better balanced farm program."

In addition to those borrowing to buy farms, there are 270 other farmers in this county, both tenants and small farm owners, who are borrowing under FSA's rehabilitation program to buy ferti-

lizer, seed, farm equipment, livestock, and other things needed on the farm. Only those buying farms (and who have made at least one crop) attended the meeting. The tenant-purchase program is a gradually increasing program and has been in operation in this county only one year.

Mr. Blanks stated that J. M. Brewer, T. B. Davis and J. H. Shotwell, the three local farmers composing the County Tenant-Purchase committee, have rendered valuable assistance in carrying out the program, as have also James L. Rabon, Assistant County Supervisor, Mrs. Rose F. Thomas, Home Supervisor, and Lucy Mae Wright, Assistant Home supervisor, his associates in Farm Security work.

The U. S. Department of Agriculture has estimated the 1939 commercial apple crop at 100,284,000 bushels, almost 18,000,000 bushels above the 1938 crop.

### LITTLE CHANGE

Farm real estate taxes have changed little in the past five years, notwithstanding increases in public spending for relief and rehabilitation from the depression of the early 1930's.

### REDUCTION

By following good soil management practices, 50 unit demonstration farmers of Henderson county reduced their soil losses 3,000 tons this past year as compared with 1936.

### INCREASE

Farmers cash income from marketing plus Government payments during November totaled about \$740,000,000, as compared with \$707,000,000 in the same month a year ago.

SELL YOUR TOBACCO IN ROXBORO.

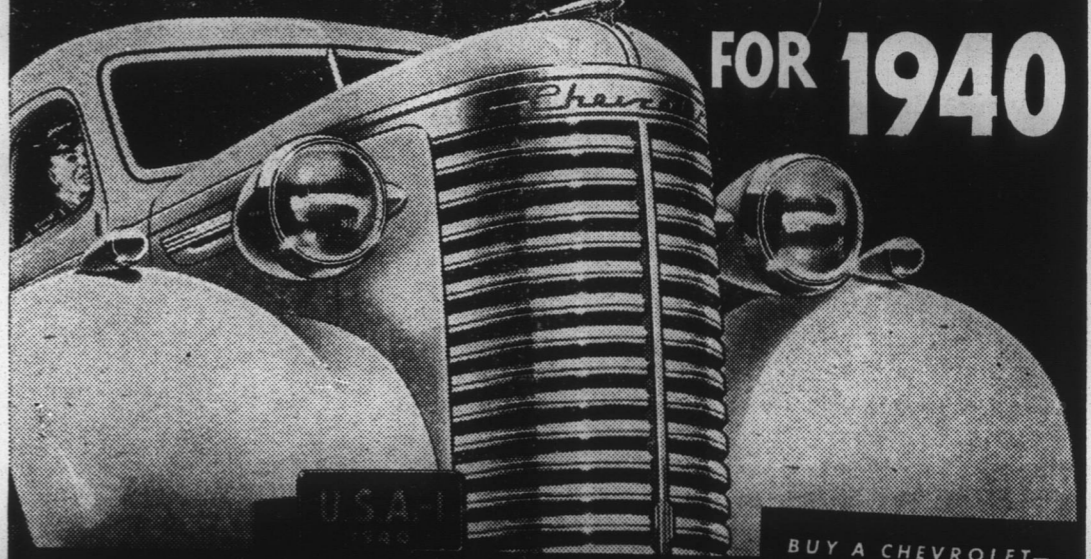
# 1st SALE

## Monday, January 15th Friday, January 19th

We appreciate every pound of tobacco that you have sold with us during the present season and trust that you will favor us with the remainder of your crop. We shall continue to try to get the highest possible average for you.

### Hycow Warehouse, Roxboro, N. C.

## CHEVROLET TRUCKS FOR 1940



Best Haulers... Best Savers and "BEST SELLERS" in the entire truck field!

Chevrolet—world's largest builder of trucks—now offers its new line for 1940—56 models on nine wheelbase lengths, all selling in the lowest price range!

Extra-powerful Valve-in-Head Engines... extra-strong Hypoid Rear Axles... extra-sturdy truck units throughout... make all these new Chevrolets *gluttons for work*, whether you choose a Sedan Delivery or a Heavy Duty Cab-Over-Engine model.

And Chevrolet's famous six-cylinder economy... plus the exceptional dependability and long life of Chevrolet trucks... means that all of them are *misers with your money* when it comes to gas, oil and upkeep.

Choose Chevrolet trucks for 1940 and you choose the nation's greatest truck values... the best haulers, best savers and "best sellers" in the entire truck field!

BUY A CHEVROLET—PROFIT EVERY WAY

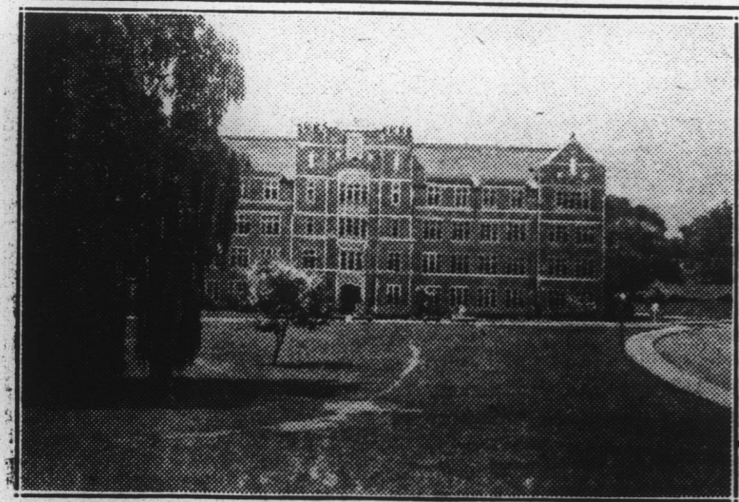
- Only Chevrolet Trucks Bring You All These Famous Features
- New De Luxe Truck Cabs
- Chevrolet's Famous Valve-in-Head Truck Engines
- New Hypoid Rear Axle
- Extra-Sturdy Truck Frame
- New Full-Width Outboard and New Crystal-Clear Safety Plate Glass Windshield
- Perfected Hydraulic Truck Brakes
- Specialized 4-Way Lubrication
- New Sealed Beam Headlights (with separate parking lamps)
- Full-Flange Rear Axle (on Heavy Duty models)
- (Vacuum-Power Brakes, 3-Speed Rear Axle optional on Heavy Duty models of cab-over-engine)

More than ever, the "THRIFT-CARRIERS FOR THE NATION"

See the New 1940 CHEVROLET TRUCKS on special display NATIONAL TRUCK WEEK at your Chevrolet dealer's JAN. 8 to 13

TAR HEEL CHEVROLET COMPANY, Inc.  
Main Street  
Roxboro, N. C.

### AGRICULTURAL EXPERIMENT STATIONS OF SOUTH ARE FRONT LINE OF ATTACK ON FARM PROBLEMS



In the front line of attack on the farm problems of the South are the agricultural experiment stations, maintained by each of the Southern states. A part of the work of these research organizations is portrayed in the film "The New South," now being shown by the distributors of Arcadian Nitrate. On the station grounds results achieved by various ratios of plant food—nitrogen, available phosphoric acid, and potash—are compared in accurate controlled plots. Plant vigor and plant diseases are carefully studied, and breeding experiments in cotton, tobacco and corn varieties are carried on. In their work to keep the land young and to save it from wearing away, the agricultural agencies conduct endless tests, indoors and out, on soil and moisture needs. Chemical and biological laboratory re-

search aims at insect and disease control.

Every facility is provided for maintenance and betterment of fertility, and all of this information is distributed among those who till the land so that it may yield them better returns. It is the hope of those in charge of the Stations that this information service may be greatly expanded until every Southern farmer is reached. All are welcome to call on these institutions for advice and accurate information.

The company making "The New South" traveled to many of the experimental stations. The shots of these in the finished picture demonstrate vividly the improvement made possible in all types of crops by the application of modern scientific knowledge to farming.

## Plant Bed FERTILIZER

See us about your PLANT BED FERTILIZER. We have the analysis that you want.

Start This Year With International

S. B. WINSTEAD  
Winstead Warehouse