

### 1940 Convention Of Rotary Starts At Special Session

After the opening of the 1940 convention of Rotary International at a special session, on Sunday, June 9, which featured a message of welcome and invitation for Dr. Federico Laredo Bru, president of Cuba, and the first general session of the convention on Monday, June 10, the convention met "by vocations" on Tuesday, June 11.

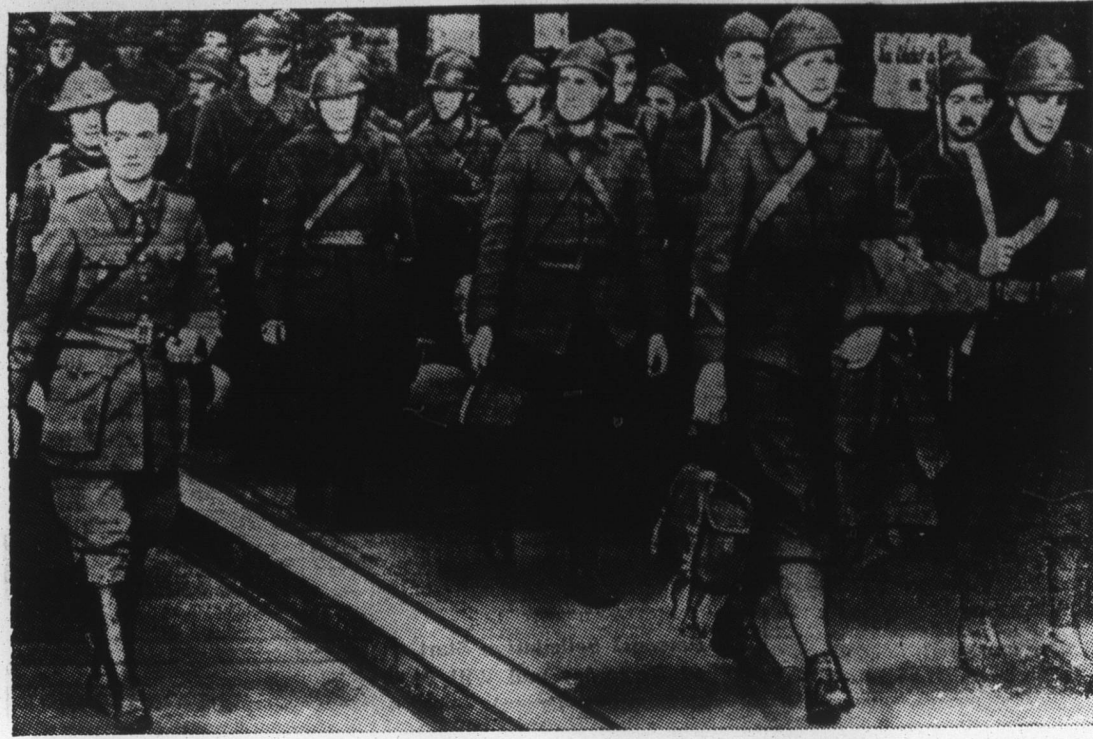
Twenty-eight vocational craft assemblies were held during the morning.

The second general session of the convention, held later Tuesday morning, featured the convention address of G. Ramirez Brown, statesman of Managua, Nicaragua, second vice-president of Rotary International, and the message of Rotary's founder and president emeritus, Paul P. Harris of Chicago.

Rotary Founder Harris, addressing the more than 3,000 assembled Rotarians and guests, said: "Rotary has made itself a miniature model of a world at peace. All great projects must first have their miniature models. This holds good in the project of a world peace. To create a world-wide fellowship out of sixty different elements, each with its numerous religious and political subdivisions, would in the beginning (of Rotary) have seemed like an idle dream, but while Rotary is and has always been idealistic, at least, its idealism has proven to be practical — Rotary has actually become a part of the civic life of sixty nations — I have no hesitation in saying that world peace could be achieved and be made permanent if reared on Rotary's firm foundation of friendliness, tolerance, and usefulness."

Armando de Arruda Pereira, tile and brick manufacturer of Sao Paulo, Brazil, was then unanimously elected president of Rotary International for 1940-41,

### French Poilus in London Escape Flanders 'Hell'



Free from the Nazi trap in Belgium and northern France, these French troops are shown marching from the railroad terminal in London, after a fiery crossing from the European mainland. Transports, convoyed by British naval craft, were bombed incessantly during the voyage.

### Nominated to SEC



President Roosevelt has nominated Sumner T. Pike, Maine Republican, to the Securities and Exchange commission. Mr. Pike is an expert in the oil industry.

and Rufus F. Chapin of Chicago, Illinois, was unanimously re-elected treasurer of Rotary International. Following the elections, an

international Round Table was held, directed by Past R. I. President Allen D. Albert of Paris, Illinois, in which Rotarians of several of the more than two dozen countries represented at the convention took part.

Tuesday evening was devoted to entertainment depicting "A Tropical Night in Cuba", presented at the Tropical Gardens.

On Wednesday, June 12, Rotarian delegates took part in numerous assemblies relating to Rotary club activities and club administration; listened to the annual reports of the president, secretary, treasurer, and the Foundation Trustees of Rotary International; and took action on convention legislation relating to the constitution and by-laws of Rotary International.

On Wednesday evening at the Playa Blanca of the Casino Deportivo, a gala reception and ball were held in honor of President and Mrs. Head and the other officers and their ladies.

Featuring the final session of the 1940 Rotary convention were the election of directors, the address of Past R. I. President Guy Gundaker of Philadelphia, Pennsylvania, the address of Walter B. Pitkin, noted author and lecturer of the various district officers of the 151 districts of Rotary International, and the messages of outgoing President Walter D. Head and incoming President Armando de Arruda Pereira.

Rotarians from outside the United States and Canada who were elected to serve as directors for 1940-41 are: Cesar D. Andrade, Guayaquil, Ecuador, Richard R. Currie, Johannesburg, South Africa, Emile Deckers, Antwerp, Belgium, W. Allan Eley, Singapore, Straits Settlements, Carlos Sanchez Mejorada, Mexico City, Mexico, and T. A. Warren of Wolverhampton, England.

### "My Favorite Wife" Starts Controversy

Considerable controversy may be precipitated when "My Favorite Wife" makes its local screen debut.

"My Favorite Wife" features a streamlined twist to the Enoch Arden story, with a wife returning after a seven-year absence to find that she has been declared legally dead, and that her husband has just remarried.

Irene Dunne portrays the missing wife, Gail Patrick is the "other bride" and Cary Grant, co-starred with Miss Dunne, is the husband.

Ann Shoemaker, who depicts Grant's mother, opined on the RKO Radio set that the second wife gets a pretty tough deal.

"After all, she marries Grant in good faith and certainly has some right in the matter."

Miss Dunne and Miss Patrick agreed, and said they feel sorry for the bride.

"That's all very well," Director Garson Kanin spoke up, "but how about the first wife? She certainly has some rights in the matter also."

### In British Purge



Portrait of Capt. Archibald Ramsay, conservative member of Parliament, who was arrested by the British government, with many others, in a sweeping roundup of suspected enemy agents.

Then the argument was on, an argument which probably will be repeated countless times when "My Favorite Wife" comes to the Palace theatre Monday and Tuesday.

### Finance Homes Institutions Help Finance Homes

Washington, D. C., June 12 —

Indications of the increasing interstate flow of home mortgage funds are shown in an analysis of the distribution of local and out-of-state lending under the "HA" insured mortgage system last year, Federal Housing administrator Stewart McDonald announced today.

Home mortgages covering out-of-state properties for insurance by the FHA in 1939 from local institutions amounted to \$97,820,558, or 13.2 percent of the gross amount of \$741,064,764 of all mortgages accepted, Mr. McDonald said. This compares with \$59,254,021, or 9.1 percent of the amount of \$650,160,101 accepted in 1938.

The fact that the amount of out-of-state lending last year was substantially larger than in 1938 lending institutions are benefit-

ing increasingly from this free flow of mortgage funds across state lines, Mr. McDonald said, a condition made possible by establishment of nationally recognized mortgage standards under the National Housing Act.

Also, he pointed out that there were six states last year with local institutions advancing more than 30 percent of their insured mortgage funds on out-of-state properties, against four in 1938, and ten states with more than 30 percent of local insured mortgages originated by out-of-state institutions, against four in 1938.

Wide variation marked the outflow and inflow of insured mortgage funds last year for the individual states. Among the states with institutions advancing a large proportion of their insured funds on out-of-state properties last year were Vermont with 78.7 percent of the amount of all insured mortgages originated by its local institutions covering out-of-state properties; Minnesota with 78 percent, District of Columbia 71.9, Delaware 66.5, New Jersey 39.6 and Kentucky 34.8.

Among the states with comparatively large volumes of insured financing of local properties by out-of-state institutions were Idaho with 57.7 percent of the amount of accepted mortgages covering local properties and financed by out-of-state institutions last year, North Carolina with 42.4 percent, District of Columbia 36.3, Delaware 36, Iowa 35.7, New Mexico 33.7, Georgia 33.2, Virginia 32.3, Texas 31.3, Montana 30.8.

Institutions in Arizona, Florida, Maine, Nevada and Rhode Island financed no mortgages under the FHA program on out of state properties last year.

### CLOVER

A large number of Watauga

county demonstration farmers are making plans to save part of their clover crop for seed, reports H. M. Hamilton, farm agent of the State College Extension service.

### ELECTRICITY


With electricity available to rural Anson county homes labor-saving devices for the farm and home are being installed daily, reports Assistant Farm Agent Clarence Earley.

### ORGANIZING

A grower-shipper association is being formed by Columbus county farmers in the Fair Bluff section to handle the sweet potato crop, reports Farm Agent Sam C. Oliver.

"When troubles come they come not in single spies but in battalions."

ADVERTISE IN THE TIMES FOR RESULTS.



Engraved

Wedding Announcements  
Invitations  
Calling Cards  
Stationery

PERSON COUNTY TIMES

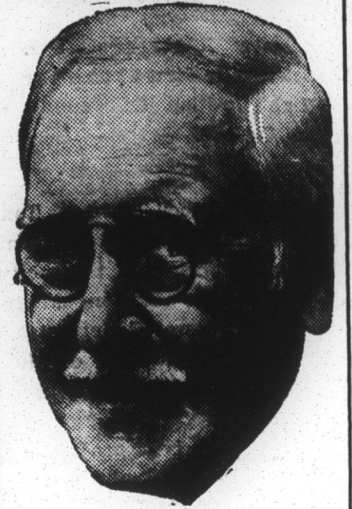
### WANT ADS

CASH PAID FOR CEDAR Timber, either on the stump or in logs or lumber—Geo. C. Brown and Co. of N. C., 1730 W. Lee, Greensboro, N. C., Phone 4118. 9-21-tf-ts

FRYERS FOR SALE — Two pounds and over 25c per pound. Near S. P. Gentry's Store, Highway U. S. 501.

Arthur Wrenn  
ltp

LAND POSTED SIGNS AT THE TIMES OFFICE



Don't Forget DAD Sunday, Its Father's Day

### Suggestions

- COOL SHIRTS
- COOL PAJAMAS
- COOL HATS
- SPORT BELTS
- SPORT SHIRTS


SPECIAL FOR FATHER'S DAY GIFTS  
50c SHORTS  
3 for \$1.00

\$1.65 PAJAMAS \$1.29

**LONG'S**  
HABERDASHERY

Tomorrow's Styles Today.  
Roxboro, N. C.

One Thing That Dad Will Like



A good Sunday dinner made up of his favorite dishes.

GET HIM A BIG, TENDER

## JUICY STEAK

with mushrooms, potatoes, beans, carrots, etc. Treat dad to a meal that he will long remember. We have what he wants.

## Carl Winstead

## Sunday is Dad's Day



REMEMBER DAD FATHER'S DAY JUNE 16

If you should ask dad he would say — Give me a

## STRAW HAT

Sailors and Panamas


**\$1.00 - \$2.95**

Guaranteed Fast Color **\$1.00**

New Sport **50c**

Cool Tropicals **\$12.95**

**FOUSHEE CLOTHING STORE**



## SHELL

Change To SHELL  
STOP AT YOUR SHELL STATION FOR ECONOMICAL SERVICE  
Humphries Oil Co

TELL 'EM SEND TWO CASES



# Nightmare . . .

Don't Let Your Nightmare Become a Reality

# Insure . . .

Your Tobacco Crop Against Hail & Wind NOW

## Thompson Insurance Agency

E. G. Thompson - W. G. James - W. Reade Jones - Maurice "Pony" Allen - Ivey Featherston - O. H. Winstead, Semora - E. E. Ellis, Rougemont - W. Irving O' Briant, Timberlake.