

IF IT IS NEWS ABOUT
PERSON COUNTY, YOU'LL
FIND IT IN THE TIMES.

Person County Times

THE TIMES IS PERSON'S
PREMIER NEWSPAPER,
A LEADER AT ALL TIMES.

VOLUME XI PUBLISHED EVERY SUNDAY & THURSDAY

THURSDAY, JUNE 27, 1940

NUMBER THIRTY-SIX

Griffin Explains School System

Young Tar Heels Would Take Compulsory Course

More Than 2,000 CCC Jobs Allotted To State Under New Program.

Washington, June 25 —North Carolina has been allotted 2,405 out of a nation-wide 100,000 positions in the new Civilian Conservation Corps program to begin July 1, CCC Director James JMcEntee reported today.

These new men will be enrolled as replacements for men who have left the Corps to accept employment or who will leave prior to June 30 as their enlistments expire.

At least 90 percent of the North Carolinians who will be enrolled—or about 2,164—are expected to

be juniors between the ages of 17 and 23.

These also are the men who will have the first taste of the new national policy of giving non-combatant training relating to military science and tactics to members of the CCC.

"Young men entering the CCC in July will have excellent opportunities for training in auto mechanics, truck and tractor driving, automobile operation, maintenance and repair, the handling of power machinery, bridge building, the contribution of trails and minor roads, the laying of telephone lines, erosion control, first aid and many other types of work and skills," Mc-

Entee said.

"This training will be given while the men are at work in fields, in repair shops and in the educational and training buildings maintained at each camp to give enrollees education in academic subjects and training in vocational work."

The North Carolina CCC directors of selection and their assistants now are at work examining applicants for enrollment in the corps. Those selected, said McEntee, will be enrolled by July 1 after War Department physical examinations are completed and men outfitted.

LARD

The outlook for lard appears to have some hopeful spots because of the large buying program planned by the Federal Surplus Commodities corporation.

Coastal Defense Is Strengthened Along Atlantic

Washington — The United States defense policy in the Atlantic and Caribbean aims at eventual but complete independence of the British fleet.

At present plans do not call for the massing of a large fleet in Atlantic waters. The bulk of new fighting ships, building and planning, probably will be based in the Pacific in keeping with traditional naval policy.

Despite desires of naval strategists and considerable affirmative sentiment in Congress, the day of the full-fledged "two-ocean navy" is still far off, barring, of course, unforeseen developments.

Second only to the first line of resistance which the fleet would offer in the Atlantic, is the defense base construction by the army and navy along the Atlantic coastline and in Puerto Rico and the Canal Zone itself.

Preliminary work on a powerful Army air base at Chicopee, Mass., has begun. At Quenset, R. I., the Navy has been authorized to purchase \$1,000,000 worth of land for another air station.

Naval shore establishments, bases and stations already exist at various points along the New England coast, including Portsmouth, N. H., Boston, Newport, R. I., and the large submarine base at New London, Conn.

From New York City south to Pensacola, Fla., various naval establishments dot the east coast. At Norfolk, the navy has authorization to buy an additional \$501,000 of land.

On the Florida peninsula, an ambitious naval undertaking, involving new expenditures of \$22,850,000, is being launched. Of the total sum, \$17,000,000 has been allocated for construction of a giant air station at Jacksonville, while the remainder, \$5,850,000, is authorized for improvements at Pensacola.

In Puerto Rico there is a vital beehive of activity as an estimated \$1,000,000,000 is being spent to convert the island possession into a Caribbean "Gibraltar" commanding the Atlantic approach to the Panama Canal.

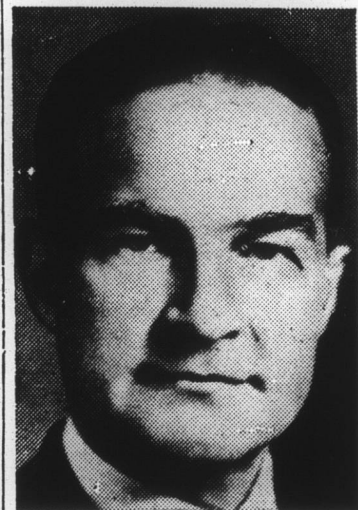
To coordinate the army's part in the huge job, Puerto Rico has been designated as a separate army department. Transfer of troops to the new department has been going on steadily for some time as barracks, fortifications and air fields come into existence.

At the Panama Canal, the narrow transcontinental U. S. land strip on either side of the waterway is bristling with new anti-aircraft guns and batteries, with more to come. As in Puerto Rico, the land forces are being augmented.

Elaborate anti-espionage and anti-sabotage measures have been evolved and paper plans have

State Pays For Operation For Eight School Months

Steel Chairman



Irving S. Olds, elected chairman of the board of the U. S. Steel corporation, to succeed Edward R. Stetlinus Jr., who resigned to serve with national defense commission.

been drafted to construct "bypass" locks which would be used to transit ships in the event the regular locks were destroyed by enemies.

Another point of defense in the Caribbean scheme is the navy's base at Guantanamo, Cuba, which provides a northern listening post.

AMERICANS IN BRITAIN APPEAL FOR EARLY AID

Washington — Senator McNary, Republican, Oregon, received an appeal this week from more than 100 Americans residing in Great Britain urging that the United States give the allies "planes and more planes, guns and more guns, and if necessary, what is harder still, our men."

The list of signers, which included the name of Mrs. Peter Arno, urged help for the Red Cross and similar relief organizations operating abroad and suggested that "we Americans should also throw open our shores to the old and young of all the countries stricken by aggression for the duration of the war."

Person county is a part of North Carolina's State School system. Under this system, which has gained nation-wide recognition, the state pays for the operation of the schools for eight months in all counties and for both the white and colored. The funds provided from Raleigh and which come from tax sources other than ad valorem pay all personnel salaries of superintendents, office, teachers, mechanics, truck drivers and janitors. Transportation costs are also paid from state funds.

The county's tax money is used for the erection of new buildings and the upkeep of the old ones. Insurance on the school building is also a county obligation and a rather large one for each year. When additional busses are added to the county's total this is from county funds. As busses wear out these are replaced by the state. The largest item of Person County's expense for schools is school bond principal and interest, which amounts to about \$30,000 annually. The total appropriate cost of schools for 1939-1940 is \$254,000 of which \$169,000 are state funds, and \$58,000 are county funds.

The curriculum is fixed and set up in a State Course of Study. Variations are permitted in the counties and cities as conditions vary. Usually the larger schools can give a broader selection of subjects. The Schools of Person county teach the usual academic subjects plus a liberal number of vocational subjects such as Home Economics, Industrial Arts, Agriculture, Business Training, and Public School Music. This number does not include several teachers of piano. There is still, however, a much greater demand for vocational subjects and teachers than we have.

Forty-two busses are operated in the county. Thirty-five for the white and seven for the colored. Transportation for the negro schools is confined to the high school students. A large number of one and two-teacher negro schools should be consolidated in the interest of better teaching. The original cost of this would be heavy on the county but more economical over a period of years.

Four years ago the state began to furnish free textbooks to all children in the elementary grades. Two years ago a rental plan for high school students was provided. High school students may now rent all books for the year for about \$2.20. Supplementary readers may be rented in the elementary grades for a nominal sum. Person county uses all these methods of handling books and generally this system is very satisfactory. This requires a county bookroom as there are slightly over forty thousand books to be accounted for each year.

The total enrollment for the county is 7,370. Of this number 4,240 are white and 3,060 are negroes with 70 Indians. There are 123 teachers in the white schools and 79 in the negro schools, with three in the Indian school or a total of 205 teachers and principals.

ADVERTISE IN THE TIMES OFFICE

Roxboro and Person County

Greet All Their Guests During "HOSPITALITY WEEK" With Broad Smiles Of Welcome

This institution joins in with all others and bids you to have a big time while in "The Courteous City". Everything has been prepared for your enjoyment and we all hope you enjoy the occasion to the fullest extent.

COME BACK AGAIN

PEOPLES BANK

MEMBER

We welcome the good people in the surrounding community to Person County and Roxboro. We are proud of our town and county and know you will enjoy your visit here. Come again real soon, you are always welcome.

J. C. WHITT

LAUNDRY AND DRY CLEANING