

County Progress Again To Be Exhibited At Fair

Only about six weeks remain before the 1940 N. C. State Fair opens in Raleigh on October 8, and counties are being urged to begin preparation of their progress exhibits which again will be one of the features of the fair.

F. H. Jeter, agricultural editor of N. C. State College, is chairman of this department of the fair, and he announces that premiums totaling \$2,000 are being offered for the 10 best county progress exhibits. The first prize is \$650, the second prize \$500, third prize \$300, fourth \$200, fifth \$100, and sixth through tenth prizes \$50 each.

Dare and Alamance Counties already have signified their intention of entering exhibits. Caldwell County had the best exhibit last year.

Jeter said that, as in the past, county farm and home agents will take the lead in arranging the exhibits. However, he said it is desired that vocational teachers, school superintendents and principals, boards of trade and chambers of commerce, manufacturers, civic clubs and women's organizations have a part in planning and preparing the exhibits displayed.

The exhibit should be prepared to cover 30 running feet of space. It will be judged, 35 percent on the attractiveness of the exhibit, 30 percent on the balance of the display, 20 percent on how representative it is of the county, and 15 percent on the quality of the materials.

"These exhibits are being encouraged that the great resources of North Carolina—agricultural, industrial and educational—may be brought to the forefront in a fitting and comprehensive manner," Jeter said. "The premium money is divided so that exhibitors are assured down to tenth place of a prize which will in part help to defray the expense of bringing the exhibit to the Fair."

Gardening Year-Round Project

No longer is gardening considered exclusively a summer enterprise. H. R. Niswonger, horticulturist of the N. C. College Extension Service, points out that it is possible to have fresh vegetables from the home garden on a year-round basis in North Carolina.

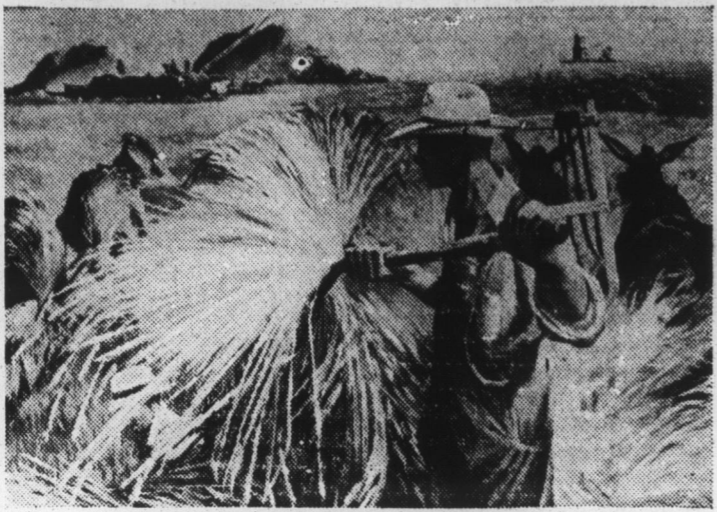
"During September and October, there are many vegetables which may be planted," Niswonger says. "These include winter spinach of the Longstanding and Bloomsdale varieties, Siberian kale, Southern Giant Curled mustard, Purple Top Globe turnip greens."

"Beets and carrots planted the first of September in Eastern Carolina should mature before freezing weather. Cabbage plants of the Charleston Wakefield variety usually will produce heads about Christmas time in the East if planted around September 1. This variety of cabbage will stand a lot of cold weather."

The horticulturist also recommends green onions as a winter delicacy from the home garden. "Put out sets of the Silver Skin variety, and for green onions for next winter and spring set out the multiplying variety. After thinning out plants to be used for green onions, the remaining plants will develop into mature onions," he says.

Niswonger recommends that strawberry plants be fertilized in Eastern North Carolina in early September and in the mountain and northern Piedmont area during late September or early October. "For all regions, apply eight to ten pounds of a 5-8-6 fertilizer per 100 feet of row. Put one-third of the fertilizer on each side of the row and the other third on top. Develop a thin matted row of plants with the plant bed 18 inches wide and the runner plants spaced a

New 'Loan' Policy for American Art



Illustrating a new lending policy which will make its collection of oil paintings available to other institutions in the United States, the Metropolitan Museum of Art in New York city will begin taking applications for loans on September 1. Typical of the modern American collection is the painting by Joe Jones entitled "Threshing," reproduced above.

Kept Busy



Colonel Edgar H. Bain (above) of Goldsboro, is a busy man these days. He is commander of Goldsboro's American Legion post, commanding officer of the 321st infantry of the 81st division, treasurer of the N. C. Legion News, and state director of the Brewers and North Carolina Beer Distributors committee. In the latter office, he supervises the beer industry's "clean up or close up" campaign in North Carolina which has resulted in the elimination of many undesirable beer outlets.

hoe-width apart. After the 12-inch row is filled with the spaced plants, remove all surplus runner plants around October 1 to 15," the Extension specialist said.

Next Biennium To See State's Rolls Greatly Boosted

Raleigh, Aug. 28 — Approximately 4,000 to 5,000 needy aged will be added to the old-age assistance rolls during the next two years, the State Board of Charities and Public Welfare decided today.

One thousand additional families will be given aid for dependent children in the coming biennium.

The board also agreed to increase the size of the average grant for dependent children from \$17 to \$20 a family in order to bring North Carolina nearer the national average of \$32 a family.

An effort will also be made to increase the size of the grants for old-age assistance. The contemplated increase in the rolls of aged needy will raise the number from 35,720 to approximately 40,000 two years from now.

The board was given a ruling by Attorney General Harry McMullan that held a bond need not be posted for refugee children from abroad. The Attorney General pointed out that a trust fund has been set up by the U. S. Committee for the Care of European Children to prevent refugee youngsters from becoming public charges.

The committee requires persons desiring to care for refugee children to furnish \$50 for each child to be placed in the trust fund, McMullan said. Transportation charges of \$75 and a visa fee of \$13 will make it necessary for any North Carolina person wishing to provide for a refugee to send a total of \$138 to the committee.

About 200 farm buildings in the United States and Canada burn every day — nearly 75,000 buildings a year.

Negroes Attend Short Course At A. & T. College

Eleven Negro 4-H club members representing twelve clubs throughout the county, left Roxboro Monday morning to attend the annual 4-H club short course at A. and T. college, Greensboro, it was learned today from C. J. Ford, Negro farm agent.

Pauline Tuck, 4-H club leader from Lee Jeffers community, chaperoned the four girls from Roxboro and Lee Jeffers communities. The following club members have been assigned to special groups during the short course as follows: Recreational leadership, Mary Lawson; Song leadership, Frances Johnson; Farm Shop course, Bryce Clay; Panel discussion, Acres Clay.

These individuals will do special work in these departments and bring such information back to their local clubs. The group will return to Roxboro Saturday morning.

The judging team which will compete with 32 other teams from 32 counties, is composed of the following members: Acres Clay, Bryce Clay, Albert Lee and Burnice L. Baird and alternate.

FSA Committee Has New Member

(Continued From Front Page) and at conservation of the soil and water resources.

"The tenant purchase program is real democracy at work," said Mr. Blanks, County Supervisor. "At a time when property rights and human rights are being destroyed in other parts of the world, America is going ahead with a program for creating more property owners and giving more people a real stake in society. This program means restoring rural purchasing power and stabilizing our rural economy. Farmers who own farms are taxpayers. Farmers without farms are tax burdens."

Any farm tenants or farm workers who are anxious to become owners should apply at the FSA office in the basement of the Post Office, Roxboro.

The old fashioned woman who "paid and paid", now has a daughter who says "charge it!"

Seventy-eight fatal highway accidents in the state the first half of this year occurred on Sundays.

BUSINESS PRINTING

Consult with us about you letterheads — we'll make them speak the language of your business.

Phone 4501

Person County Times

CARRYOVER

This year's cotton carryover or cotton on hand at the end of the 1939-40 marketing season, which ended July 31, amounted to 10,595,720 bales, reports the U. S. Census Bureau.

PEACHES

The U. S. Surplus Marketing administration, has been authorized to purchase up to 5,000 tons of dried peaches for distribution to needy families of the country.

SPREAD

Under present plans of the U. S. Department of Agriculture, the food stamp plan will be extended to a total of 175 to 200 cities or to the members of 5,000,000 relief families by the end of the fiscal year.

CALVES

Baby beef calves being cared for by 4-H Club members of Anson County as a part of project work are growing and fattening rapidly, says Clarence Early, assistant farm agent.

Four bicyclists were killed in North Carolina from January to July, 1940.

Twenty-one persons were killed in 12 auto-train accidents in this state for the first six months of this year.

Private initiative and enterprise made this country what it is today.

There are 101 recognized substances in milk, but no chemist has ever succeeded in putting them together and getting milk.

Ever-Normal Granary Facts: Wheat

If all the 1940 crop plus the supply in the were used for food, it would provide every and in the with TWICE as much and other wheat foods as each ate in the entire year of 1939.

ADVERTISE IN THE TIMES FOR RESULTS.

After All's Said And Done . . .

YOU ADVERTISE FOR ONE REASON

TO SELL MORE MERCHANDISE

For More Sales Per Dollar Spent Advertise In The **TIMES**.

PHONE 4501

TIMES