

### Progress Under National Farm Program Being Felt

Raleigh, September 12.—The story of agriculture in North Carolina during the past seven years under the National Farm Program is a story of more income, more conservation, and more security, says Dr. I. O. Schaub, director of the State College Extension Service. "What's more important," he declared, "is that it has been a democratic program, with the farmers helping to run things."

Here are some of the facts and figures Dr. Schaub cited in reporting on the progress: The cash income of North Carolina farmers was 148 per cent higher in 1939 than in 1932; buying power increased 231 percent from 1932; farm real estate values in 1940 are 6 per cent above those of 1933; 2,013 acres of 1940 wheat was protected by crop insurance; the Farm Credit Administration agencies loaned \$78,366,676 from 1933 to 1939; debts of low-income farmers were reduced \$970,707 under Farm Security Administration debt adjustment service; and 31,102,000 pounds of surplus foodstuffs were distributed to needy families in the last fiscal year.

Under conservation, 228,400 North Carolina farmers participated in the 1933 AAA program, representing about 67 per cent of the State's cropland. Participation is even higher in 1940. In 1939 a total of 969,113 acres of North Carolina farm land was covered by 5-year agreements with the Soil Conservation Service. During 1939 a total of 1,175,800 trees were planted with Federal assistance.

Farmers are also more secure in their homes. From 1935 to 1940 15,824 farm families received rural rehabilitation loans totaling more than \$7,670,000, and \$461,730 in grants were made during the same period. Four hundred and nineteen tenant families started toward ownership by loans for farm purchases, and 4,912 miles of rural electric lines to serve 20,878 farm families was made possible by allotments of the Rural Electrification Administration.

"All of this was in North Carolina, and such progress will continue," Dr. Schaub asserted.

### F S A FAMILIES DOING GOOD JOB OVER CAROLINA

Rehabilitation Borrowers Are Repaying Their Debts In Satisfactory Manner.

North Carolina farm families on the Farm Security Administration program are tugging hard at the bootstraps of opportunity, and slowly lifting themselves out of debt and up to self-supporting status.

One hundred and eighty-six low income farm families increased their net worth by 27 per cent and reduced their debts owed to all others outside FSA by 15 per cent during 1939.

This program was shown by an analysis of 186 record books which each of the 15,000 families on the FSA rehabilitation program must keep, according to Joe Y. Blanks, FSA supervisor for Person county. While this is a small sample, Mr. Blanks said it was considered a fair indication of what all families are doing.

FSA loans for the purchase of tools, seed, fertilizer, livestock and workstock, and for farm improvements. Each family follows a planned operation of farm and home, worked out between the family and the FSA farm and home management supervisors. Dual purpose of this plan is subsistence for the family and conservation of soil and water resources.

FSA announced recently that rehabilitation borrowers were repaying their debts to Farm Security Administration satisfactorily, having repaid about 83 per cent of maturities, and its survey indicates they are making defin-

### FARM QUESTIONS ANSWERED

Question: When should I apply ground agricultural limestone to my land?

Answer: The best time to apply lime is from three months to one year before seeding legumes. If lime is spread on this far ahead, it will have sufficient time to contact acid in the soil particles and counteract it. The application of lime to cultivated land should be made after plowing, and the material should be mixed with the topsoil. Little benefit may be expected if the limestone is plowed under before being mixed properly with the topsoil. On pastures it is necessary only to scatter the lime on top of the sod.

However, better results will be secured if it is worked in with a light harrowing.

Question: When should cotton be picked?

Answer: To avoid losses in grade and staple, pick cotton promptly and frequently, but not while green or wet. Store the seed cotton in a dry place and stir it frequently to prevent heating. At the gin, demand slow and careful ginning to assure smooth preparation. To maintain purity of variety, dump the rolls, clean the gin, and catch the planting seed at the breast. The planting seed should be stored in a dry building.

Question: Does it pay to fertilize winter cover crops?

Answer: Fertilization of cover crops pays by increasing the feeding value, and by increasing the fertility value of the cover crop. Experience has shown that by using fertilizer under winter legumes and plowing the legume crop under in the spring, using no fertilizer on the following crop, good yields have been secured. In fact, the yields were greater than where no fertilizer was applied to the cover crop but an equal amount of the same analysis fertilizer applied after the unfertilized legume was plowed under.

ite progress in reducing their total debt burden.

ADVERTISE IN TIMES FOR RESULTS.

Palace Theatre Monday - Tuesday, Sept. 16-17

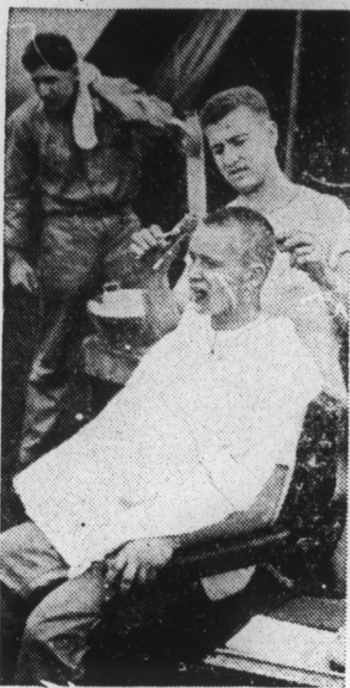
A GREAT NOVEL! A GREAT PLAY! And now... a laugh-packed screen hit with the stars of "Mr. Chips" & "Rebecca!"



LOVE LAUGHS AT PRIDE and PREJUDICE starring Greer GARSON Laurence OLIVIER with MARY BOLAND EDNA MAY OLIVER MAUREEN O'SULLIVAN ANN RUTHERFORD FRIEDA INESCORT Directed by ROBERT Z. LEONARD Produced by HUNT STROMBERG

No Morning Shows; Afternoons Daily 3:15-3:45; Admission 10-30c. Evenings Daily 7:15-9:00 Admission 15-35c.

### 'Blitzkrieg Bob'



Private William Hanyak of the Eleventh Infantry, takes time out from the "Battle of the St. Lawrence Valley," at Ogdensburg, N. Y., to have his crowning glory pruned. Hanyak hails from Philadelphia.

### Legal Notice

#### ORDER AUTHORIZING \$28,000 SCHOOL BUILDING BONDS

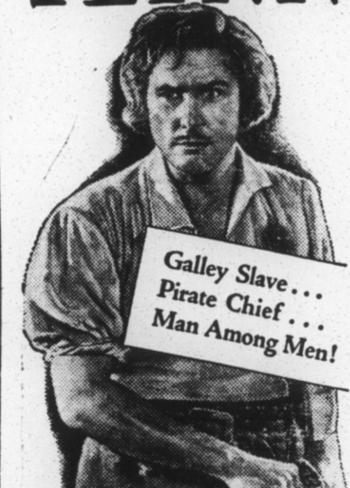
WHEREAS, the County Board of Education of Person County has certified to this Board a resolution passed by said County Board of Education on August 19, 1940, showing that it is necessary in order to maintain the constitutional six months' school term in Person county to provide certain school improvements described in said resolution; and

WHEREAS, the County Board of Education has requested this Board to order the issuance of a sufficient amount of County bonds in order to secure the necessary funds for providing such school

ADVERTISE IN THE TIMES FOR RESULTS.

DOLLY MADISON THEATRE Monday - Tuesday, Sept. 16-17

### ERROL FLYNN



Galley Slave... Pirate Chief... Man Among Men! 'The Sea Hawk' with Brenda MARSHALL Claude RAINS Donald CRISP - Flora ROISSON - Alan HALE

Directed by MICHAEL CURTIZ A WARNER BROS. First National Picture Screen Play by Robert Lach and Helen L. Miller - Music by Erich Wolfgang Korngold

Special Morning Show Monday 10:00; Afternoons Daily 3:15-3:45; Admission 10-30c. Evenings daily 7:15-9:00 Admission 15-35c. (Please note owing to the length of this picture the morning matinee will be 10:00 o'clock instead of 10:30 with box office opening 9:45.)

improvements; and

WHEREAS, the Board of Commissioners has carefully examined the facts and has determined and hereby finds as a fact that such statements of said resolution are true and that it has become the duty of said Board of Commissioners, acting as an administrative agent of the State in providing a state system of public schools, to order the issuance of a sufficient amount of County bonds to provide all of such school improvements in order to maintain the constitutional six months' school term; now, therefore,

BE IT ORDERED AND RESOLVED BY the Board of Commissioners for the County of Person:

1. That bonds of Person County be issued pursuant to The County Finance Act, as amended, in an amount not exceeding \$28,000 for the purpose of providing funds for constructing the school improvements referred to in the first preamble of this bond order in order to maintain the constitutional six months' school term, such improvements consisting of the following:

Installing sanitary facilities for the Bethel Hill High School, Hurdell Mills school and Mt. Tirzah

school.

Altering and repairing the Bethel Hill High School Building to conform to the requirements of the State Fire Marshal and the State School Commission.

2. That a tax sufficient to pay the principal and interest of said bonds when due shall be annually levied and collected.

3. That a statement of the County debt has been filed with the clerk and is open to public inspection.

4. That this order shall take effect thirty days after the first publication thereof after final passage, unless in the meantime a petition for its submission to the voters is filed under said Act, and that in such event it shall take effect when approved by the voters of the County at an election as provided in said Act.

The foregoing order was finally passed on the 3rd day of September, 1940, and was first published on the 5th day of September, 1940. Any action or proceeding questioning the validity of said order must be commenced within thirty days after its first publication.

W. T. Kirby, Clerk. 9-5-2t

North Carolina Person County

In the Superior Court E. N. Collier vs. John C. Woody etals Notice of Civil Action

The defendant, John C. Woody, will take notice that an action as above entitled has been instituted in the Superior Court of Person County by the plaintiff against the defendant for the purpose of having a first lien satisfied out of certain money paid to the office of the Clerk of Superior Court and in which money the defendant has an interest and he will further take notice that he is required to appear in the office of the undersigned Clerk of Superior Court of Person County at the Courthouse in Roxboro, North Carolina on or before the 20th day of September, 1940, or within thirty days thereafter and answer or demur to the complaint of the plaintiff which was filed in the office of said court on the 22nd day of July, 1940, or judgment as demanded therein will be rendered against him.

This 19th day of August, 1940. Sue C. Bradsher, Clerk Superior Court. 8-22-4t - t

666 checks MALARIA in 7 days and relieves COLDS symptoms first day. Try -Rub-Mv-Tim--a Wonderful Liniment

We sell Eye Glasses to Satisfy the eyes — \$2.00 to \$8.00 THE NEWELLS Jewelers Roxboro, N. C.

WE BUILD FOR Roxboro and Person County With All Work Guaranteed. No Job Too Large and None Too Small. GEORGE W. KANE Roxboro, N. C.

THE HEART OF AMERICA On the March

THROUGHOUT the length and breadth of this vast land, a great army of millions of American boys and girls is on the march again—back to school. Their education, their training for citizenship, is the core of American civilization. For they are the future America.

The railroads have no authority in school matters, but they make a tremendous — though little known — contribution to public education. For example, in 1939 they paid more than one hundred million dollars in school taxes—taxes that paid for the schooling of 1,300,000 American children. (In many communities these railroad taxes are the chief support of local schools.)

The Norfolk and Western Railway is proud to have a part in the education of the thousands of boys and girls—your children—who live along its lines. Last year, this railroad paid approximately \$1,000,000 in county school taxes alone in two of the six states it serves. And this represented more than 50 per cent of the railroad's tax bill in those counties.

The amount of school taxes the railroads pay depends upon the amount of business they handle. When the railroads lose business to their competitors—competitors who pay little or nothing toward the support of schools—their taxes decrease. That means a cut in your school budget, or an increase in your taxes. So, when you get ready to ship freight or take a trip, it's good sense on your part to patronize this big taxpaying citizen of your community.

Guard the lives of our school children. Make this the banner safety school year

Norfolk and Western Railway